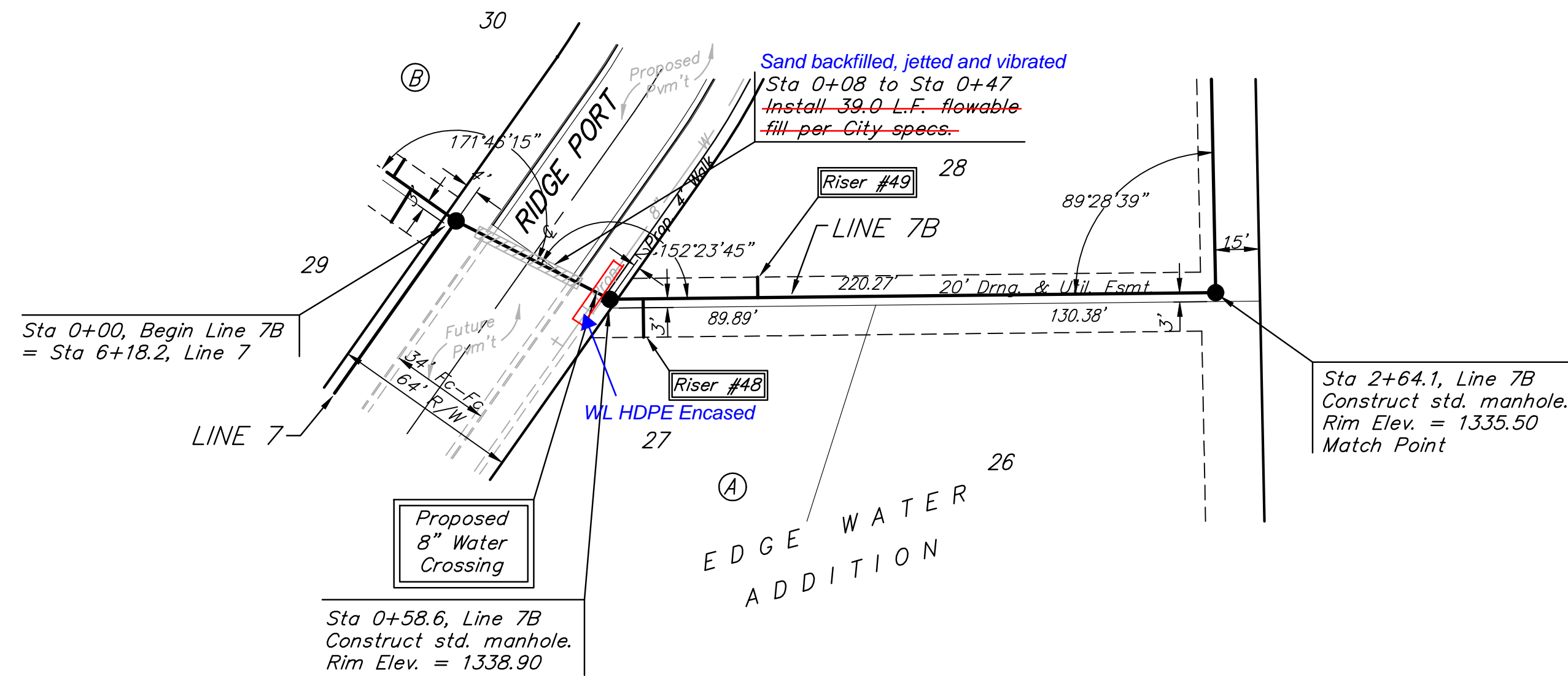


BENCHMARK:
 BM #1: HOOVER AND 45TH ST. NORTH
 - COW BENCHMARK AT NE CORNER OF INTERSECTION, 10.20' SSE OF PP, 58.80' ESE OF PP ON NW CORNER, 85.50' NE OF GAS LINE MARKER, 59.00' NORTH OF GAS LINE MARKER, 28.50' EAST OF CENTERLINE, 14.50' NORTH OF CENTERLINE.
 ELEV. = 1335.29 (NGVD 29)

BM #2: Small RR spike in 3rd PP west of Hoover St. on the north side of 45th St. N.
 Elev. = 1337.68

BM #3: Small RR spike in 2nd PP east of NW Corner of SEC. 27, TWP. 26-S, R-1-W. (North side of 45th St. N., west of Hoover St.)
 Elev. = 1339.57

BM #4: 60d nail in PP at the SE corner of exception on west side of Hoover St., south of 45th St. N.
 Elev. = 1335.26



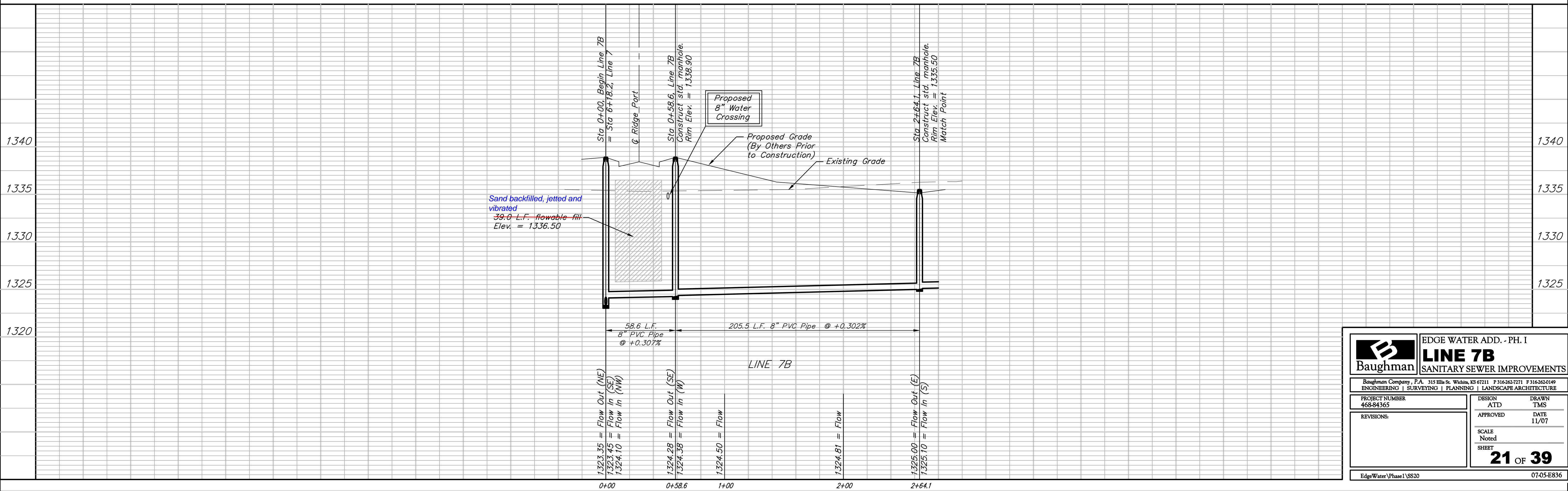
Scale: 1" = 40' Horizontal
 1" = 5' Vertical
 • = Iron

RISER NO.	DISTANCE FROM MAIN TO RISER (L/R)	DISTANCE FROM	
		UPSTREAM MH	DOWNSTREAM MH
48	12.6' Rt.	190.1'	16.5'
49	6.6' Lt.	156.1'	50.5'

SEWER SERVICE TABLE

NUMBER	TYPE	LOCATION				FOR INFORMATION ONLY	
		LOT NO.	BLOCK NO.	LINE NO.	STATION DIRECTION	APPROXIMATE LENGTH 4" PIPE	
						VERTICAL	HORIZONTAL
48	8" X 4" Tee	27	A	7B	0+70/Rt.	10.0'	13.0'
49	8" X 4" Tee	28	A	7B	1+09/Lt.	8.5'	7.0'

NOTE: Vertical Riser Pipe shall be extended to 2' minimum above ground water elevation and 4' maximum below proposed ground elevation.



Baughman ENGINEERING | SURVEYING | PLANNING | LANDSCAPE ARCHITECTURE

EDGE WATER ADD. - PH. I
LINE 7B
 SANITARY SEWER IMPROVEMENTS

PROJECT NUMBER 468-84365	DESIGN ATD	DRAWN TMS
REVISIONS:	APPROVED	DATE 11/07
SCALE Noted		SHEET

21 OF 39

EdgeWater\Phase1\SS20 07-05-E836