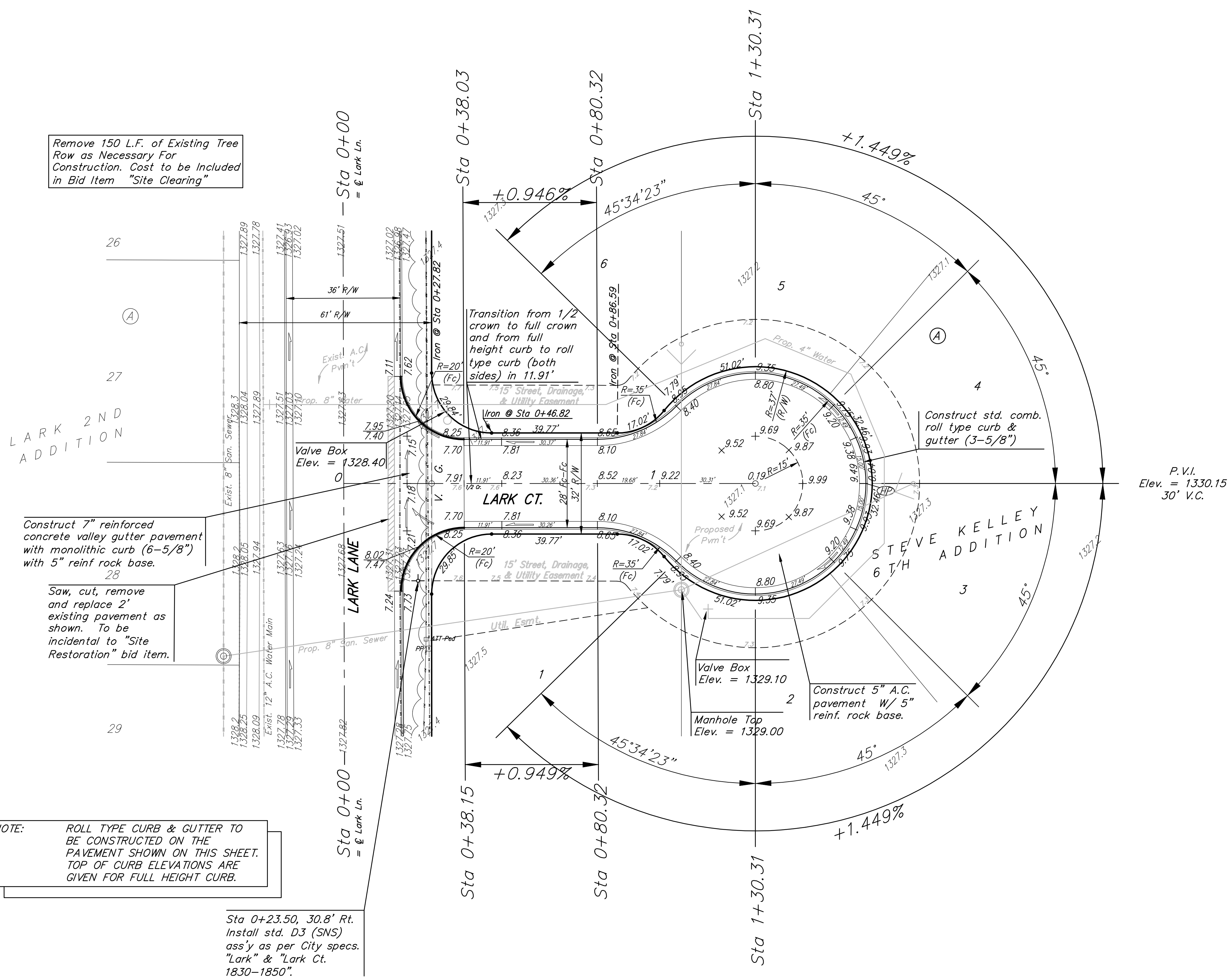
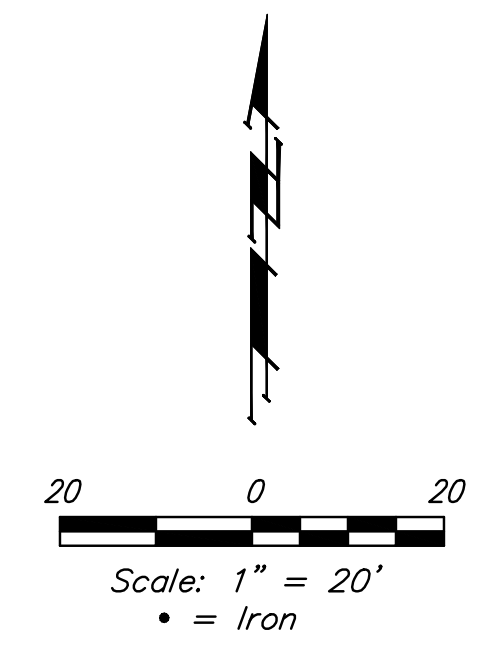


BENCHMARK:

SQUARE CUT TOP OF
CURVE 9 FEET WEST OF
NORTHWEST CORNER OF
LOT AT 1900 S. LARK
ELEV. = 1328.49 (NAVD 88)



Remove 150 L.F. of Existing Tree Row as Necessary For Construction. Cost to be Included in Bid Item "Site Clearing"

LARK 2ND ADDITION

Construct 7" reinforced concrete valley gutter pavement with monolithic curb (6-5/8") with 5" reinf rock base.

Saw, cut, remove and replace 2' existing pavement as shown. To be incidental to "Site Restoration" bid item.

NOTE: ROLL TYPE CURB & GUTTER TO BE CONSTRUCTED ON THE PAVEMENT SHOWN ON THIS SHEET. TOP OF CURB ELEVATIONS ARE GIVEN FOR FULL HEIGHT CURB.

Sta 0+23.50, 30.8' Rt. Install std. D3 (SNS) ass'y as per City specs. "Lark" & "Lark Ct. 1830-1850".

P.V.I. Elev. = 1330.15
30' V.C.

| | | |
|---|---|----------------|
| | STEVE KELLEY 6TH ADDITION | |
| | LARK CT. STREET PAVING IMPROVEMENTS | |
| <small>Baughman Company, P.A. 315 Bilt St. Walnut, KS 67121 P 316-262-2221 F 316-262-0149 ENGINEERING SURVEYING PLANNING LANDSCAPE ARCHITECTURE</small> | | |
| PROJECT NUMBER | DESIGN | DRAWN |
| | TJW | TJW |
| REVISIONS: | APPROVED | DATE |
| | NBW | MAY 2010 |
| | SCALE | |
| | Noted | |
| | SHEET | 5 OF 14 |
| <small>Steve Kelley 6th Addition\STR</small> | | |