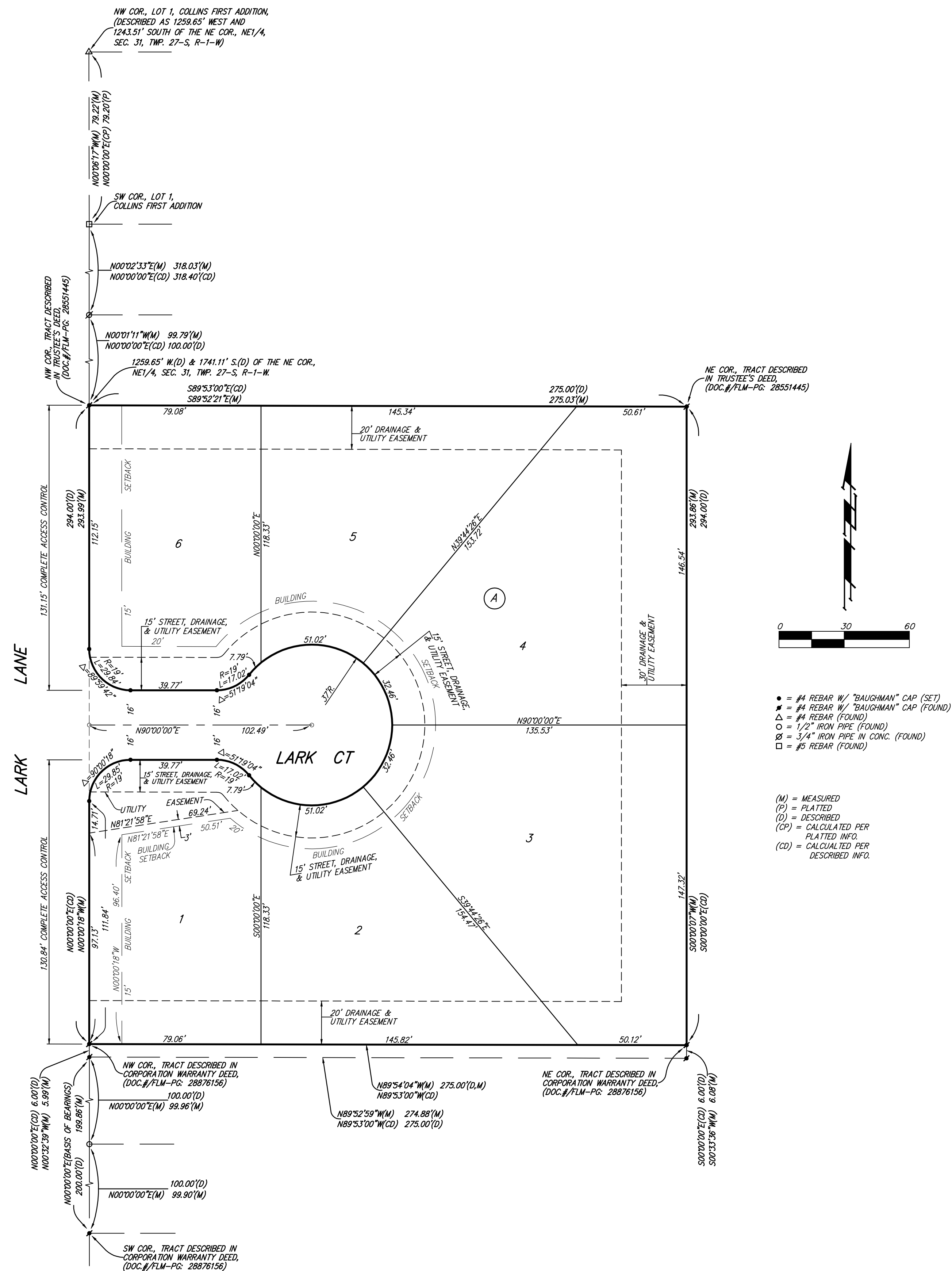


# STEVE KELLEY 6TH ADDITION

## WICHITA, SEDGWICK COUNTY, KANSAS



**NOTE:**  
A master grading plan for drainage has been developed for this subdivision and is on file with the City of Wichita, Kansas. All drainage easements, rights-of-way, or reserves shall remain at established grades or as modified with the approval of the City Engineer of the City of Wichita, Kansas. No obstructions which impede the flow of this drainage system shall be allowed.

State of Kansas) SS We, Baughman Company, P.A., Surveyors in  
Sedgwick County) aforesaid county and state do hereby certify that we have surveyed and  
platted "STEVE KELLEY 6TH ADDITION", Wichita, Sedgwick County, Kansas  
and that the accompanying plat is a true and correct exhibit of the  
property surveyed, described as beginning at a point 1259.65 feet west  
of the Northeast corner of Section 31, Township 27 South, Range 1 West of  
the Sixth Principal Meridian, Sedgwick County, Kansas; thence with a  
deflection left of 90°07', a distance of 1741.11 feet to a point of  
beginning; thence south 294.00 feet, thence east 275.00 feet; thence  
north 294.00 feet; thence west 275.00 feet to a point of beginning.  
Existing public easements and dedications  
being vacated by virtue of K.S.A. 12-512(b).  
Baughman Company, P.A.

Michael G. Conrey, Surveyor

Know all men by these presents that we, the undersigned owners, have caused the land in the surveyors certificate to be platted into Lots, a Block, and a Street, to be known as "STEVE KELLEY 6TH ADDITION", Wichita, Sedgwick County, Kansas. The utility easement is hereby granted as indicated for the construction and maintenance of all public utilities. The drainage and utility easements are hereby granted as indicated for drainage purposes and for the construction and maintenance of all public utilities. The street, drainage and utility easements are hereby granted as indicated for street related purposes, for drainage purposes, and for the construction and maintenance of all public utilities. The street is hereby dedicated to and for the use of the public. Access controls shall be as depicted on the face of the plat and are hereby granted to the City of Wichita, Kansas.

Kelley Commercial, Inc., a Kansas corporation f/k/a  
Kelley & Coleman, Inc., a/k/a Kelly & Coleman, Inc.

Stephen R. Kelley, President

State of Kansas) SS The foregoing instrument acknowledged before  
Sedgwick County) me, this \_\_\_\_\_ day of \_\_\_\_\_, 2010, by Stephen R. Kelley,  
President of Kelley Commercial, Inc., a Kansas corporation f/k/a, Kelley &  
Coleman, Inc., a/k/a Kelly & Coleman, Inc., on behalf of the corporation.

Notary Public

My App't. Exp. \_\_\_\_\_

This plat of "STEVE KELLEY 6TH ADDITION",  
Wichita, Sedgwick County, Kansas has been submitted to and approved by  
the Wichita-Sedgwick County Metropolitan Area Planning Commission,  
Wichita, Kansas.

G. Nelson Van Fleet, Chair

John L. Schlegel, Secretary

This plat approved and all dedications  
shown hereon accepted by the City Council of the City of Wichita,  
Kansas, this \_\_\_\_\_ day of \_\_\_\_\_, 2010.

Carl Brewer, Mayor

Karen Sublett, City Clerk

Reviewed in accordance with K.S.A. 58-2005  
on this \_\_\_\_\_ day of \_\_\_\_\_, 2010.

Tricia L. Robello, L.S. #1246  
Deputy County Surveyor  
Sedgwick County, Kansas

Entered on transfer record this \_\_\_\_\_ day  
of \_\_\_\_\_, 2010.

Kelly B. Arnold, County Clerk

State of Kansas) SS This is to certify that this plat has been  
Sedgwick County) filed for record in the office of the Register of Deeds, this \_\_\_\_\_ day  
of \_\_\_\_\_, 2010 at \_\_\_\_\_ o'clock \_\_\_\_\_ M.; and is duly recorded.

Bill Meek, Register of Deeds

Tonya Buckingham, Deputy

