

KANSAS DEPARTMENT OF TRANSPORTATION
 PLAN SHEET
 TYLER ROAD
 STA. 594+88.15 TO STA. 598+50.00

Wichita Water/Sewer Dept.
 8th Floor - City Hall
 455 N. Main
 Wichita, KS 67202
 Bill Perkins
 (316) 268-4555
 Southwestern Bell
 David Langley, Room 210
 154 N. Broadway, Room 210
 Wichita, KS 67202
 Cox Communications
 Byron Ring
 801 E. Douglas
 Wichita, KS 67202
 316-262-4270
 Kansas Gas Service
 Chantene Lowless
 1021 E. 26th Street N.
 Wichita, KS 67219
 316-832-3122
 Kansas Gas / Electric
 Shame Price
 316-261-6251

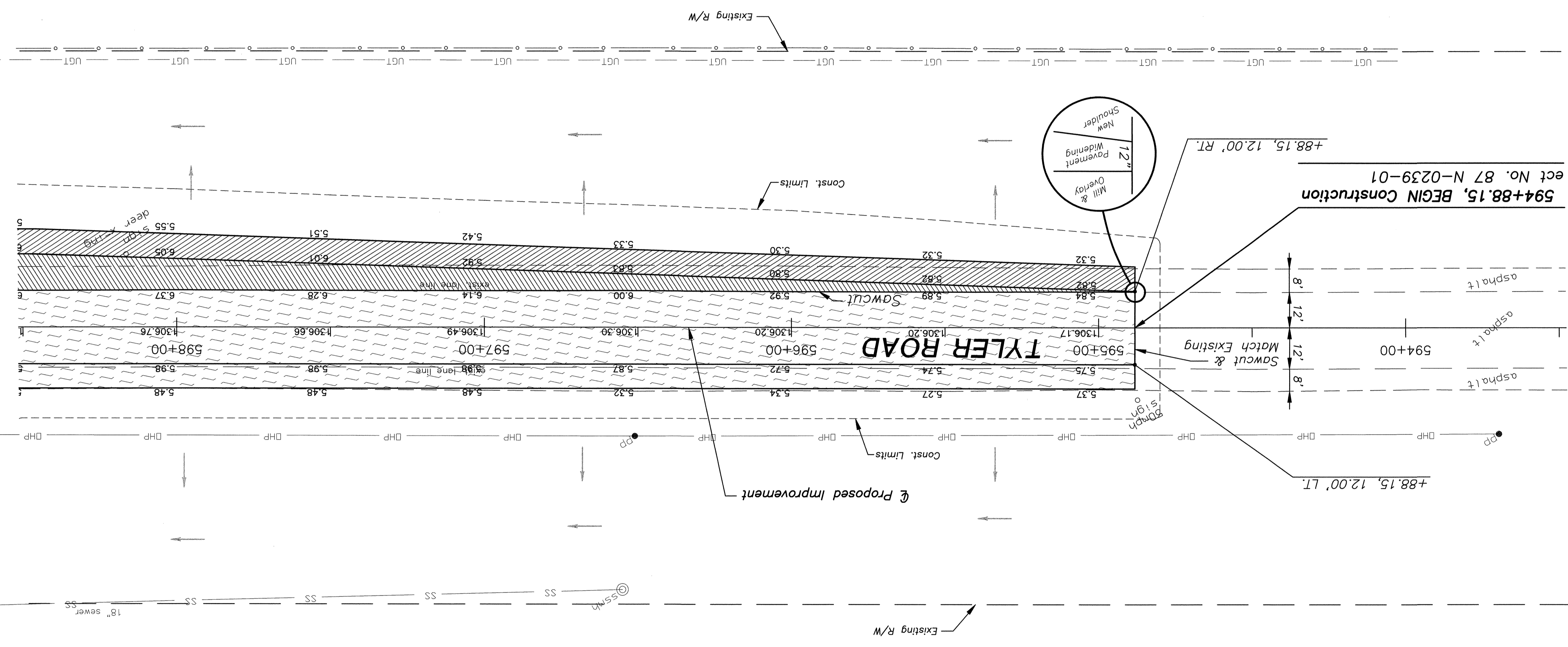
UTILITIES:

GENERAL NOTES
 THE GEOLOGICAL INFORMATION SHOWN ON THESE PLANS IS FROM STUDIES MADE IN THE FIELD AND REPRESENTS THE BEST INFORMATION AVAILABLE TO THE KANSAS DEPARTMENT OF TRANSPORTATION.
 AT BORROW AREA LOCATIONS ADJACENT TO THE RIGHT OF WAY, UTILITY POLES MAY BE SET AT THE PERMANENT LOCATIONS PRIOR TO CONSTRUCTION AS APPROVED BY THE ENGINEER PROVIDED A MINIMUM VERTICAL CLEARANCE, IN ACCORDANCE WITH THE NATIONAL ELECTRICAL SAFETY CODE, IS OBTAINED. THE CONTRACTOR WILL BE REQUIRED TO WORK AROUND THESE POLES TO COMPLETE THE WORK.
 ALL BORROW TO BE OBTAINED FROM AREAS PROVIDED BY THE CONTRACTOR SHALL BE APPROVED BY THE ENGINEER, BOTH AS TO SUITABILITY OF MATERIAL AND SITE LOCATION. LOCATIONS WHICH, IN THE OPINION OF THE ENGINEER, CONTAIN UNSUITABLE MATERIAL OR WILL LEAVE AN UNSIGHTLY APPEARANCE ON THE PROJECT WILL NOT BE APPROVED.
 CHANNELS SHALL BE CUT AT BOX CULVERTS (UNLESS OTHERWISE NOTED) TO FLOW LINE ELEVATIONS AND TO A WIDTH OF 1'-0" OUTSIDE OF EACH OUTSIDE WALL AND WITH 2:1 SLOPES PRIOR TO CONSTRUCTION OF THE CULVERT. EMBANKMENT QUANTITIES FOR INITIAL CONSOLIDATION AND SETTLEMENT SHOWN IN THE EARTHWORK QUANTITIES ARE SUBSIDIARY TO OTHER EARTHWORK ITEMS. MATERIAL FOR THE EMBANKMENT IS INCLUDED IN THE EXCAVATION QUANTITIES. EXCAVATION REQUIRED FOR PLACING SELECT SOIL IS INCLUDED IN THE COMMON EXCAVATION QUANTITIES. WHERE EASEMENTS ARE SHOWN ON RAILROAD RIGHT OF WAY, THE CONTRACTOR SHALL BE REQUIRED TO WORK AROUND POLES OR LINES.
 EXCAVATION SHOWN TO BE WASTED SHALL BE WASTED ON SITES PROVIDED BY THE CONTRACTOR. THESE SITES SHALL BE APPROVED BY THE ENGINEER AS TO SUITABILITY, APPEARANCE, AND SITE LOCATION. IN THE OPINION OF THE ENGINEER, WILL LEAVE AN UNSIGHTLY APPEARANCE WILL NOT BE APPROVED.
 ALL TREES, HEDGE ROWS, SHELTERBELTS, AND WOODY SHRUBS NOT SHOWN TO BE REMOVED AND LOCATED BETWEEN THE CONSTRUCTION LIMITS AND THE RIGHT-OF-WAY LINE OR EASEMENT LINE SHALL BE SPARED UNLESS DIRECTED BY THE ENGINEER TO BE REMOVED. ALL TREES WITHIN THE APPROPRIATE CLEAR ZONE SHALL BE REMOVED.
 EXISTING CULVERTS TO BE ABANDONED IN PLACE SHALL BE REMOVED TO REMAIN IN PLACE SHALL BE PLUGGED. ALL COSTS FOR PLUGGING CULVERTS SHALL BE INCLUDED. IN THE BID ITEM "REMOVAL OF EXISTING STRUCTURES."

LEGEND

	Mill and Overlay
	New Shoulder
	Pavement Widening

NOTE
 Shoulders, 8' (Typ.), unless otherwise noted.

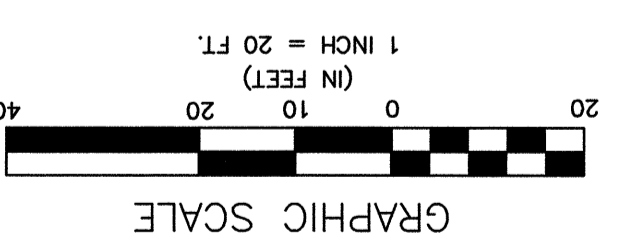


594+88.15, BEGIN Construction
 ect No. 87 N-0239-01

+88.15, 12.00' RT.

+88.15, 12.00' LT.

P.O.T. Sta. 593+00.00 @ Tyler Rd
 MAG Nail @ P.O.T. (set)
 1. "+" Cut on conc. wash check, SE corner 38.03' WNW
 2. MAG Nail in Power Pole 77.35' NW
 3. Face of brace post at horizontal cross bar 102.6' NE



STATE	PROJECT NO.	YEAR	SHEET NO.	TOTAL SHEETS
KANSAS	87 N-0239-01	2004	3	47