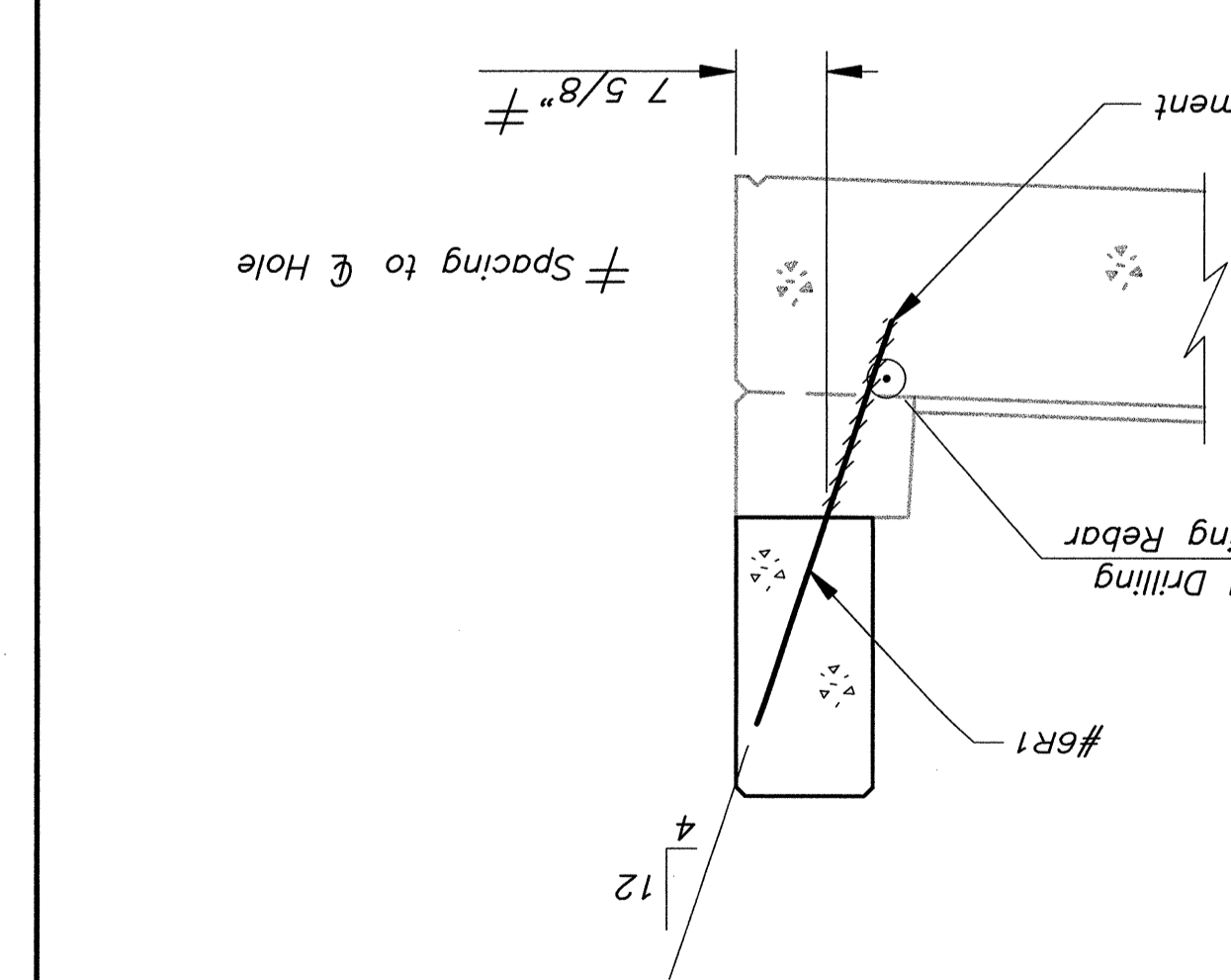


KANSAS	PROJECT NO.	87 N-0239-01	YEAR	2004	SHEET NO.	13	SHEET TOTAL	47
--------	-------------	--------------	------	------	-----------	----	-------------	----



DRILL & GROUT DETAIL
Scale: 3/4" = 1'-0"

RAIL QUANTITIES			
Location	Concrete	Reinforcing Steel	
603+30, Rt.	0.4 Cu. Yds.	220 Lbs.	
603+48, Lt.	0.4 Cu. Yds.	220 Lbs.	
Total	0.8 Cu. Yds.	440 Lbs.	

GENERAL NOTES

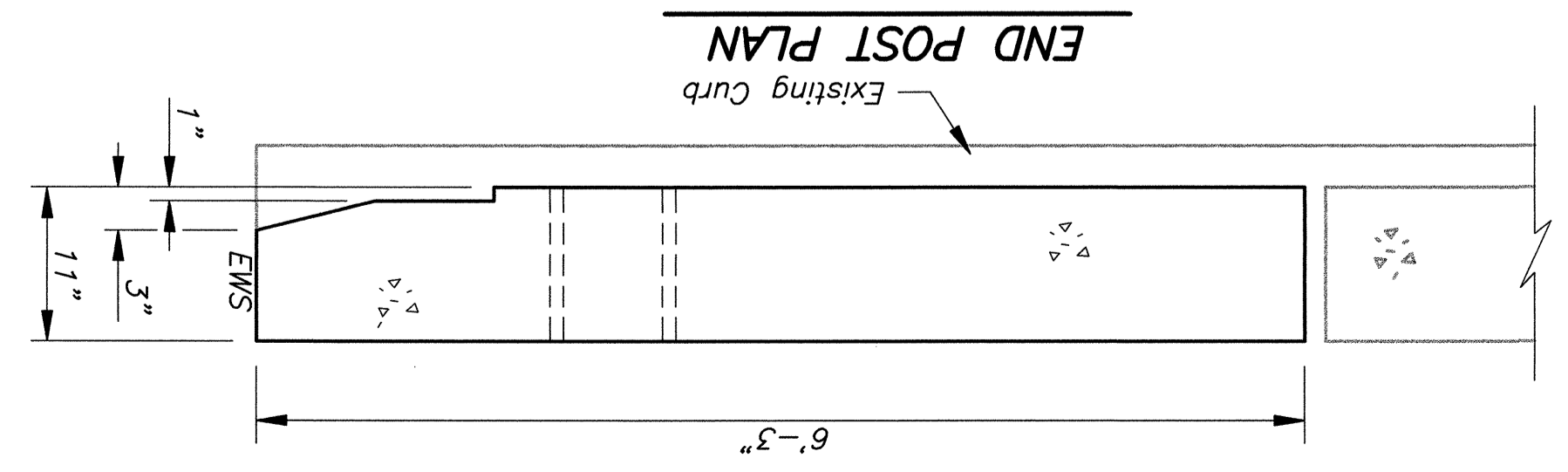
DRILLING & EPOXY GROUTING:
The drilling and epoxy of new reinforcing steel shall be in accordance with KDOT Specifications and shall not be paid for directly, but shall be subsidiary to other bid items.

REINFORCING STEEL:
All Reinforcing Steel dimensions are to the centerline of bars unless otherwise noted. All reinforcing steel shall conform to the requirements of ASTM A615-96, Grade 60.

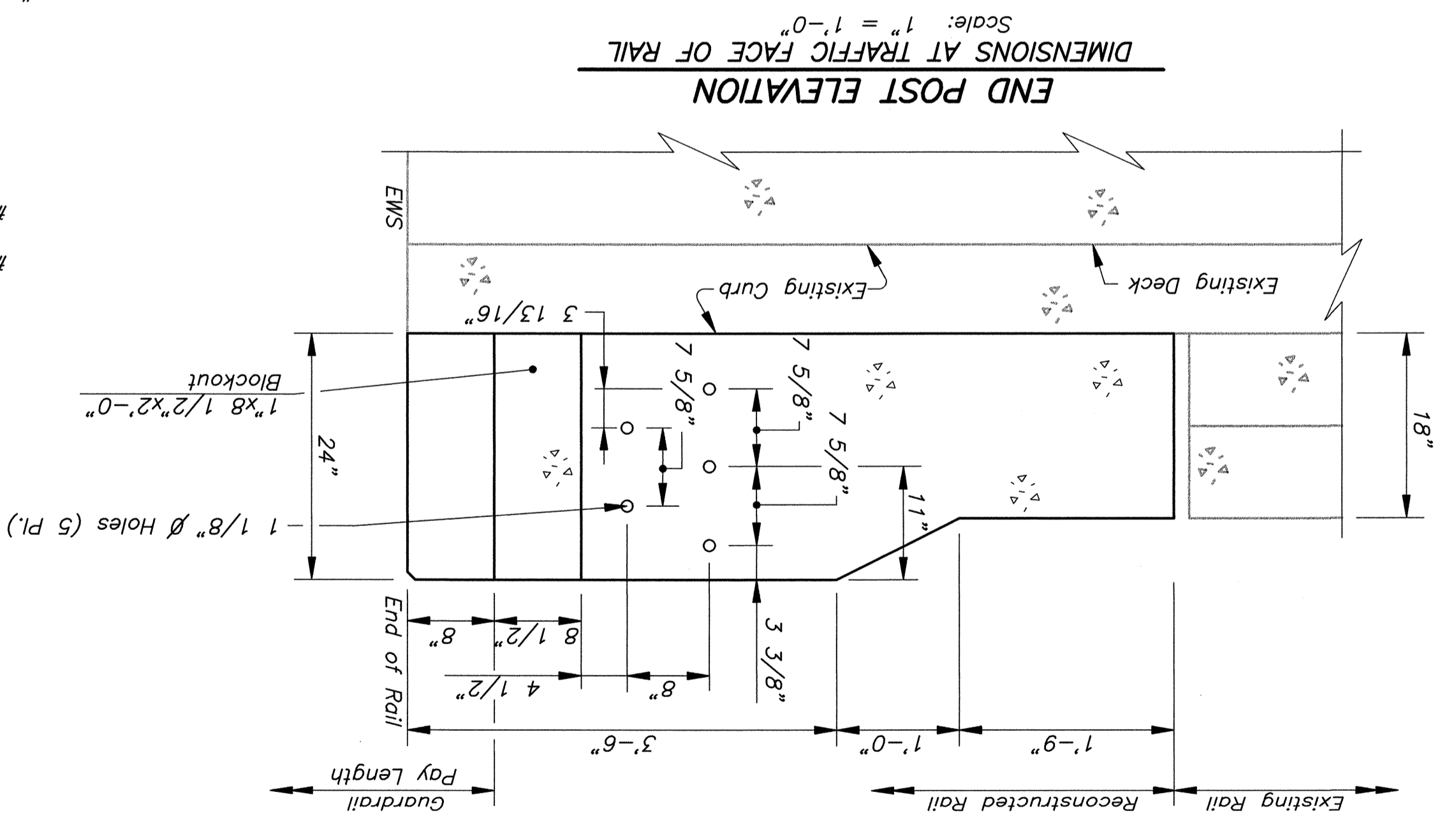
CONCRETE:
Rail concrete is bid as Concrete Class AA(AE). Bevel all exposed edges of concrete with a 3/4" triangular molding, except as otherwise noted on the plans.

UNIT STRESSES:
Concrete Class AA (AE) $f'_c = 4,000$ psi
Reinforcing Steel (Grade 60) $f_y = 60$ psi

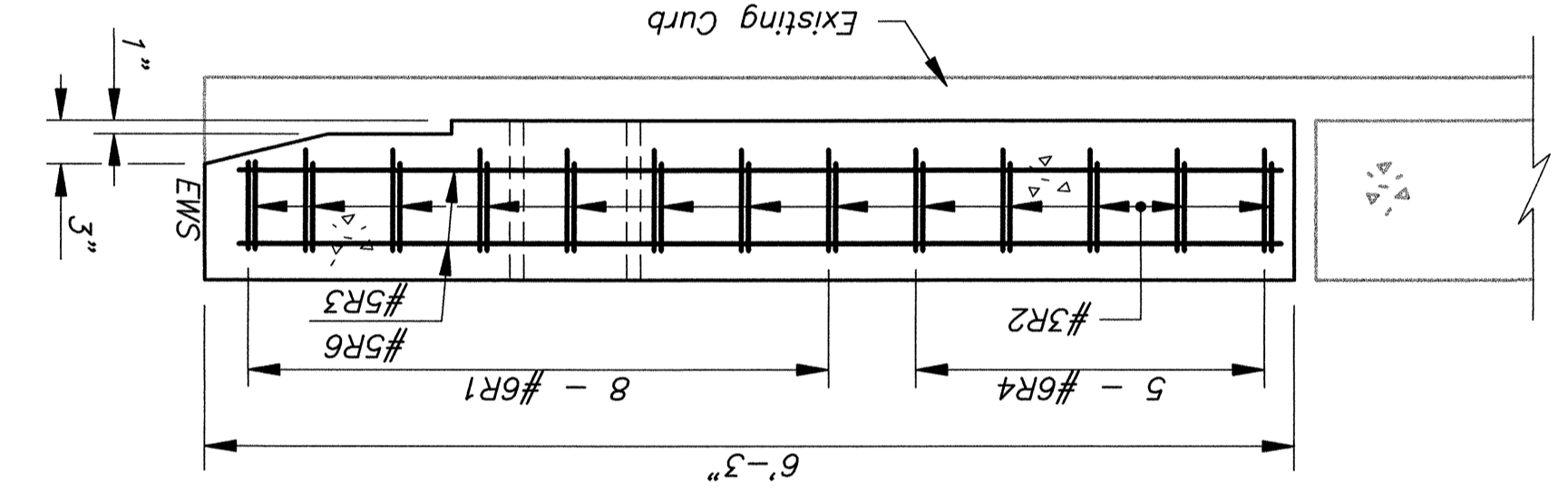
KANSAS DEPARTMENT OF TRANSPORTATION
RAIL DETAILS



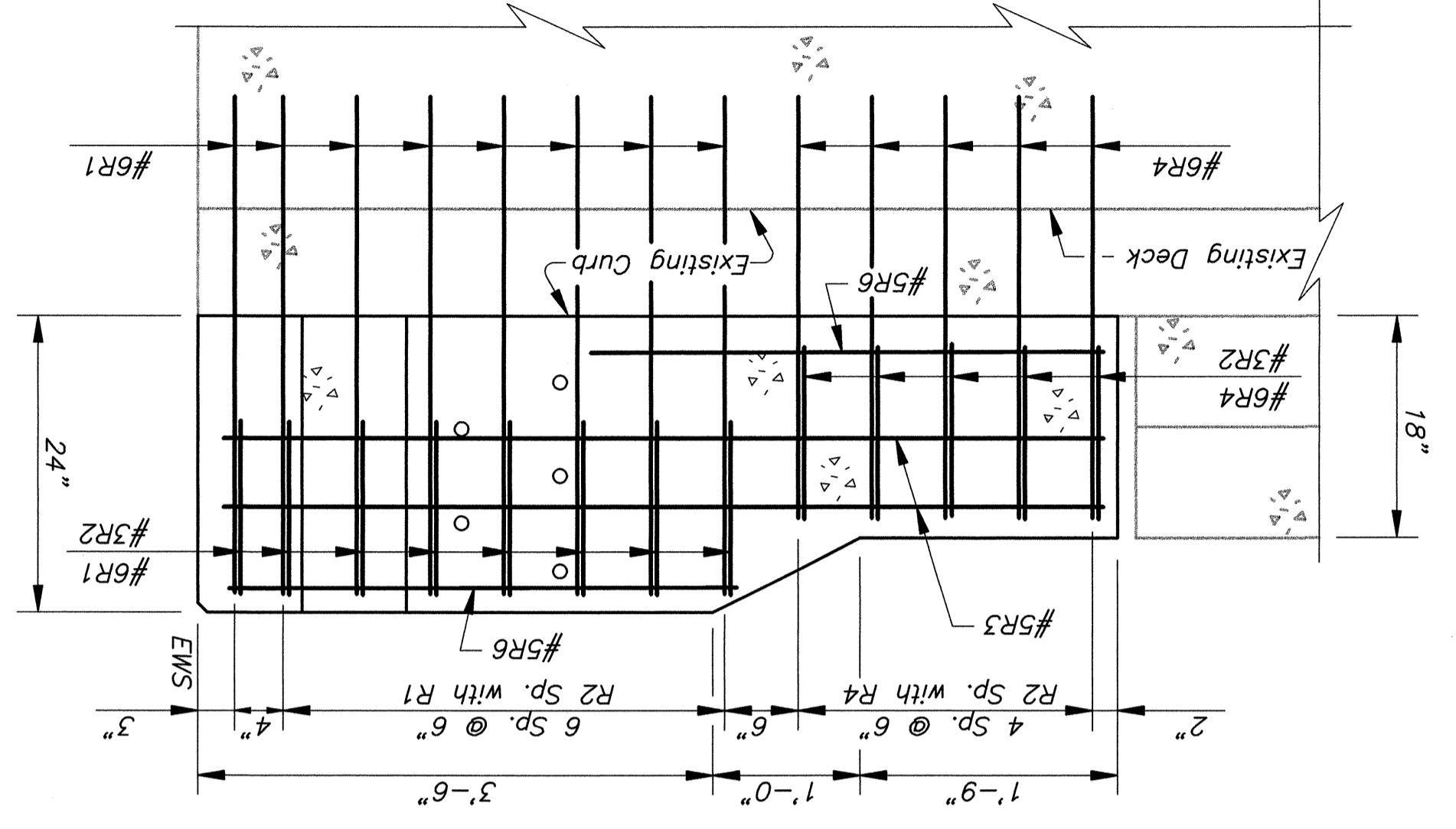
END POST PLAN



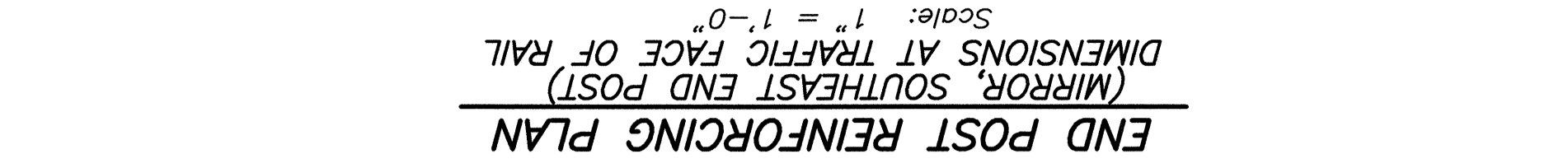
END POST ELEVATION
Scale: 1" = 1'-0"



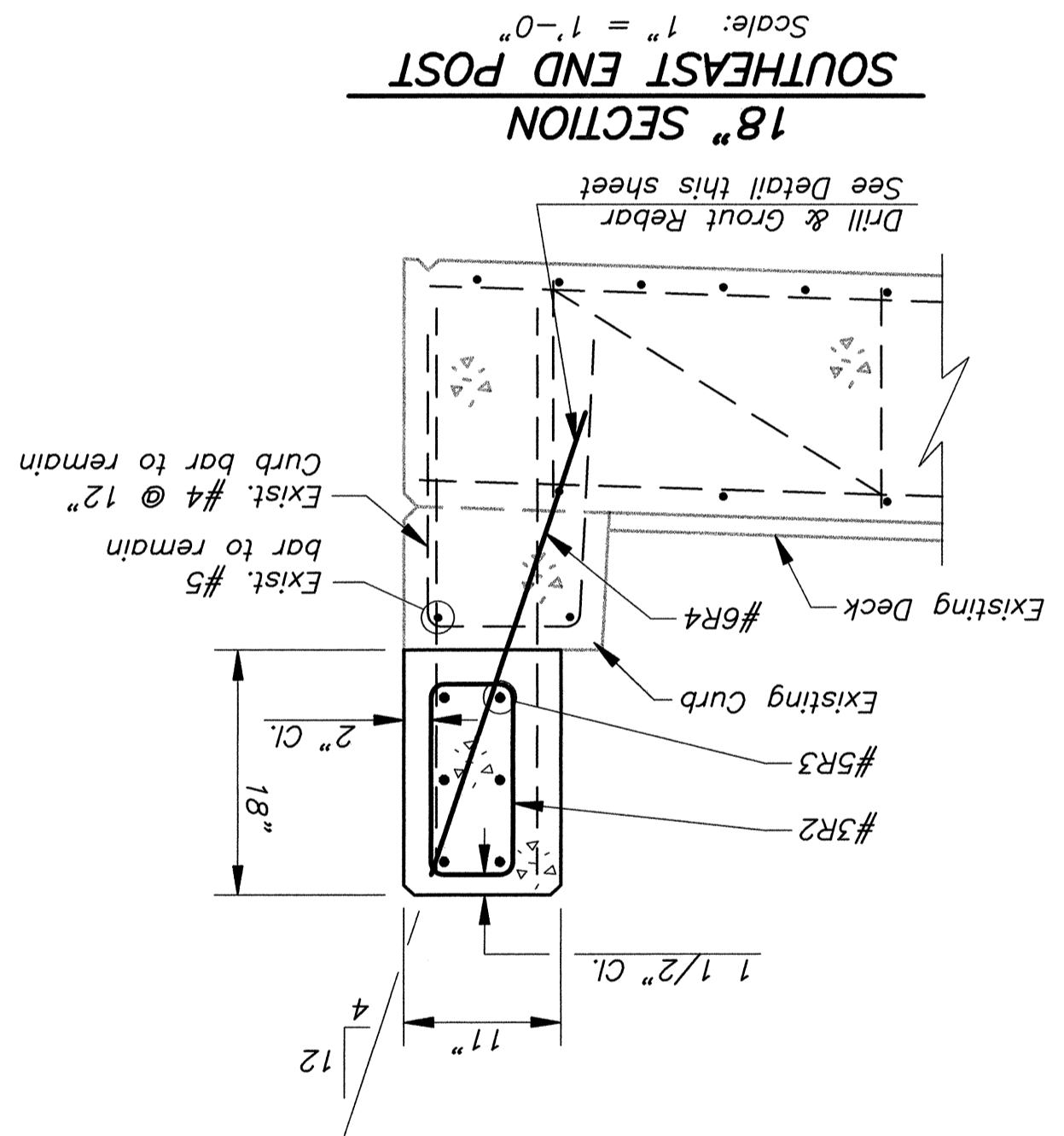
DIMENSIONS AT TRAFFIC FACE OF RAIL
Scale: 1" = 1'-0"



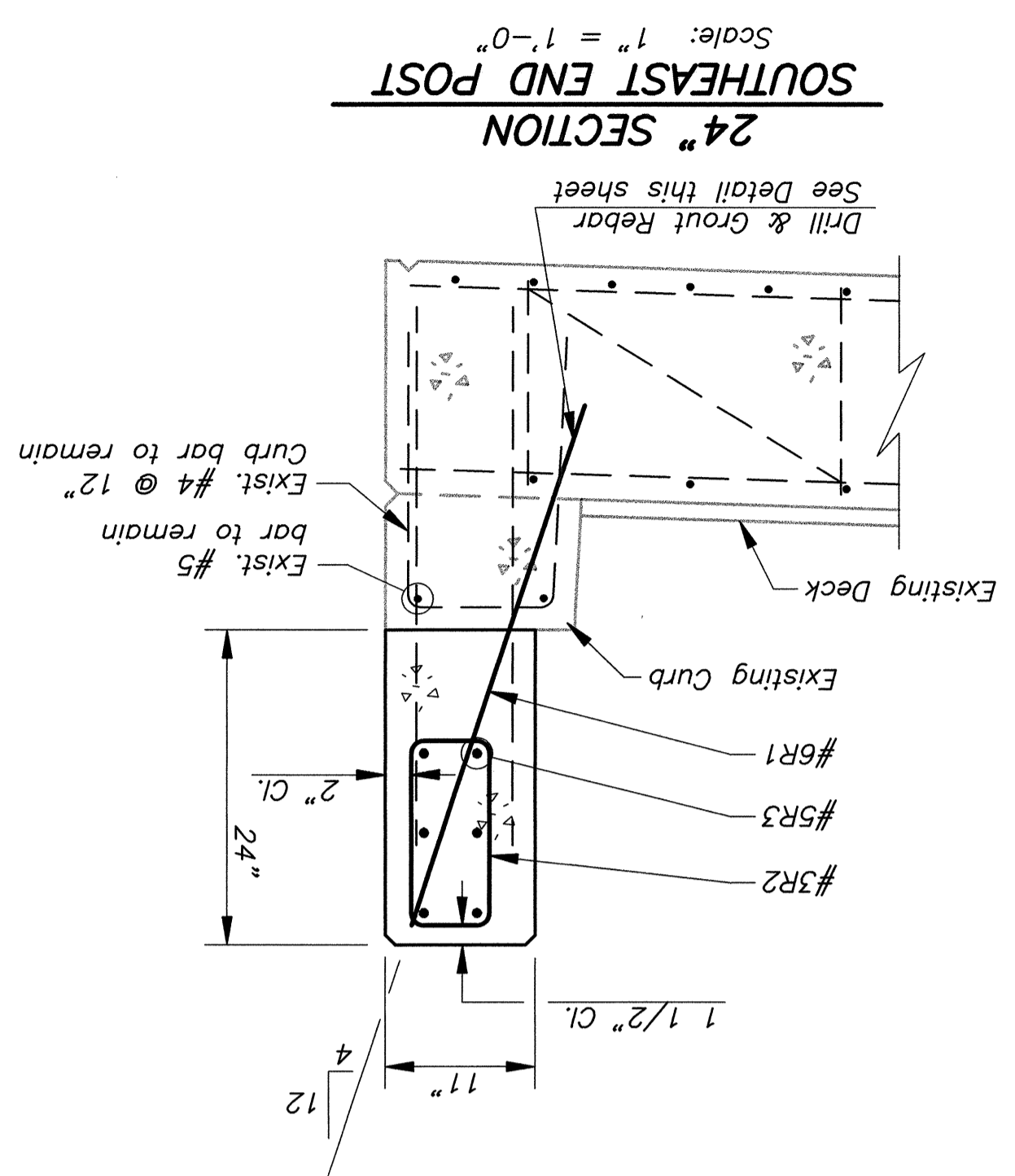
BARRIER REINFORCING PLAN
Scale: 1" = 1'-0"



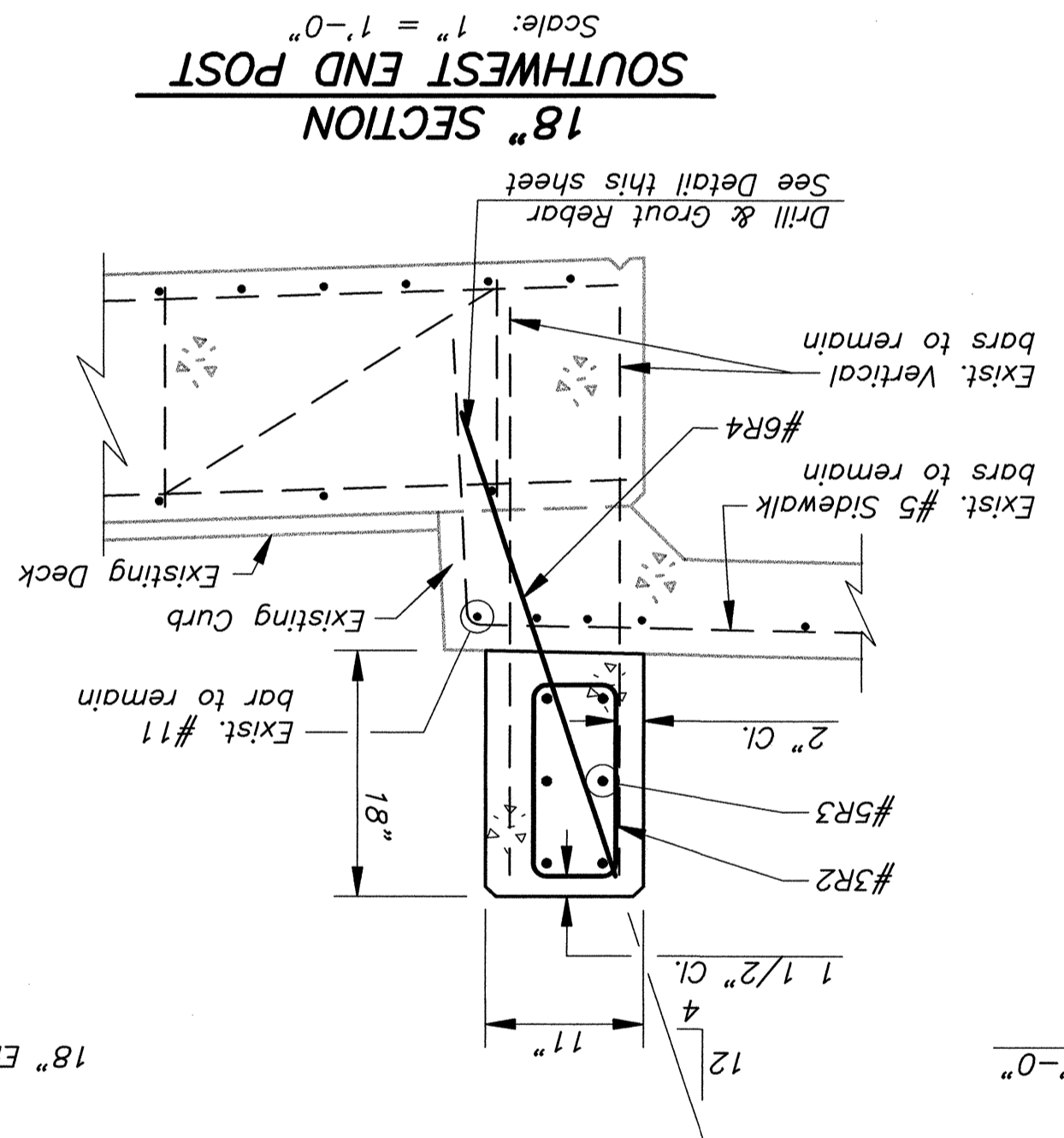
END POST REINFORCING PLAN (MIRROR, SOUTHEAST END POST)
Scale: 1" = 1'-0"



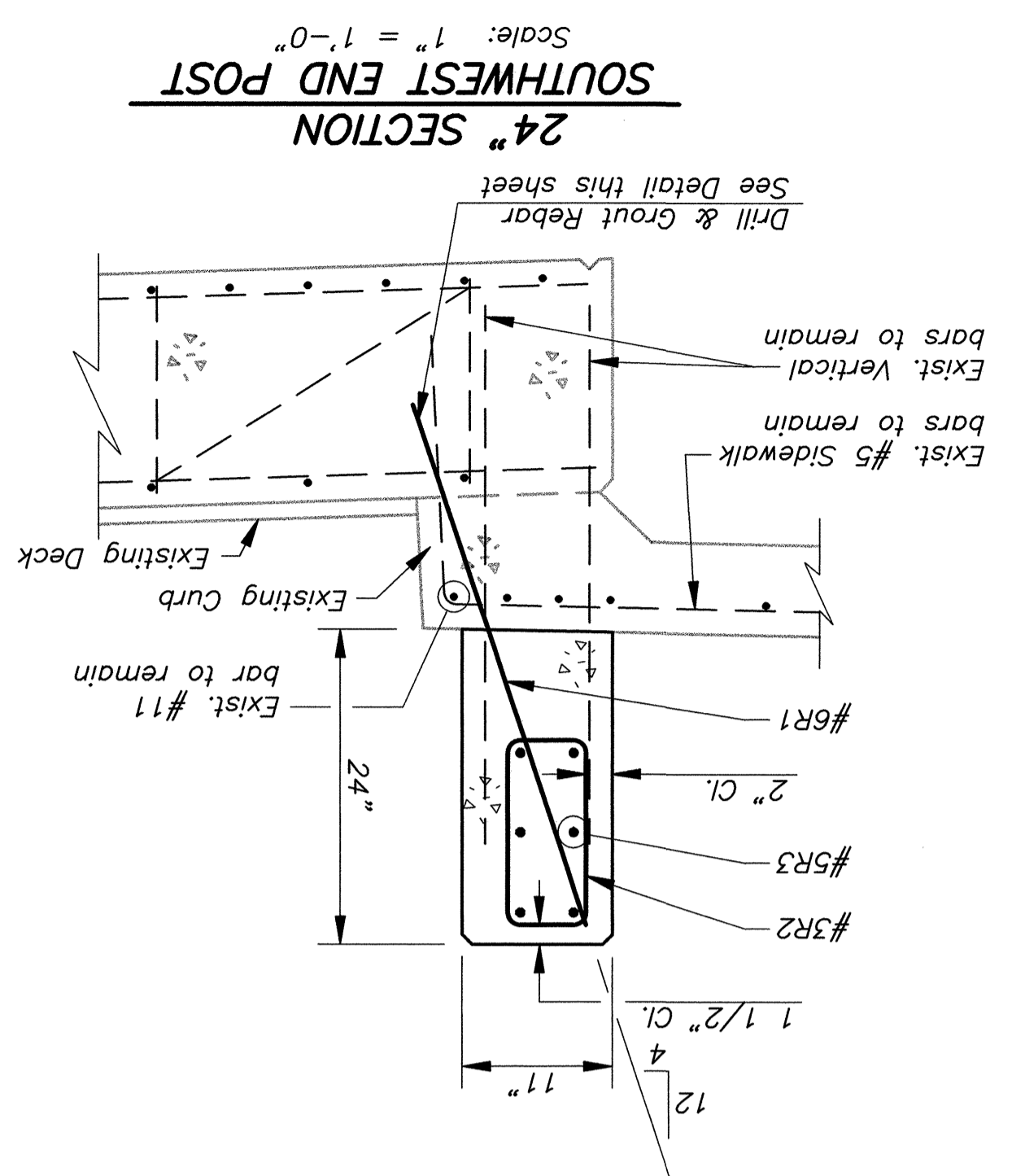
18" SECTION
Scale: 1" = 1'-0"



24" SECTION
Scale: 1" = 1'-0"



18" SECTION
Scale: 1" = 1'-0"



24" SECTION
Scale: 1" = 1'-0"