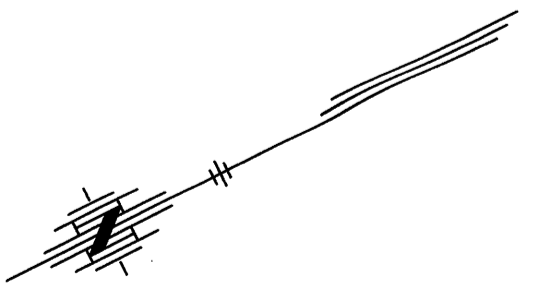
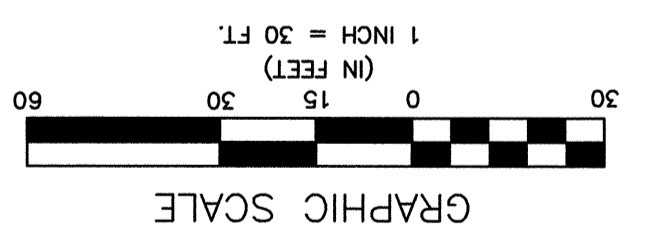
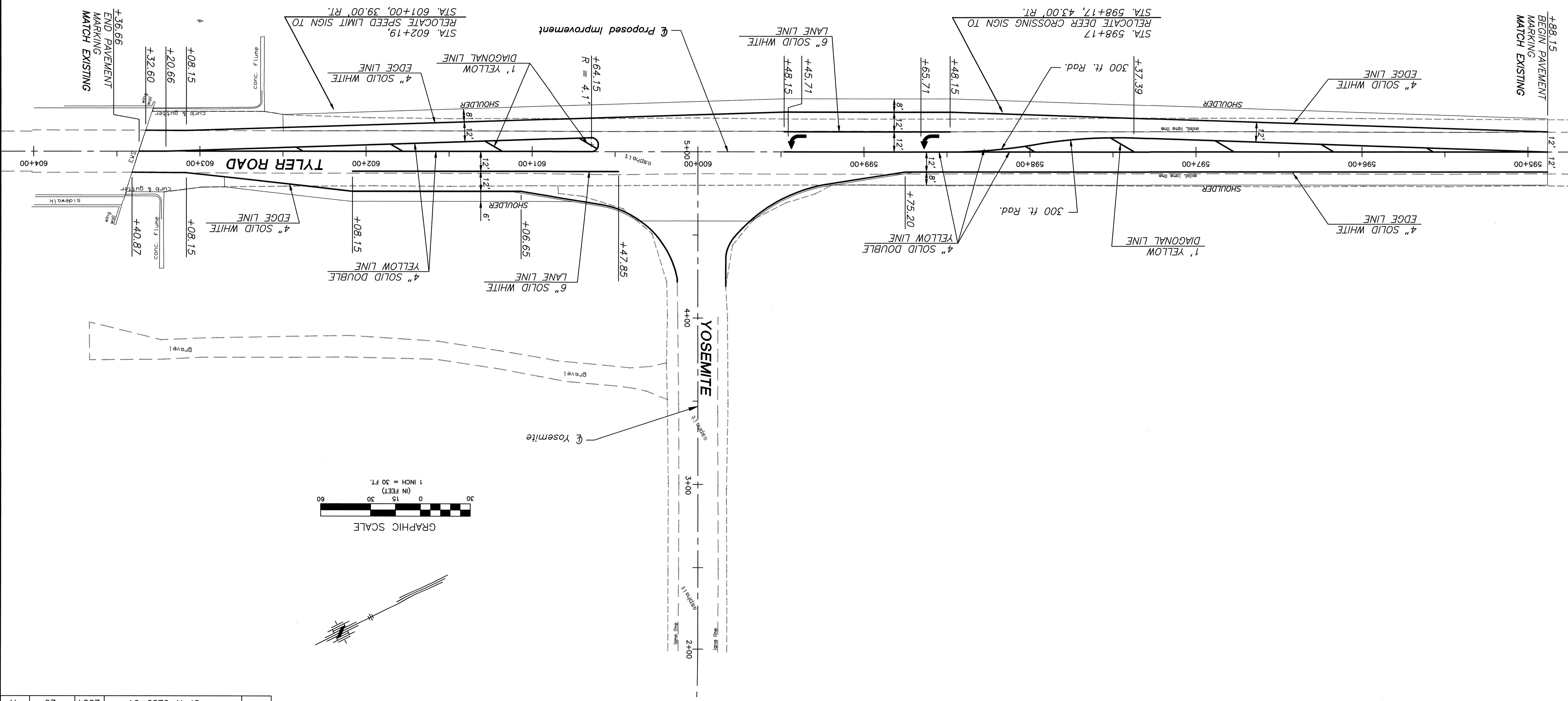


KANSAS DEPARTMENT OF TRANSPORTATION  
 PAVEMENT MARKING/SIGNING PLAN  
 TYLER ROAD  
 STA. 594+88.15 TO STA. 603+36.66

SEE "SUMMARY OF QUANTITIES FOR  
 PAVEMENT MARKING QUANTITIES."



REFERENCES NOTED	BY	DATE
REFERENCES CHECKED		

KANSAS	PROJECT NO.	YEAR	SHEET NO.	TOTAL SHEETS
87 N-0239-01	2004	26	47	