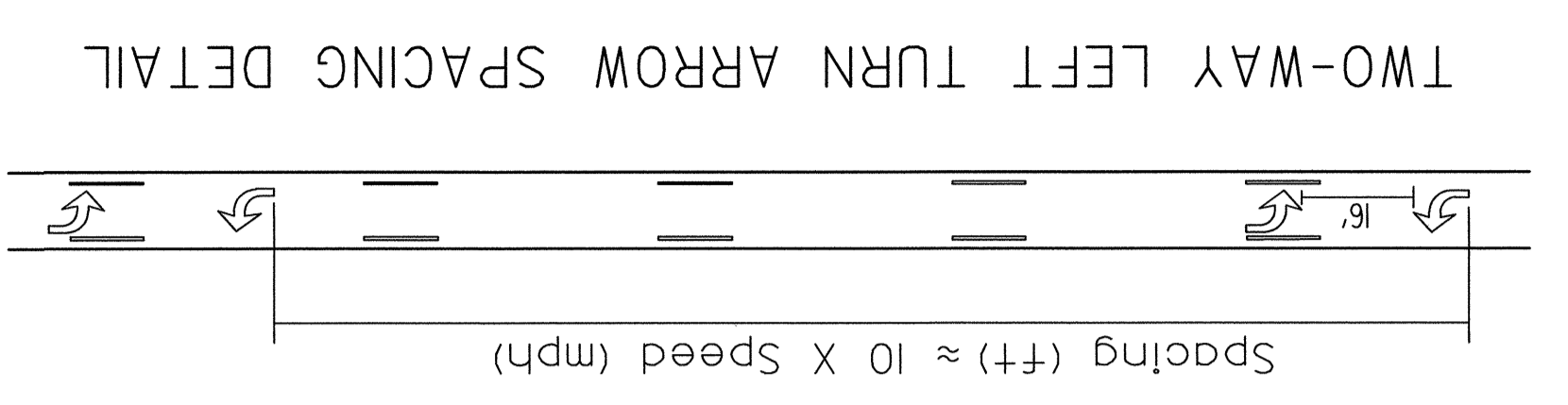
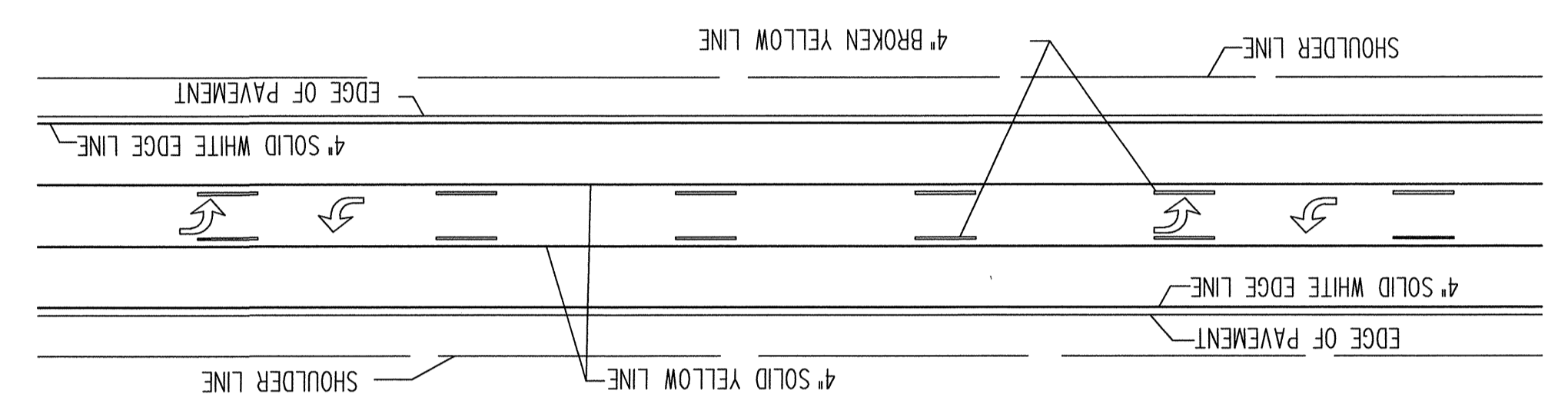


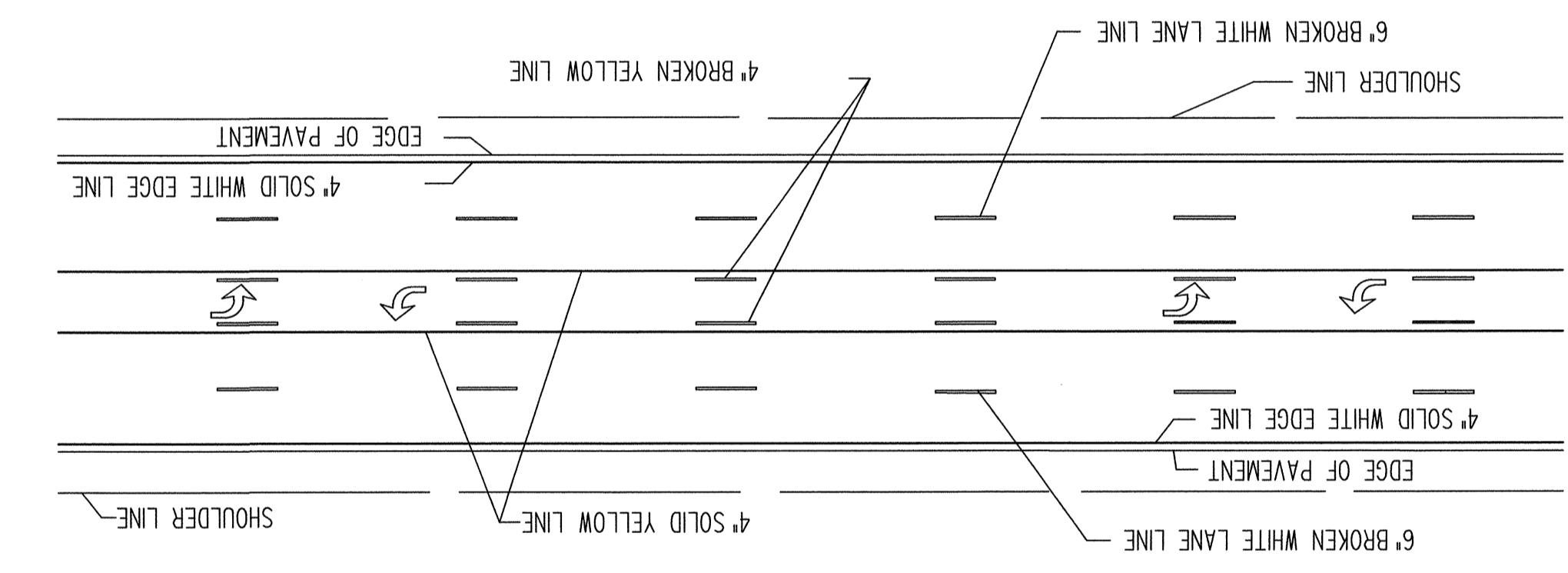
NOTE: If arrows are used space the arrows as shown in the spacing detail



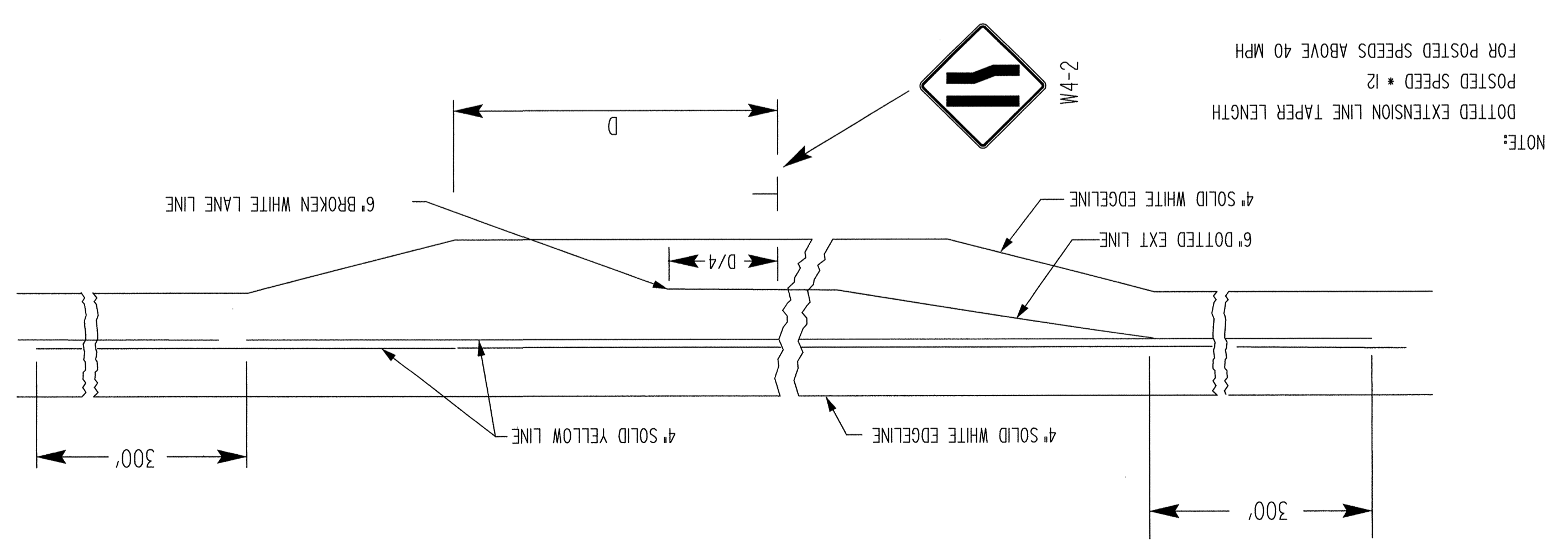
TWO-WAY LEFT TURN DETAIL FOR THREE LANE ROADWAY



TWO-WAY LEFT TURN DETAIL FOR FIVE LANE ROADWAY

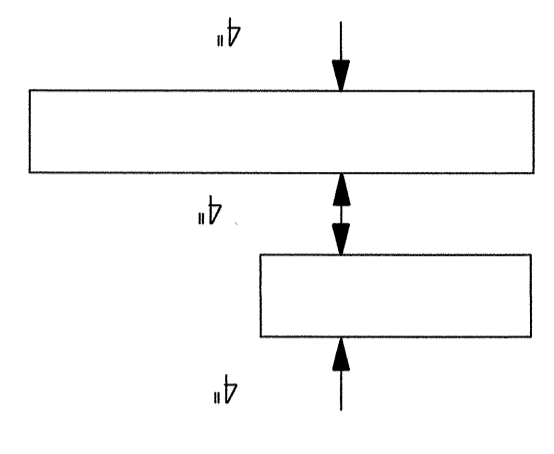


TYPICAL MARKING FOR AUXILIARY PASSING LANE

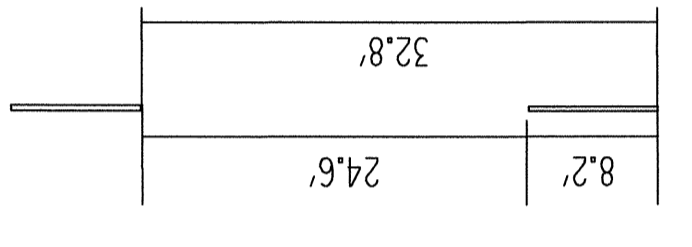


NOTE:  
 DOTTED EXTENSION LINE TAPER LENGTH  
 POSTED SPEED = 12  
 FOR POSTED SPEEDS ABOVE 40 MPH

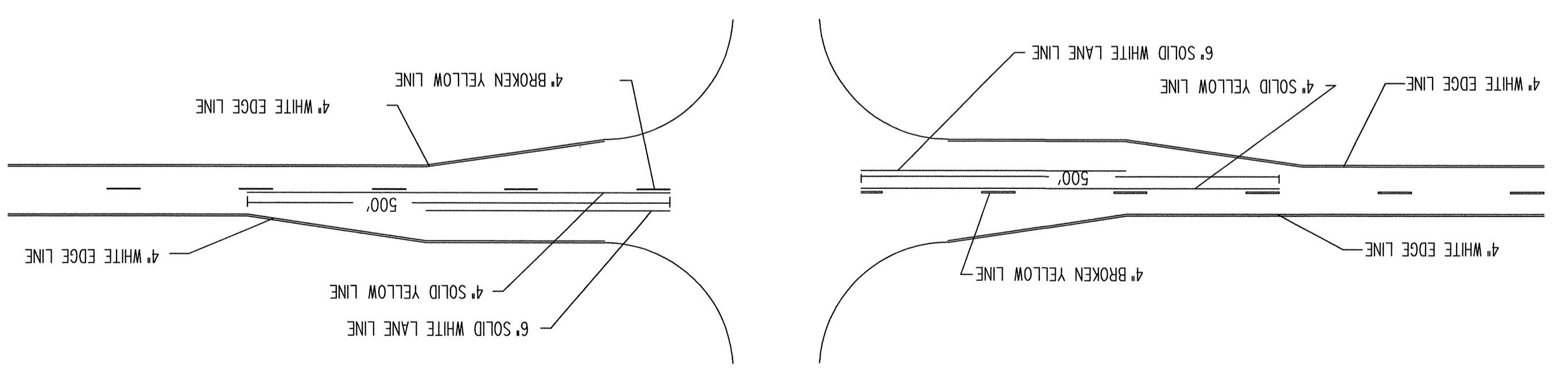
TYPICAL SPACING FOR NO PASSING LINES UNLESS OTHERWISE NOTED ON PLANS



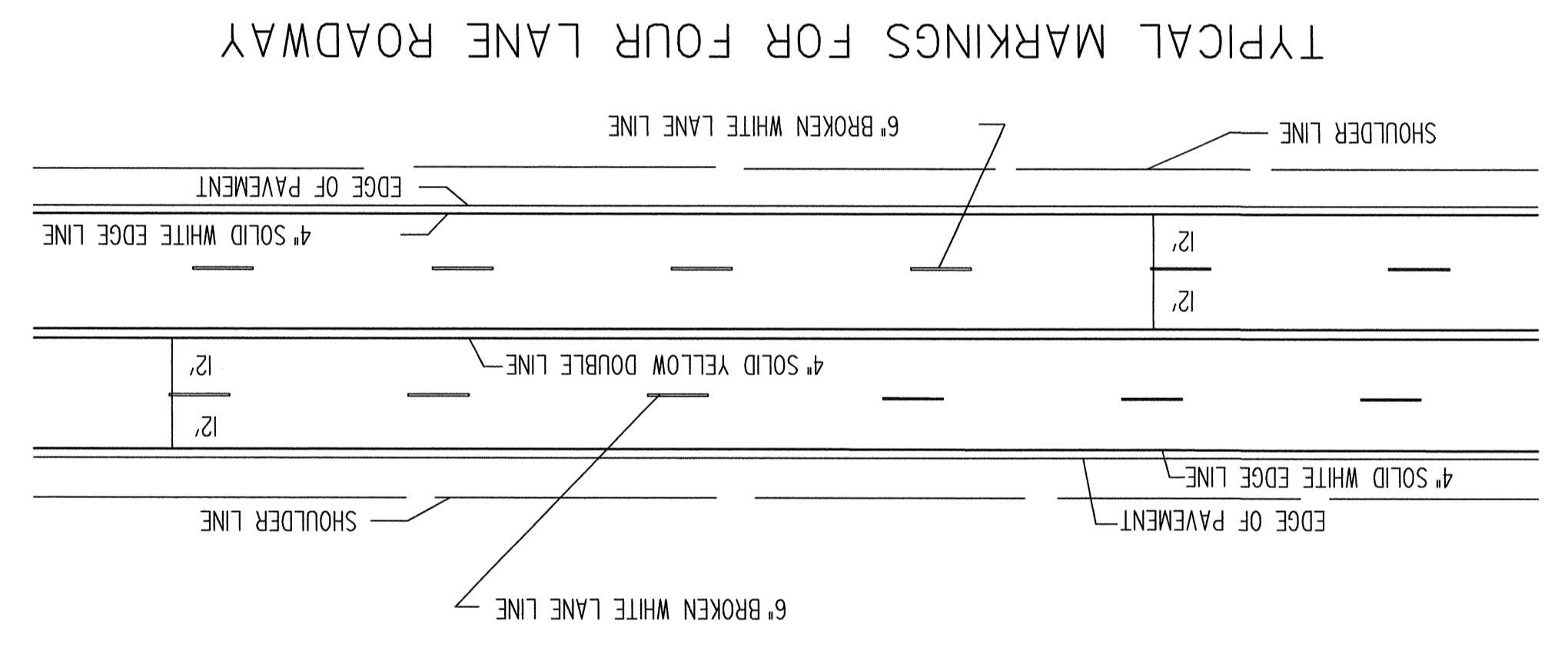
TYPICAL SPACING FOR BROKEN LINES UNLESS OTHERWISE NOTED ON PLANS



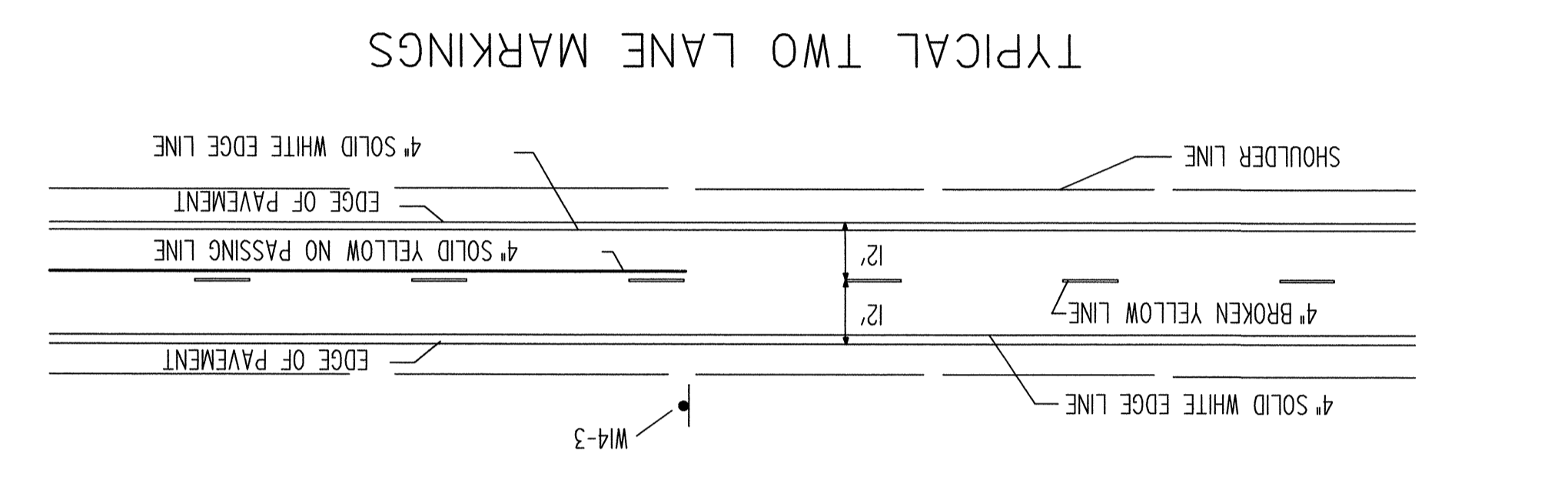
NOTE: ALL PAVEMENT MARKINGS SHALL BE BROKEN AT CROSS ROADS.  
 FOR HIGHWAY JUNCTIONS THE NO PASSING ZONE WILL EXTEND 1000' FROM INTERSECTION



TYPICAL ROAD JUNCTION MARKINGS WITH BYPASS LANES



TYPICAL MARKINGS FOR FOUR LANE ROADWAY



TYPICAL TWO LANE MARKINGS

NOTE: LONGITUDINAL PAVEMENT MARKING LINES SHALL BE OFFSET A MINIMUM OF 2" FROM LONGITUDINAL PAVEMENT JOINTS.

NO.	DATE	BY	APP'D.
1	03/04/2005	JFF	BOG
2			
3			

corrected custom line style scaling

KANSAS DEPARTMENT OF TRANSPORTATION  
 TYPICAL PAVEMENT MARKING DETAILS FOR UNDIVIDED ROADWAYS  
 TE308  
 APP'D. Linda G. Yeas  
 4-29-03  
 DESIGN CK. LGV  
 DETAIL CK. GJM  
 QUANTITIES CK. GJM  
 TRACED

STATE	PROJECT NO.	YEAR	SHEET NO.	TOTAL SHEETS
KANSAS	87 N-0239-01	2004	27	47