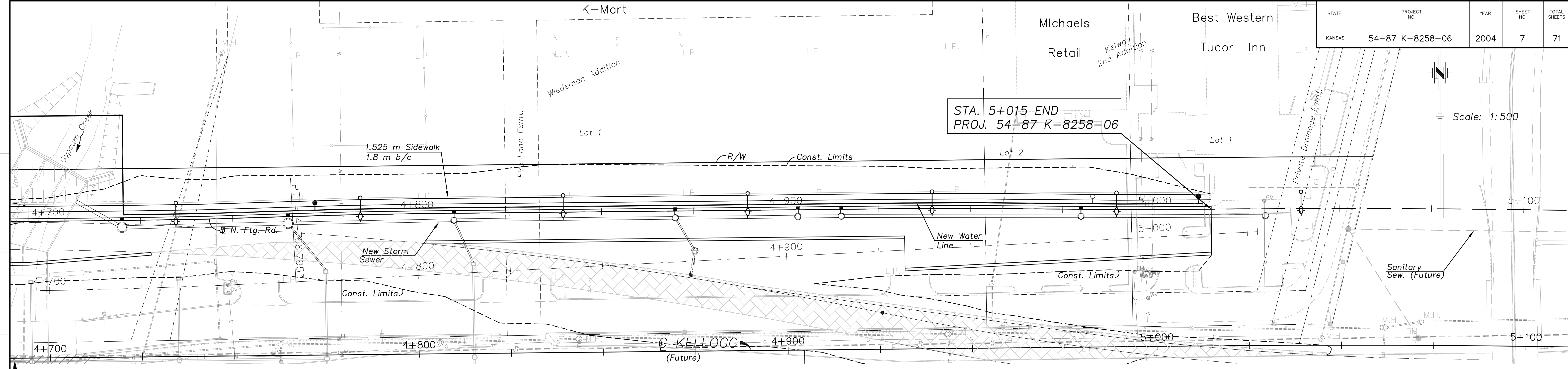


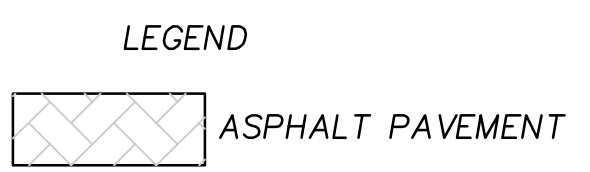
STATE	PROJECT NO.	YEAR	SHEET NO.	TOTAL SHEETS
KANSAS	54-87 K-8258-06	2004	7	71

BY	DATE
REFERENCE NOTED	
REFERENCE CHECKED	



STA. 5+015 END
PROJ. 54-87 K-8258-06

Scale: 1:500

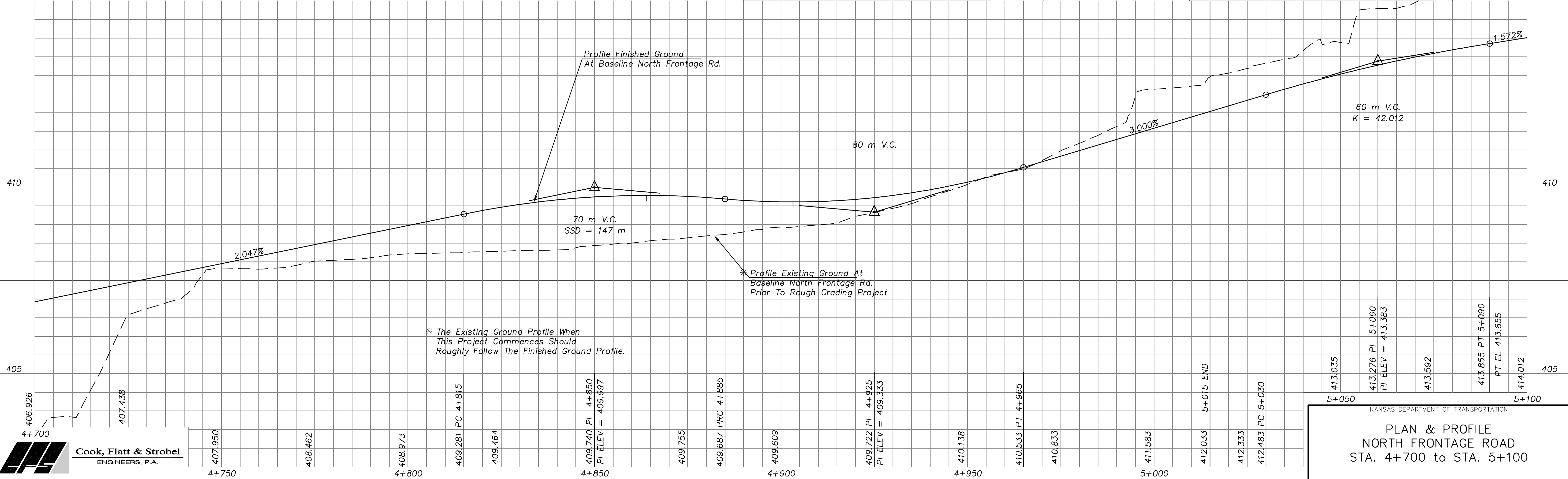


Sta. 4+689.738 Existing Bridge
No. 54-87-31.63 (706)
3 - 6.10 x 3.66 m RC Box Bridge

NOTE: Storm Sewer Data Is Shown
For Information Only. See Storm
Sewer Plan & Profile Sheets For
Flowlines.

BM #25 - "□" Cut Top Curb @ W. Curb Pt. of Cypress, 6.5 m
W. of Q Cypress & 29.0 m S. of Tangent Line of S. Frontage Rd.
74.8 m Rt. Q Sta. 4+897.947 Elev. = 408.648

BM #26 - "□" Cut Top C S. End of 1.2 m x 1.2 m Conc.
Inlet 0.4 m Above Ground, 6.5 m N. of b/c of N. Curb
Line of Kellogg, 30.0 m ± W. of KTA Br. Over Kellogg
3.8 m Lt. Q Sta. 5+066.861 Elev. = 414.160



KANSAS DEPARTMENT OF TRANSPORTATION
PLAN & PROFILE
NORTH FRONTAGE ROAD
STA. 4+700 to STA. 5+100