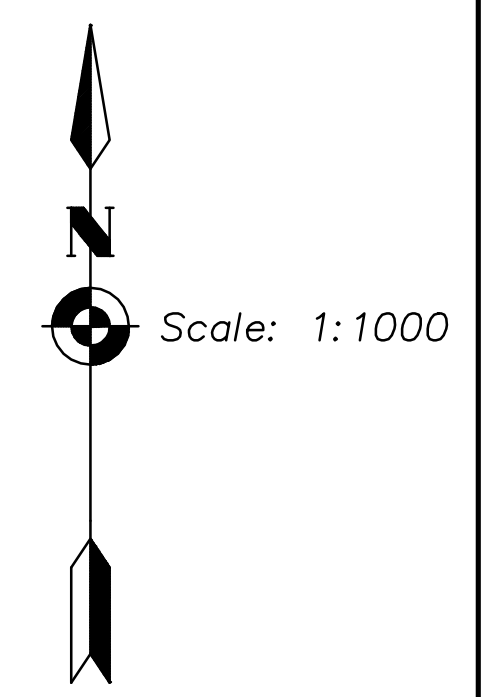


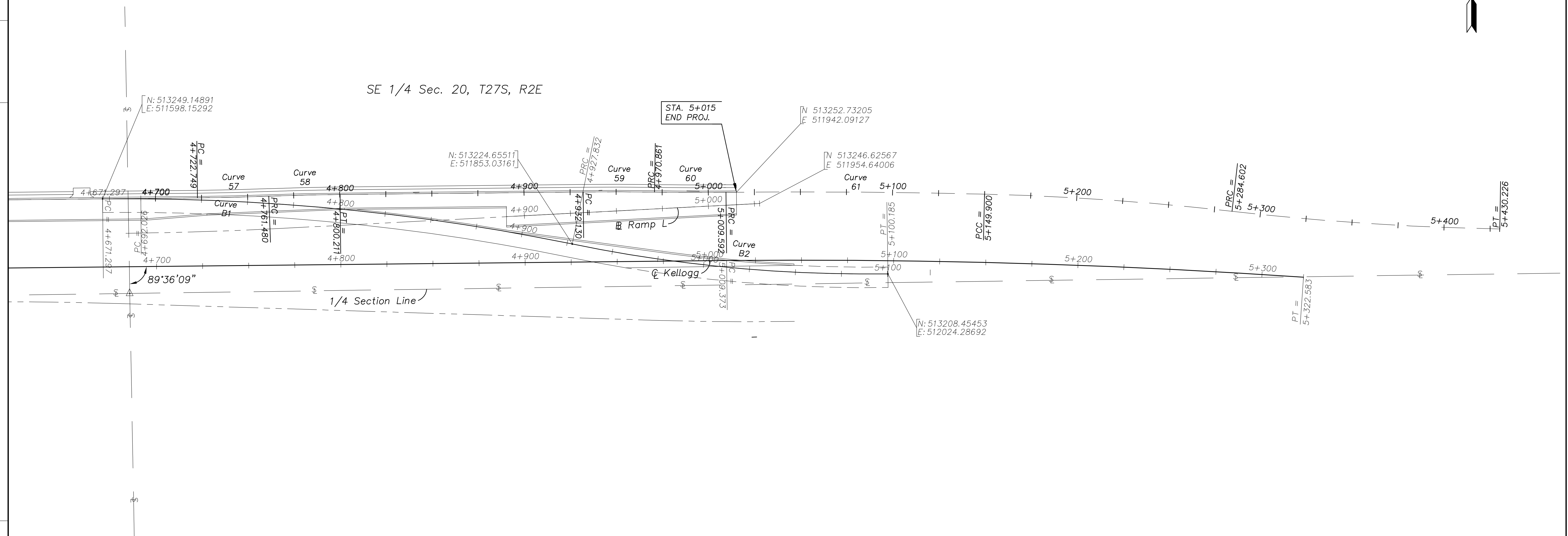
STATE	PROJECT NO.	YEAR	SHEET NO.	TOTAL SHEETS
KANSAS	54-87 K-8258-06	2004	12	71

CURVE DATA								
Curve No.	Curve Location	P.I. Sta. (Bk.)	Delta (DMS)	Radius (m)	Tangent (m)	Length (m)	External (m)	Super
57	North F.R.	4+742.116	01°28'46" Lt.	1 500.000	19.367	38.731	0.125	N.C.
58	North F.R.	4+780.846	01°28'46" Rt.	1 500.000	19.367	38.731	0.125	"
59	North F.R.	4+951.497	01°28'46" Rt.	1 500.000	19.367	38.731	0.125	"
60	North F.R.	4+990.228	01°28'46" Lt.	1 500.000	19.367	38.731	0.125	"
61	North F.R.	5+079.753	01°59'29" Rt.	4 037.000	70.161	140.308	0.610	"
60	Ramp L	4+725.159	02°23'09" Lt.	2 000.000	41.649	83.285	0.434	"



DATE	
BY	
REFERENCE NOTED	
REFERENCE CHECKED	

SE 1/4 Sec. 20, T27S, R2E



NE 1/4 Sec. 29, T27S, R2E

CURVE DATA - EX. US 54 TO NORTH FRONTAGE RD. SHOOFLY								
Curve No.	Curve Location	P.I. Sta. (Bk.)	Delta (DMS)	Radius (m)	Tangent (m)	Length (m)	External (m)	Super
B1	Shoofly	4+800.049	12°10'25" Rt.	1 207.400	128.752	256.535	6.845	N.C.
B2	Shoofly	5+014.344	12°20'38" Lt.	800.000	86.511	172.353	4.664	"

1/4 SECTION LINE

SCALE



KANSAS DEPARTMENT OF TRANSPORTATION
GEOMETRIC LAYOUT
 EAST KELLOGG (US-54)
 STA. 4+700 TO STA. 5+500
 Wichita, Kansas Sedgwick, Co.