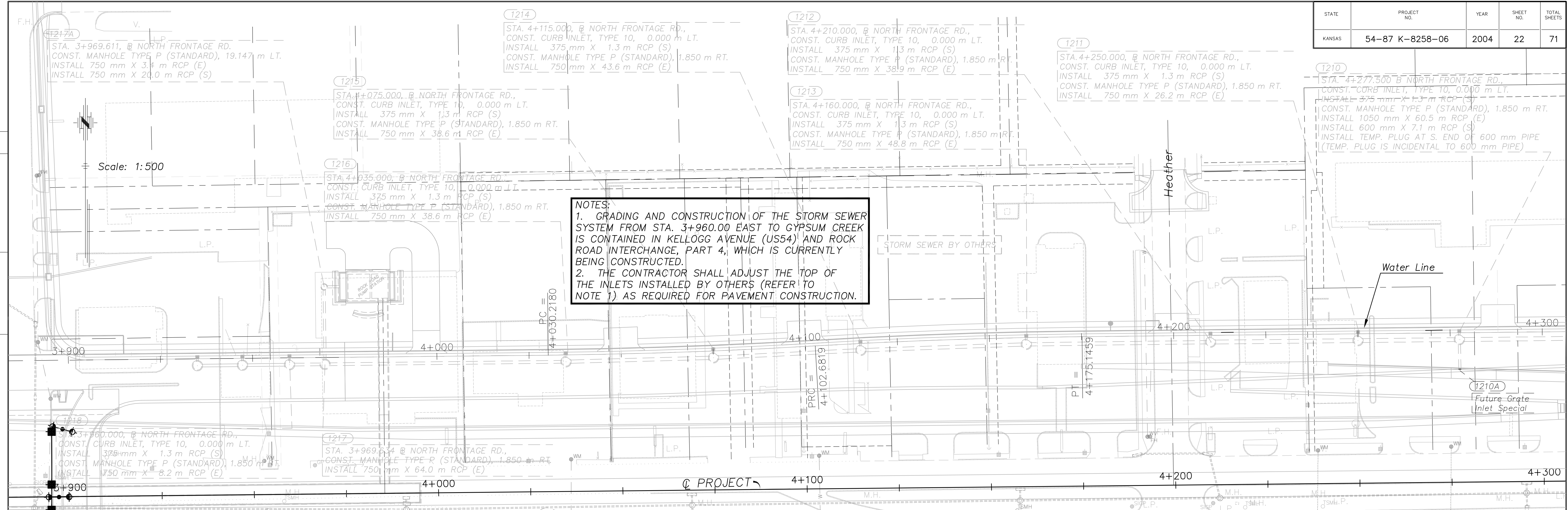


STATE	PROJECT NO.	YEAR	SHEET NO.	TOTAL SHEETS
KANSAS	54-87 K-8258-06	2004	22	71

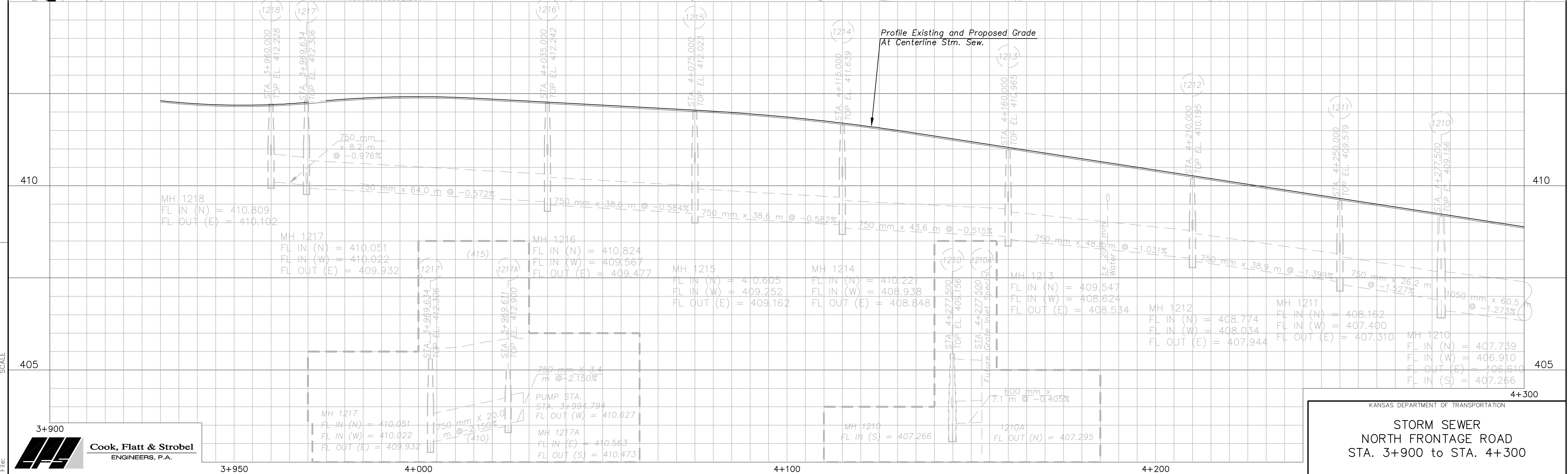
DATE	BY

REFERENCE NOTED	CHECKED



NOTES:
 1. GRADING AND CONSTRUCTION OF THE STORM SEWER SYSTEM FROM STA. 3+960.00 EAST TO GYPSUM CREEK IS CONTAINED IN KELLOGG AVENUE (US54) AND ROCK ROAD INTERCHANGE, PART 4, WHICH IS CURRENTLY BEING CONSTRUCTED.
 2. THE CONTRACTOR SHALL ADJUST THE TOP OF THE INLETS INSTALLED BY OTHERS (REFER TO NOTE 1) AS REQUIRED FOR PAVEMENT CONSTRUCTION.

Scale: 1:500



Drawn by:
 Plotted:
 File:

SCALE



KANSAS DEPARTMENT OF TRANSPORTATION
**STORM SEWER
 NORTH FRONTAGE ROAD
 STA. 3+900 to STA. 4+300**