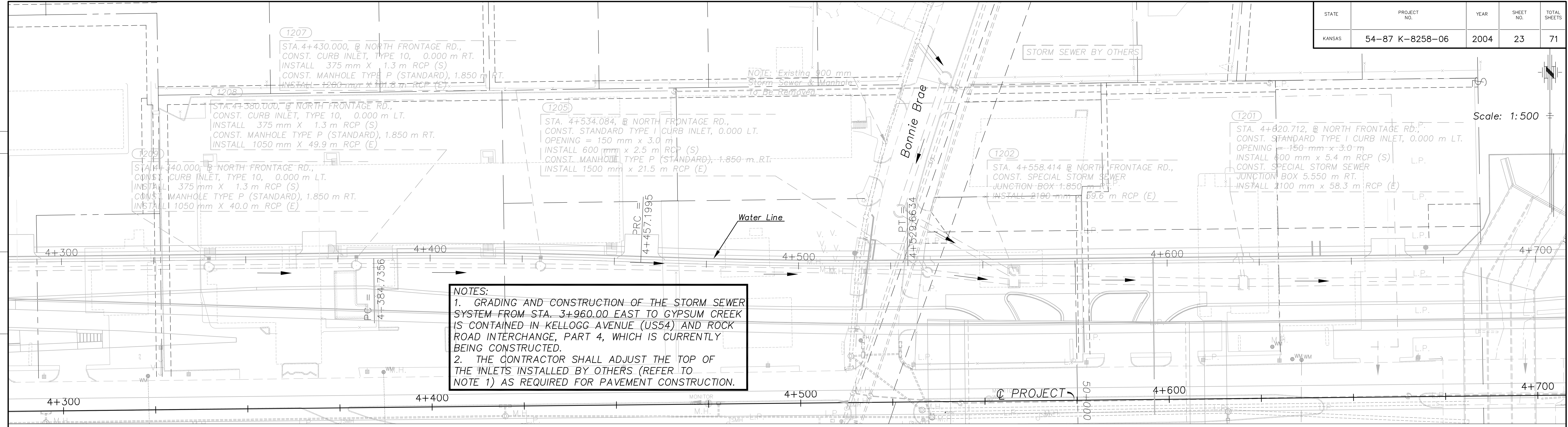


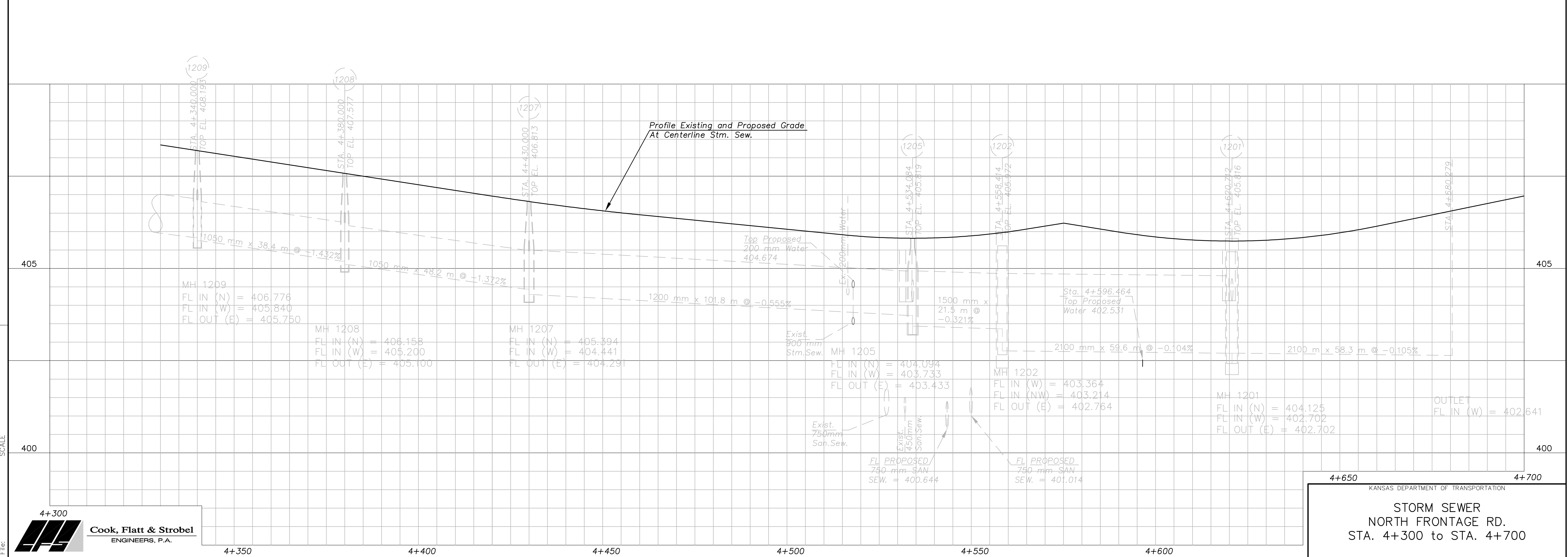
STATE	PROJECT NO.	YEAR	SHEET NO.	TOTAL SHEETS
KANSAS	54-87 K-8258-06	2004	23	71

DATE	BY

REFERENCE NOTED	CHECKED



NOTES:
 1. GRADING AND CONSTRUCTION OF THE STORM SEWER SYSTEM FROM STA. 3+960.00 EAST TO GYPSUM CREEK IS CONTAINED IN KELLOGG AVENUE (US54) AND ROCK ROAD INTERCHANGE, PART 4, WHICH IS CURRENTLY BEING CONSTRUCTED.
 2. THE CONTRACTOR SHALL ADJUST THE TOP OF THE INLETS INSTALLED BY OTHERS (REFER TO NOTE 1) AS REQUIRED FOR PAVEMENT CONSTRUCTION.



4+650 4+700
 KANSAS DEPARTMENT OF TRANSPORTATION
STORM SEWER
NORTH FRONTAGE RD.
STA. 4+300 to STA. 4+700

