

STORM WATER DRAINAGE PLANS #317

TO SERVE

MONARCH LANDING ADDITION

PROJECT NO. 468-84318

THE CITY OF WICHITA, KANSAS
JAMES L. ARMOUR, CITY ENGINEER

OCA #751442

GENERAL NOTES

- UNLESS SHOWN OR STATED OTHERWISE ON THESE DRAWINGS, MATERIALS AND CONSTRUCTION SHALL BE IN ACCORDANCE WITH CITY OF WICHITA STANDARD SPECIFICATIONS.
- THE TOPS OF INLETS AND MANHOLES AS NOTED ON THE PLANS MAY VARY SO AS TO MEET PROPOSED TOP OF CURB ELEVATIONS OR PAVEMENT ELEVATIONS. THE FIELD ENGINEER SHALL LOCATE INLETS AND MANHOLES WITH REFERENCE TO PROPOSED PAVING PLANS OF THE PERTINENT STREETS. THE CONTRACTOR SHALL BE RESPONSIBLE FOR PRESERVING PROPERTY IRONS.
- THE CONTRACTOR SHALL BE REQUIRED TO RE-ESTABLISH ANY PROPERTY IRONS WHICH ARE DAMAGED OR DESTROYED BY HIS CONSTRUCTION OPERATIONS. SUCH IRONS SHALL BE RE-ESTABLISHED BY A LICENSED LAND SURVEYOR IN ACCORDANCE WITH STATE LAWS. CONTRACTOR SHALL NOTIFY UTILITY COMPANIES OF CONSTRUCTION SCHEDULING.
- EXISTING UTILITIES AND THEIR LOCATIONS, AS SHOWN ON THE PLANS REPRESENT THE BEST INFORMATION OBTAINABLE FOR DESIGN. LOCATION INFORMATION HAS BEEN OBTAINED FROM THE VARIOUS COMPANIES AND IS EITHER FROM COMPANY UTILITY DRAWINGS OR COMPANY PROVIDED FIELD LOCATIONS. THE PLAN LOCATIONS SHOWN ARE NOT GUARANTEED. ADDITIONAL EXISTING UTILITIES MAY ALSO BE ENCOUNTERED.
- CONTRACTOR WILL BE REQUIRED TO PROVIDE A MINIMUM ADVANCE NOTICE OF FORTY EIGHT (48) HOURS TO UTILITY COMPANIES PRIOR TO STARTING ANY EXCAVATION AS FOLLOWS:

KANSAS ONE-CALL 687-2470

THE CONTRACTOR MUST NOTIFY THE FOLLOWING IN CASE OF EMERGENCY:

COX COMMUNICATIONS (CABLE)	262-0661
WESTAR ENERGY (ELECTRIC)	383-8600
SBC (TELEPHONE)	1-800-870-8390
CITY OF WICHITA WATER & SEWER	668-4504
AQUILA (GAS)	946-0016
KANSAS GAS SERVICE (GAS)	832-3101
KANEB PIPELINE	773-9000

6. RUBBLE FROM THE REMOVAL OF MISCELLANEOUS STRUCTURES AND EXCESS EXCAVATION WHICH IS TO BE WASTED SHALL BE DISPOSED OF ON SITES TO BE PROVIDED BY THE CONTRACTOR. THESE SITES SHALL BE APPROVED BY THE ENGINEER AS TO SUITABILITY, APPEARANCE AND SITE LOCATION. LOCATIONS THAT, IN THE OPINION OF THE ENGINEER, WILL LEAVE AN UNSIGHTLY APPEARANCE WILL NOT BE APPROVED. ALL DISPOSAL SITES MUST BE APPROVED BY THE KANSAS DEPARTMENT OF HEALTH AND ENVIRONMENT. MATERIAL EITHER STOCKPILED OR DISPOSED OF IN A FLOOD PLAIN WOULD REQUIRE A KANSAS STATE BOARD OF AGRICULTURE PERMIT. ANY MATERIAL DUMPED IN WATERS OF THE UNITED STATES OR WETLANDS IS SUBJECT TO U.S. CORPS OF ENGINEERS PERMITTING REGULATIONS. ANY MATERIAL BURIED OR STOCKPILED BEYOND APPROVED CONSTRUCTION LIMITS WOULD REQUIRE ADDITIONAL ARCHAEOLOGICAL INVESTIGATIONS UNLESS BURIED IN A PREVIOUSLY APPROVED BORROW LOCATION.

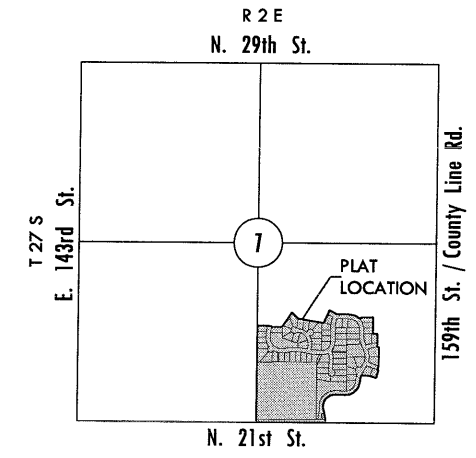
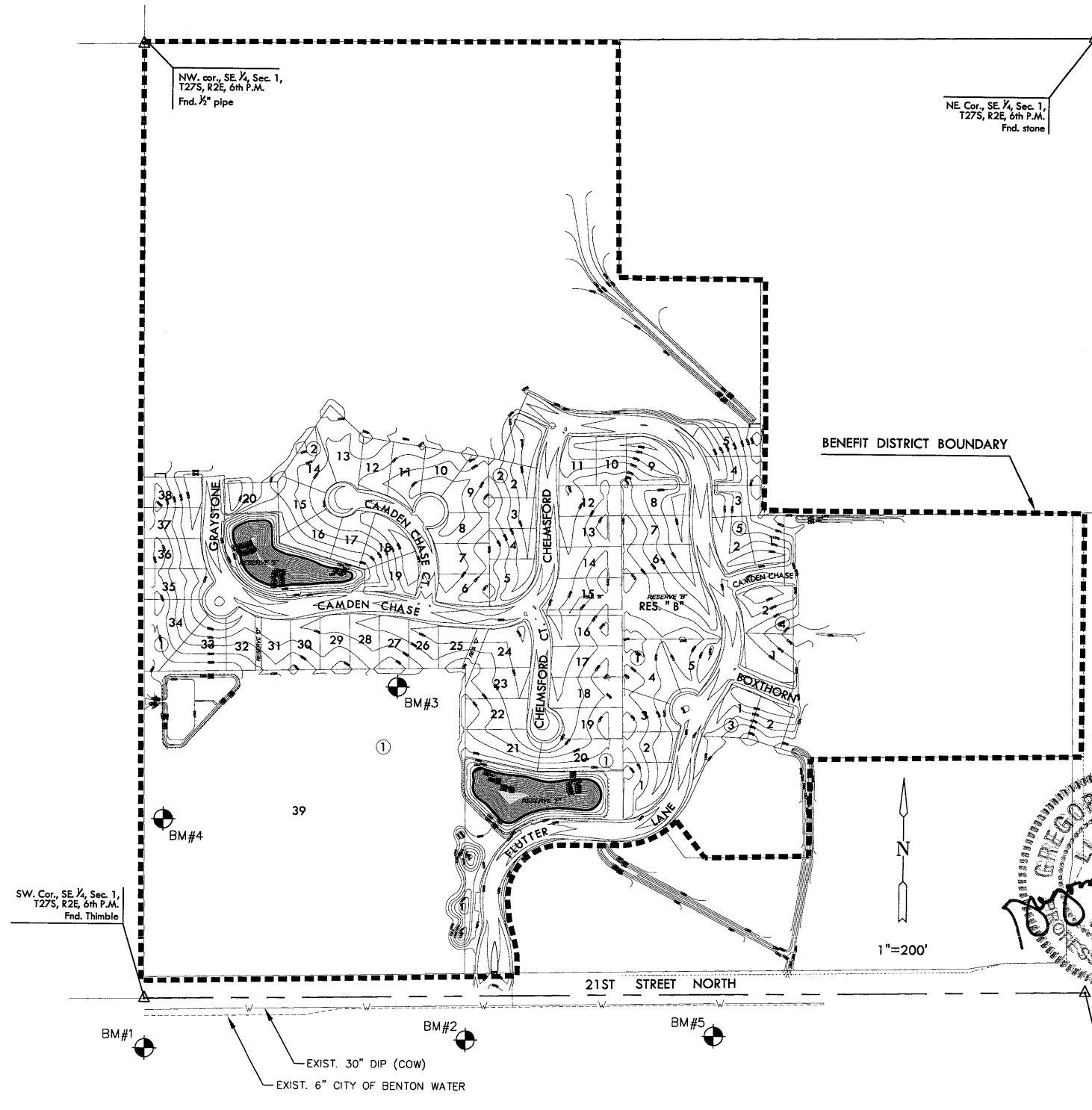
7. ALL COMPACTION OF EARTHWORK SHALL BE 95% STANDARD DENSITY.

8. OTHER CONSTRUCTION MAY BE UNDER WAY SIMULTANEOUSLY WITH THIS PROJECT. THE CONTRACTOR SHALL COORDINATE WITH ANY CONTRACTORS CONSTRUCTING OTHER PORTIONS OF THE PROJECT.

9. EXCESS EXCAVATION SHALL BE STOCKPILED ON-SITE IN A LOCATION APPROVED BY THE FIELD ENGINEER.

10. STORE MATERIAL BACK FOR CLAY LINER IN PONDS (SEE TYPICAL LAKE DETAIL, SHEET 2). CONTRACTOR SHALL WORK WITH THE CITY OR REPRESENTATIVE/INSPECTOR TO SELECT DESIRED MATERIAL.

11. EXISTING WATER WELLS MAY BE ENCOUNTERED. WHEN SUCH WELLS ARE DISCOVERED PLUG PER STATE REGULATION STANDARDS. COST SUBSIDIARY TO SITE CLEARING AND RESTORATION.



VICINITY MAP

INDEX TO DRAWINGS

SHEET NO.	DESCRIPTION
1	TITLE SHEET
2	TREE PROTECTION/ GRADING DETAILS
3-6	GRADING PLAN
7	WEIR STRUCTURE DETAILS
8	EROSION CONTROL/ SEEDING DETAILS
9	BUBBLE MAP
10-14	BMP DETAILS
15-16	PLAT

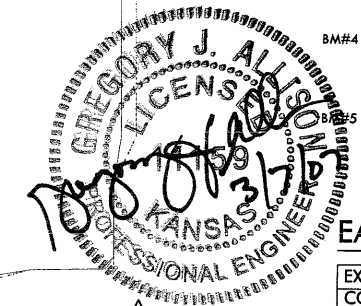
BENCHMARKS

- BM#1 Railroad spike in north side of power pole, 48' south of the South Quarter corner of Sec. 1, T27S, R2E. Elev. = 1364.78 NGVD 29
- BM#2 Railroad spike in north side of power pole, 92' east and 50' south of the South Quarter corner of Sec. 1, T27S, R2E. Elev. = 1372.64 NGVD 29
- BM#3 Top of fence T-post 6" below ground, 206' West and 21' South of the northeast corner of the Lot 39, Blk. 1, 702' east and 889' north of the South Quarter of Sec. 1, T27S, R2E. Elev. = 1371.15 NGVD 29
- BM#4 Top of fence T-post 6" below ground, 436' south and 85' east of the northwest corner of the school site, 473' north and 85' east of the South Quarter corner of Sec. 1, T27S, R2E. Elev. = 1367.80 NGVD 29
- BM#5 Railroad spike in north side of power pole, 1040' west and 51' south of the southeast corner of Section 1, Township 27 South, Range 2 East. Elev. = 1368.50 NGVD 29

EARTHWORK TABULATIONS:

EXCAVATION	49,700 CY
COMPACTED FILL(95% DENSITY)	48,900 CY
CONTRACTOR FURNISHED	6,500 CY

NOTE: 15% HAS BEEN ADDED TO EXCAVATION QUANTITIES TO ALLOW FOR COMPACTION AND HANDLING.



MKEC
ENGINEERING
CONSULTANTS, INC.
411 N. WEBB ROAD
WICHITA, K.S. 67206
316-684-9600

GRADING PLAN
MONARCH LANDING ADDITION
PHASE 1

TITLE SHEET
SHEET TITLE
468-84319
PROJECT NUMBER

MLP / MLP / GJA
DESIGNED / DRAWN / CHECKED

ISSUED
March 07
REVISED

SHEET NO.
1 of 16