

GRADING PLANS
MONARCH LANDING ADDITION
PHASE 1

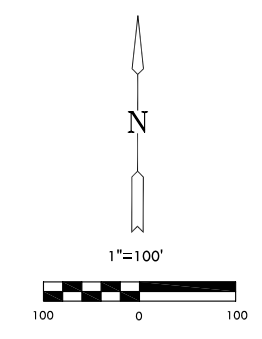
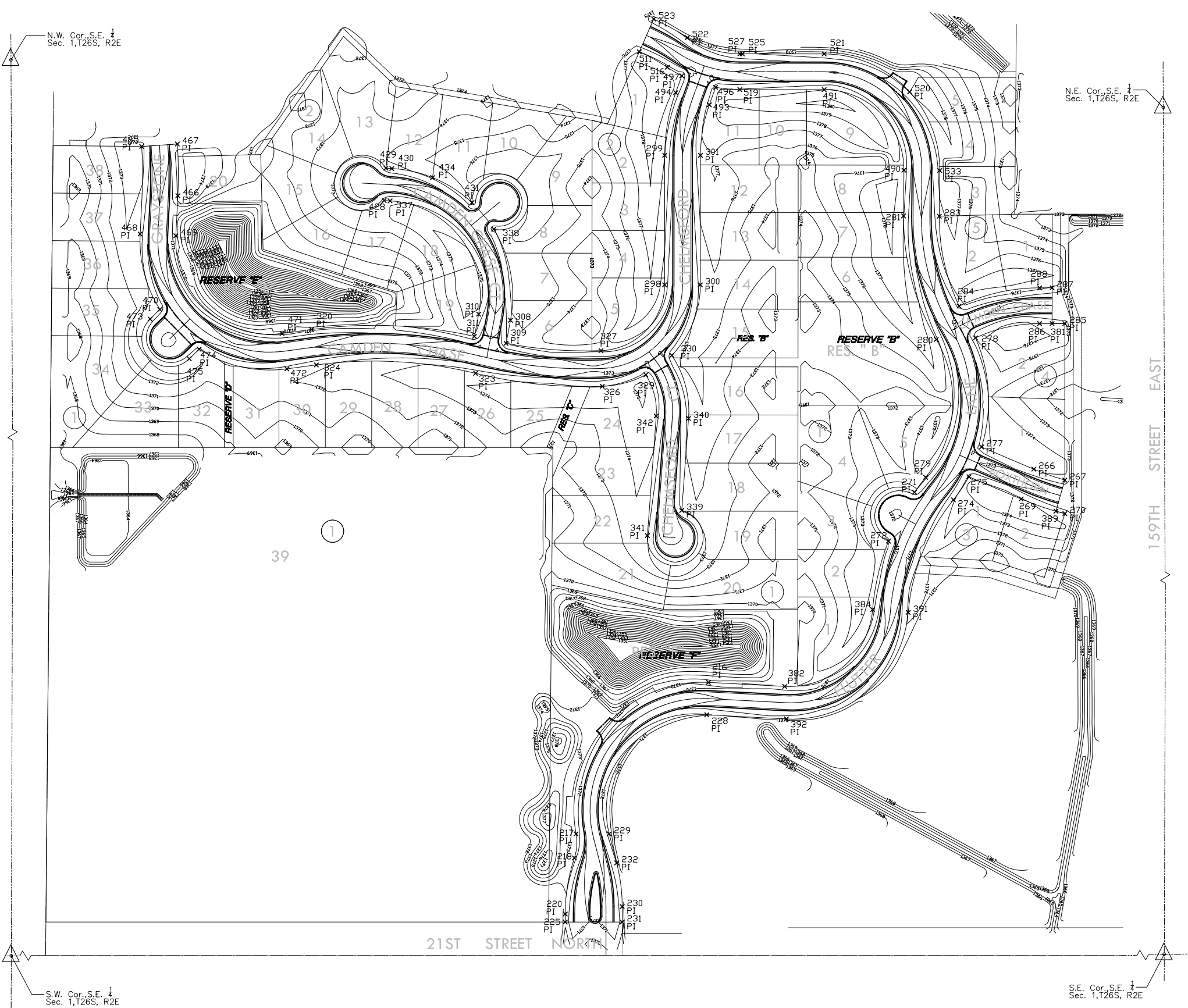
BUBBLE MAP
SHEET TITLE
468-84318
PROJECT NUMBER

DFL
DESIGN BY
DMU, KKL
DRAWN BY
GJA
CHECKED BY

ISSUED
March 07
REVISED

SHEET NO.
9 of 16

PLAT IRONS			
Point #	Northing	Easting	Desc.
216	1700551.79	1700644.83	PI
217	1700276.19	1700412.95	PI
218	1700232.99	1700410.78	PI
220	1700132.38	1700396.24	PI
225	1700117.94	1700396.51	PI
228	1700493.82	1700642.88	PI
229	1700277.34	1700472.32	PI
230	1700147.60	1700497.97	PI
231	1700119.85	1700498.49	PI
232	1700225.52	1700486.65	PI
266	1700944.58	1701220.09	PI
267	1700926.07	1701275.85	PI
269	1700890.78	1701198.42	PI
270	1700866.01	1701277.17	PI
271	1700899.30	1701007.32	PI
272	1700810.85	1700962.35	PI
274	1700886.93	1701077.21	PI
275	1700928.70	1701104.23	PI
277	1700982.51	1701125.90	PI
278	1701177.60	1701111.35	PI
279	1700926.30	1701026.75	PI
280	1701173.57	1701041.18	PI
281	1701393.55	1700978.41	PI
283	1701394.19	1701042.40	PI
284	1701233.94	1701080.91	PI
285	1701206.23	1701270.72	PI
286	1701205.42	1701225.55	PI
287	1701269.31	1701246.75	PI
288	1701269.41	1701224.41	PI
298	1701262.17	1700553.01	PI
299	1701494.06	1700548.87	PI
300	1701263.31	1700617.00	PI
301	1701495.20	1700612.86	PI
308	1701193.56	1700278.33	PI
309	1701152.04	1700271.17	PI
310	1701203.41	1700221.17	PI
311	1701163.55	1700214.30	PI
320	1701205.42	1699922.58	PI
323	1701097.39	1700217.87	PI
324	1701107.14	1699932.32	PI
326	1701078.32	1700444.78	PI
327	1701142.23	1700441.35	PI
329	1701100.44	1700522.46	PI
330	1701136.13	1700568.32	PI
337	1701403.33	1700058.74	PI
338	1701356.14	1700245.37	PI
339	1700858.74	1700591.27	PI
340	1701023.76	1700600.34	PI
341	1701081.24	1700530.85	PI
342	1701026.94	1700542.42	PI
381	1701205.82	1701247.89	PI
382	1700547.19	1700781.48	PI
384	1700687.69	1700936.22	PI
389	1700869.99	1701261.06	PI
391	1700683.79	1701000.10	PI
392	1700489.02	1700785.53	PI
428	1701403.71	1700048.15	PI
429	1701461.67	1700050.21	PI
430	1701461.29	1700060.81	PI
431	1701403.01	1700205.45	PI
434	1701446.47	1700134.09	PI
465	1701492.35	1699612.34	PI
466	1701405.42	1699678.70	PI
467	1701497.94	1699676.09	PI
468	1701335.52	1699612.51	PI
469	1701333.54	1699676.48	PI
470	1701201.22	1699650.32	PI
471	1701162.29	1699669.97	PI
472	1701099.04	1699879.71	PI
473	1701183.58	1699633.19	PI
474	1701131.34	1699721.86	PI
475	1701113.80	1699704.72	PI
490	1701475.44	1700977.59	PI
491	1701616.99	1700832.04	PI
493	1701586.00	1700626.99	PI
494	1701606.54	1700566.38	PI
496	1701617.61	1700637.70	PI
497	1701637.05	1700576.72	PI
511	1701678.55	1700499.88	PI
516	1701651.78	1700550.49	PI
519	1701614.30	1700681.13	PI
520	1701616.01	1700985.21	PI
521	1701680.98	1700830.90	PI
522	1701705.43	1700585.38	PI
523	1701737.59	1700524.60	PI
525	1701678.37	1700684.43	PI
527	1701678.29	1700679.99	PI
533	1701476.09	1701041.58	PI



PLOTED: Wednesday, March 07, 2007 @ 10:22AM

J:\CIVIL\06201\DWG\GRAD\PH1\BUBBLE.DWG