

FHWA REGION NO.	STATE	PROJECT NUMBER	FISCAL YEAR	SHEET NUMBER	TOTAL SHEETS
7	KANSAS	87N-0385-01	2006	12	43

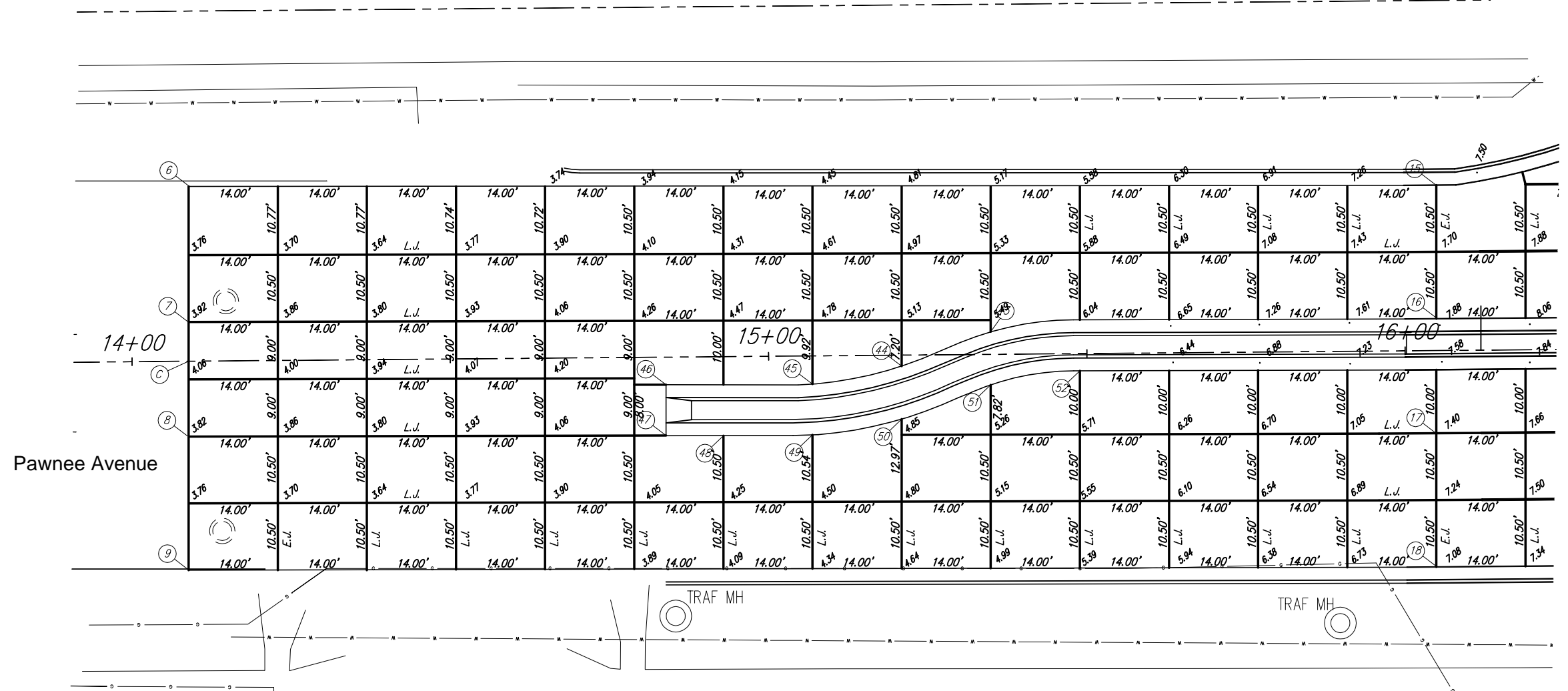


SCALE 1" = 10'

NOTE:  
 THE SOUTH LEG OF MCLEAN INTERSECTS PAWNEE AT:  
 STA 17+26.47(PAWNEE) = STA 30+00.00(MCLEAN)  
 THE NORTH LEG OF MCLEAN INTERSECTS PAWNEE AT:  
 STA 17+40.47(PAWNEE) = STA 39+93.36(MCLEAN)

### HORIZONTAL CONTROL

LOCATION	NORTHING	EASTING
1	N 20,144.49	E 21,388.74
2	N 20,134.38	E 21,370.34
3	N 20,130.53	E 21,363.32
4	N 20,120.67	E 21,345.36
5	N 20,115.61	E 21,336.15
6	N 20,036.86	E 21,101.40
7	N 20,015.55	E 21,101.40
8	N 19,997.55	E 21,101.40
9	N 19,976.55	E 21,101.40
10	N 19,860.68	E 21,491.33
11	N 19,872.44	E 21,508.68
12	N 19,876.93	E 21,515.30
13	N 19,882.82	E 21,523.99
14	N 19,894.32	E 21,540.95
15	N 20,037.07	E 21,297.30
16	N 20,016.06	E 21,297.30
17	N 19,998.06	E 21,297.30
18	N 19,977.06	E 21,297.30
19	N 20,072.11	E 21,372.02
20	N 19,930.19	E 21,444.17
21	N 19,941.81	E 21,461.94
22	N 19,941.65	E 21,484.12
23	N 19,941.38	E 21,521.77
24	N 19,956.06	E 21,427.83
25	N 19,955.72	E 21,474.78
26	N 19,955.54	E 21,499.52
27	N 20,058.40	E 21,366.94
28	N 20,056.88	E 21,412.77
29	N 20,056.04	E 21,437.92
30	N 20,037.79	E 21,353.92
31	N 20,016.81	E 21,367.39
32	N 19,988.36	E 21,385.66
33	N 20,037.08	E 21,478.95
34	N 20,017.18	E 21,489.52
35	N 19,988.72	E 21,504.62
36	N 20,016.88	E 21,391.64
37	N 20,017.02	E 21,437.21
38	N 20,017.09	E 21,461.79
39	N 20,007.28	E 21,519.33
40	N 19,999.28	E 21,519.39
41	N 20,016.47	E 21,348.93
42	N 20,008.50	E 21,348.97
43	N 20,014.01	E 21,227.30
44	N 20,008.63	E 21,213.30
45	N 20,005.80	E 21,199.30
46	N 20,005.70	E 21,176.30
47	N 19,997.69	E 21,176.30
48	N 19,997.70	E 21,185.30
49	N 19,997.83	E 21,199.30
50	N 20,000.29	E 21,213.30
51	N 20,005.68	E 21,227.30
52	N 20,007.90	E 21,241.30



### CENTERLINE CONTROL

LOCATION	NORTHING	EASTING
A*	N 20,000.00	E 20,000.00
B*	N 20,009.39	E 21,101.30
C	N 20,009.39	E 21,101.30
D	N 20,012.72	E 21,491.88
E	N 20,012.10	E 21,418.86
F	N 19,874.69	E 21,511.99
G	N 20,012.22	E 21,432.86
H	N 20,132.46	E 21,366.83
I	N 19,956.53	E 21,113.11
J	N 19,973.71	E 21,578.23

A\* - SM @ Seneca & Pawnee, 1/2" Iron Pipe Thimble  
 B\* - 1/2" Rebar @ Seneca & Pawnee, 14.26' NE of LP  
 C - 51.41' SE of TSP  
 I\* - SW Cor. Osage & Pawnee, 1/2" Iron Pipe 14.48' West of Curb  
 J\* - COW Disc on South Rail of Bridge

### Pawnee and McLean Improvements Concrete Paving Plan

**Ruggles & Bohm, P.A.**  
 Engineering, Surveying, Land Planning

924 North Main  
 Wichita, Kansas 67203  
 www.rbkansas.com

(316) 264-8008  
 (316) 264-4621 fax  
 E-mail: info@rbkansas.com

DESIGN: PDC  
 DRAWN: PDC  
 REVIEW: 6/25/06  
 UTILITY

DATE: July 20, 2005

SHEET: 12 OF 43