

FHWA REGION NO.	STATE	PROJECT NUMBER	FISCAL YEAR	SHEET NO.	TOTAL SHEETS
7	KANSAS	87N-0385-01	2006	24	43

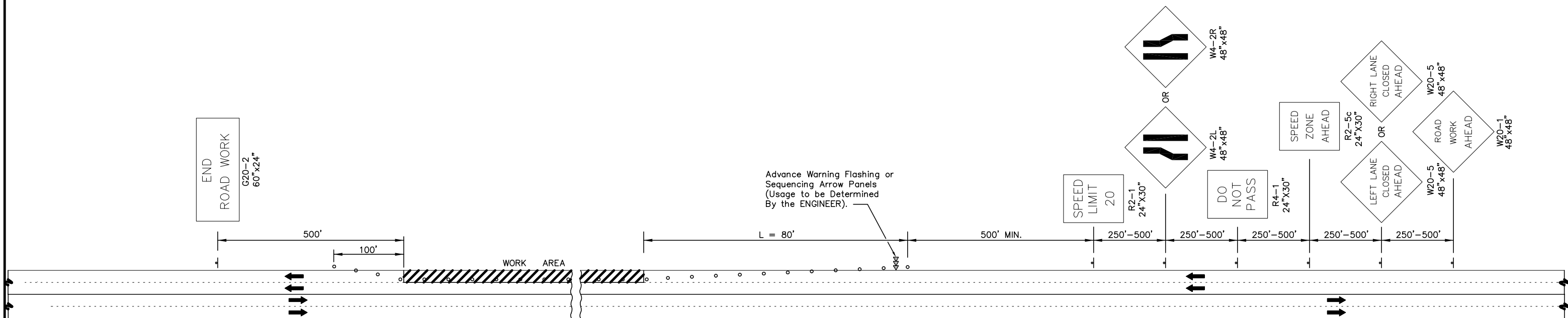
- ⊙ Distance To Be Determined By The ENGINEER.
- Channelization devices.
- ⚡ Advance Warning Flashing Or Sequencing Arrow Panel

TAPER FORMULA'S

$L = S \times W$ FOR SPEEDS OF 45 M.P.H. OR MORE

$L = \frac{WS^2}{60}$ FOR SPEEDS OF 40 M.P.H. OR LESS

WHERE: L = MINIMUM LENGTH OF TAPER
 S = NUMERICAL VALUE OF POSTED SPEED PRIOR TO WORK
 W = WIDTH OF OFFSET



Advance Warning Flashing or Sequencing Arrow Panels (Usage to be Determined By the ENGINEER).

TRAFFIC CONTROL PLAN FOR HANDLING TRAFFIC THROUGH CONSTRUCTION ON A FOUR-LANE DIVIDED ROADWAY ONE LANE CLOSED

TRAFFIC CONTROL PLAN FOR CLOSURE OF THE OUTSIDE LANE ON A FIVE-LANE UNDIVIDED ROADWAY

	Ruggles & Bohm, P.A. Engineering, Surveying, Land Planning		DESIGN PDC	SHEET 24 OF 43
	924 North Main (316) 264-8008 Wichita, Kansas 67203 (316) 264-4621 fax www.rbkansas.com E-mail: info@rbkansas.com		REVIEW UTILITY	
DRAWING FILE Traffic Control		PROJECT NUMBER 87N-0385-01	DATE 4/4/06	