

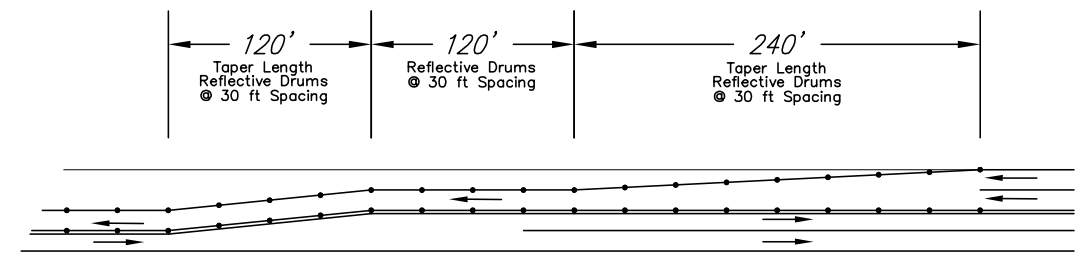
FHWA REGION NO.	STATE	PROJECT NUMBER	FISCAL YEAR	SHEET NUMBER	TOTAL SHEETS
7	KANSAS	87N-0385-01	2006	27	43

Major construction activities completed.

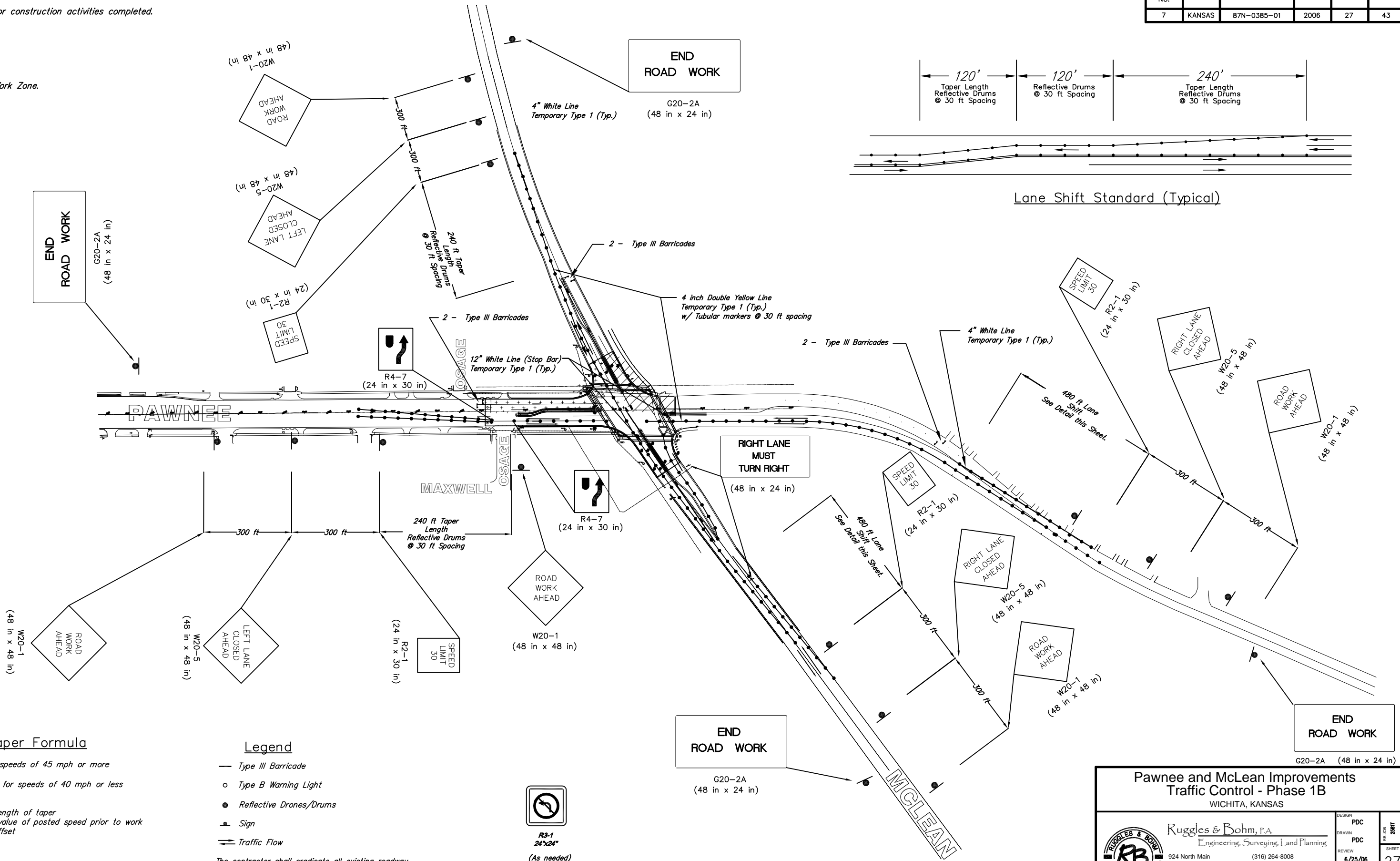
Work Zone.



SCALE 1" = 20'  
IRON = •



Lane Shift Standard (Typical)



**Taper Formula**

$L = W * S$  for speeds of 45 mph or more  
 $L = (WS^2)/60$  for speeds of 40 mph or less  
 Where:  
 L = minimum length of taper  
 S = numerical value of posted speed prior to work  
 W = width of offset

**Legend**

- Type III Barricade
- Type B Warning Light
- Reflective Drones/Drums
- ▲ Sign
- Traffic Flow



R3-1  
24x24"

(As needed)  
 If possible shall be mounted overhead, but if not, then place on far left corners facing approaching traffic.

The contractor shall eradicate all existing roadway markings that are in conflict with this plan and reinstall upon project completion. The cost of this work shall be subsidiary to other items of work.

**Pawnee and McLean Improvements  
Traffic Control - Phase 1B**  
WICHITA, KANSAS

**Ruggles & Bohm, P.A.**  
Engineering, Surveying, Land Planning  
924 North Main  
Wichita, Kansas 67203  
www.rbkansas.com

(316) 264-8008  
(316) 264-4621 fax  
E-mail: info@rbkansas.com

DRAWING FILE Traffic Control	PROJECT NUMBER 472-84007	DATE 10/22/05	DESIGN PDC DRAWN PDC REVIEW 6/25/06 UTILITY SHEET 27 OF 43
---------------------------------	-----------------------------	------------------	--