

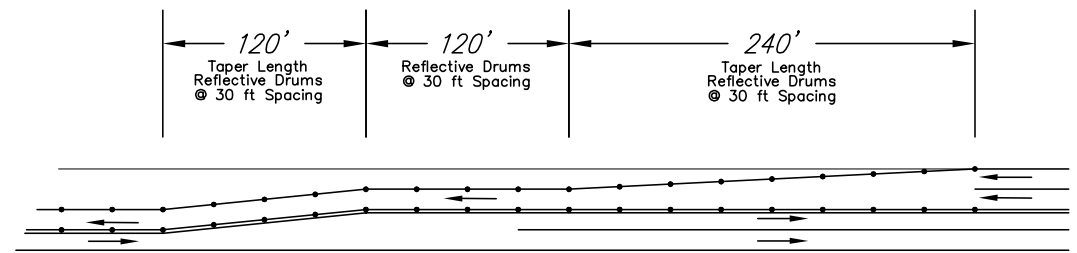
FHWA REGION NO.	STATE	PROJECT NUMBER	FISCAL YEAR	SHEET NUMBER	TOTAL SHEETS
7	KANSAS	87N-0385-01	2006	28	43

Major construction activities completed.

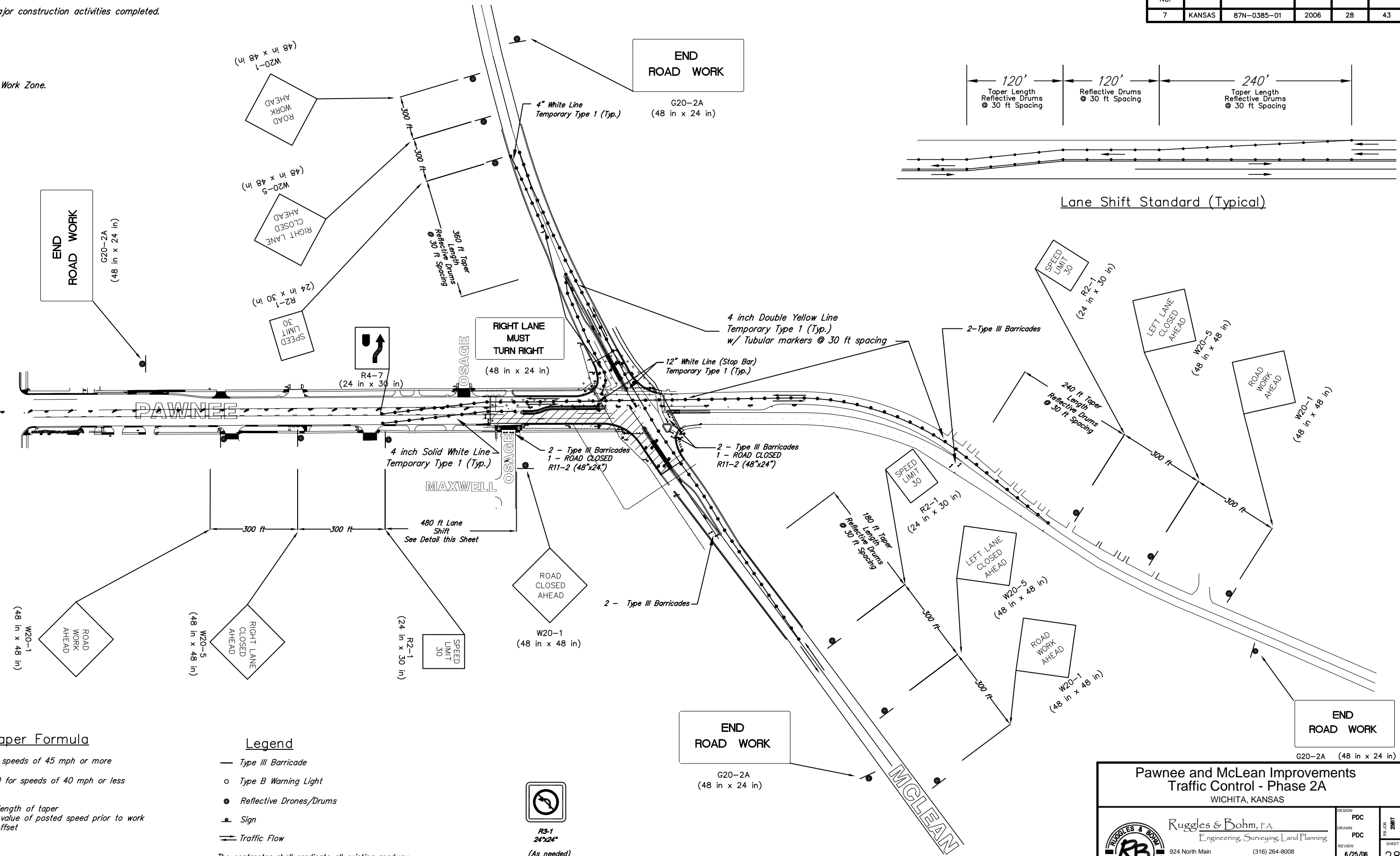
Work Zone.



SCALE 1" = 20'  
IRON = ●



Lane Shift Standard (Typical)



Taper Formula

$L = W * S$  for speeds of 45 mph or more  
 $L = (WS^2)/60$  for speeds of 40 mph or less  
 Where:  
 L = minimum length of taper  
 S = numerical value of posted speed prior to work  
 W = width of offset

Legend

- Type III Barricade
- Type B Warning Light
- Reflective Drones/Drums
- Sign
- Traffic Flow



R3-1  
24"x24"  
(As needed)

The contractor shall eradicate all existing roadway markings that are in conflict with this plan and reinstall upon project completion. The cost of this work shall be subsidiary to other items of work.

If possible shall be mounted overhead, but if not, then place on far left corners facing approaching traffic.

**Pawnee and McLean Improvements  
Traffic Control - Phase 2A**  
WICHITA, KANSAS

 <b>Ruggles &amp; Bohm, P.A.</b> Engineering, Surveying, Land Planning 924 North Main Wichita, Kansas 67203 www.rbkansas.com (316) 264-8008 (316) 264-4621 fax E-mail: info@rbkansas.com	DESIGN: PDC DRAWN: PDC REVIEW: 6/25/06 UTILITY:	SHEET <b>28</b> OF <b>43</b>
	DRAWING FILE: Traffic Control PROJECT NUMBER: 472-84007 DATE: Oct. 25, 2005	