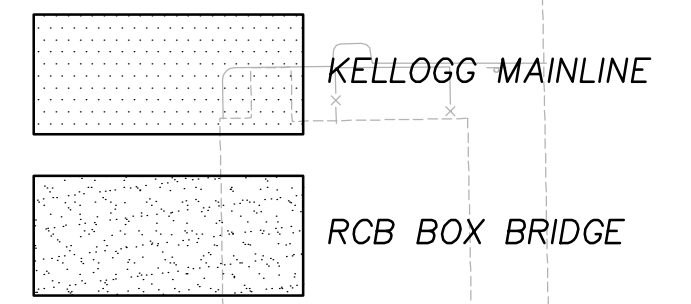


STATE	PROJECT NO.	YEAR	SHEET NO.	TOTAL SHEETS
KANSAS	54-87 K-8258-02	2003	5	76

NOTE:
 SEE SH. FOR LIMITS OF MAINLINE MILL AND RESURFACE BOTH EAST AND WEST MAINLINE RECONSTRUCTION.
 SEE SH. FOR LIMITS OF CURB AND GUTTER REPLACEMENT.

LEGEND

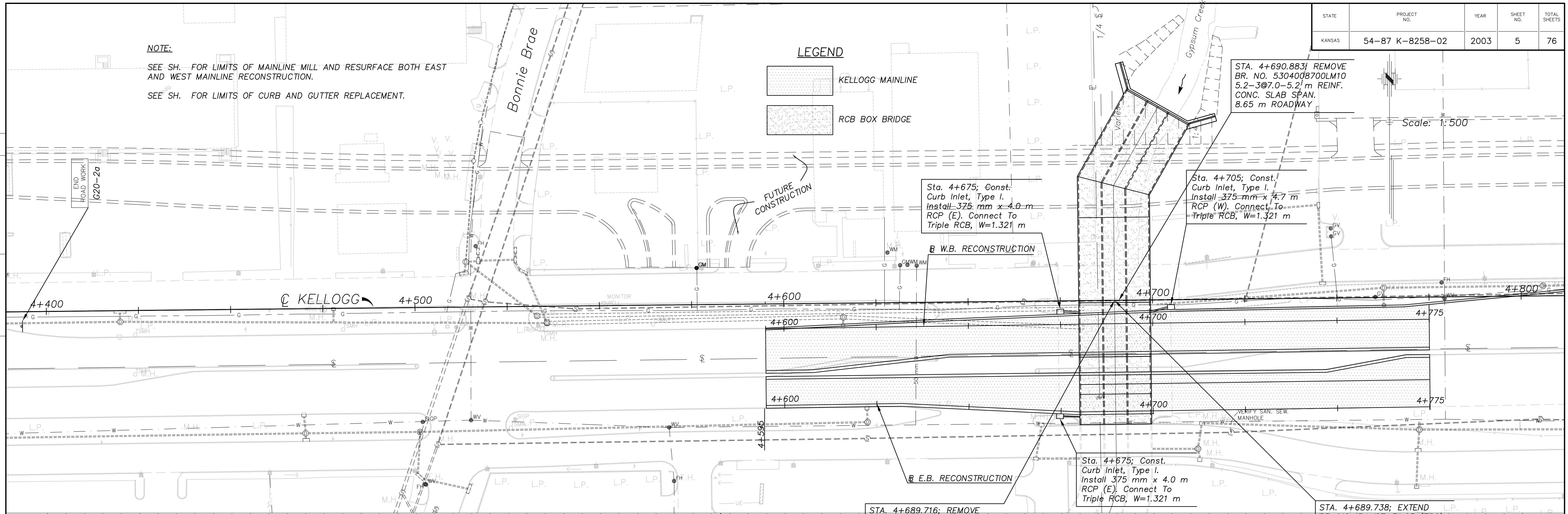


STA. 4+690.883/ REMOVE
 BR. NO. 5304008700LM10
 5.2-3@7.0-5.2 m REINF.
 CONC. SLAB SPAN.
 8.65 m ROADWAY

Scale: 1:500

DATE	BY

REFERENCE NOTED	REFERENCE CHECKED

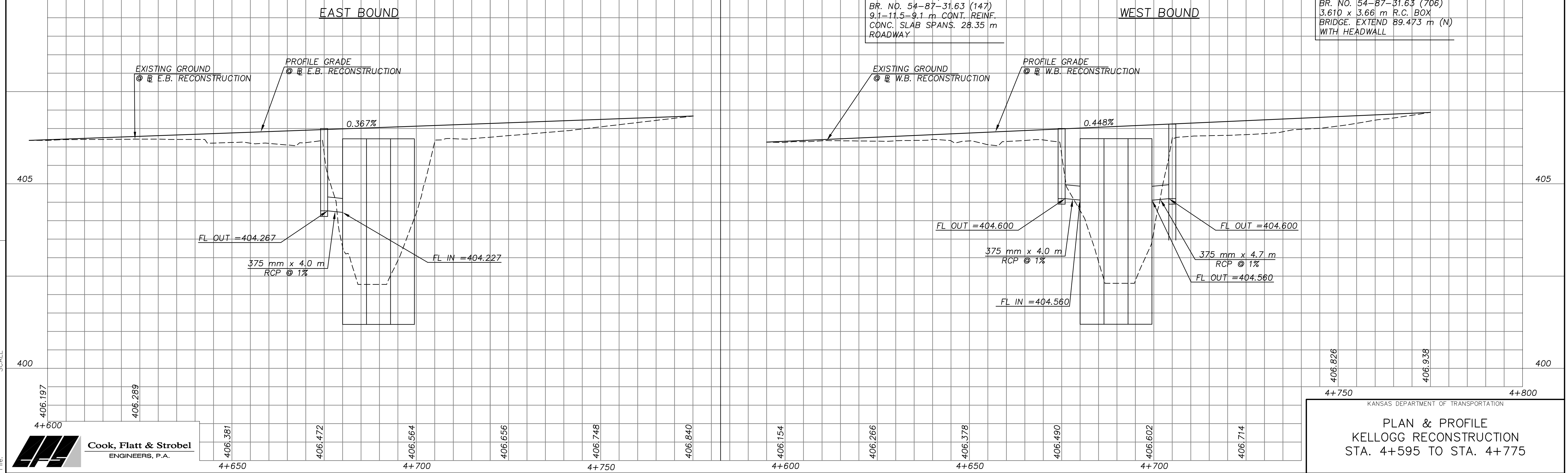


EAST BOUND

WEST BOUND

STA. 4+689.716; REMOVE
 BR. NO. 54-87-31.63 (147)
 9.1-11.5-9.1 m CONT. REINF.
 CONC. SLAB SPANS. 28.35 m
 ROADWAY

STA. 4+689.738; EXTEND
 BR. NO. 54-87-31.63 (706)
 3.610 x 3.66 m R.C. BOX
 BRIDGE. EXTEND 89.473 m (N)
 WITH HEADWALL



Station	Elevation
4+750	406.826
4+800	406.938

KANSAS DEPARTMENT OF TRANSPORTATION
PLAN & PROFILE
KELLOGG RECONSTRUCTION
 STA. 4+595 TO STA. 4+775

Drawn by: Cook, Flatt & Strobel
 ENGINEERS, P.A.