

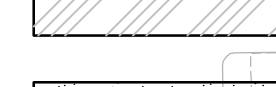


STATE	PROJECT NO.	YEAR	SHEET NO.	TOTAL SHEETS
KANSAS	54-87 K-8258-02	2003	6	76

NOTE:  
 SEE SH. FOR LIMITS OF NORTH FRONTAGE ROAD  
 MILL AND RESURFACING BOTH EAST AND WEST OF  
 NORTH FRONTAGE ROAD RECONSTRUCTION SHOWN  
 ON THIS SHEET.  
 SEE SH. FOR LIMITS OF CURB AND GUTTER REPLACEMENT.

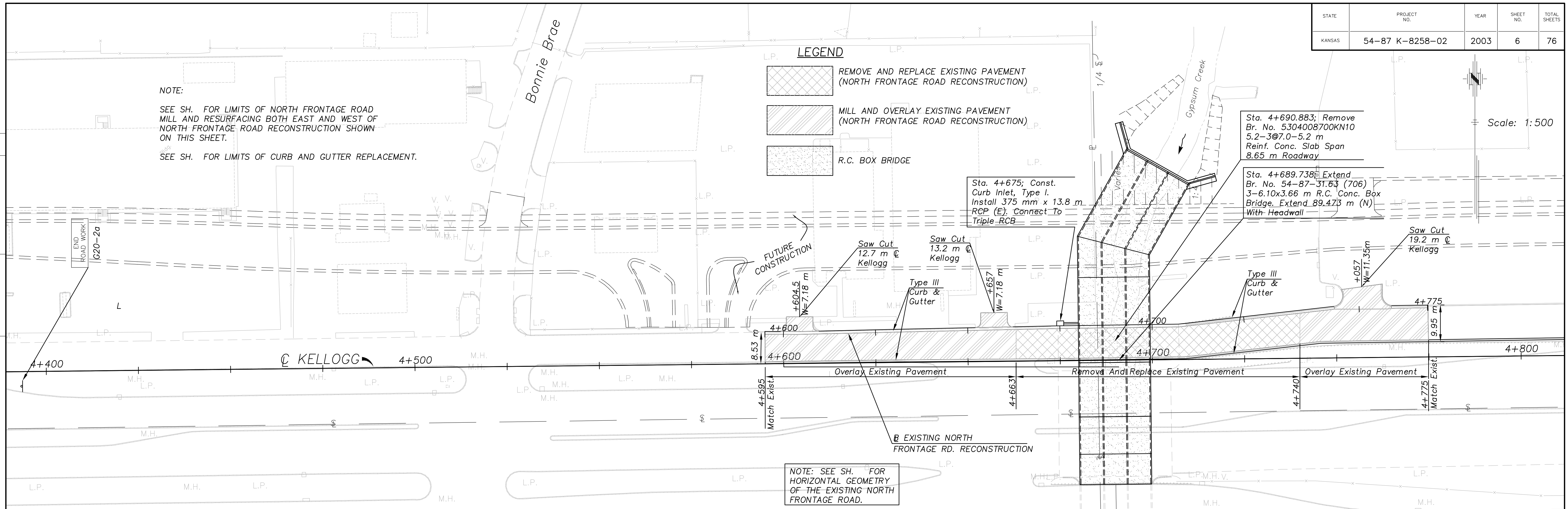
**LEGEND**

-  REMOVE AND REPLACE EXISTING PAVEMENT  
(NORTH FRONTAGE ROAD RECONSTRUCTION)
-  MILL AND OVERLAY EXISTING PAVEMENT  
(NORTH FRONTAGE ROAD RECONSTRUCTION)
-  R.C. BOX BRIDGE

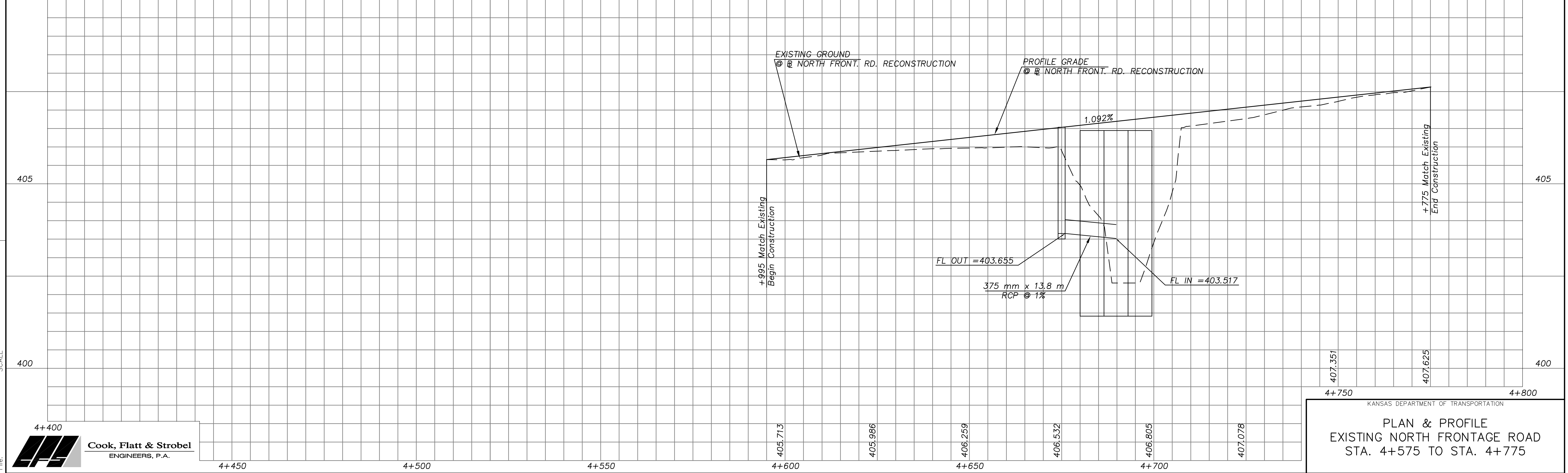
Scale: 1:500

DATE	BY

REFERENCE NOTED	REFERENCE CHECKED



NOTE: SEE SH. FOR HORIZONTAL GEOMETRY OF THE EXISTING NORTH FRONTAGE ROAD.



KANSAS DEPARTMENT OF TRANSPORTATION

**PLAN & PROFILE  
 EXISTING NORTH FRONTAGE ROAD  
 STA. 4+575 TO STA. 4+775**

4+400  
  
**Cook, Flatt & Strobel**  
 ENGINEERS, P.A.