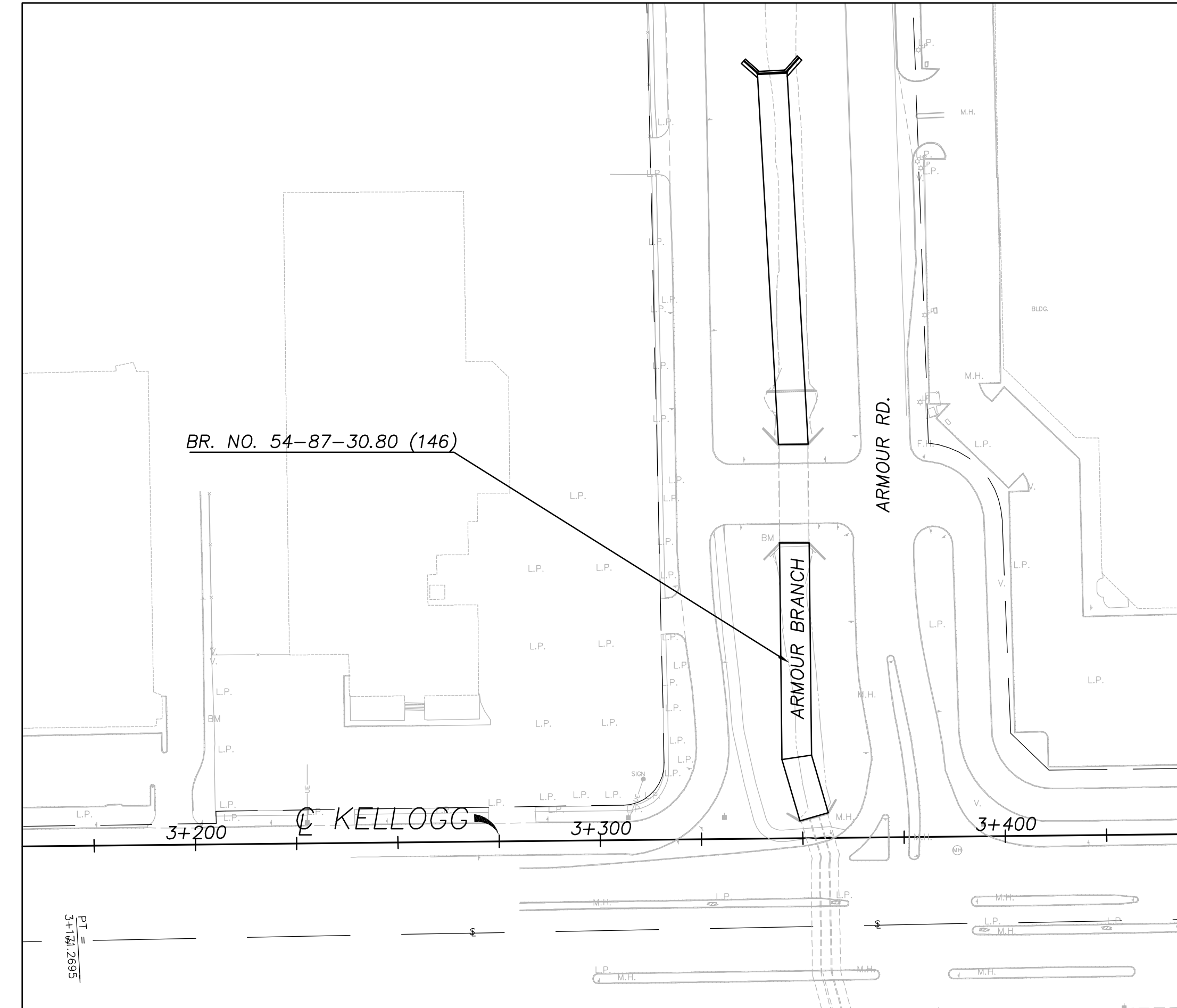
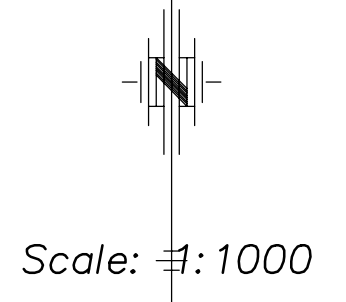
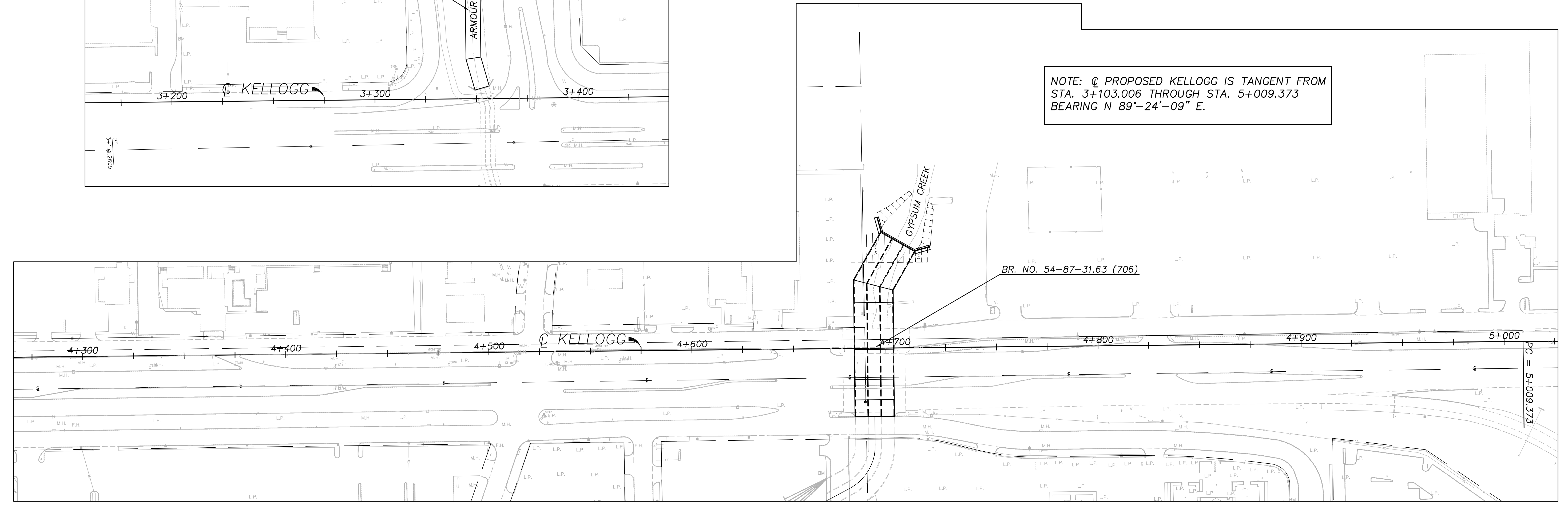


CENTERLINE KELLOGG COORDINATES

Station	Northing	Easting	Tangential Direction
3+200	513196.80725	510127.52382	N 89-24-09 E
3+300	513197.85024	510227.51838	N 89-24-09 E
3+400	513198.89323	510327.51294	N 89-24-09 E
3+500	513199.93622	510427.50750	N 89-24-09 E
3+600	513200.97921	510527.50206	N 89-24-09 E
3+700	513202.02220	510627.49662	N 89-24-09 E
3+800	513203.06519	510727.49118	N 89-24-09 E
3+900	513204.10818	510827.48574	N 89-24-09 E
4+000	513205.15117	510927.48030	N 89-24-09 E
4+100	513206.19416	511027.47487	N 89-24-09 E
4+200	513207.23715	511127.46943	N 89-24-09 E
4+300	513208.28014	511227.46399	N 89-24-09 E
4+400	513209.32313	511327.45855	N 89-24-09 E
4+500	513210.36612	511427.45311	N 89-24-09 E
4+600	513211.40911	511527.44767	N 89-24-09 E
4+700	513212.45210	511627.44223	N 89-24-09 E
4+800	513213.49509	511727.43679	N 89-24-09 E
4+900	513214.53808	511827.43135	N 89-24-09 E
5+000	513215.58106	511927.42591	N 89-24-09 E



NOTE: © PROPOSED KELLOGG IS TANGENT FROM STA. 3+103.006 THROUGH STA. 5+009.373 BEARING N 89°-24'-09" E.



BY	DATE
REFERENCE NOTED	
REFERENCE CHECKED	

Drawn by: Plotted: SCALE: 1"=100'



BM #15 "□" Cut S.W. Cor. Bridge 26.3 m W. & 12.6 m S. of © of Intersection Armour & Kellogg  
27.6 m Rt. Armour © Sta. 49+925.087 Elev. = 409.006

BM #16 - "□" Cut Top of Curb on the E. Curb Line of the Men's Warehouse, 35.0 m N. of © of N. Frontage Rd. 42.9 m Lt © Sta. 3+504.4 Elev. = 410.195

KANSAS DEPARTMENT OF TRANSPORTATION  
GEOMETRICS  
EAST KELLOGG US-54  
Wichita, Kansas Sedgwick, Co.