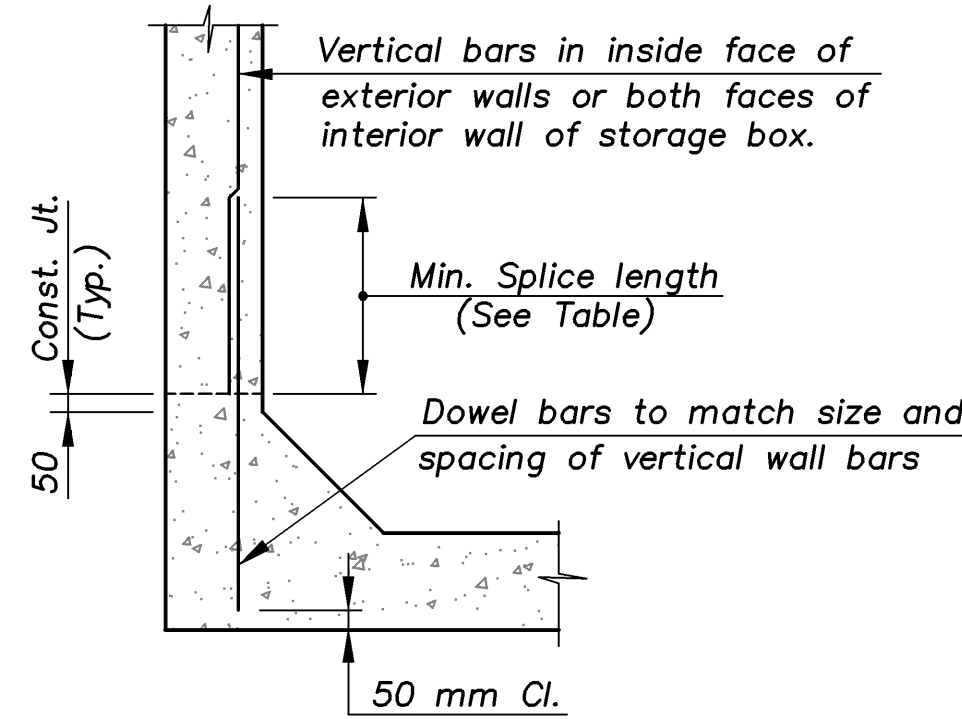


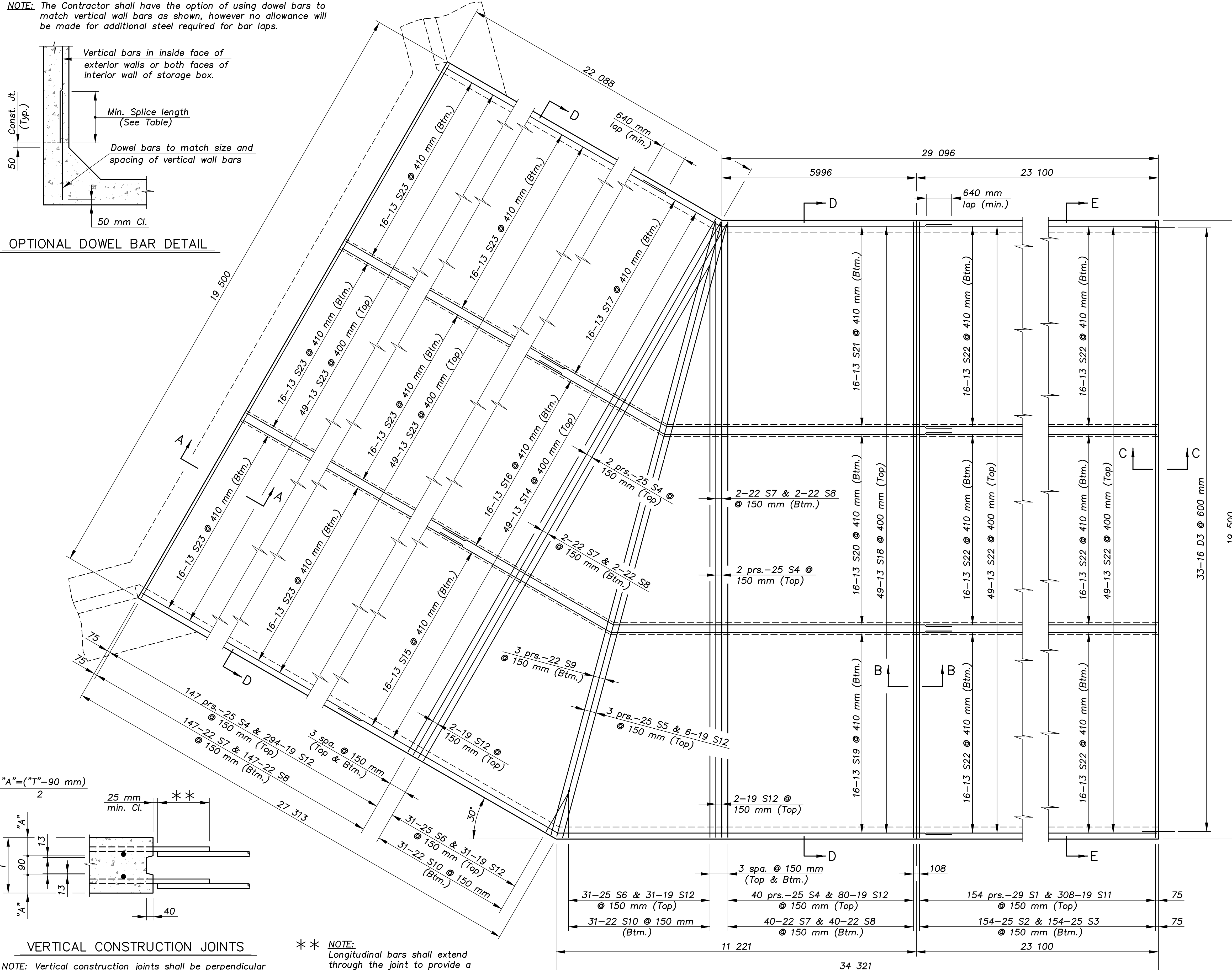
NOTE: The Contractor shall have the option of using dowel bars to match vertical wall bars as shown, however no allowance will be made for additional steel required for bar laps.



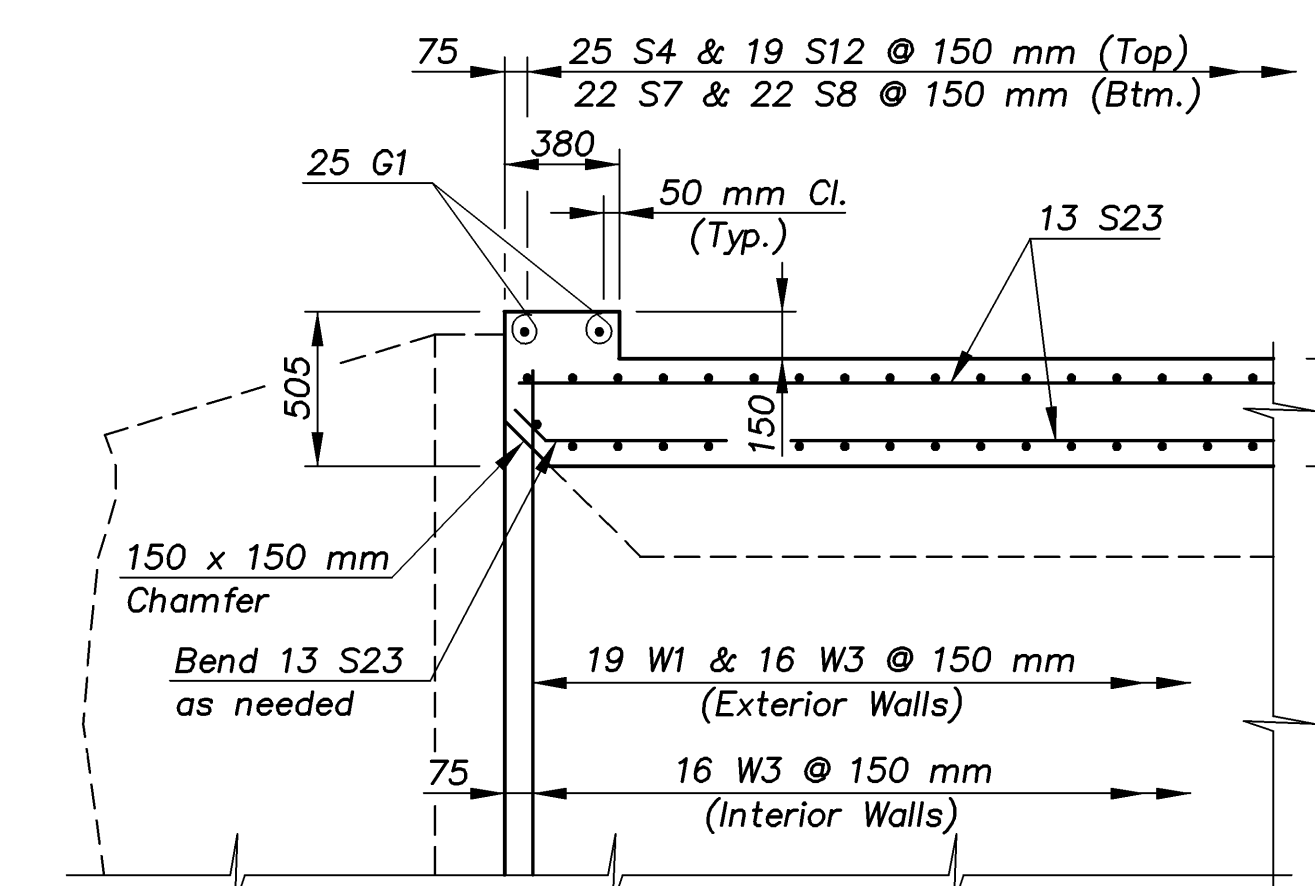
OPTIONAL DOWEL BAR DETAIL

E.F. INDICATES EACH FACE.
N.F. INDICATES NEAR FACE.
F.F. INDICATES FAR FACE.

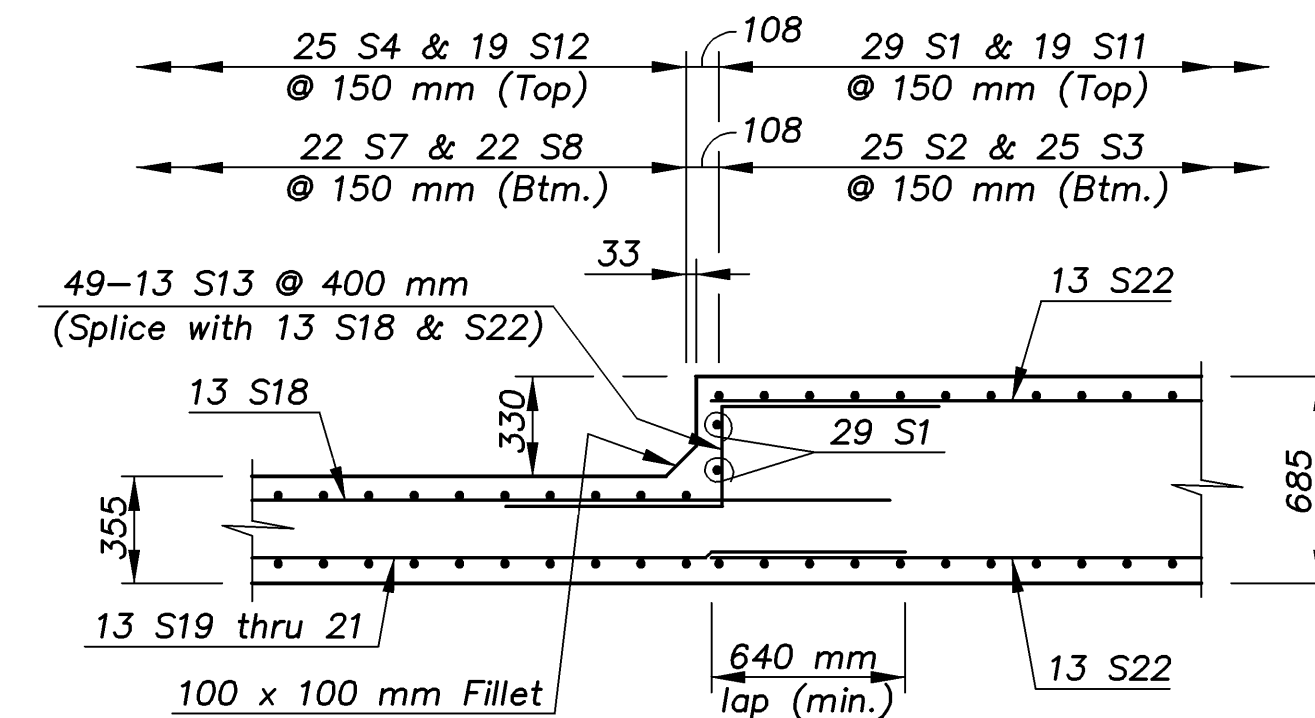
STATE	PROJECT NO.	YEAR	SHEET NO.	TOTAL SHEETS
KANSAS	54-87 K-8258-02	2003	24	76



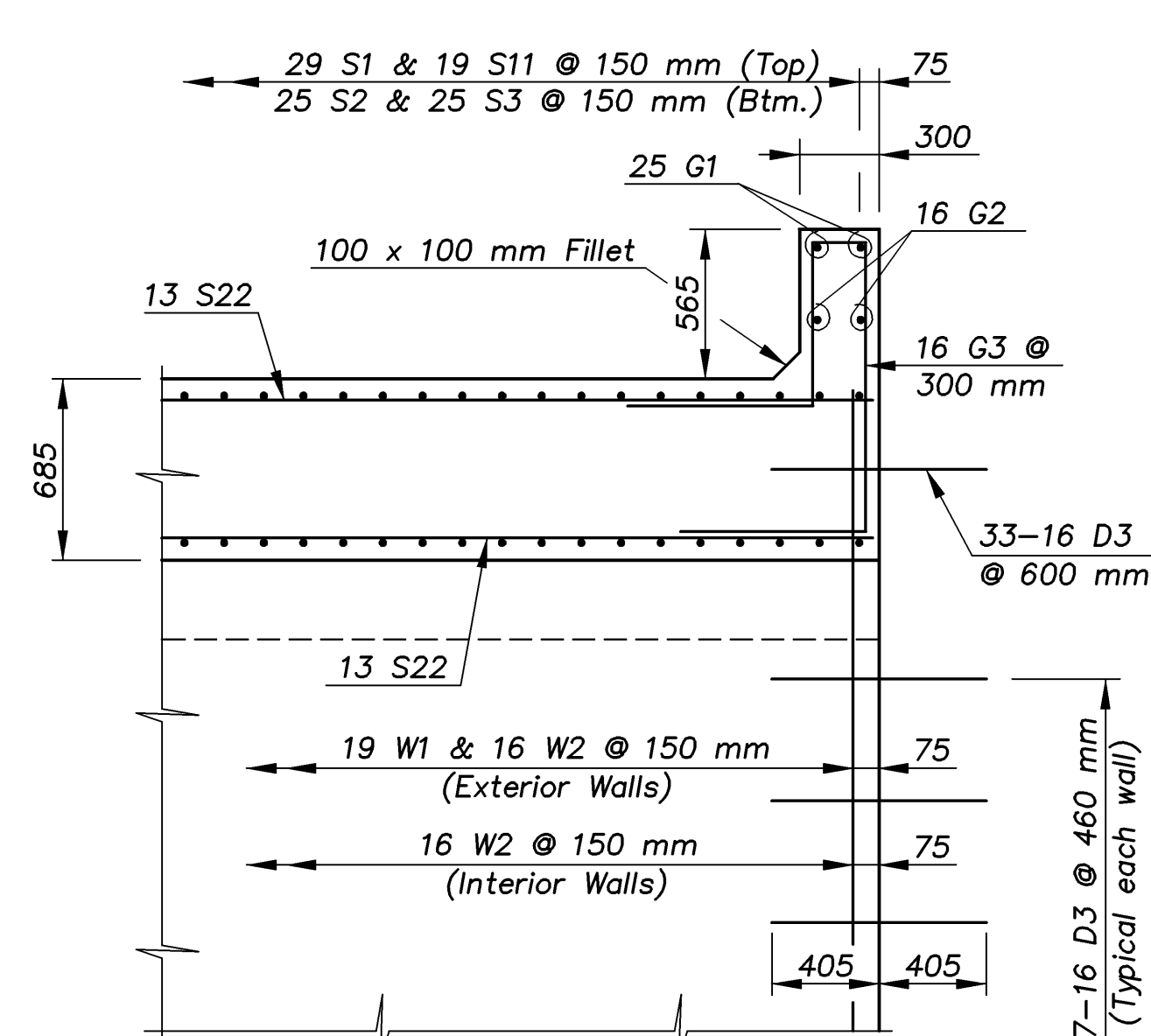
PLAN OF SLAB REINFORCING STEEL



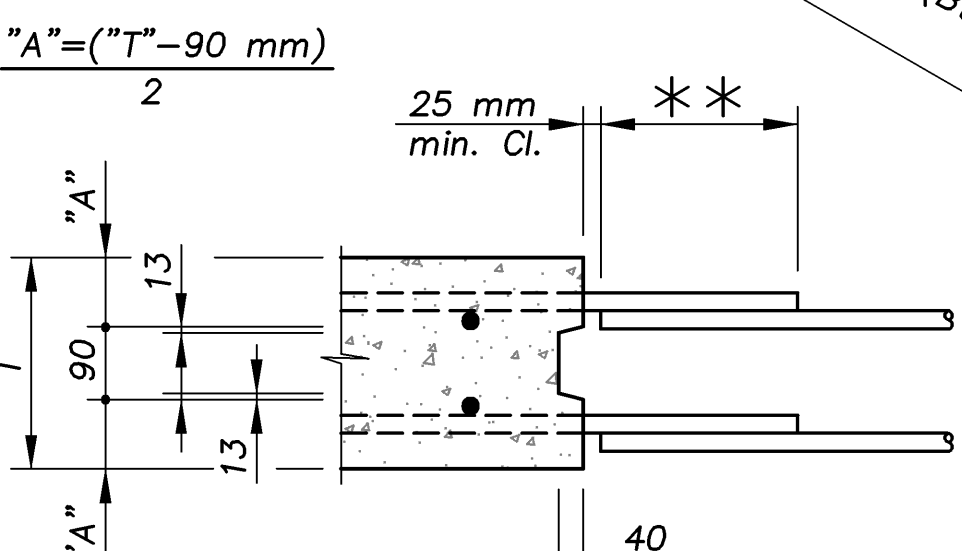
SECTION A-A



SECTION B-B



SECTION C-C



VERTICAL CONSTRUCTION JOINTS

NOTE: Vertical construction joints shall be perpendicular to the longitudinal axis of the R.C.B. and shall be placed at any location as needed for construction and as approved by the Engineer. Vertical construction joints shall be protected by a bentonite based system as shown on the Plans

NOTE: Horizontal construction joints shall be a roughened finish.

NOTE: Longitudinal bars shall extend through the joint to provide a minimum lap equal to the required splice length. See table for required splice length.

NOTE: For Section D-D & Section E-E see "Typical Sections (Part "A")" sheet.

KANSAS DEPARTMENT OF TRANSPORTATION
BR. NO. 54-87-31.63(706) STA. 4+689.738

TRIPLE 6.1 x 3.7 m R.C.B. SLAB DETAILS (Part "A")

DESIGNED R.S.C. SCALE Varies
DETAILED T.R.G. DATE
QUANTITIES T.R.G. SHEET 3 OF 13

Cook, Flatt & Strobel ENGINEERS, P.A.

Proj. No. 54-87 K-8258-02 SEDGWICK COUNTY