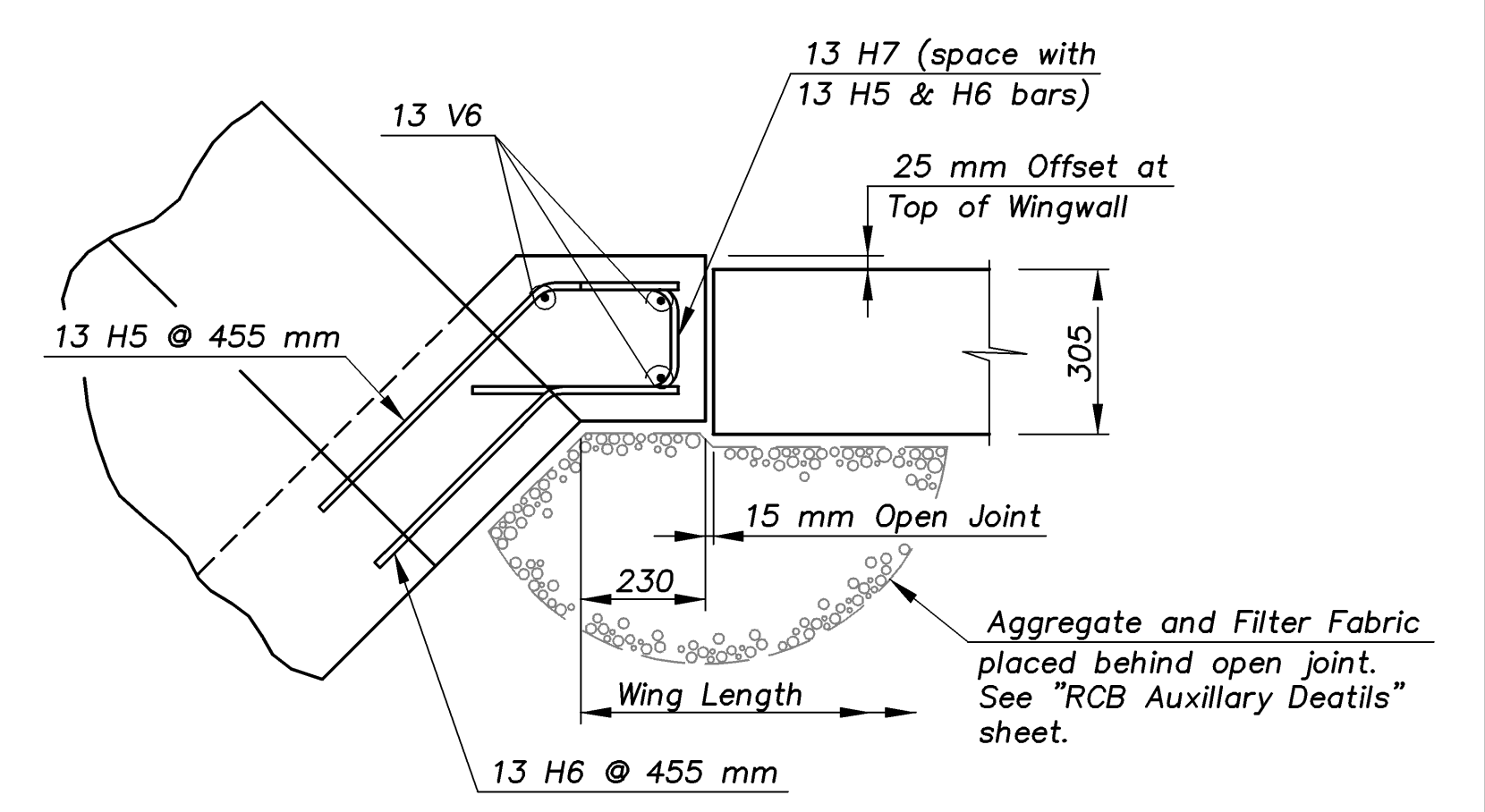
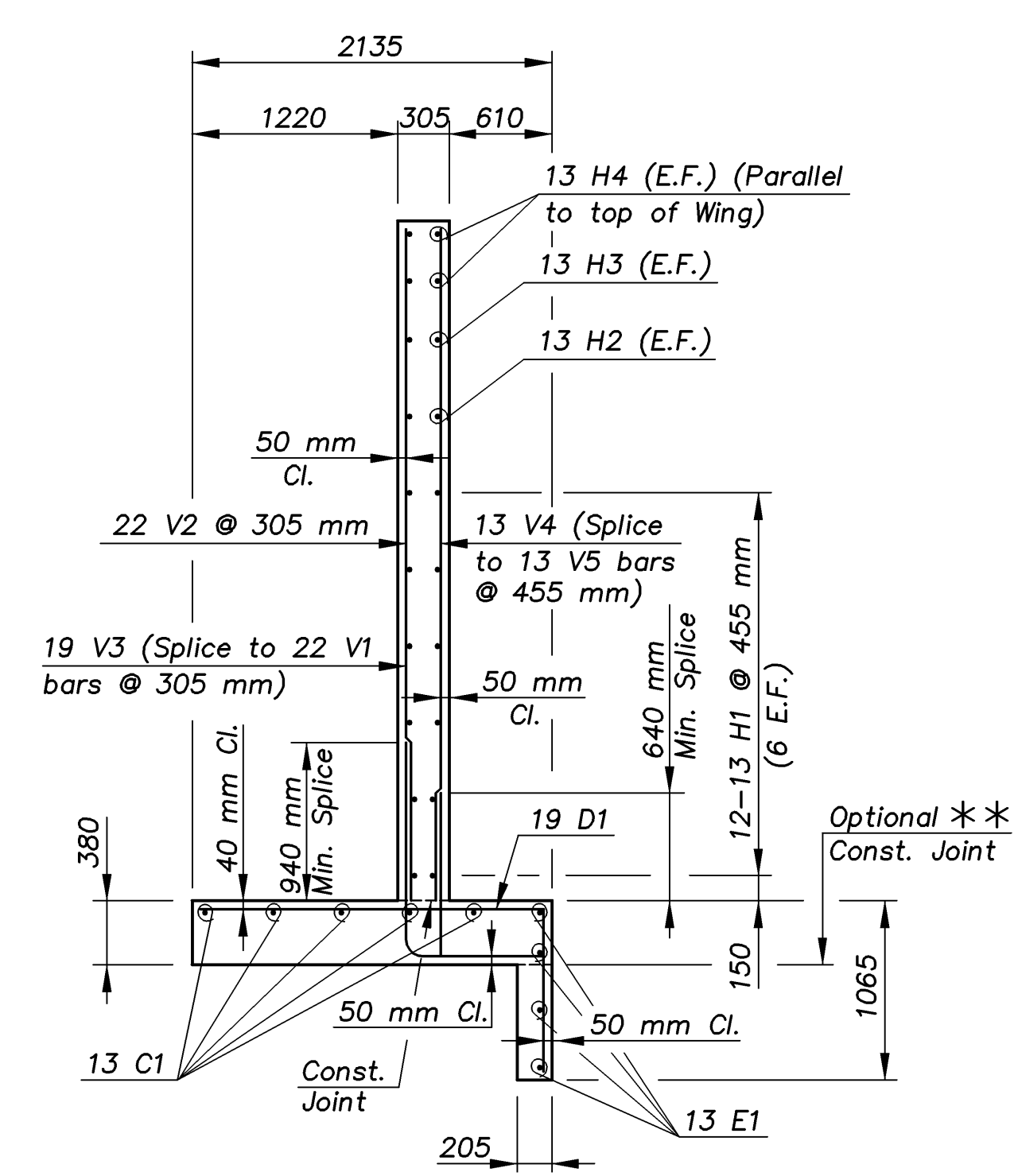
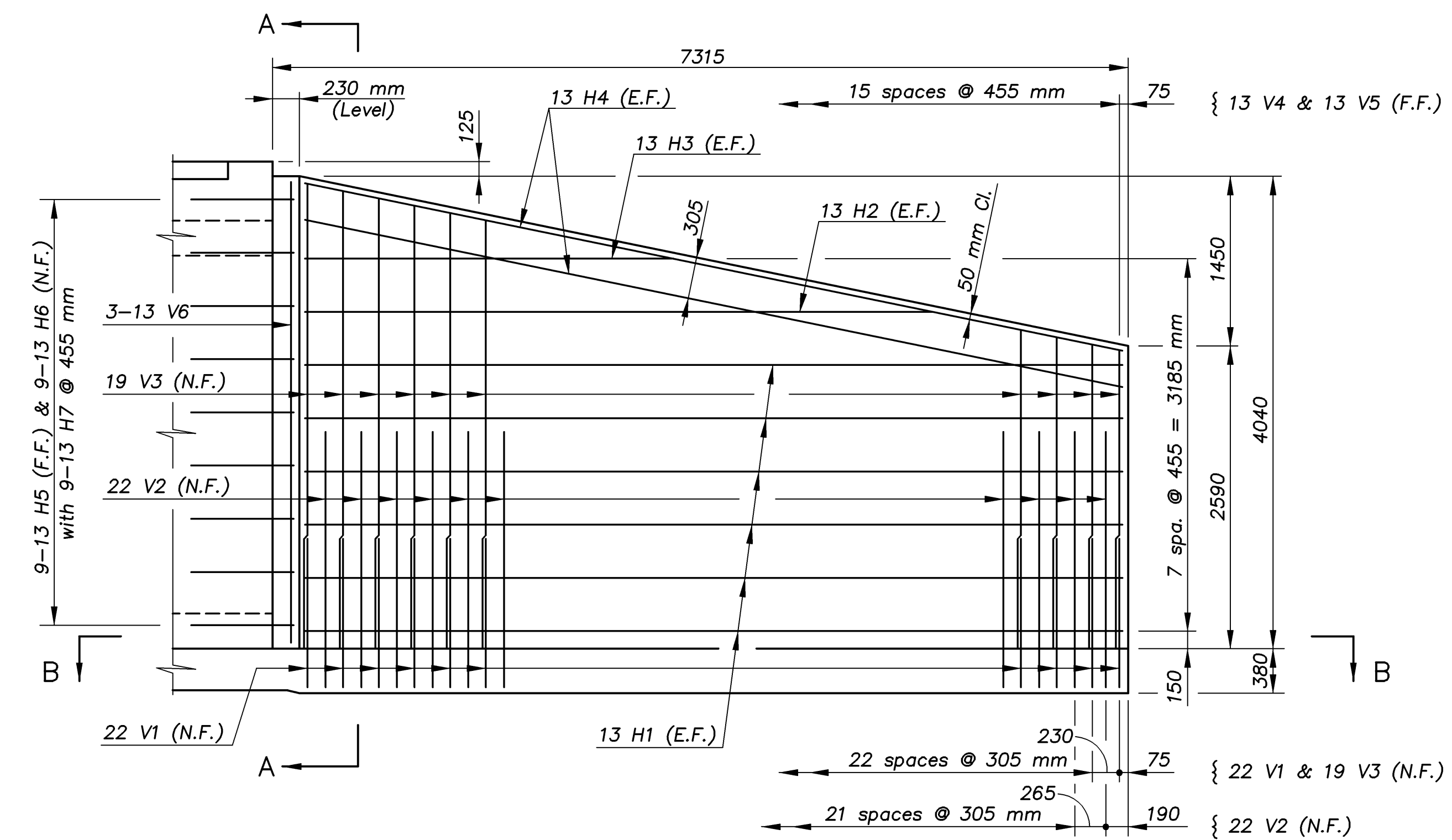
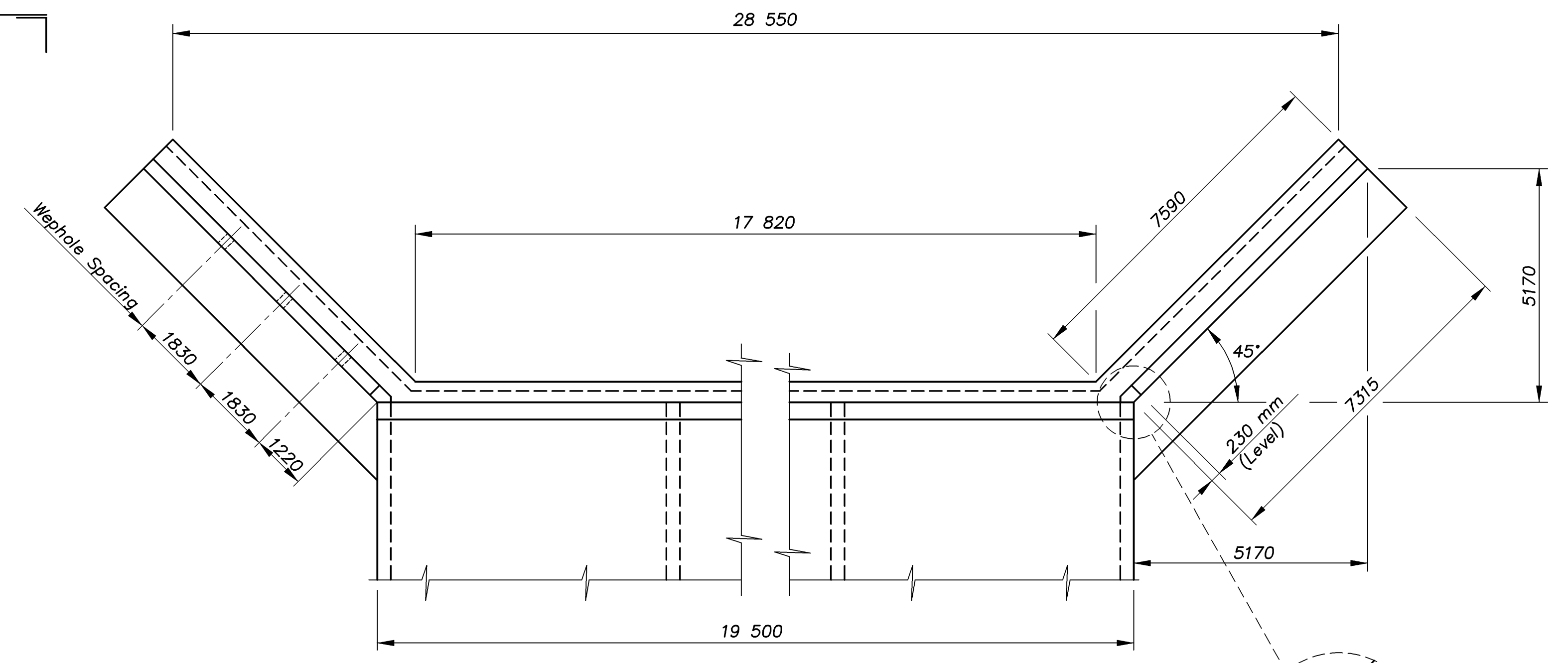
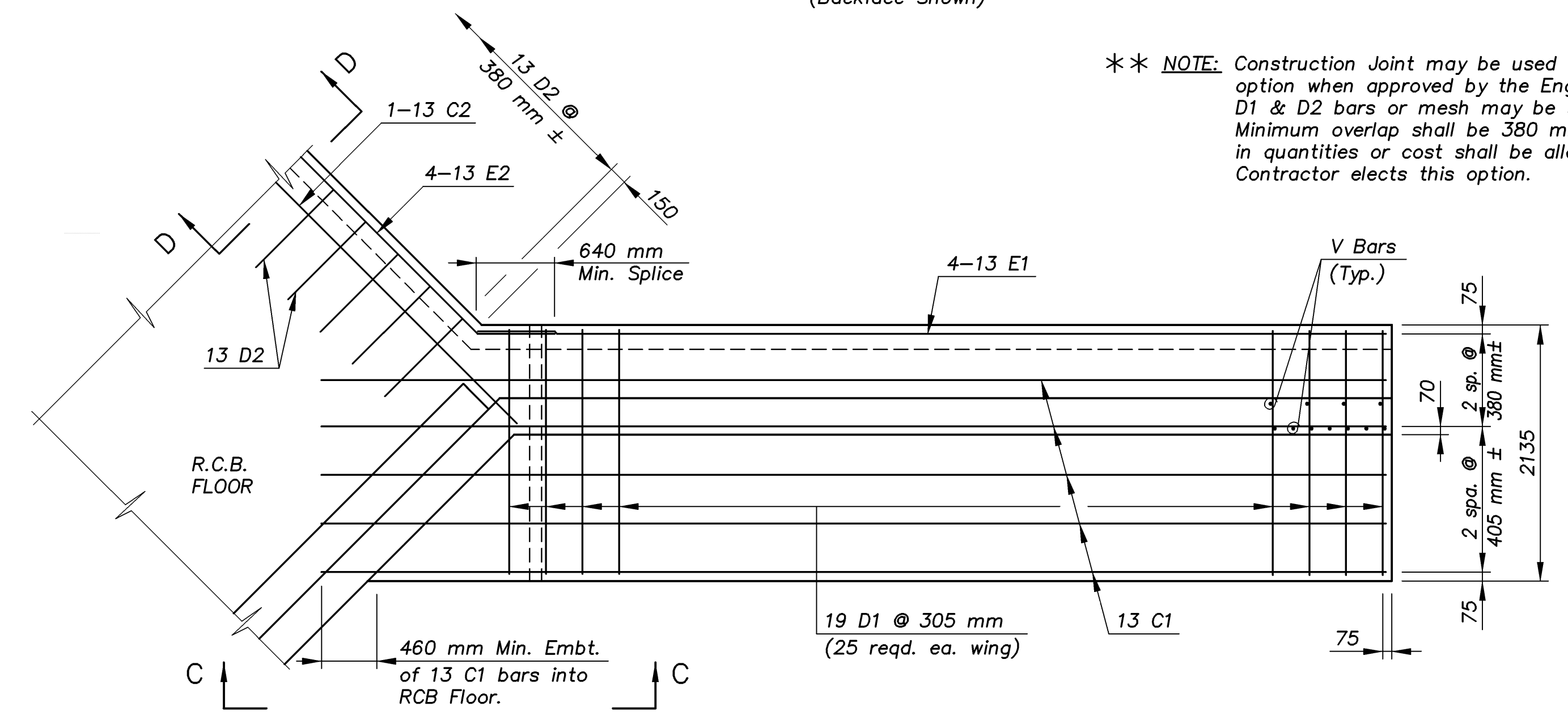


E.F. INDICATES EACH FACE.  
N.F. INDICATES NEAR FACE.  
F.F. INDICATES FAR FACE.

STATE	PROJECT NO.	YEAR	SHEET NO.	TOTAL SHEETS
KANSAS	54-87 K-8258-02	2003	27	76

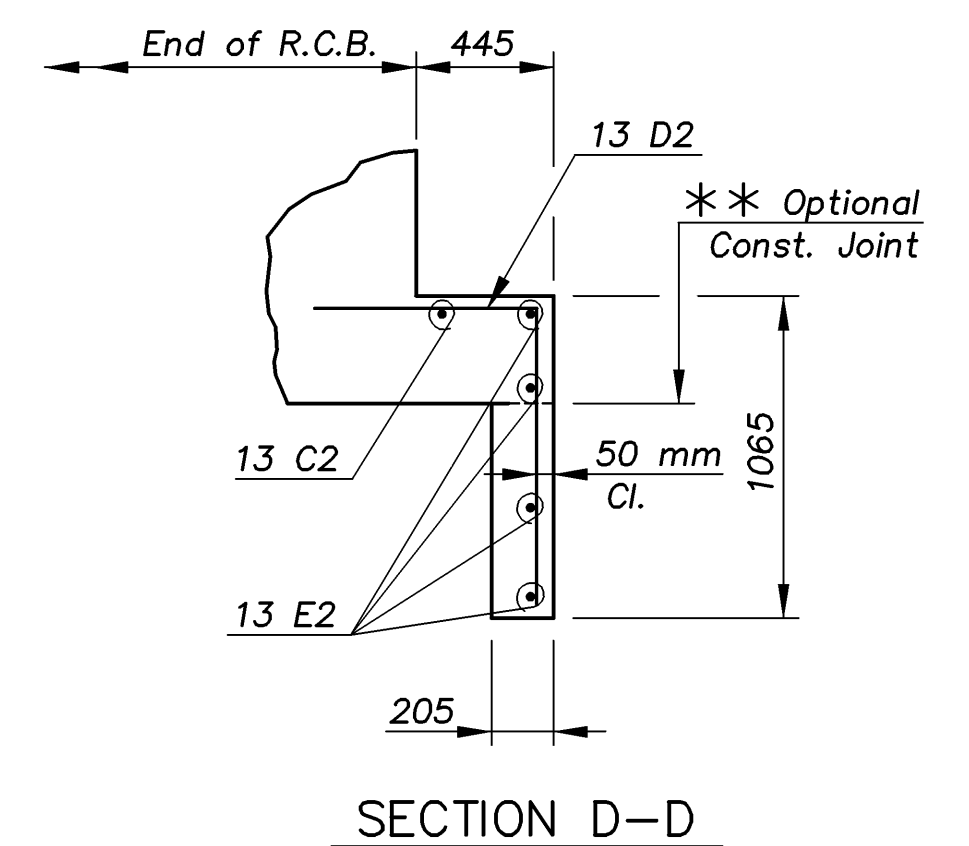
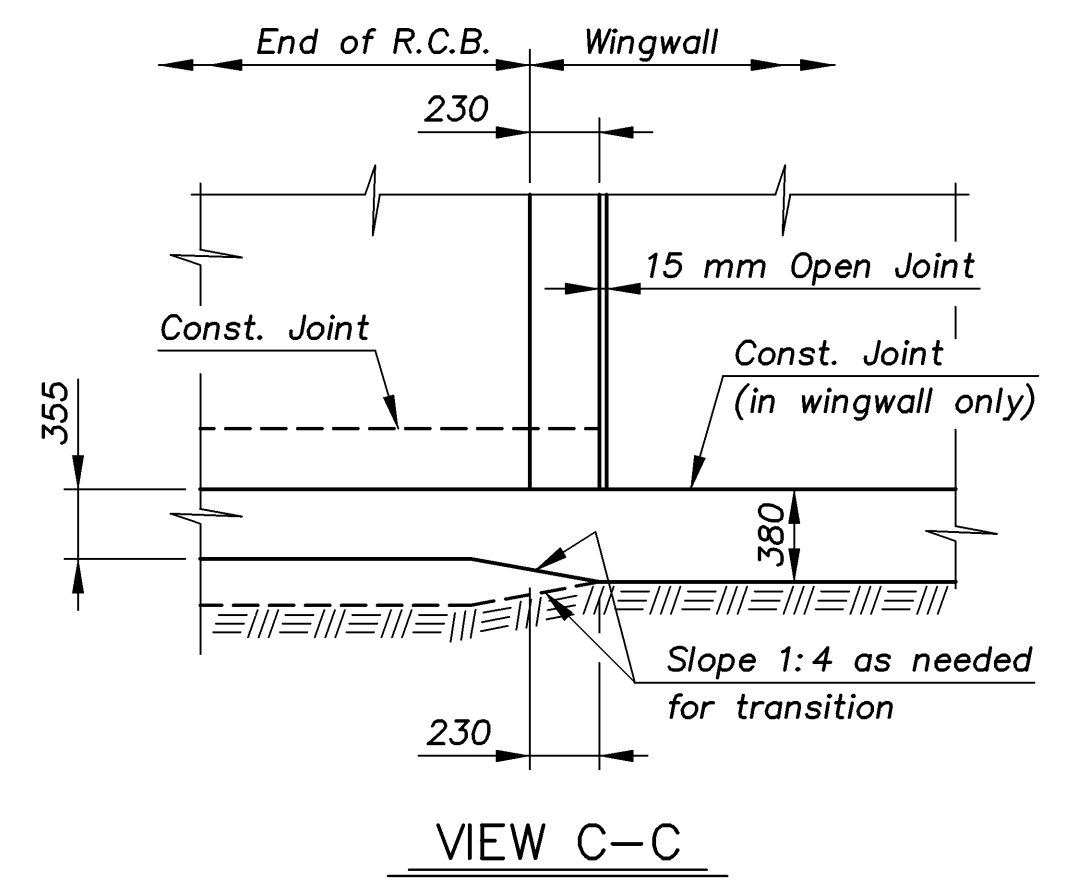


\*\* NOTE: Construction Joint may be used at Contractor's option when approved by the Engineer. D1 & D2 bars or mesh may be spliced thus: Minimum overlap shall be 380 mm. No increase in quantities or cost shall be allowed when Contractor elects this option.



NOTE: Space Weepoles to clear wing reinforcing steel. See R.C.B. Auxiliary Details" sheet for additional weepole details.

MINIMUM SPLICE LENGTHS	
Bar Size	Splice Length
13 M	640 mm
16 M	790 mm
19 M	940 mm
22 M	1195 mm
25 M	1550 mm
29 M	1850 mm



KANSAS DEPARTMENT OF TRANSPORTATION  
BR. NO. 54-87-31.63(706) STA. 4+689.738  
**TRIPLE 6.1 x 3.7 m R.C.B. WINGWALL DETAILS (Part "A")**  
Proj. No. 54-87 K-8258-02 SEDGWICK COUNTY

**Cook, Flatt & Strobel**  
ENGINEERS, P.A.  
DESIGNED R.S.C. SCALE Varies  
DETAILED T.R.G. DATE  
QUANTITIES T.R.G. SHEET 6 OF 13

J:\01026B\GYPSUM\DETAILS 1:250