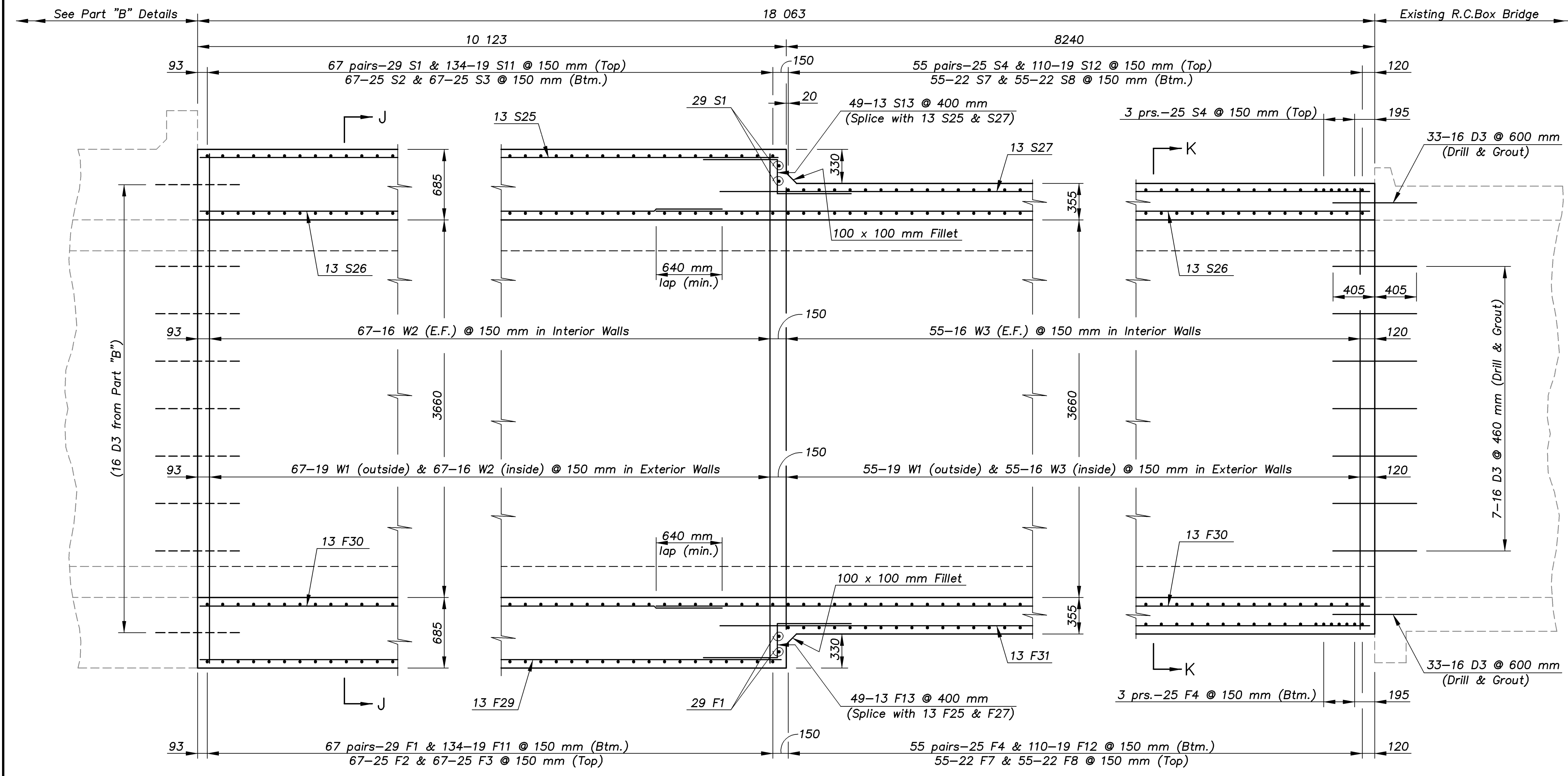
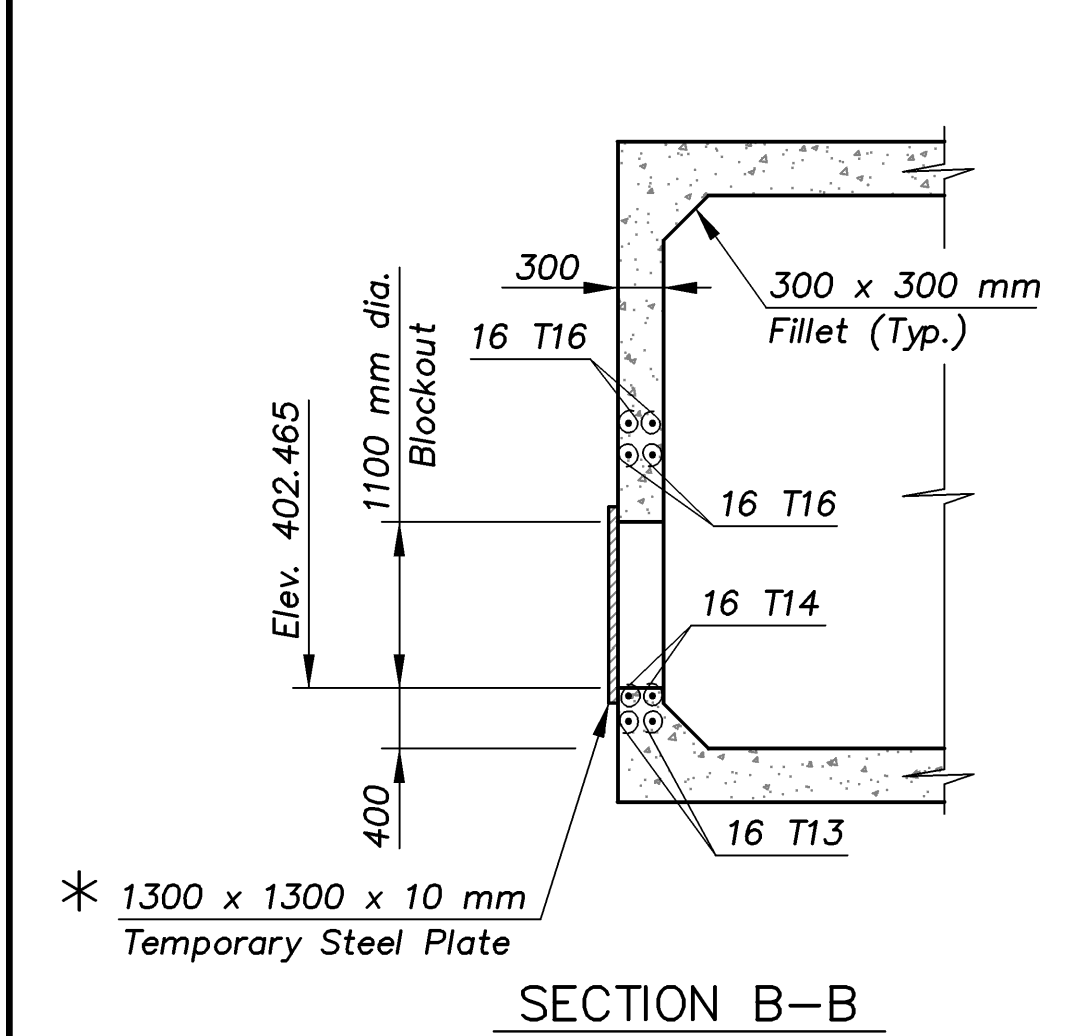


E.F. INDICATES EACH FACE.
 N.F. INDICATES NEAR FACE.
 F.F. INDICATES FAR FACE.

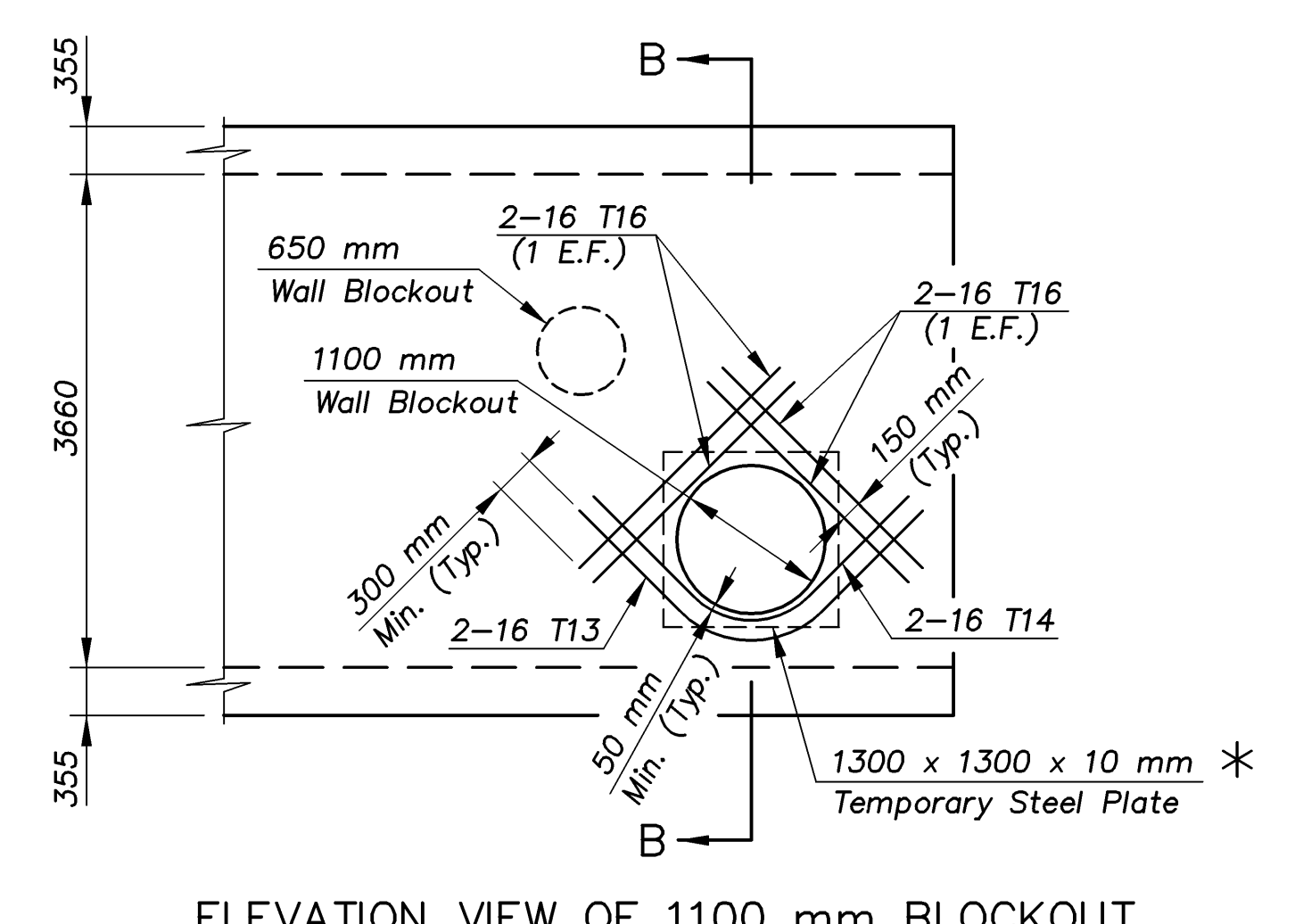
| STATE | PROJECT NO. | YEAR | SHEET NO. | TOTAL SHEETS |
|--------|-----------------|------|-----------|--------------|
| KANSAS | 54-87 K-8258-02 | 2003 | 31 | 76 |



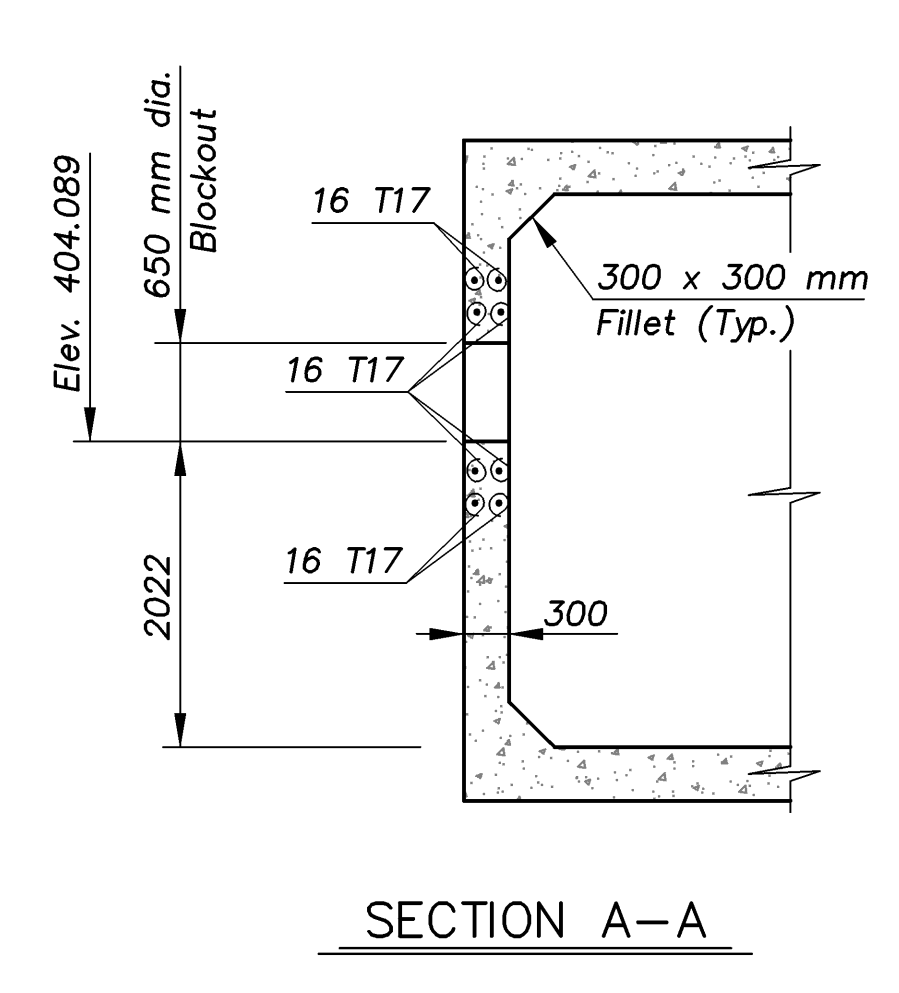
PART LONGITUDINAL SECTION



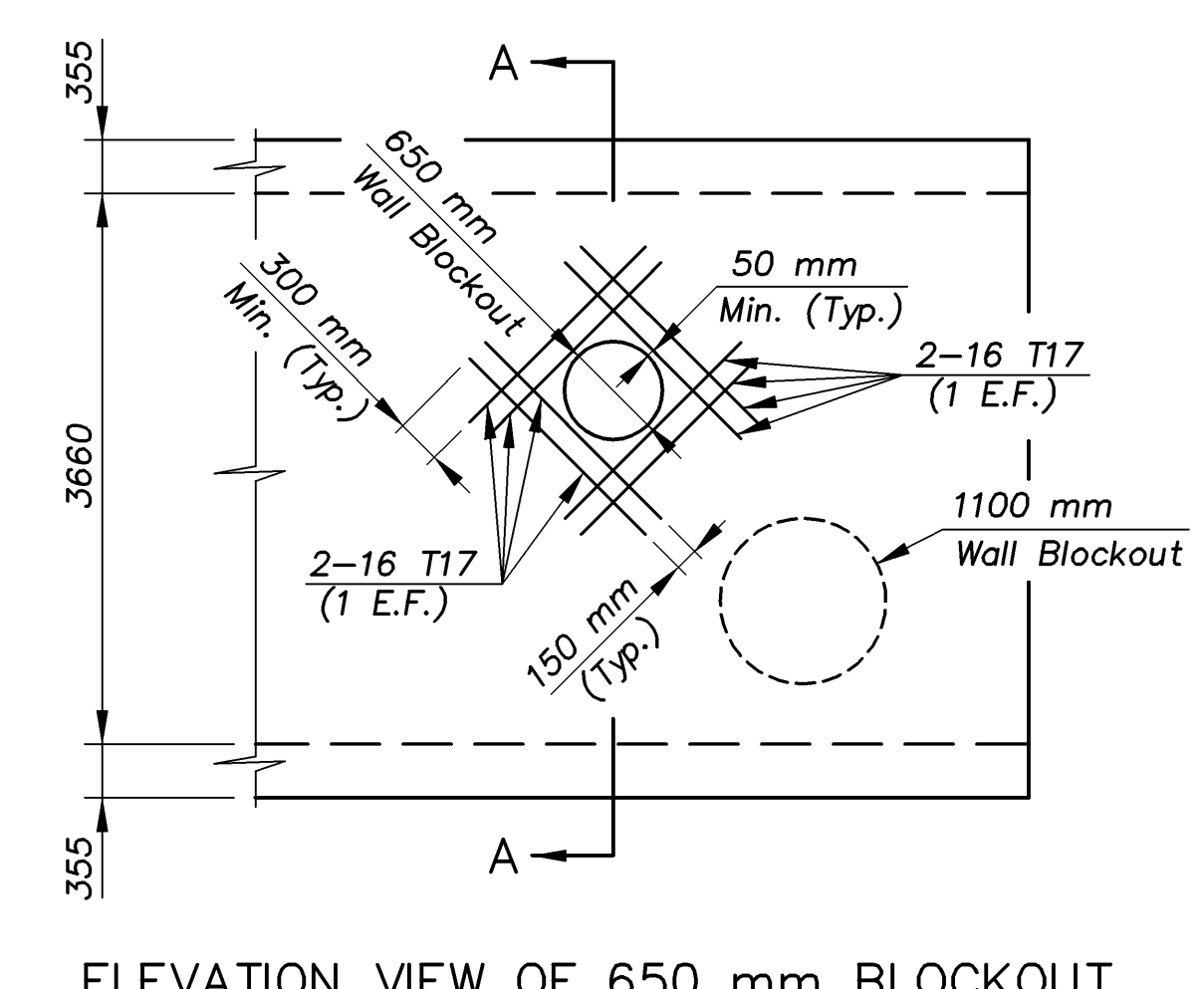
SECTION B-B



ELEVATION VIEW OF 1100 mm BLOCKOUT



SECTION A-A



ELEVATION VIEW OF 650 mm BLOCKOUT

* NOTE: The Contractor shall install temporary steel plates over the blockout openings on the exterior face of walls as shown on the details. Shop drawings of the plates and the method of support shall be submitted to the Engineer for approval. All wall blockout locations shall be verified in the field. All materials and the labor necessary to furnish and install the temporary steel plates shall be Subsidiary to the bid item "Concrete (Grade 30) AE".

KANSAS DEPARTMENT OF TRANSPORTATION
 BR. NO. 54-87-31.63(706) STA. 4+689.738
 TRIPLE 6.1 x 3.7 m R.C.B.
 LONGITUDINAL SECTION (Part "C")
 Proj. No. 54-87 K-8258-02 SEDGWICK COUNTY

Cook, Flatt & Strobel
 ENGINEERS, P.A.
 DESIGNED R.S.C. SCALE Varies
 DETAILED T.R.G. DATE
 QUANTITIES T.R.G. SHEET 10 OF 13

J:\010266\GYPSUM\DETAILS 1:250