

SE 1/4 SEC. 19 , T27S, R02E

STATE	PROJECT NO.	YEAR	SHEET NO.	TOTAL SHEETS
KANSAS	54-87 K-8258-02	2003	51	76

DATE	BY

REFERENCE NOTED	REFERENCE CHECKED

N: 513308.99104
E: 510283.49358

Scale: 1:500

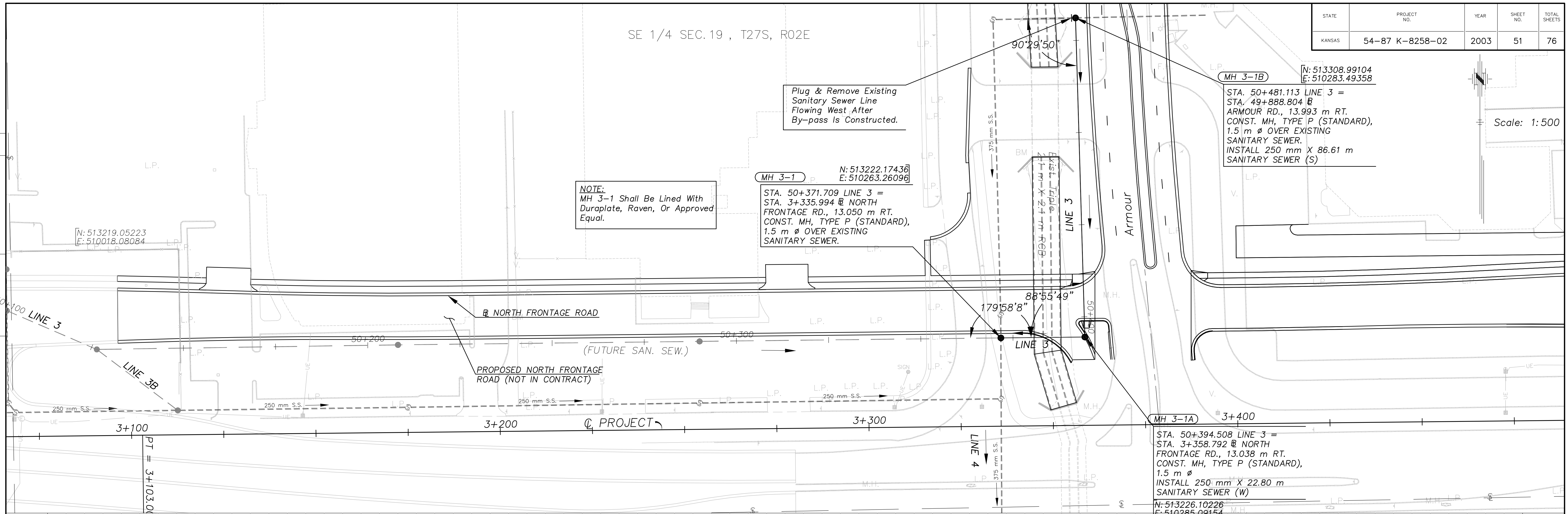
Plug & Remove Existing Sanitary Sewer Line Flowing West After By-pass Is Constructed.

NOTE:
MH 3-1 Shall Be Lined With Duraplate, Raven, Or Approved Equal.

MH 3-1
N: 513222.17436
E: 510263.26096
STA. 50+371.709 LINE 3 = STA. 3+335.994 @ NORTH FRONTAGE RD., 13.050 m RT. CONST. MH, TYPE P (STANDARD), 1.5 m Ø OVER EXISTING SANITARY SEWER.

MH 3-1B
N: 513308.99104
E: 510283.49358
STA. 50+481.113 LINE 3 = STA. 49+888.804 @ ARMOUR RD., 13.993 m RT. CONST. MH, TYPE P (STANDARD), 1.5 m Ø OVER EXISTING SANITARY SEWER. INSTALL 250 mm X 86.61 m SANITARY SEWER (S)

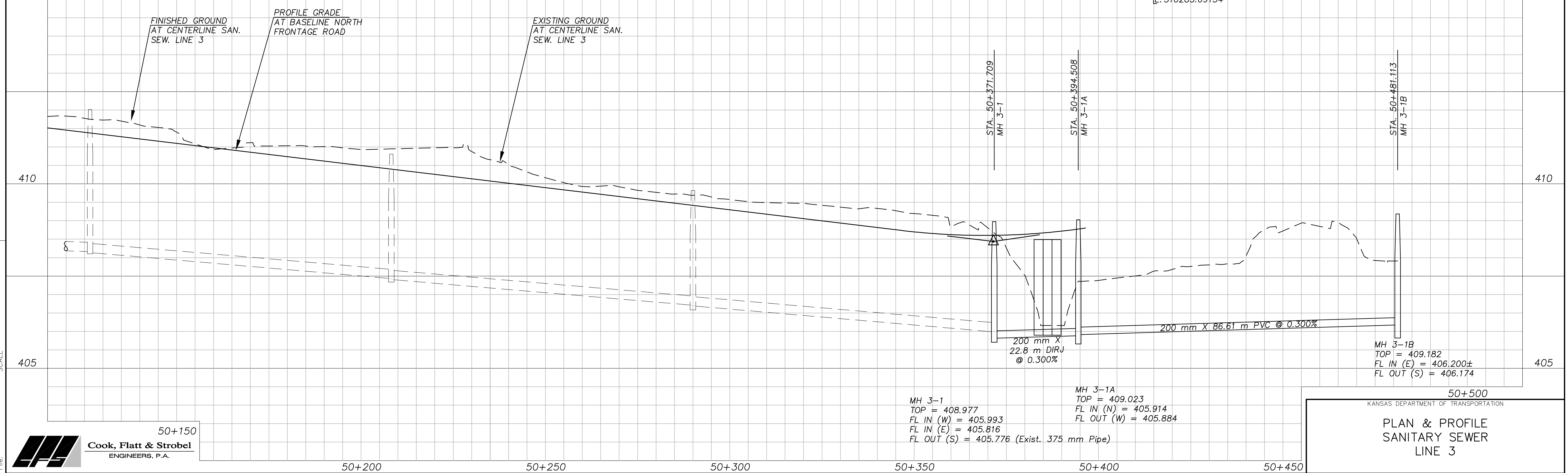
N: 513219.05223
E: 510018.08084



FINISHED GROUND AT CENTERLINE SAN. SEW. LINE 3

PROFILE GRADE AT BASELINE NORTH FRONTAGE ROAD

EXISTING GROUND AT CENTERLINE SAN. SEW. LINE 3



50+150

Cook, Flatt & Strobel
 ENGINEERS, P.A.

50+500
 KANSAS DEPARTMENT OF TRANSPORTATION
PLAN & PROFILE
SANITARY SEWER
LINE 3