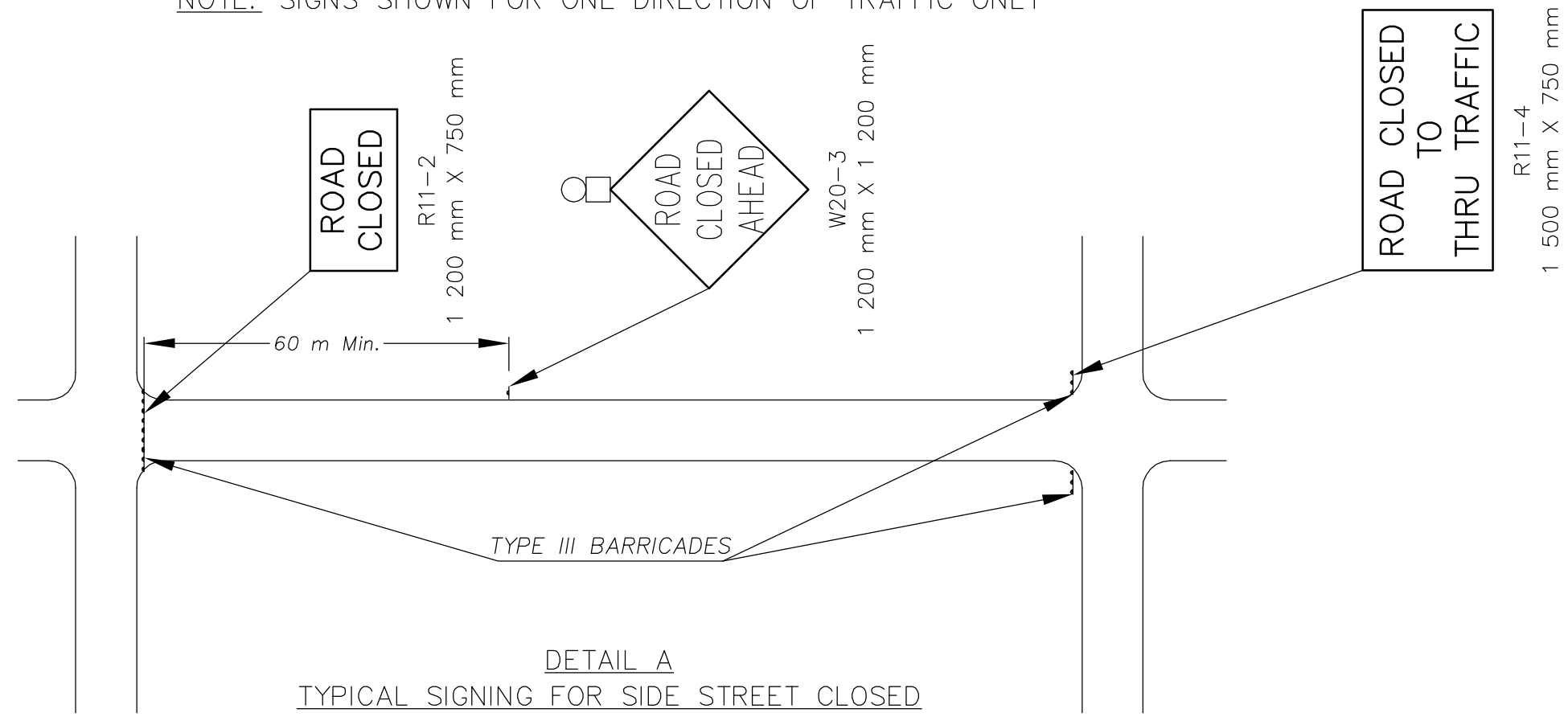


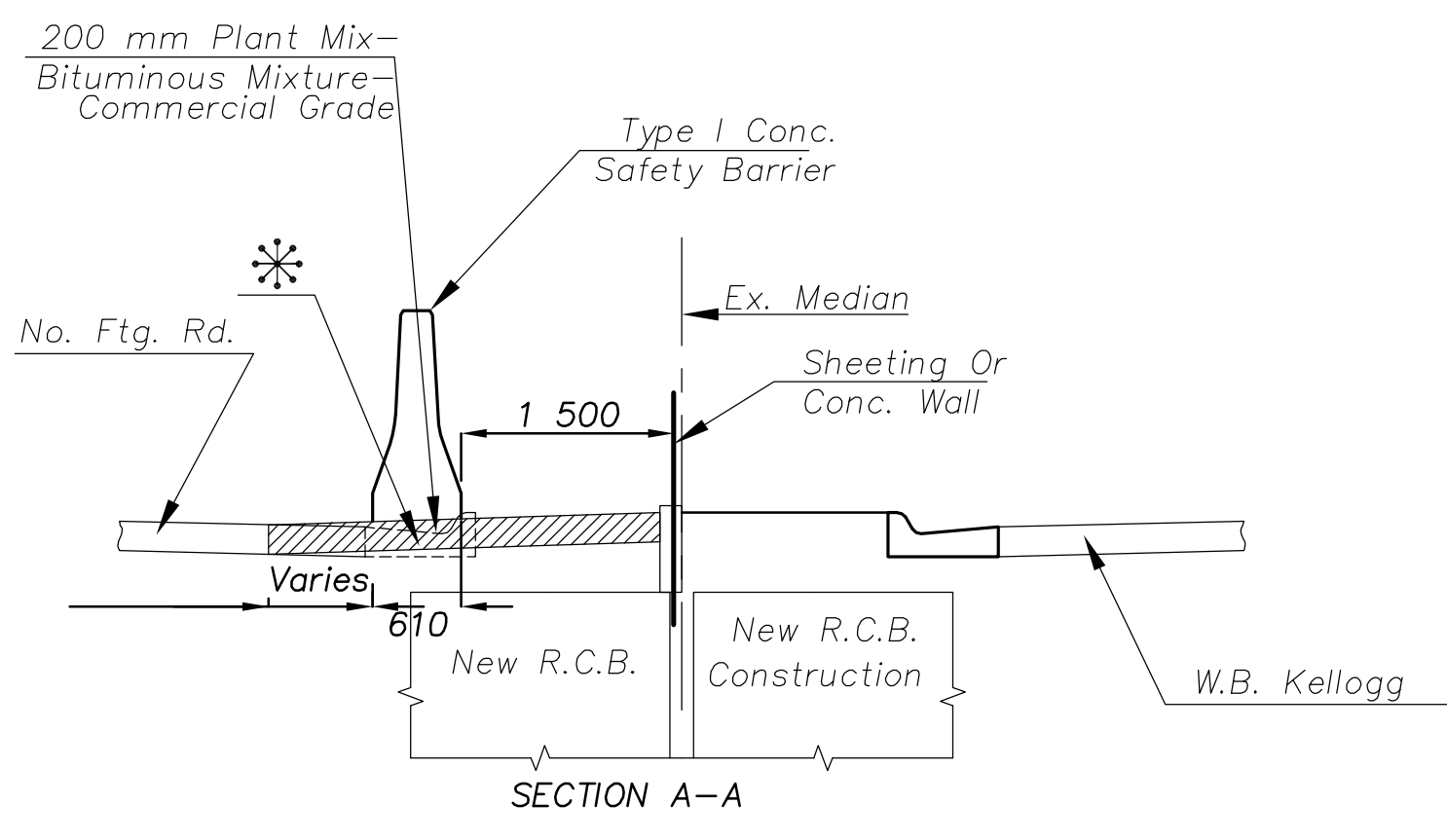
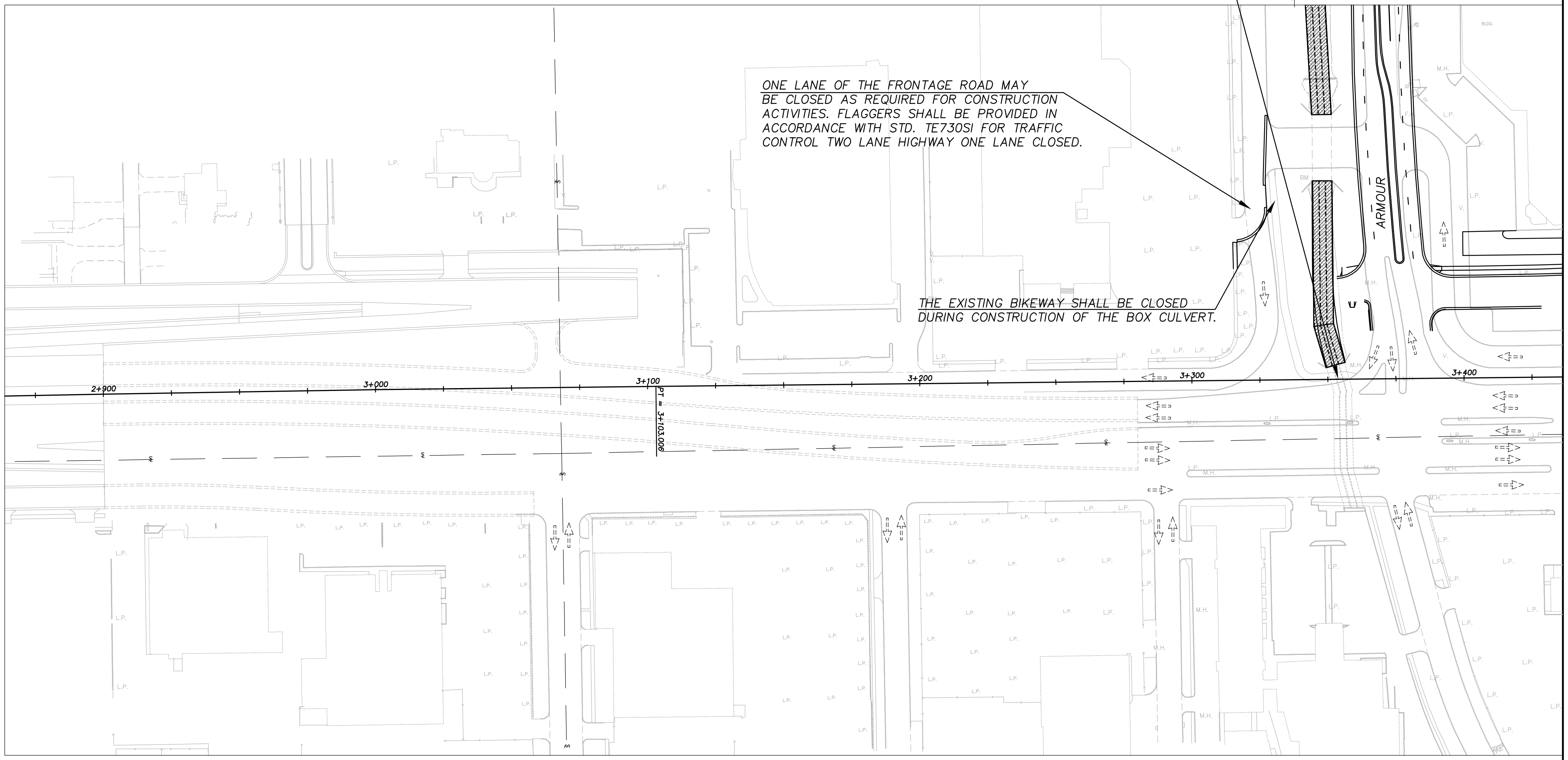
F.H.W.A. REGION NO.	STATE	PROJECT NO.	YEAR	SHEET NO.	TOTAL SHEETS
7	KANSAS	54-87 K-8258-02	2003	56	76

NOTE: SIGNS SHOWN FOR ONE DIRECTION OF TRAFFIC ONLY

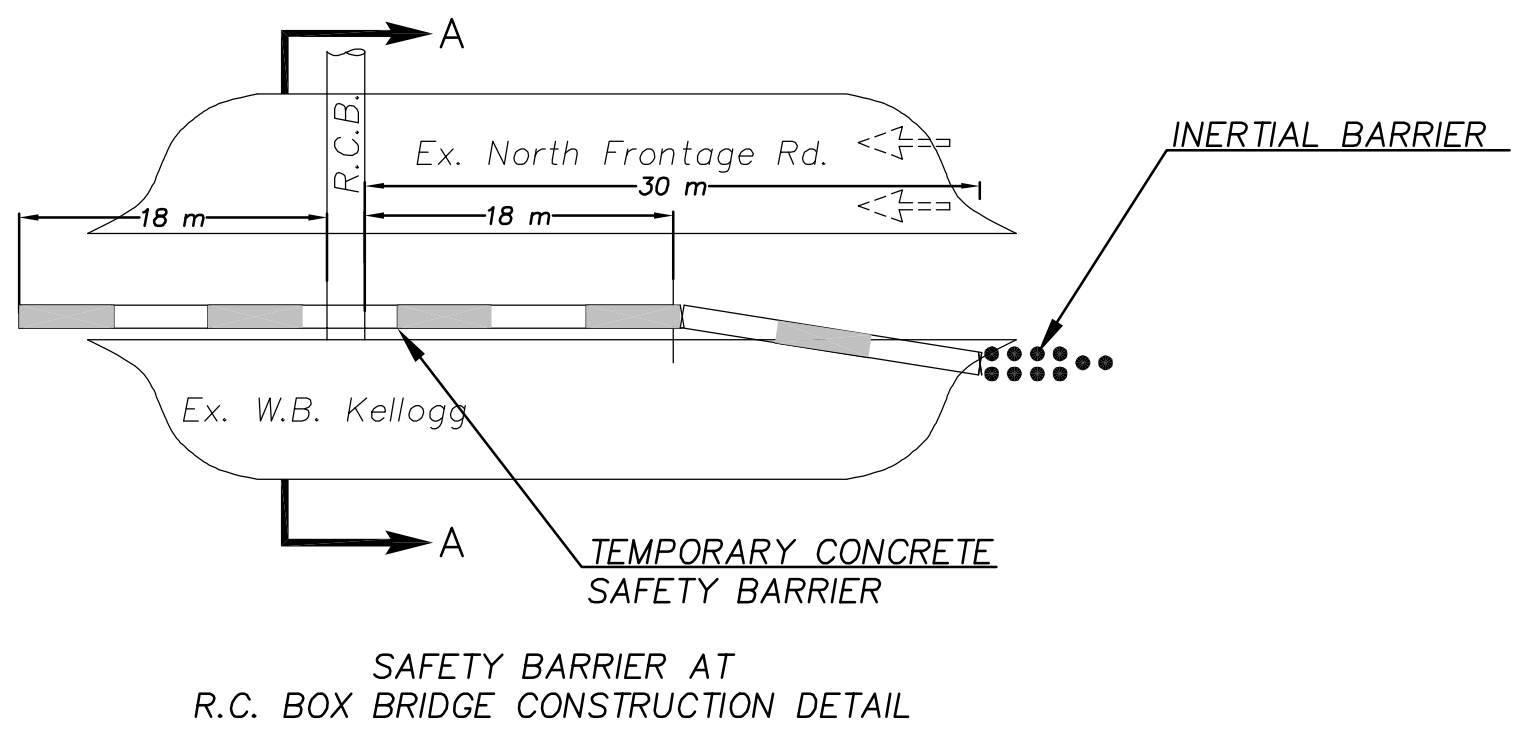


STA. 3+354.326; EXTEND BR. NO. 54-87-30.80 (146) 3+213 X 2.13 m RC BOX BRIDGE EXTEND 184.502 m (N) WITH HEADWALL (INCLUDES 24.384± m OF EXISTING RCB)

SCALE = 1:1 000



\* CURB WILL BE INSTALLED AFTER SHOO FLYS ARE REMOVED.



- LEGEND**
- TYPE III BARRICADE
  - TYPE B WARNING LIGHT
  - CHANNELIZING DEVICE
  - ROAD CLOSED
  - DRAINAGE CONSTRUCTION

KANSAS DEPARTMENT OF TRANSPORTATION  
**TRAFFIC CONTROL**  
**EAST KELLOGG**  
**STA. 2+850 TO STA. 3+450**

DATE	BY

REFERENCE NOTED	REFERENCE CHECKED

Drawn by:   
 File:   
 Scale: 1:1000

