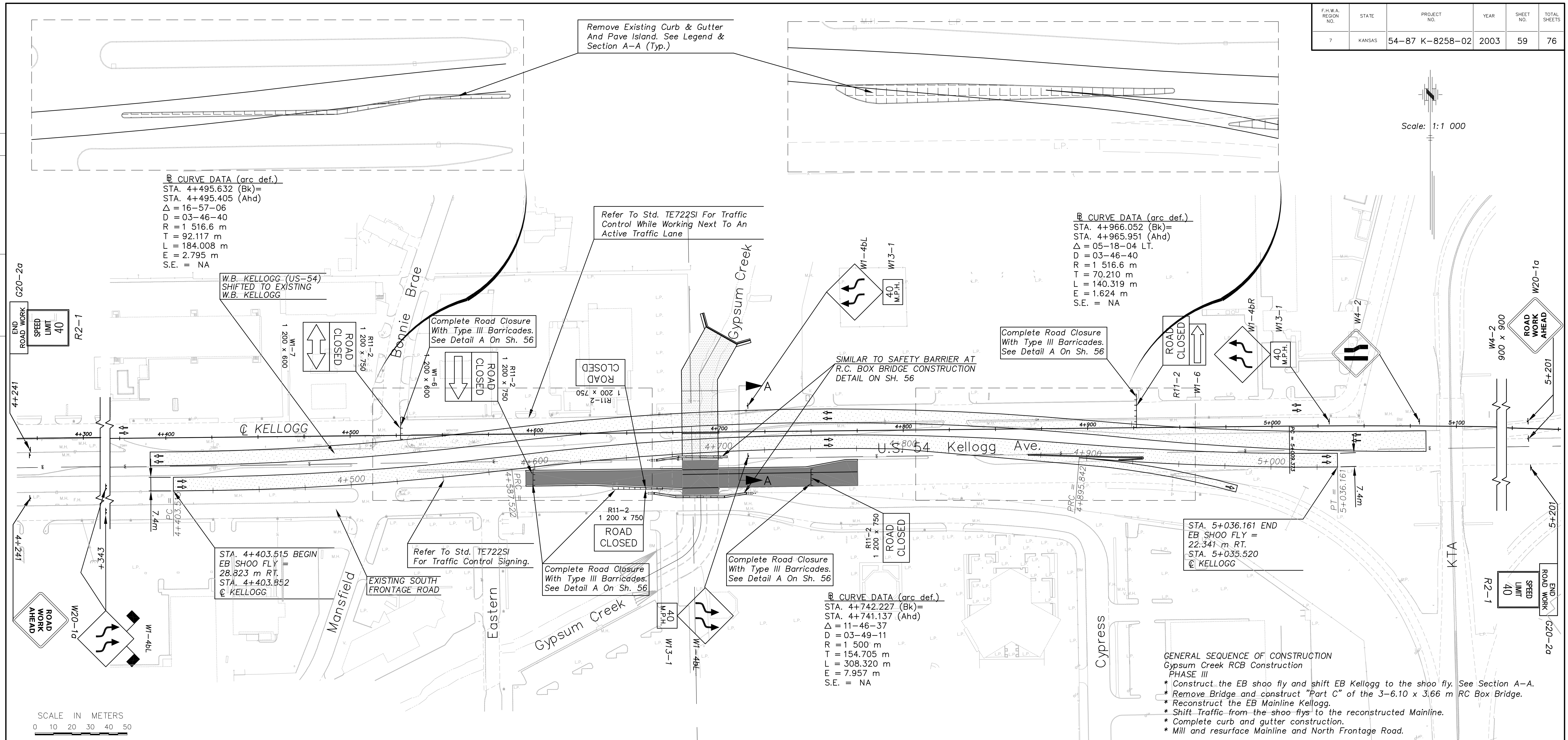


F.H.W.A. REGION NO.	STATE	PROJECT NO.	YEAR	SHEET NO.	TOTAL SHEETS
7	KANSAS	54-87 K-8258-02	2003	59	76

Scale: 1:1 000

BY	DATE
REFERENCE NOTED	CHECKED



**Ⓢ CURVE DATA (arc def.)**  
 STA. 4+966.052 (Bk)=  
 STA. 4+965.951 (Ahd)  
 Δ = 05-18-04 LT.  
 D = 03-46-40  
 R = 1 516.6 m  
 T = 70.210 m  
 L = 140.319 m  
 E = 1.624 m  
 S.E. = NA

STA. 4+403.515 BEGIN  
 EB SHOO FLY =  
 28.323 m RT.  
 STA. 4+403.852  
 @ KELLOGG

STA. 5+036.161 END  
 EB SHOO FLY =  
 22.341 m RT.  
 STA. 5+035.520  
 @ KELLOGG

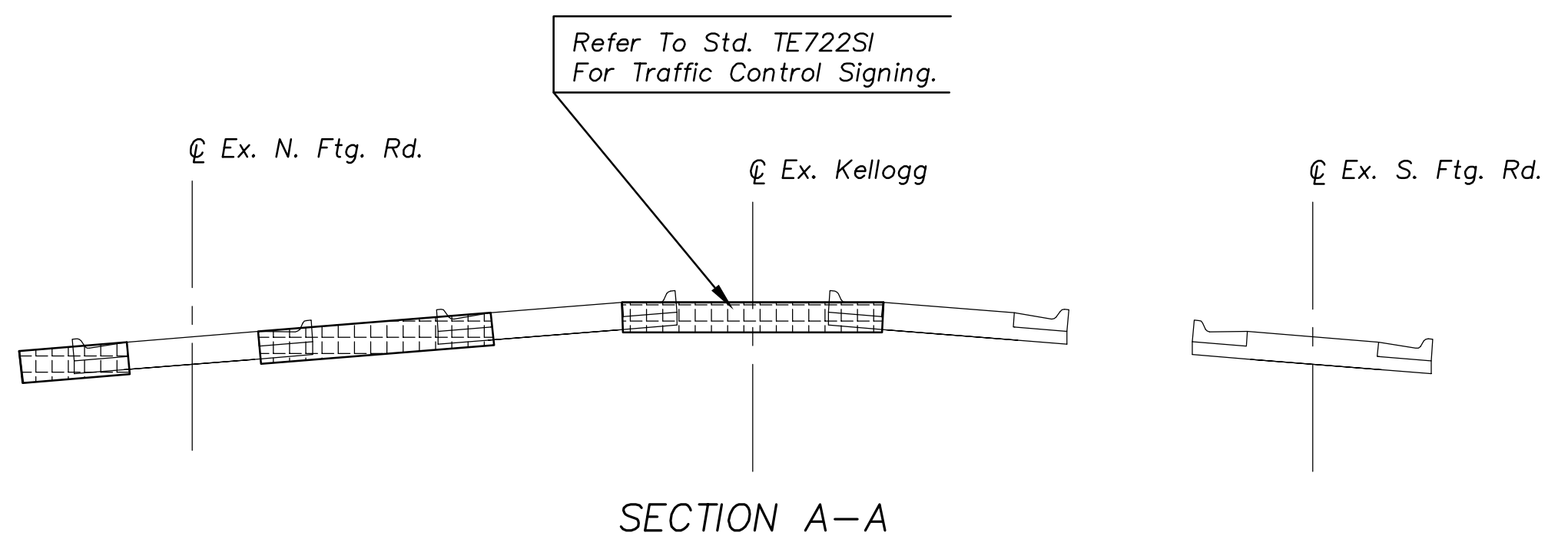
- GENERAL SEQUENCE OF CONSTRUCTION**  
 Gypsum Creek RCB Construction  
 PHASE III
- \* Construct the EB shoo fly and shift EB Kellogg to the shoo fly. See Section A-A.
  - \* Remove Bridge and construct "Part C" of the 3-6.10 x 3.66 m RC Box Bridge.
  - \* Reconstruct the EB Mainline Kellogg.
  - \* Shift Traffic from the shoo flies to the reconstructed Mainline.
  - \* Complete curb and gutter construction.
  - \* Mill and resurface Mainline and North Frontage Road.

**SIGN SUMMARY**

SIGN #	SIZE (mm)	QUANTITY THIS PHASE	QTY. RELOC. FROM PH II
R2-1	600 x 750	0	2
R11-2	1 200 x 750	0	6
W1-6	1 200 x 600	0	2
W1-7	1 200 x 600	1	0
W1-4bL	1 200 x 1 200	2	1
W1-4bR	1 200 x 1 200	2	1
W13-1	600 x 600	0	2
W4-2	900 x 900	0	1
W20-1a	750 x 750	0	3
G20-2a	1 200 x 600	0	2

**LEGEND**

- NEW CONSTRUCTION
- PREVIOUS CONSTRUCTION
- TRAFFIC FLOW
- TEMPORARY CONSTRUCTION (PHASE 1-STAGE 2)
- REMOVE CURBS AND PLACE PLANT MIX BITUMINOUS MIXTURE-COMMERCIAL-GRADE (225 mm Thick)
- TYPE III BARRICADE



SECTION A-A

SCALE IN METERS  
 0 10 20 30 40 50

Drawn by: [Blank]  
 File: [Blank]  
 Plotted: [Blank]  
 SCALE: 1:1 000



KANSAS DEPARTMENT OF TRANSPORTATION  
**TRAFFIC CONTROL**  
**GYPSUM CREEK RCB CONSTRUCTION**  
**PHASE III**  
 City Of Wichita  
 Sedgwick, Co.