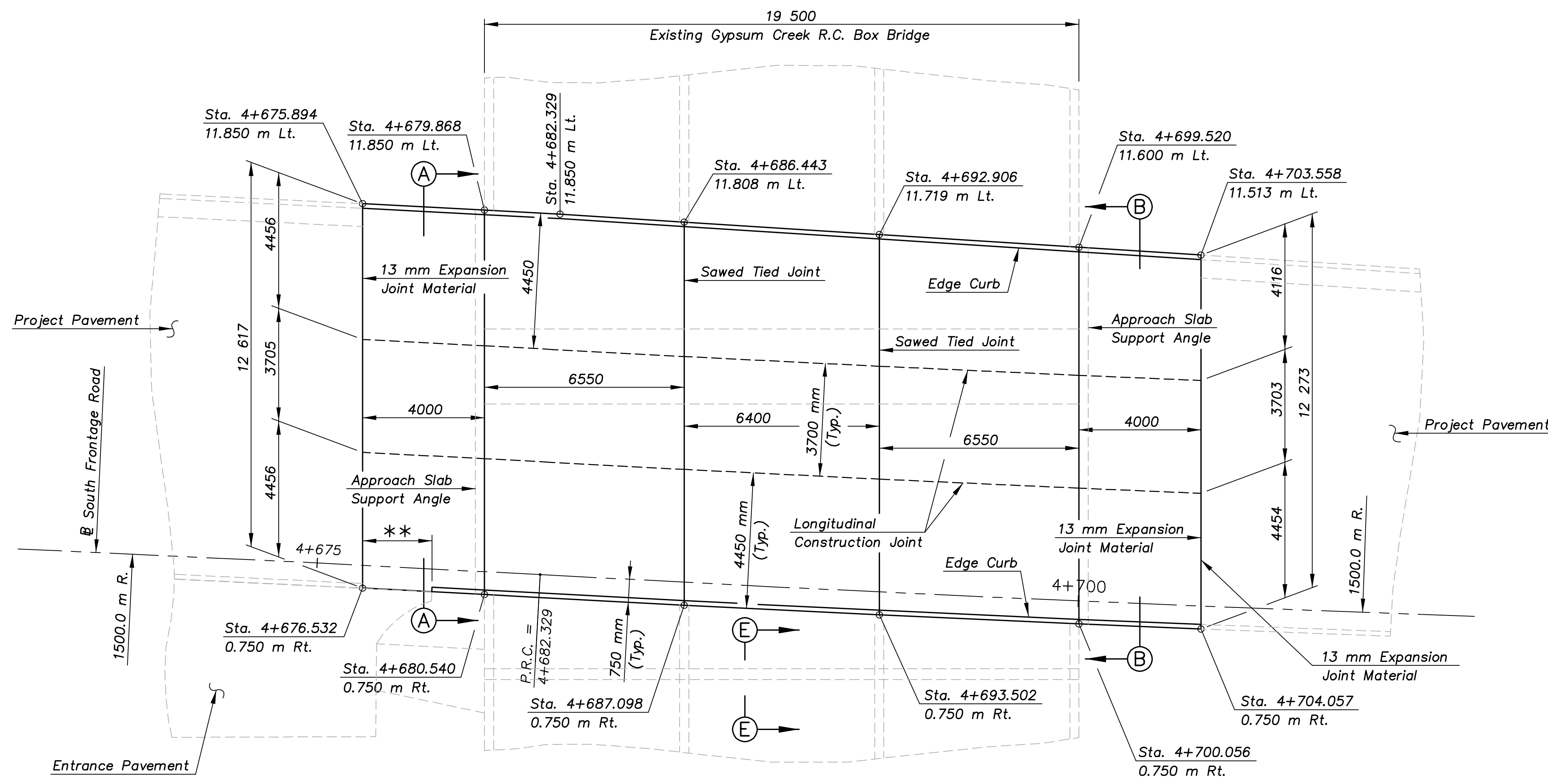


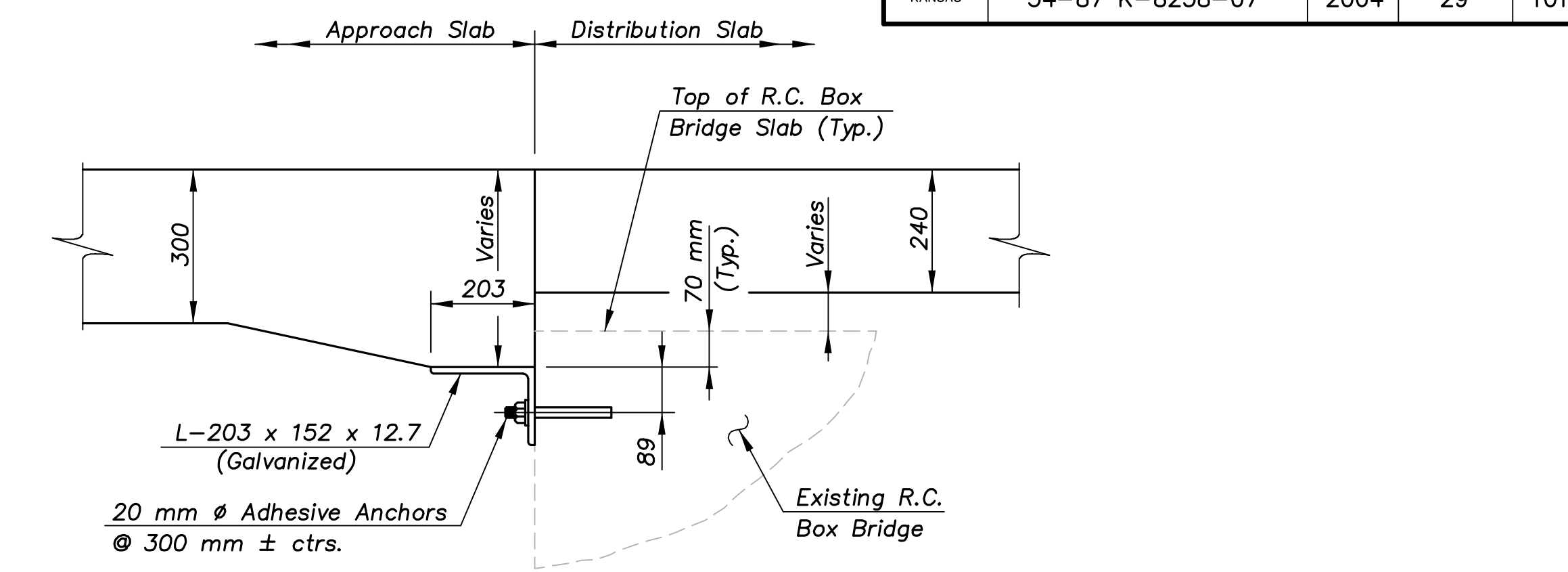
E.F. INDICATES EACH FACE.
N.F. INDICATES NEAR FACE.
F.F. INDICATES FAR FACE.

STATE	PROJECT NO.	YEAR	SHEET NO.	TOTAL SHEETS
KANSAS	54-87 K-8258-07	2004	29	101

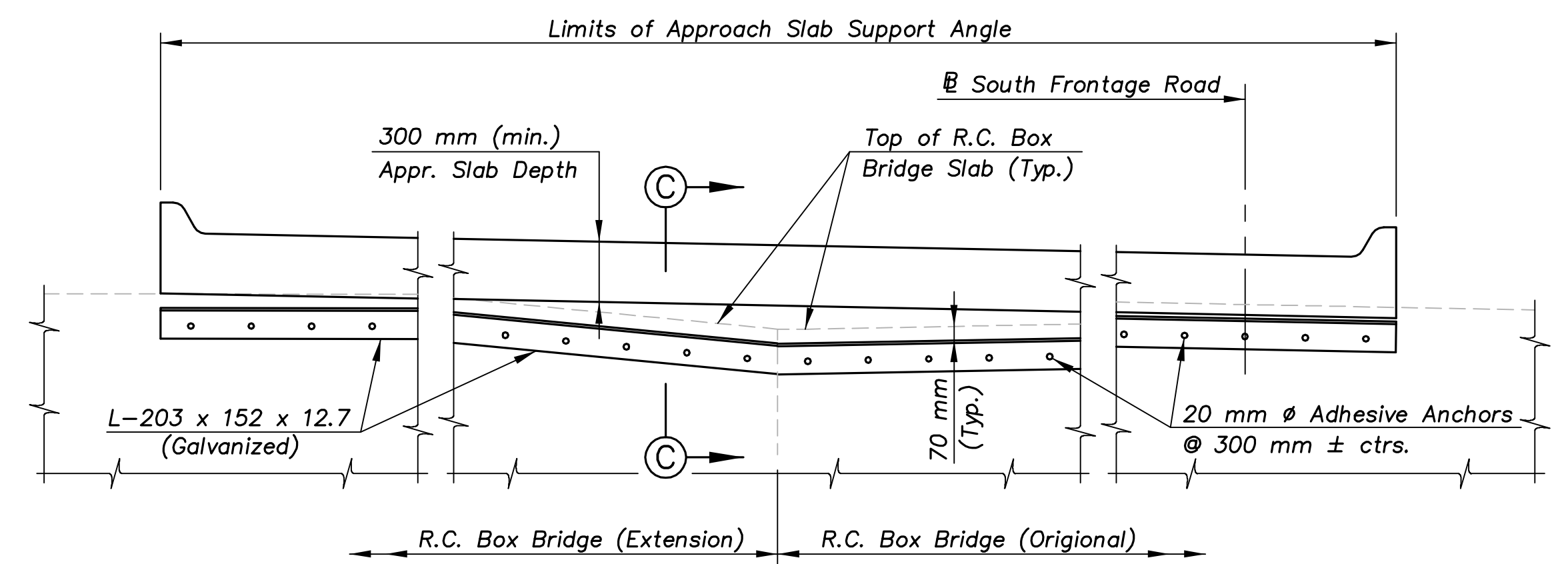


APPROACH & DISTRIBUTION SLAB LAYOUT AT R.C. BOX BRIDGE

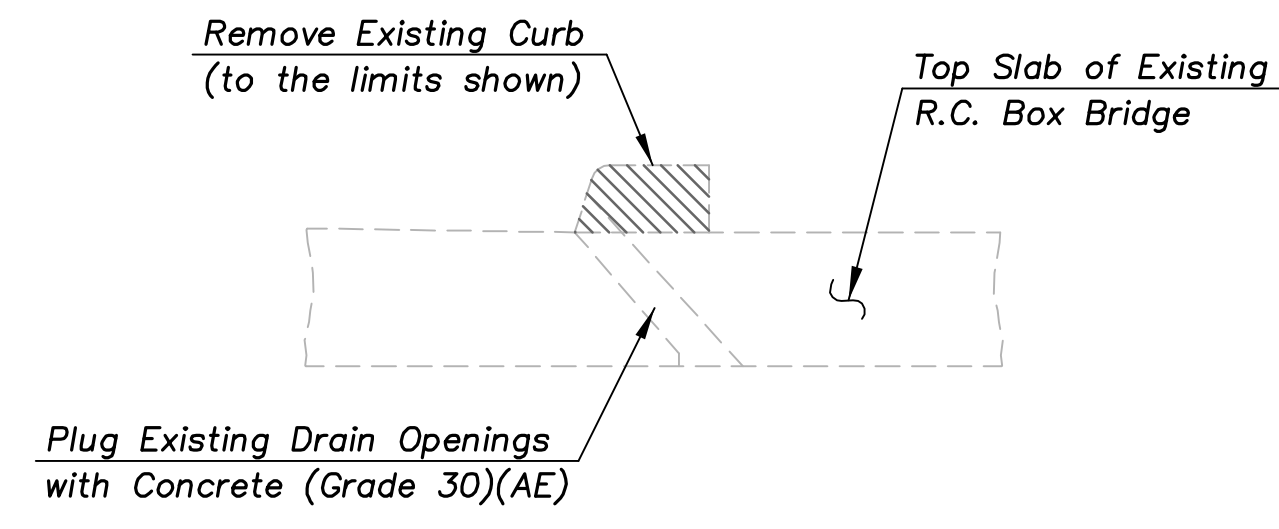
** NOTE: Transition Edge Curb to match the Standard Entrance Pavement details.



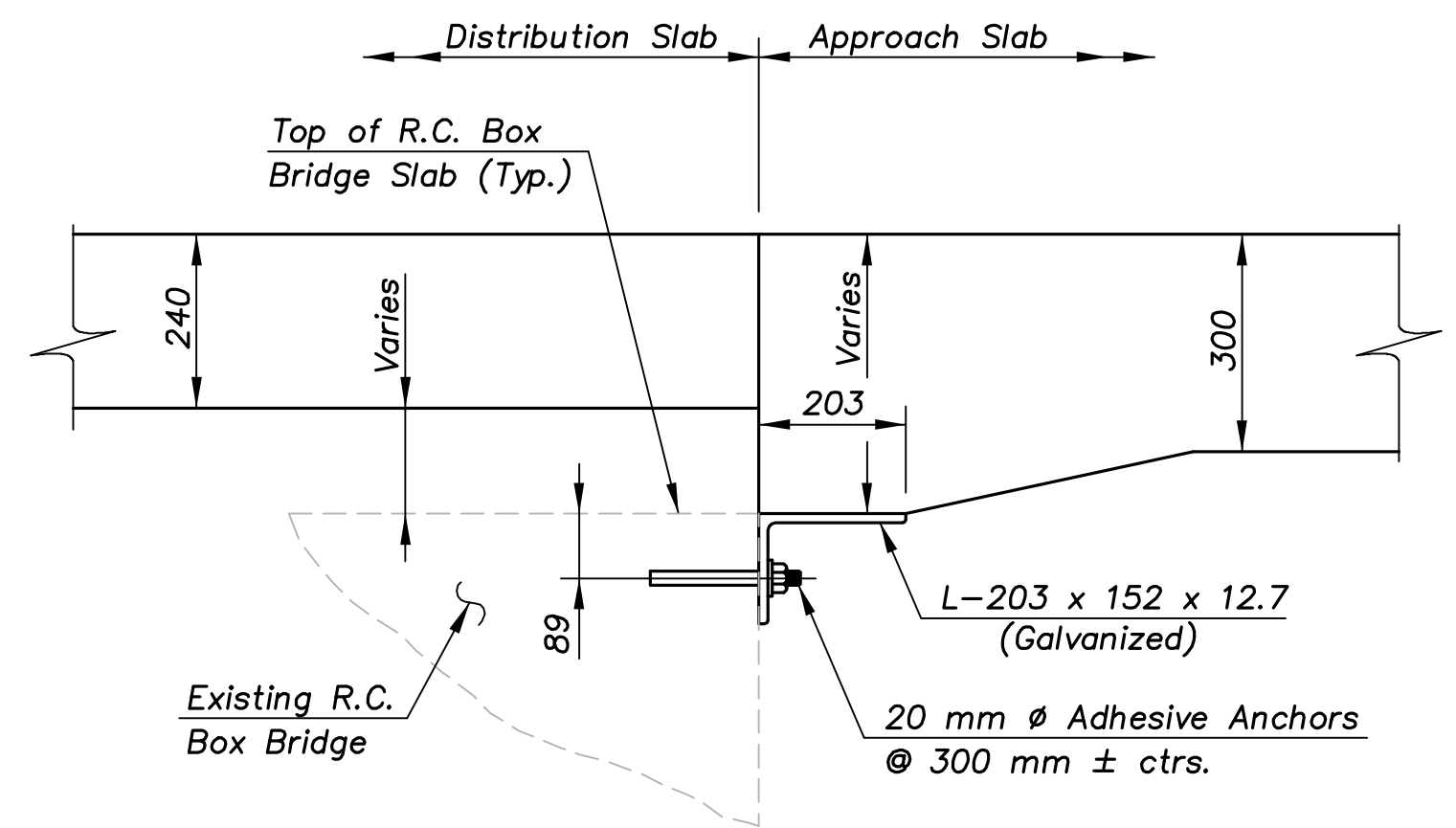
SECTION C-C



SECTION A-A



SECTION E-E



SECTION D-D

NOTE: QUANTITIES SHOWN ARE FOR INFORMATION ONLY THE CONTRACT WILL BE BASED ON A LUMP SUM BID AS NOTED IN THE PROJECT SPECIAL PROVISIONS.

GENERAL NOTES

Special Concrete Bridge Approach shall be paid for as square meters of Concrete Pavement (300 mm Uniform)(AE) and includes all work and materials required to construct the Approach Slab as shown.

Special Concrete Distribution Slab shall be paid for as square meters of Concrete Pavement (240 mm Uniform)(AE) and includes all work and materials required to construct the Distribution Slab as shown.

Unit Stresses:
Concrete (Grade 30)(AE) $f'c = 30$ MPa
Reinforcing Steel (Grade 420) $fy = 420$ MPa

The clearance from the face of Concrete to Reinforcing Steel shall be 50 mm, except as shown on the plans. All formed joints shall be edged with a 6 mm radius edging tool for the length of the joint.

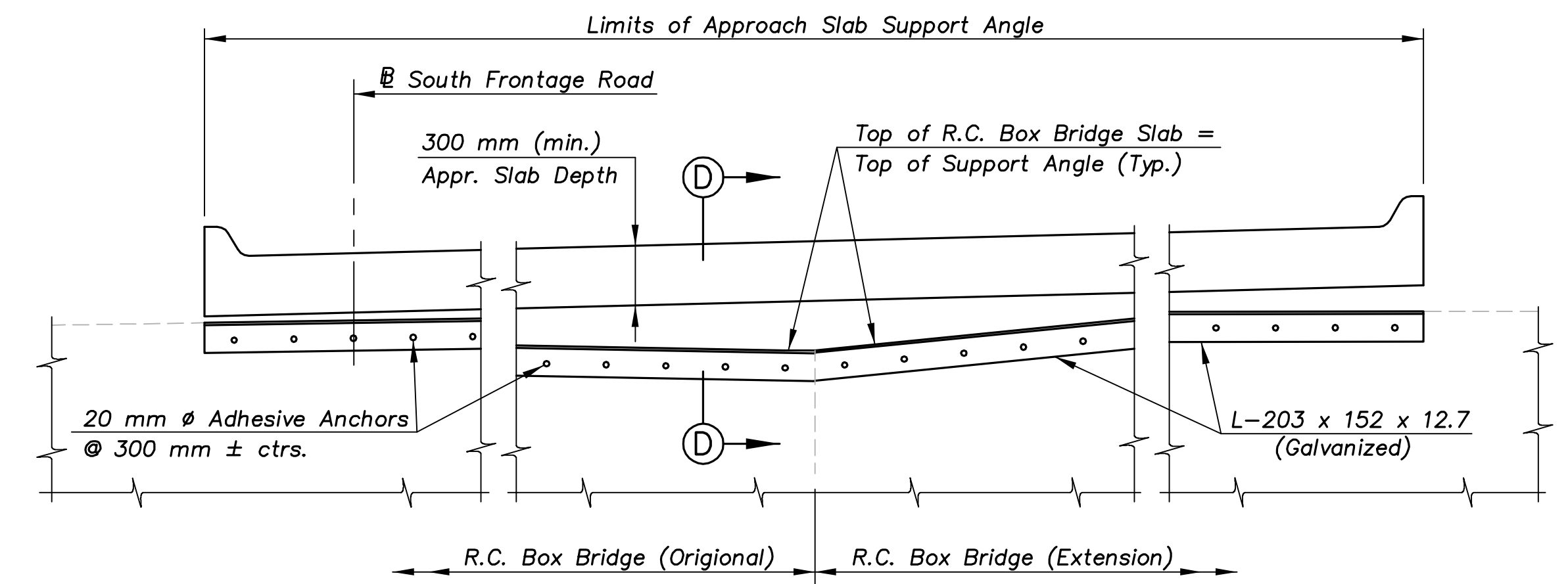
All dimensions relative to the placement of Reinforcing Steel Bars are to the centerline of bars unless otherwise noted. All Reinforcing Steel shall conform to the requirements of A615M-96, Grade 420. All Reinforcing Steel shall be coated with Epoxy as set forth in the KDOT Standard Specifications, 1990 Edition. All bar supports shall be coated.

All work and materials required for installation of Approach Slab Support Angles shall be Subsidiary to the bid item Concrete Pavement (300 mm Uniform)(AE).

Adhesive anchors shall consist of an all thread anchor rod, nut, washer and an adhesive capsule. The rod, nut and washer shall be coated in accordance with the weight of coating requirements of ASTM A153 and shall conform to ASTM A36/36M.

All Structural Steel shall be coated in accordance with the weight coating requirements of ASTM A153 and shall conform to ASTM A36/36M.

All work and materials required for the installation of 13 mm Expansion Joint Material, removal of Existing Curb and the Plugging of Drain Openings shall be Subsidiary to the bid item Concrete Pavement (300 mm Uniform)(AE).



SECTION B-B

SUMMARY OF QUANTITIES				
Item	Units	West End	East End	Totals
Concrete Pavement (300 mm)(AE)	sq m	50.5	49.3	99.8
Concrete Pavement (240 mm)(AE)	sq m			244.2

KANSAS DEPARTMENT OF TRANSPORTATION

SPECIAL CONCRETE APPROACH AND DISTRIBUTION PAVEMENT

SOUTH FRONTAGE ROAD OVER GYPSUM CREEK

Proj. No. 54-87 K-8258-07 SEDGWICK COUNTY

DESIGNED R.S.C. SCALE
 DETAILED T.R.G. DATE
 QUANTITIES T.R.G. SHEET 1 OF 5

1:100
MISC-DETAILS\GYPSUM-APPR