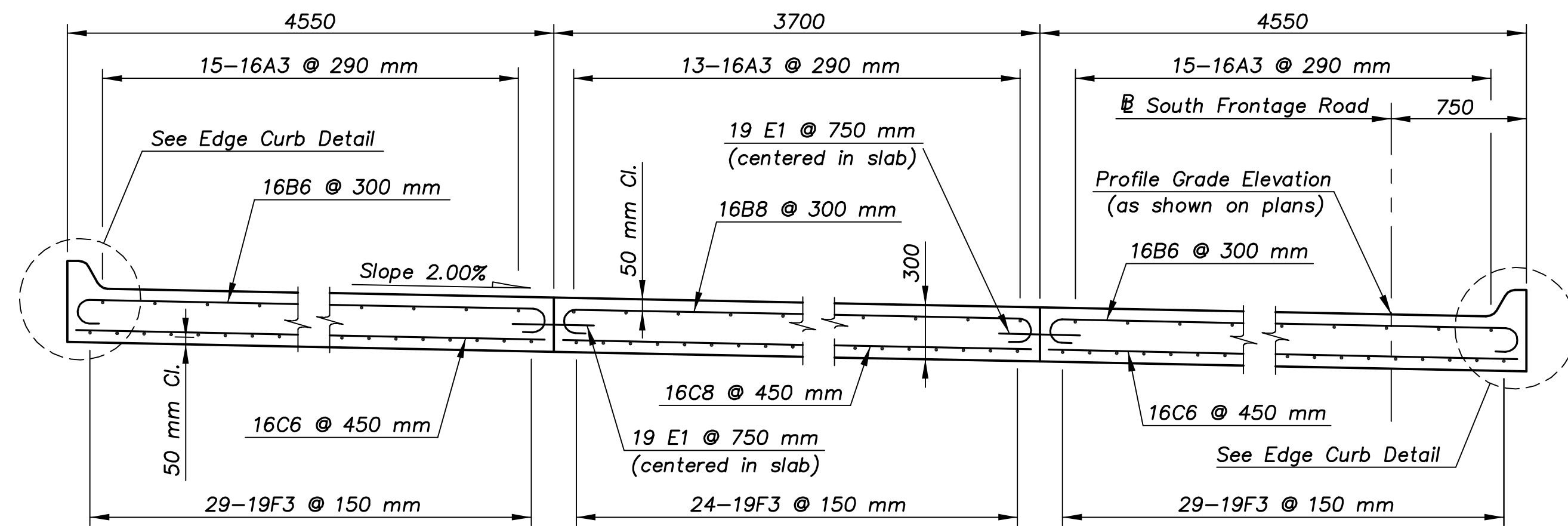
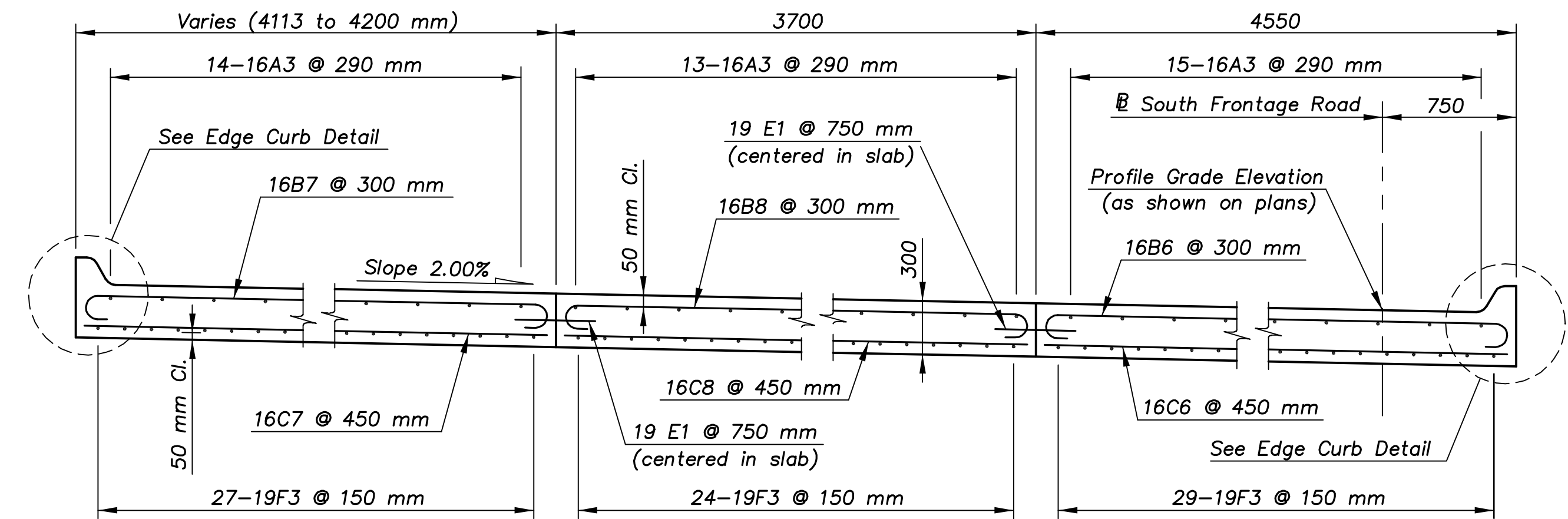


E.F. INDICATES EACH FACE.
N.F. INDICATES NEAR FACE.
F.F. INDICATES FAR FACE.

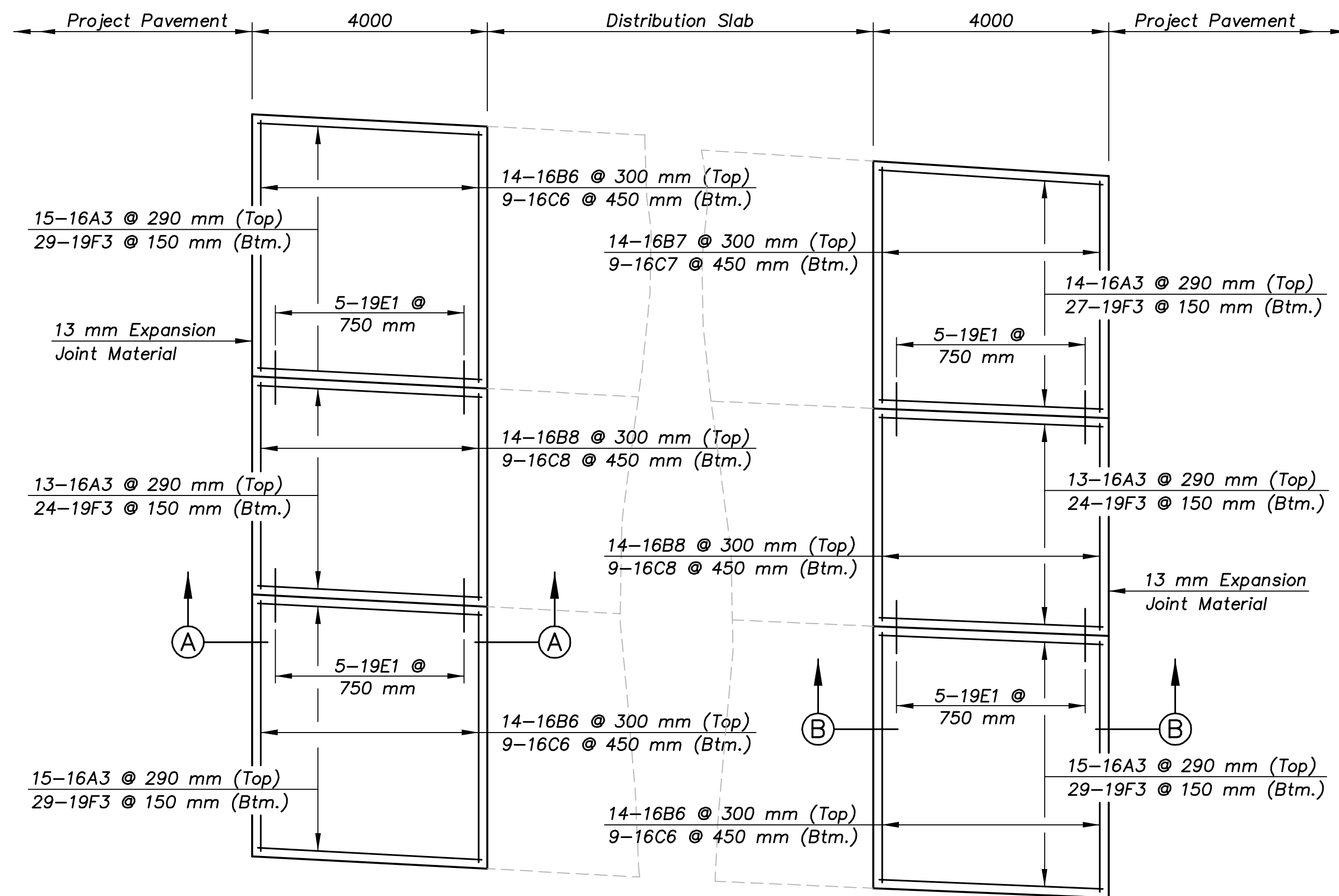
STATE	PROJECT NO.	YEAR	SHEET NO.	TOTAL SHEETS
KANSAS	54-87 K-8258-07	2004	30	101



PARTIAL TRANSVERSE SECTION AT WEST END
(Normal to Baseline, Looking Ahead Station)



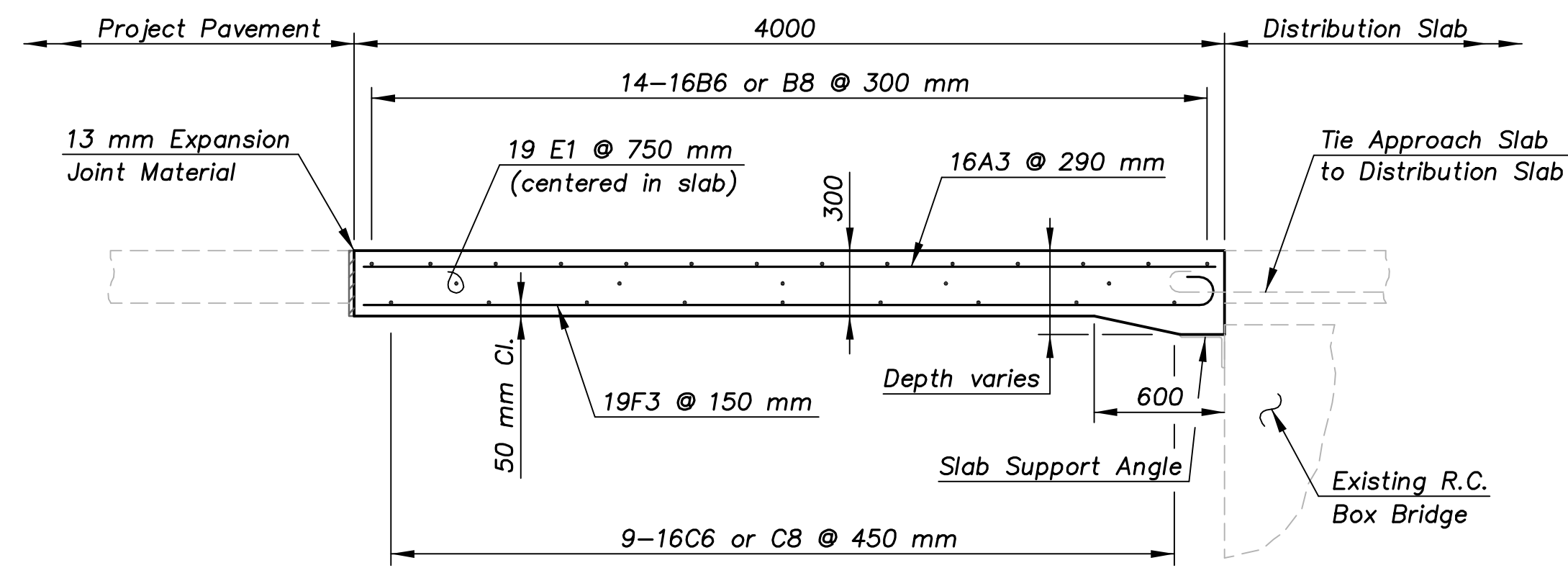
PARTIAL TRANSVERSE SECTION AT EAST END
(Normal to Baseline, Looking Ahead Station)



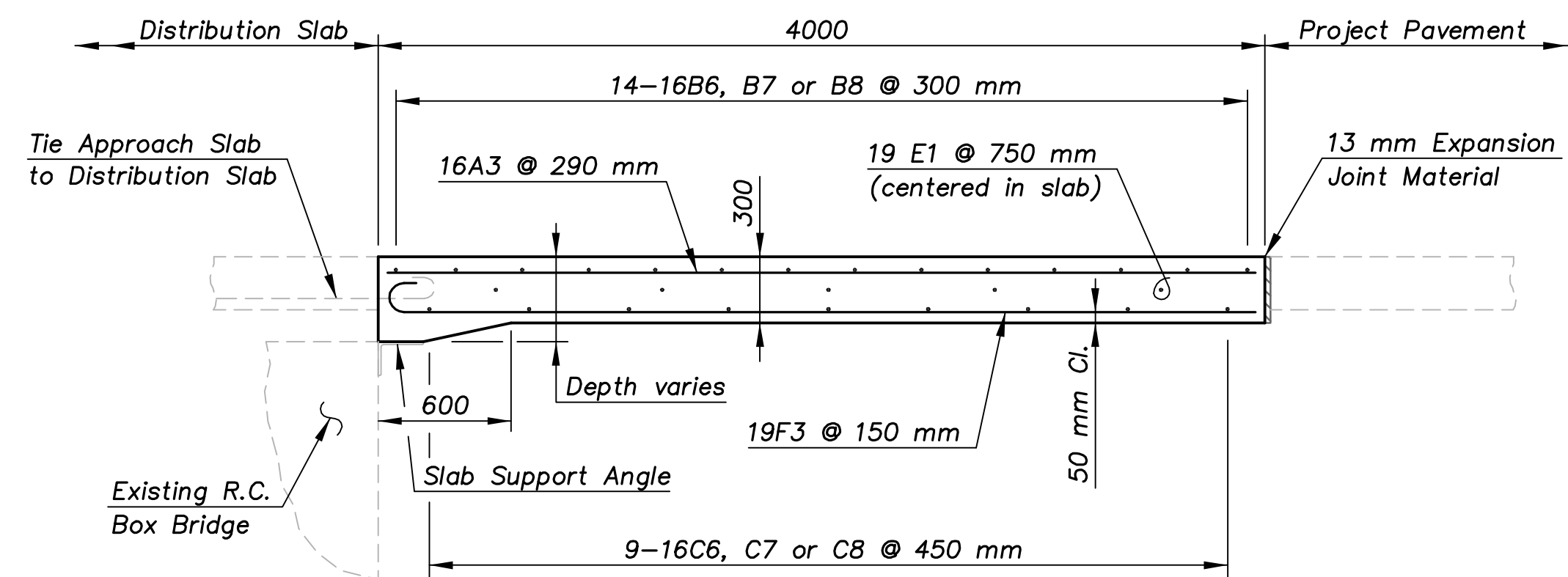
SLAB AT WEST END

SLAB AT EAST END

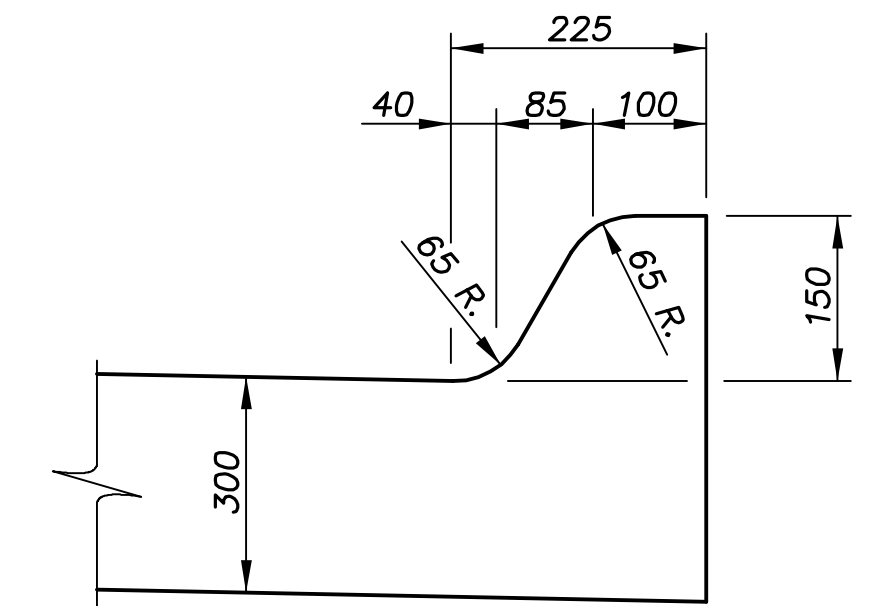
PLAN SHOWING APPROACH SLAB REINFORCEMENT



SECTION A-A



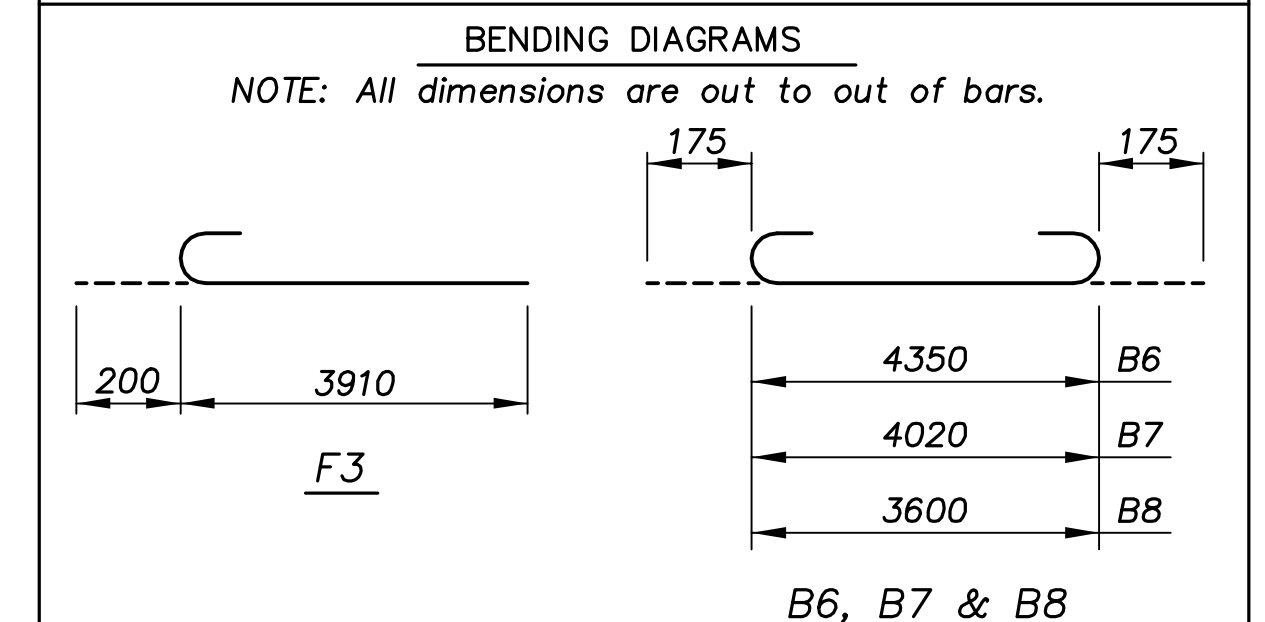
SECTION B-B



EDGE CURB DETAIL

BILL OF REINFORCING STEEL							
STRAIGHT BARS				BENT BARS			
MARK	SIZE	NO.	LENGTH	MARK	SIZE	NO.	LENGTH
E1	19	20	900	F3	19	162	4110
A3	16	85	3900	B6	16	42	4700
C6	16	27	4350	B7	16	14	4370
C7	16	9	4020	B8	16	28	3950
C8	16	18	3600				

"FOR INFORMATION ONLY"
Reinforcing Steel (Grade 420) (Epoxy Coated) 2950 kg



KANSAS DEPARTMENT OF TRANSPORTATION

SPECIAL CONCRETE
APPROACH PAVEMENT
SOUTH FRONTAGE ROAD OVER GYPSUM CREEK



DESIGNED R.S.C. SCALE
DETAILED T.R.G. DATE
QUANTITIES T.R.G. SHEET 2 OF 5

Proj. No. 54-87 K-8258-07 SEDGWICK COUNTY

1:100
MISC-DETAILS\GYPSUM-APPR