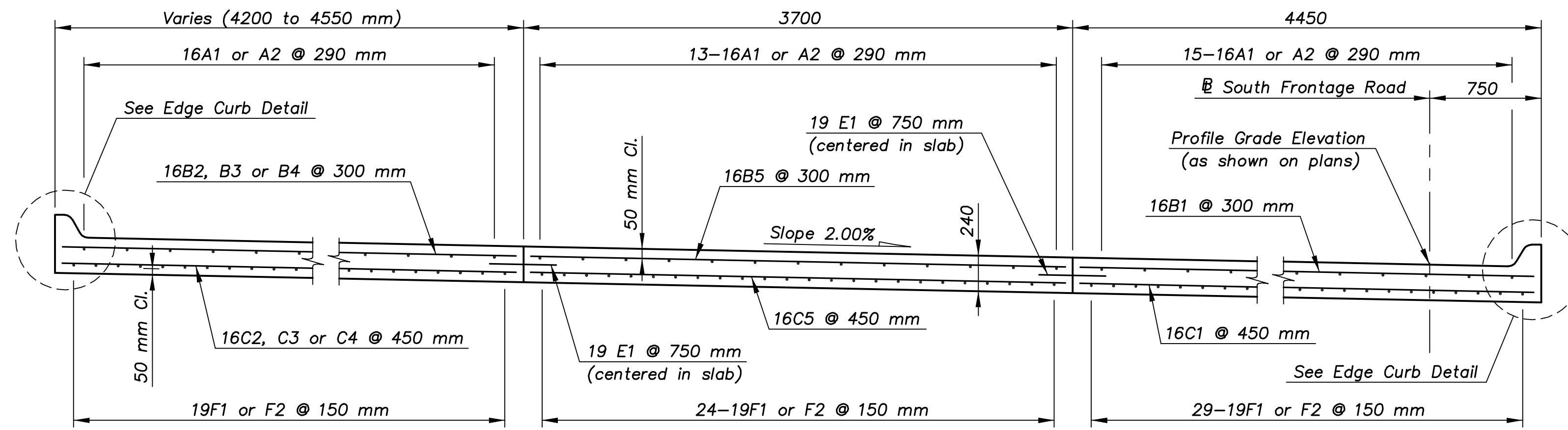
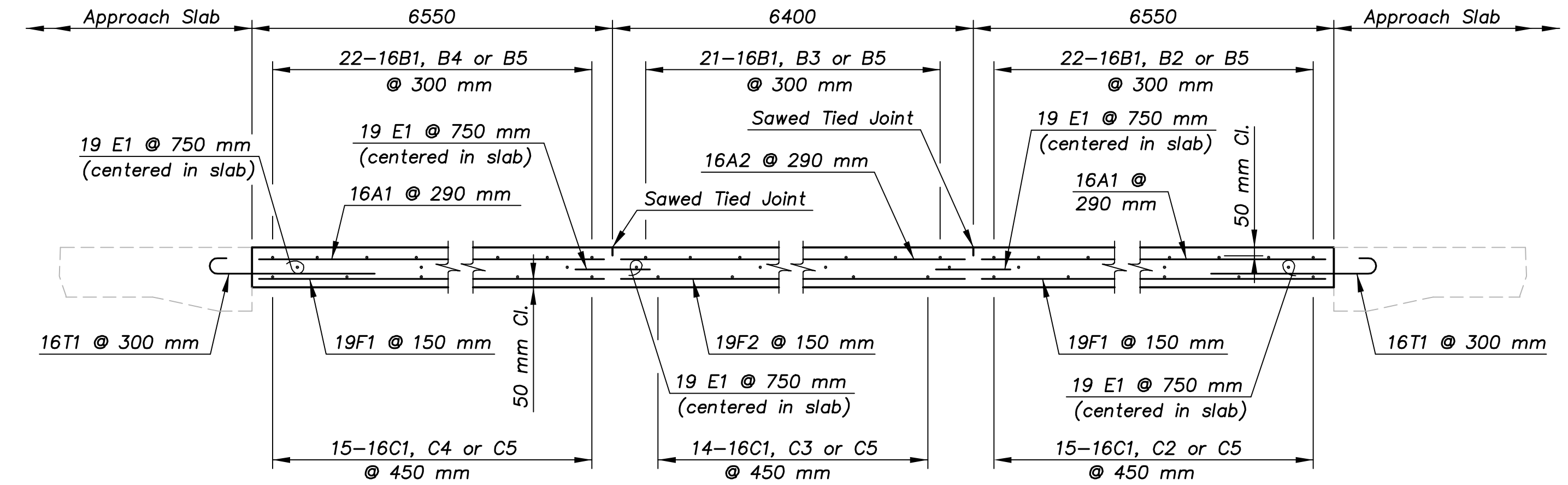


E.F. INDICATES EACH FACE.
 N.F. INDICATES NEAR FACE.
 F.F. INDICATES FAR FACE.

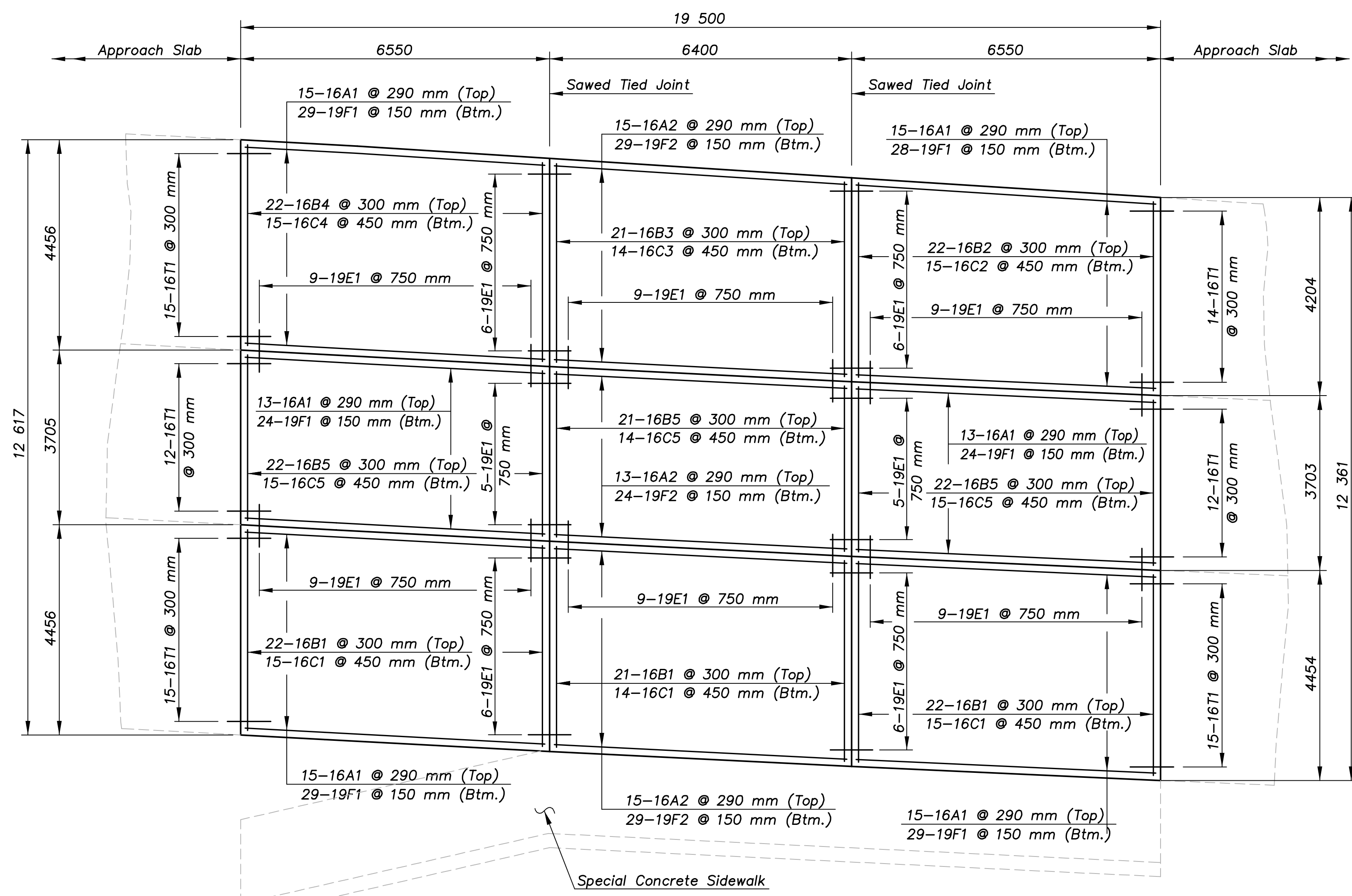
STATE	PROJECT NO.	YEAR	SHEET NO.	TOTAL SHEETS
KANSAS	54-87 K-8258-07	2004	31	101



PARTIAL TRANSVERSE SECTION
 (Normal to Baseline, Looking Ahead Station)



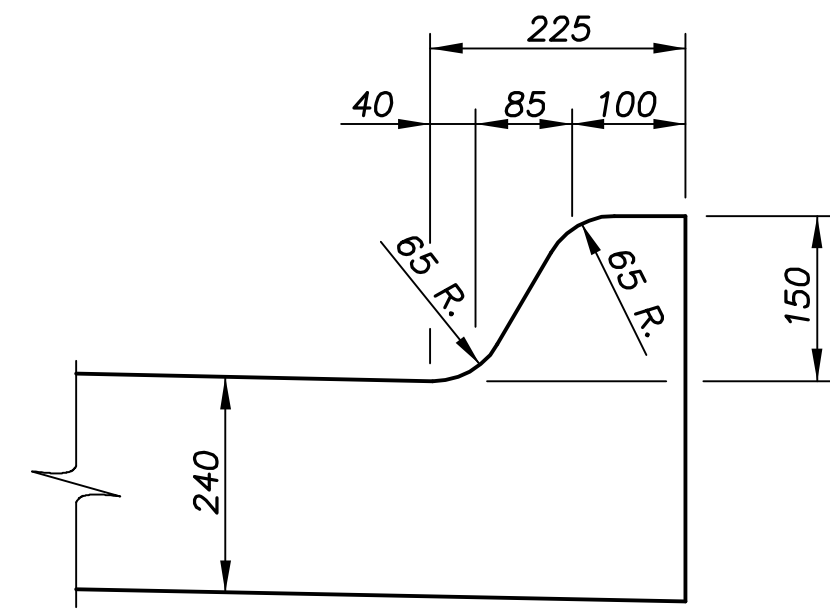
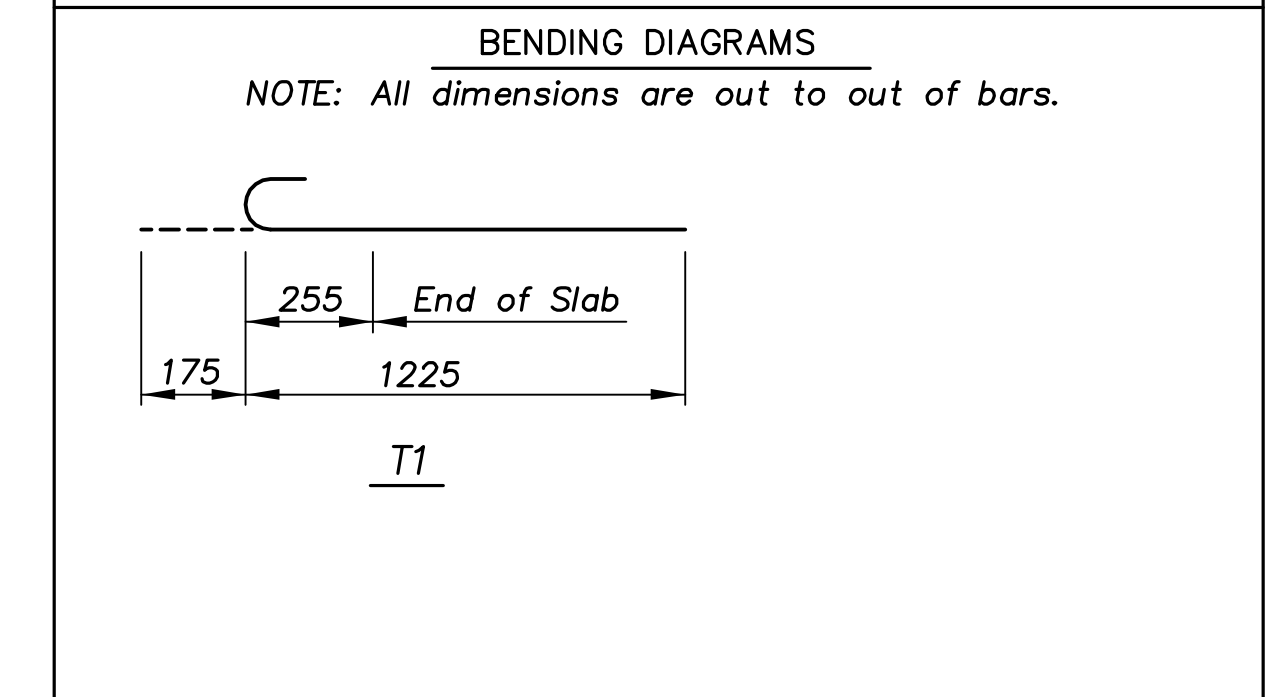
PARTIAL LONGITUDINAL SECTION



PLAN SHOWING DISTRIBUTION SLAB REINFORCEMENT

BILL OF REINFORCING STEEL							
STRAIGHT BARS				BENT BARS			
MARK	SIZE	NO.	LENGTH	MARK	SIZE	NO.	LENGTH
E1	19	88	900	T1	16	83	1400
F1	19	163	6450				
F2	19	82	6300				
A1	16	86	6450				
A2	16	43	6300				
B1	16	65	4350				
B2	16	22	4100				
B3	16	21	4220				
B4	16	22	4310				
B5	16	65	3600				
C1	16	44	4350				
C2	16	15	4100				
C3	16	14	4220				
C4	16	15	4310				
C5	16	44	3600				

"FOR INFORMATION ONLY"
 Reinforcing Steel (Grade 420) (Epoxy Coated) 7200 kg



EDGE CURB DETAIL

KANSAS DEPARTMENT OF TRANSPORTATION

SPECIAL CONCRETE DISTRIBUTION PAVEMENT
 SOUTH FRONTAGE ROAD OVER GYPSUM CREEK

Proj. No. 54-87 K-8258-07 SEDGWICK COUNTY

Cook, Flatt & Strobel
 ENGINEERS, P.A.

DESIGNED	R.S.C.	SCALE
DETAILED	T.R.G.	DATE
QUANTITIES	T.R.G.	SHEET 3 OF 5

1:100
 \MISC-DETAILS\GYPSUM-APPR