

E.F. INDICATES EACH FACE.
N.F. INDICATES NEAR FACE.
F.F. INDICATES FAR FACE.

STATE	PROJECT NO.	YEAR	SHEET NO.	TOTAL SHEETS
KANSAS	54-87 K-8258-07	2004	32	101

GENERAL NOTES

Special Concrete Sidewalk shall be paid for as cubic meters of Concrete (Grade 30)(AE) and Reinforcing Steel (Grade 420).

Unit Stresses:
Concrete (Grade 30)(AE) $f'_c = 30 \text{ MPa}$
Reinforcing Steel (Grade 420) $f_y = 420 \text{ MPa}$

The clearance from the face of Concrete to Reinforcing Steel shall be 50 mm, except as shown on the plans. All formed joints shall be edged with a 6 mm radius edging tool for the length of the joint.

All dimensions relative to the placement of Reinforcing Steel Bars are to the centerline of bars unless otherwise noted. All Reinforcing Steel shall conform to the requirements of A615M-96, Grade 420.

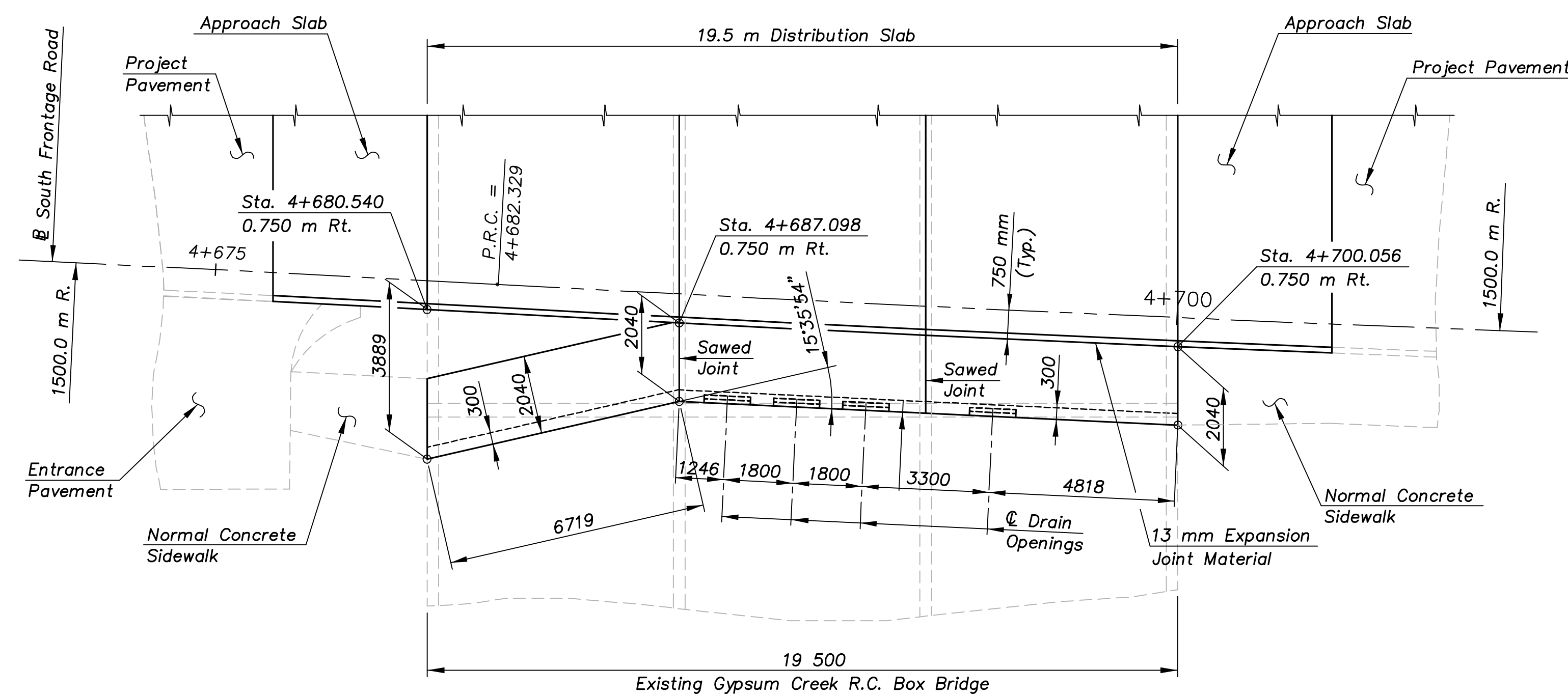
All existing concrete surfaces adjacent to the new concrete shall be thoroughly cleaned by brushing, and soaked with water immediately prior to placing the new concrete.

Drill and Grout the 13 S5 bars into the top slab of the existing box as shown on the plans. Grouting of bars shall meet the requirements of KDOT Standard Specifications. All work and materials necessary for this work shall be *Subsidiary* to the bid item "Reinforcing Steel Grade 420".

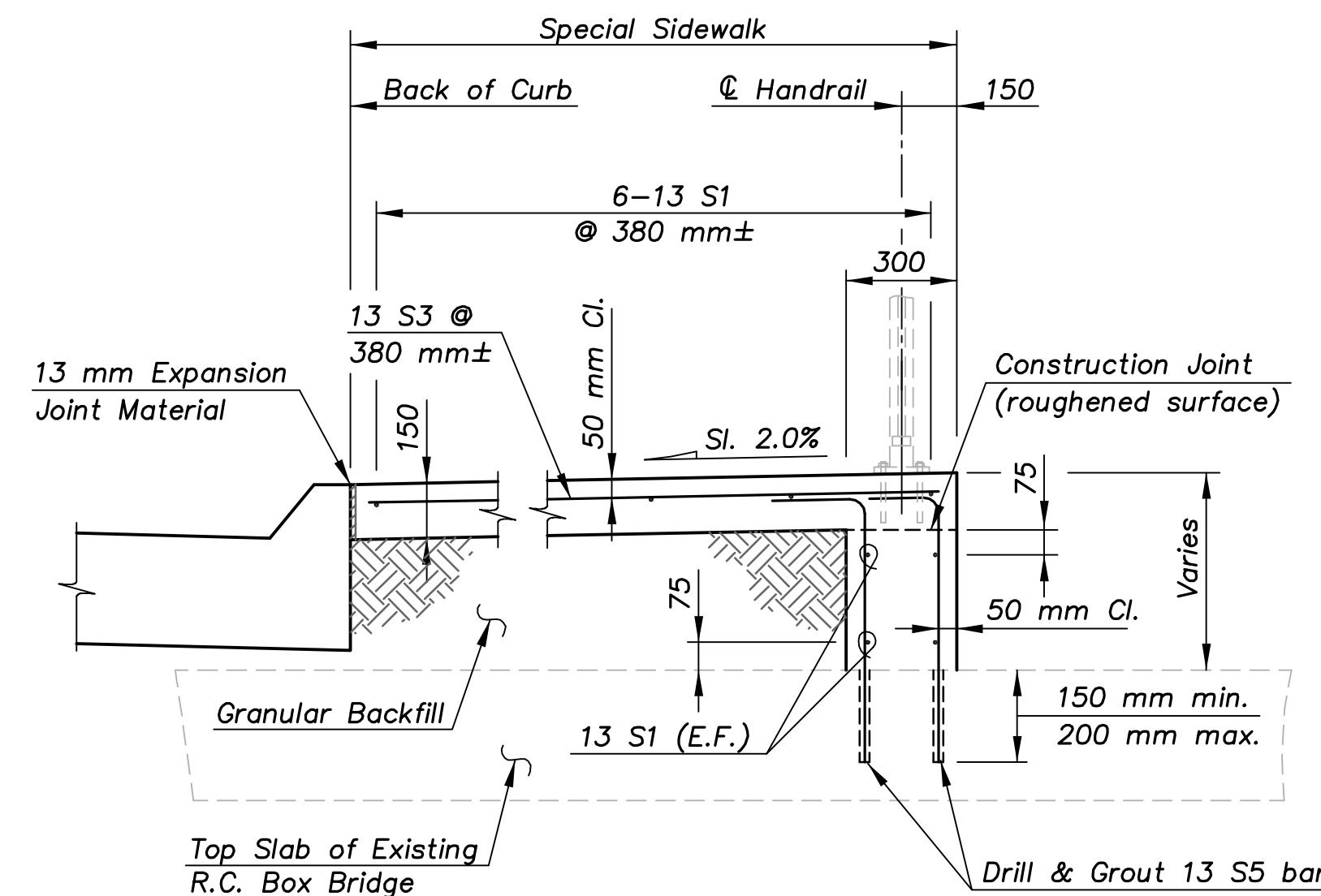
All work and materials required for providing drain openings in the top slab of the existing box shall be *Subsidiary* to the bid item Concrete (Grade 30)(AE).

The Storm Water Opening Castings shall be Neenah Foundry R-3264 Storm Water Curb Opening (Heavy Duty) or approved equal. All work and materials necessary for the installation of the Storm Water Opening Castings (four required) as shown shall be *Subsidiary* to the bid item Concrete (Grade 30)(AE).

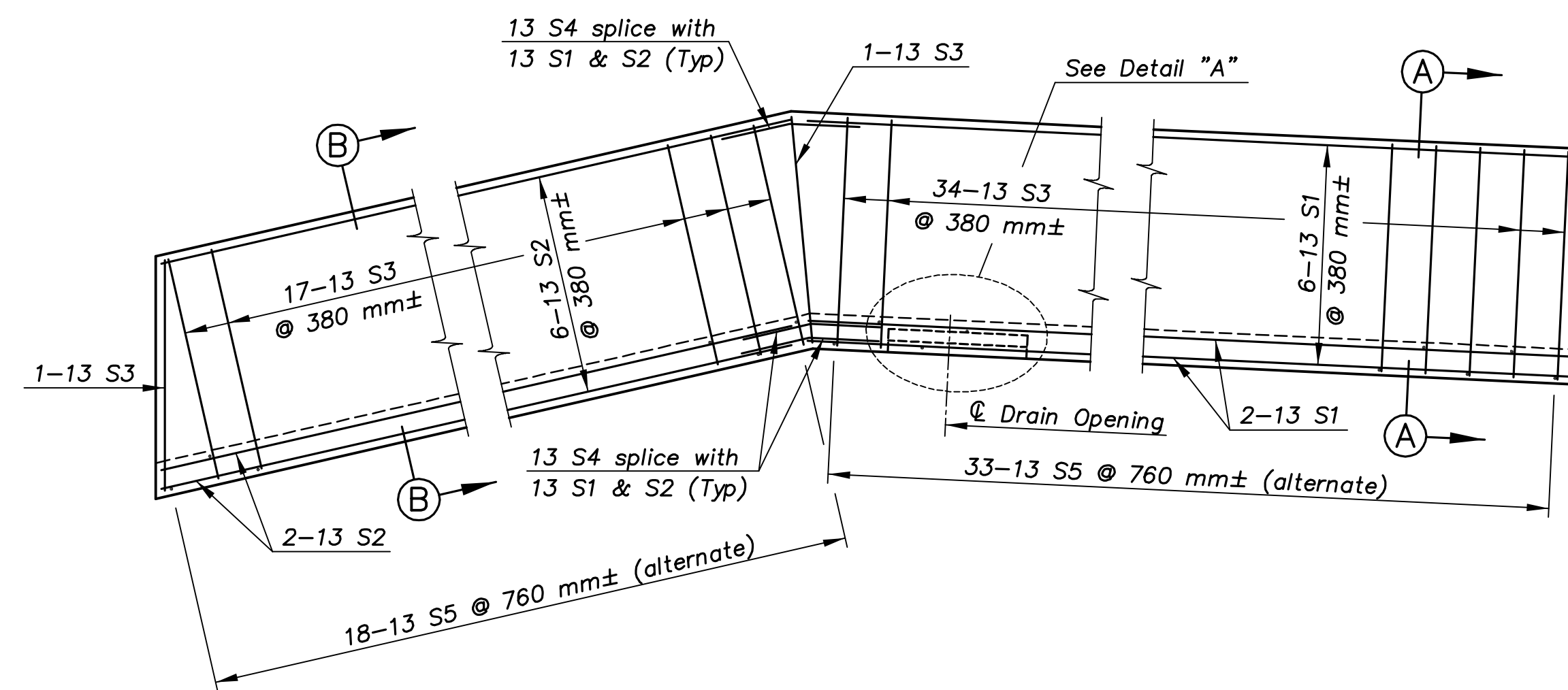
NOTE: QUANTITIES SHOWN ARE FOR INFORMATION ONLY THE CONTRACT WILL BASED ON A LUMP SUM BID AS NOTED IN THE PROJECT SPECIAL PROVISIONS.



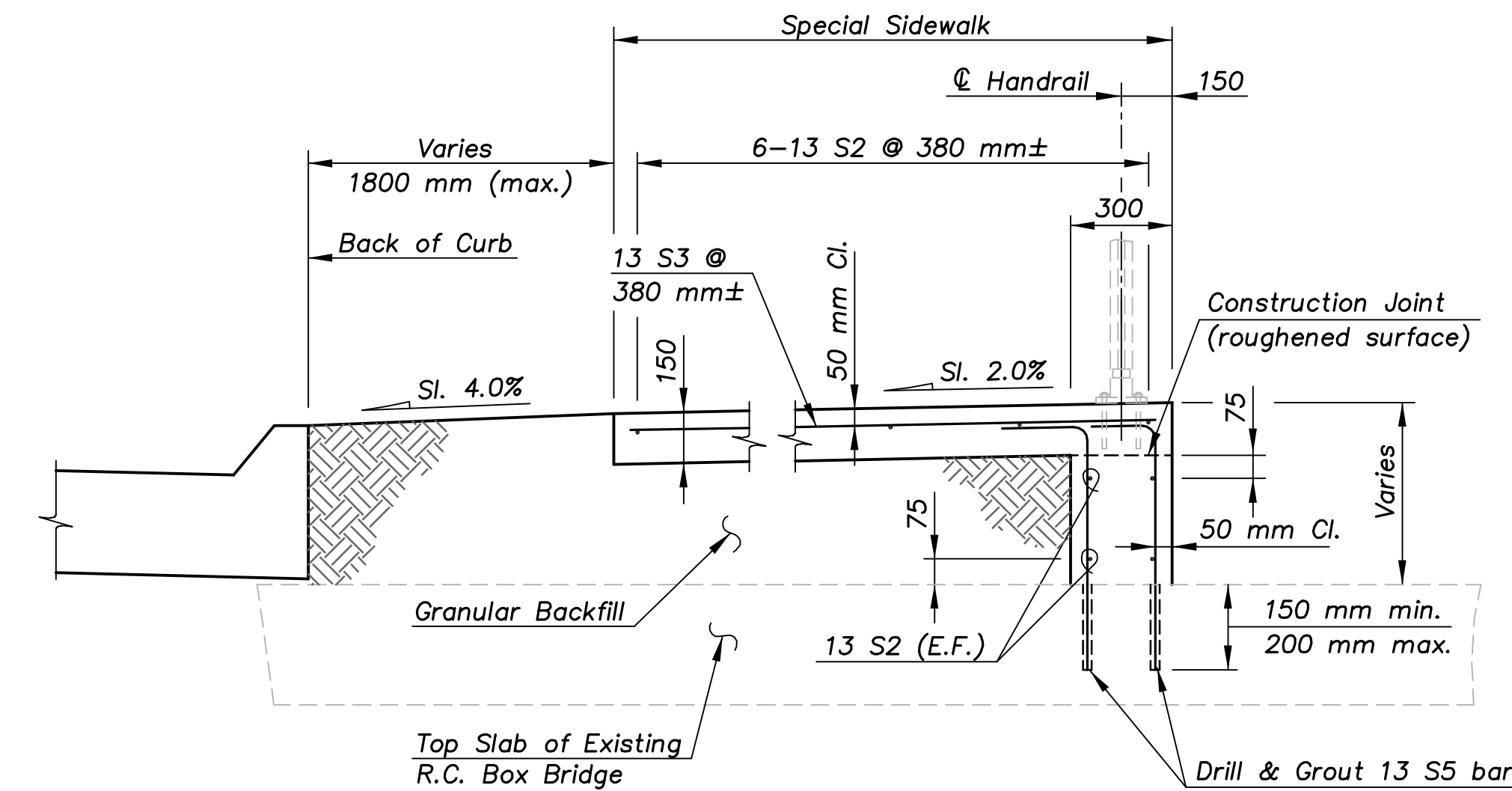
SPECIAL CONCRETE SIDEWALK LAYOUT AT R.C. BOX BRIDGE



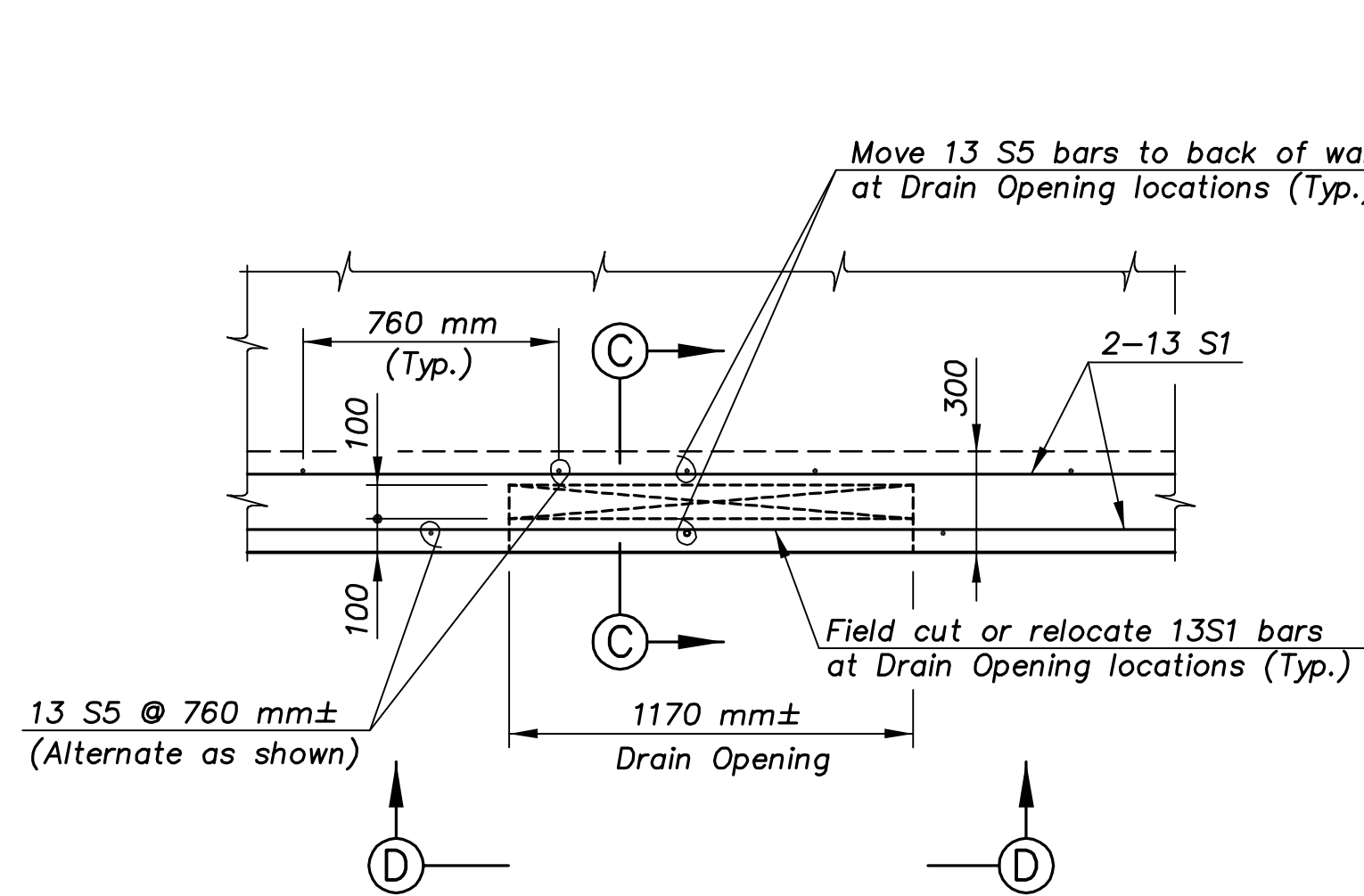
SECTION A-A



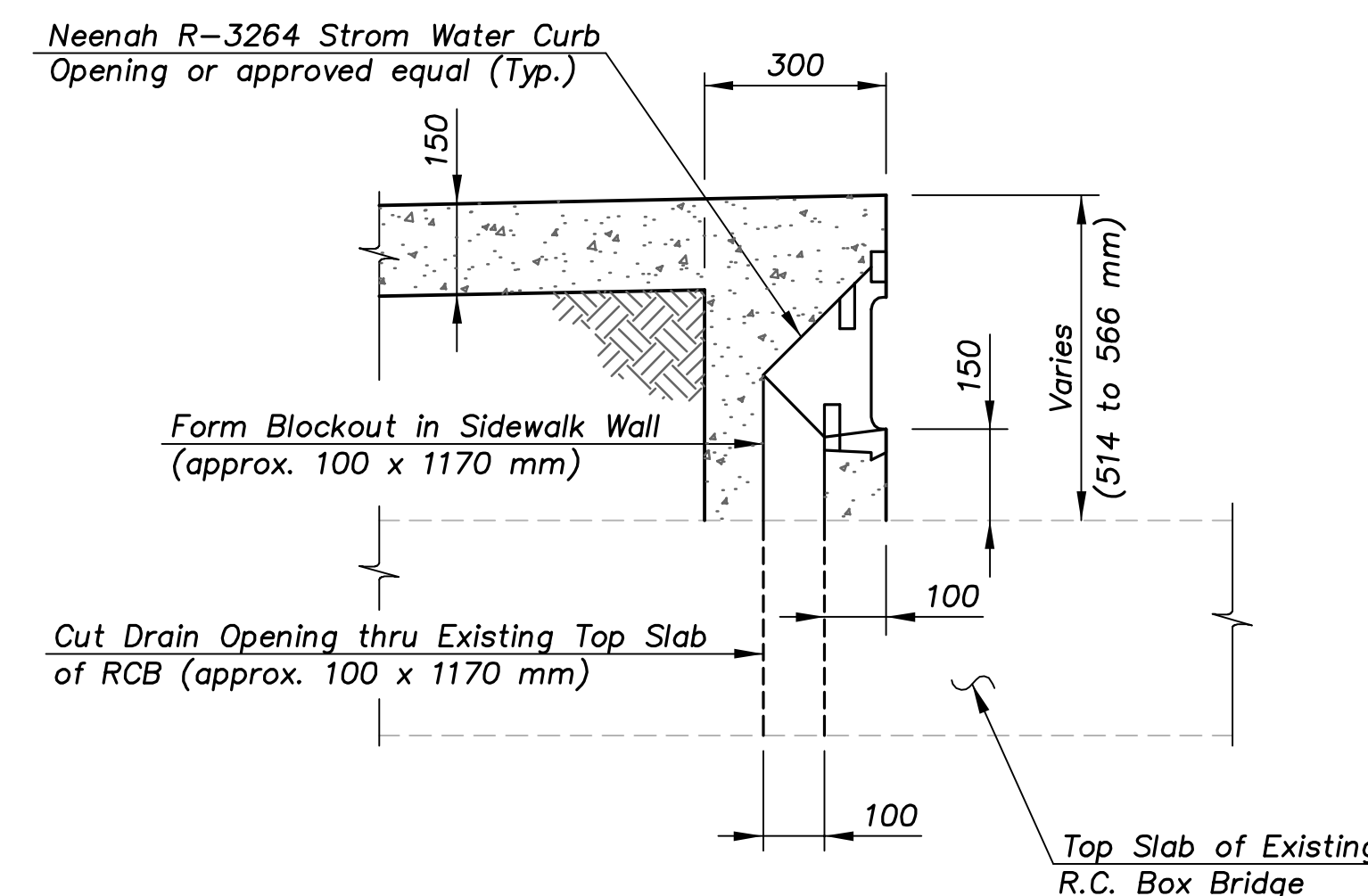
PARTIAL PLAN SHOWING SIDEWALK REINFORCING STEEL PLACEMENT



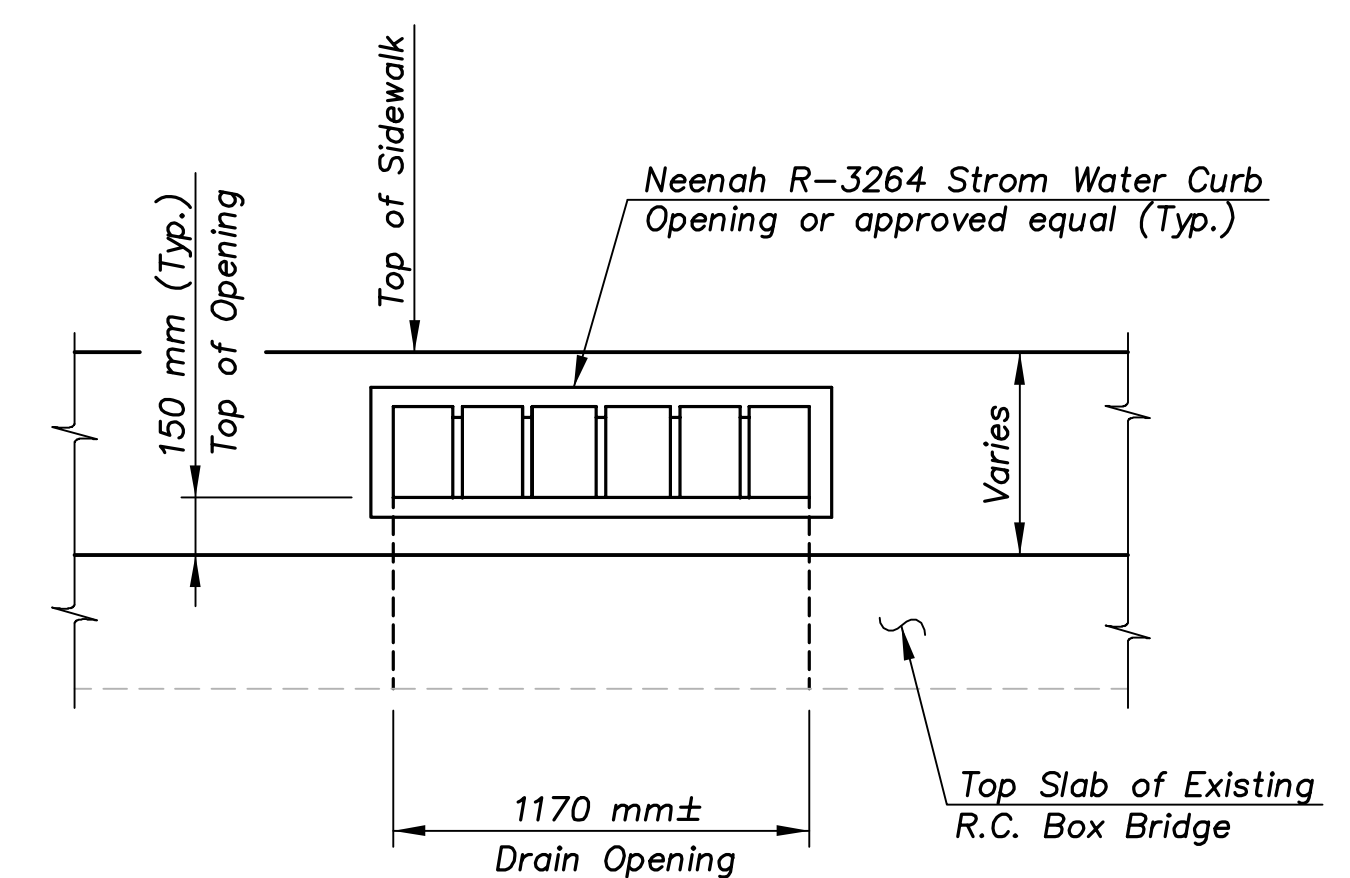
SECTION B-B



DETAIL "A"
(Typical each Drain Location)



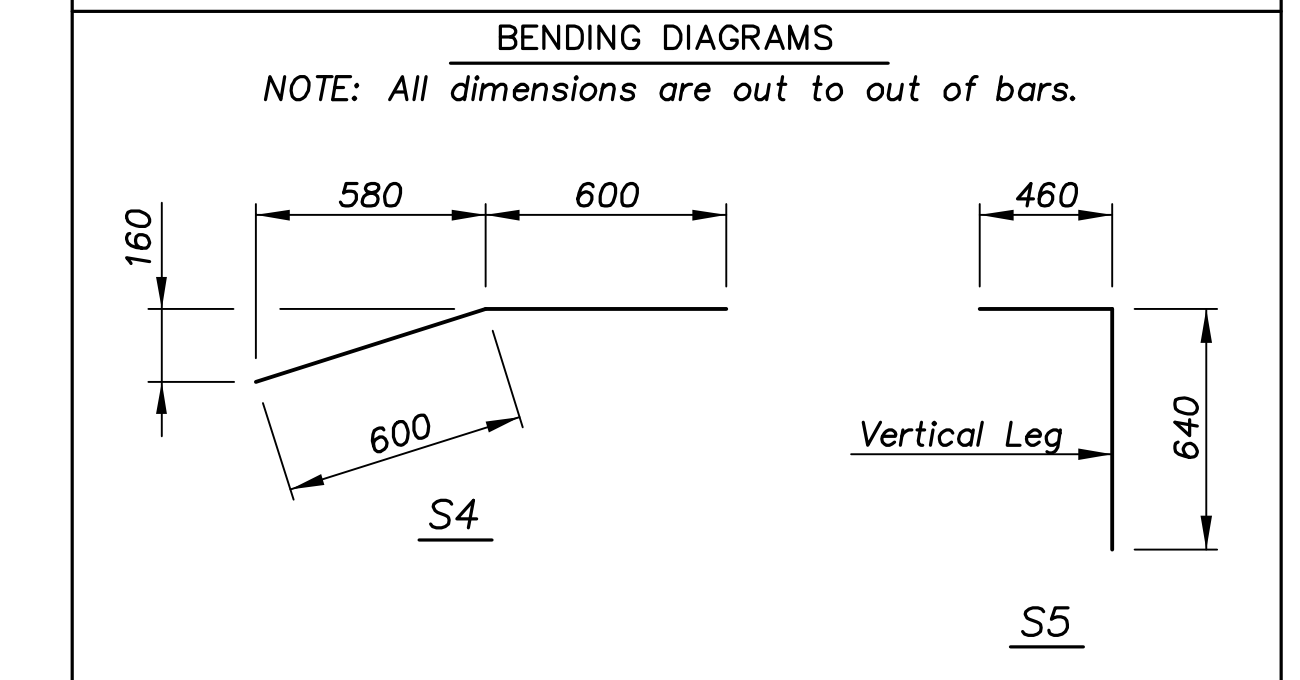
SECTION C-C
(Typical each Drain Location)



ELEVATION D-D
(Typical each Drain Location)

BILL OF REINFORCING STEEL							
STRAIGHT BARS				BENT BARS			
MARK	SIZE	NO.	LENGTH	MARK	SIZE	NO.	LENGTH
S1	13	10	12 960	S4	13	10	1200
S2	13	10	6480	S5	13	51	1100
S3	13	53	1940				

SUMMARY OF QUANTITIES	
Concrete (Grade 30)(AE)	8.3 cu m
Reinforcing Steel (Grade 420)	360 kg
Metal Handrail (1070 mm)	19.9 m



KANSAS DEPARTMENT OF TRANSPORTATION

SPECIAL CONCRETE SIDEWALK DETAILS

SOUTH FRONTAGE ROAD OVER GYPSUM CREEK

Proj. No. 54-87 K-8258-07 SEDGWICK COUNTY

DESIGNED R.S.C. SCALE
 DETAILED T.R.G. DATE
 QUANTITIES T.R.G. SHEET 4 OF 5

1:100
MISC-DETAILS\GYPSUM-APPR