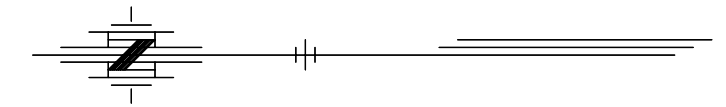


STATE	PROJECT NO.	YEAR	SHEET NO.	TOTAL SHEETS
KANSAS	54-87 K-8258-07	2004	47	101

Scale: 1:500

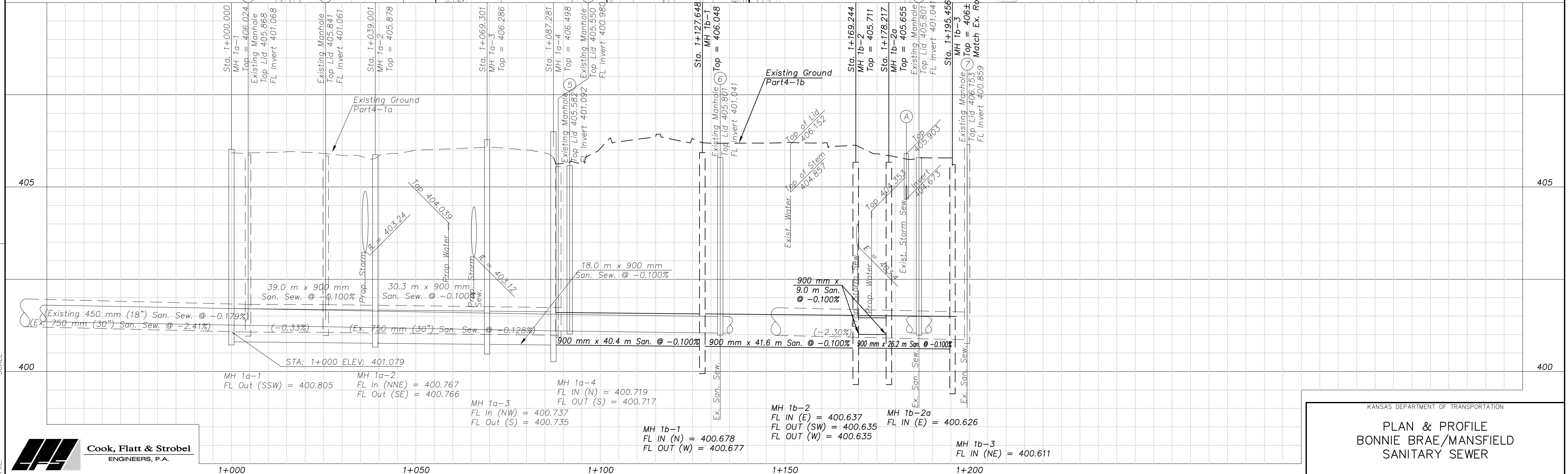
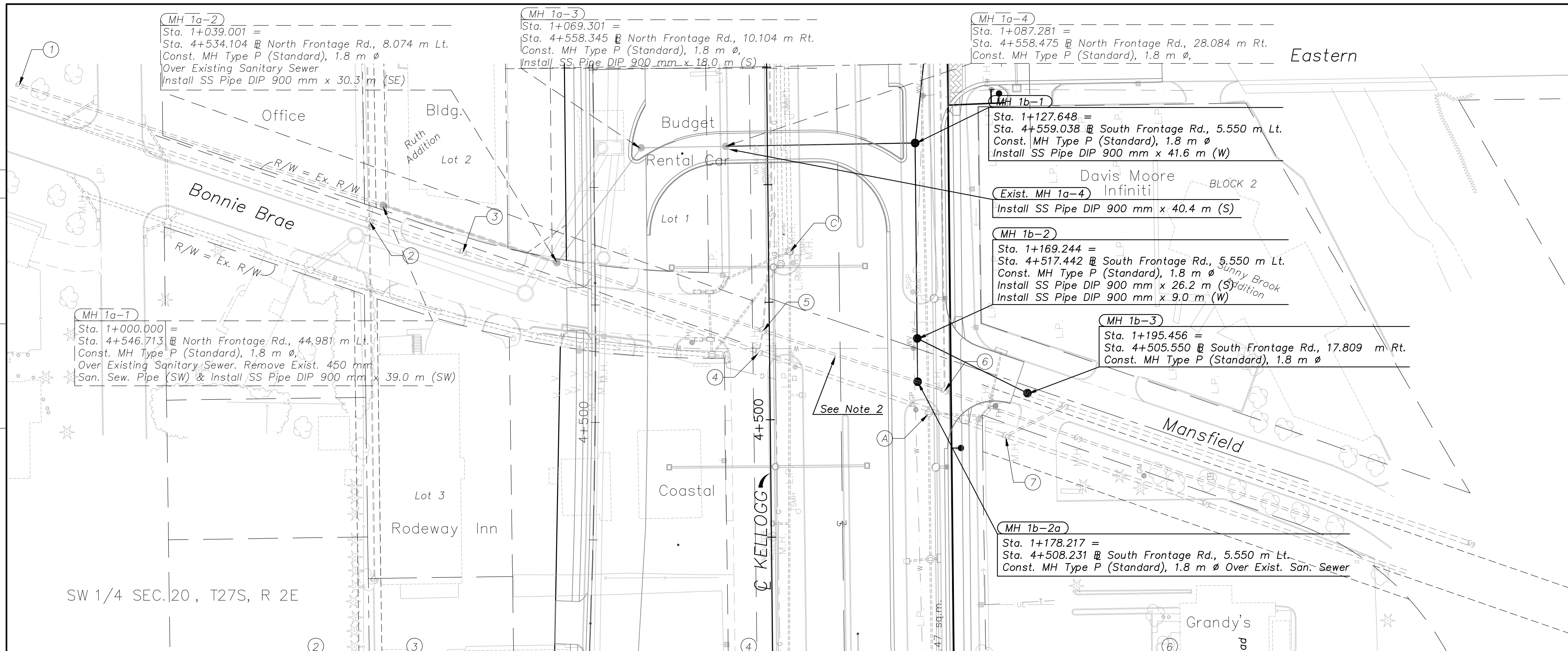


Notes:

- Sanitary Sewer pipe shall be Ductile Iron Pipe, Thickness Class 53, in accordance with the City of Wichita Standard Specifications for "Ductile Iron Pipe (Sanitary)."
- The 450 mm SS Pipe between MH 1a-2 and MH 1b-2a shall be abandoned and the holes at the Manholes Plugged.

DATE	BY

REFERENCE NOTED	REFERENCE CHECKED



KANSAS DEPARTMENT OF TRANSPORTATION
PLAN & PROFILE
BONNIE BRAE/MANSFIELD
SANITARY SEWER