

F.H.W.A. REGION NO.	STATE	PROJECT NO.	YEAR	SHEET NO.	TOTAL SHEETS
7	KANSAS	54-87 K-8258-07	2004	50	101

LEGEND

INDICATES WATER LINE REMOVAL — X —

EXIST. WATER LINE — W — W —

PROPOSED WATER LINE — — —

EXIST. WATER VALVE — WV —

PROPOSED WATER VALVE — — —

EXISTING FIRE HYDRANT — FH —

PROPOSED FIRE HYDRANT — — —

EXISTING WATER METER — WM —

PROPOSED WATER METER — — —

PROPOSED REDUCER — — —

PROPOSED PLUG — — —

PROPOSED BLOWOFF ASSEMBLY — — —

STA. 3+993.993 BEGIN WATERLINE 1A 4.477 m LT.
 @ SOUTH FRONTAGE RD. STA. 4+000.244
 CONNECT TO EXIST. WL 300 mm (12") PIPE
 ABANDON EXIST. WL PIPE 300 mm (12")(E)
 INSTALL
 1 - CIMJ 90° BEND, 300 mm (12")
 1 - CIMJ PLUG, 300 mm (12")(E)

WATER LINE 1A
 CURVE DATA
 PI STA 4+104.281 (BK.)
 $\Delta = 01'48'43"$ RT
 T = 23.696 m
 L = 47.388 m
 R = 1 498.475 m

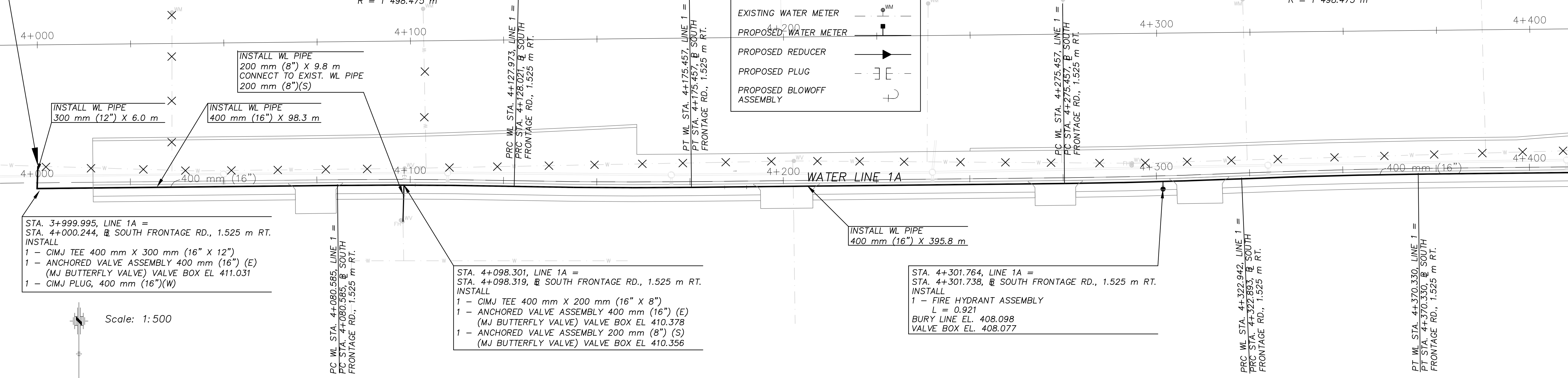
WATER LINE 1A
 CURVE DATA
 PI STA 4+151.717(BK.)
 $\Delta = 01'48'43"$ LT
 T = 23.744 m
 L = 47.484 m
 R = 1 501.525 m

WATER LINE 1A
 CURVE DATA
 PI STA 4+299.202 (BK.)
 $\Delta = 01'48'43"$ LT
 T = 23.696 m
 L = 47.388 m
 R = 1 498.475 m

WATER LINE 1A
 CURVE DATA
 PI STA 4+346.638 (BK.)
 $\Delta = 01'48'43"$ RT
 T = 23.696 m
 L = 47.388 m
 R = 1 498.475 m

BY	DATE

REFERENCE NOTED	REFERENCE CHECKED

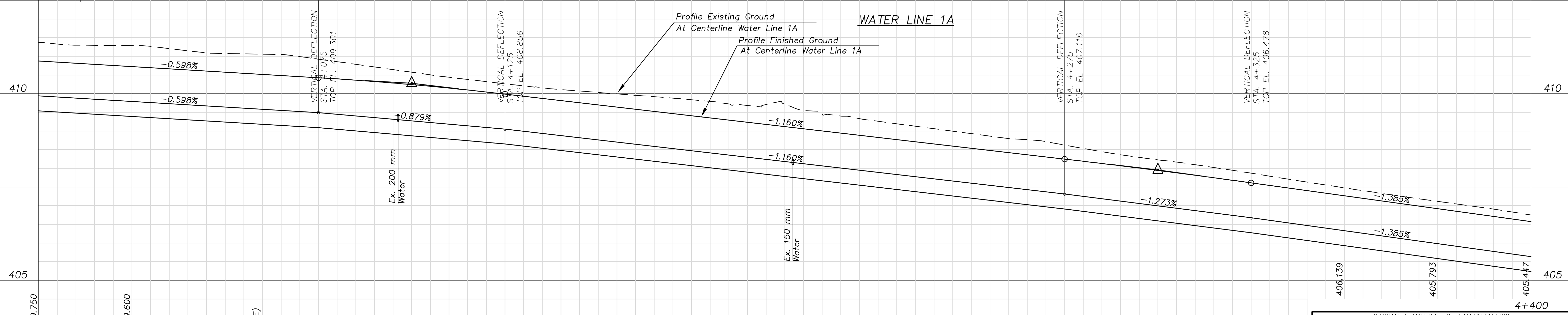


STA. 3+999.995, LINE 1A =
 STA. 4+000.244, @ SOUTH FRONTAGE RD., 1.525 m RT.
 INSTALL
 1 - CIMJ TEE 400 mm X 300 mm (16" X 12")
 1 - ANCHORED VALVE ASSEMBLY 400 mm (16") (E)
 (MJ BUTTERFLY VALVE) VALVE BOX EL 411.031
 1 - CIMJ PLUG, 400 mm (16")(W)

STA. 4+098.301, LINE 1A =
 STA. 4+098.319, @ SOUTH FRONTAGE RD., 1.525 m RT.
 INSTALL
 1 - CIMJ TEE 400 mm X 200 mm (16" X 8")
 1 - ANCHORED VALVE ASSEMBLY 400 mm (16") (E)
 (MJ BUTTERFLY VALVE) VALVE BOX EL 410.378
 1 - ANCHORED VALVE ASSEMBLY 200 mm (8") (S)
 (MJ BUTTERFLY VALVE) VALVE BOX EL 410.356

STA. 4+301.764, LINE 1A =
 STA. 4+301.738, @ SOUTH FRONTAGE RD., 1.525 m RT.
 INSTALL
 1 - FIRE HYDRANT ASSEMBLY
 L = 0.921
 BURY LINE EL. 408.098
 VALVE BOX EL. 408.077

Scale: 1:500



Drawn by: [Signature]
 File: J:\01026\Water\POB

SCALE: 1:500

Cook, Flatt & Strobel
 ENGINEERS, P.A.

KANSAS DEPARTMENT OF TRANSPORTATION
PLAN & PROFILE - S. FTG. RD.
WATER LINE 1A
 STA. 4+000 - STA. 4+400
 City Of Wichita Sedgwick, Co.