

F.H.W.A. REGION NO.	STATE	PROJECT NO.	YEAR	SHEET NO.	TOTAL SHEETS
7	KANSAS	54-87 K-8258-07	2004	52	101

Scale: 1:500

REFERENCE NOTED	REFERENCE CHECKED	BY	DATE

STA. 4+968.272, LINE 1A =
 STA. 4+942.512, @ SOUTH FRONTAGE RD., 7.408 m LT.
 CUT EXIST. 300 mm LINE
 INSTALL
 1 - CIMJ 90° BEND 300 mm (12")
 1 - CIMJ PLUG (300 mm)(W)
 CONNECT TO EXIST. WL PIPE 300 mm (12") (E)
 ABANDON EXIST. WL PIPE 300 mm (12") (W)

STA. 4+679.623 LINE 1A =
 Sta. 4+675.138, @ SOUTH FRONTAGE RD., 7.083 m ± LT.
 INSTALL 3 - CIMJ 45° BEND

STA. 4+708.873 LINE 1A =
 STA. 4+704.431 @ SOUTH FRONTAGE RD., 8.638± m LT.
 INSTALL 3 - CIMJ 45° BEND

STA. 4+888.723 LINE 1A =
 STA. 4+888.656 @ SOUTH FRONTAGE RD. 1.525 m RT.
 INSTALL
 1 - CIMJ 45° BEND

STA. 4+964.540, LINE 1A =
 STA. 4+943.175 @ SOUTH FRONTAGE RD., 3.736 m LT.
 INSTALL 1 - CIMJ 11.25° BEND

INSTALL WL PIPE
 400 mm (16") X 5.5 m
 W/ EXISTING 600 mm CASING

WATER LINE 1
 CURVE DATA
 PI STA 4+742.782 (BK.)
 $\Delta = 02^{\circ}29'56''$ LT
 T = 32.749 m
 L = 65.487 m
 R = 1 501.525 m

INSTALL WL PIPE
 400 mm (16") X 244.6 m

INSTALL WL PIPE
 300 mm (12") X 13.7 m

STA. 4+895.890 LINE 1A =
 STA. 4+894.724 @ SOUTH FRONTAGE RD. 5.339 m RT.
 INSTALL
 1 - CIMJ 45° BEND

INSTALL WL PIPE
 200 mm (8") X 20.0 m
 CONNECT TO EXIST. WL PIPE
 200 mm (8") (S)

STA. STA: 4+954.612, LINE 1A =
 STA. 4+943.000, @ SOUTH FRONTAGE RD., 6.190 m RT.
 INSTALL
 1 - CIMJ 90° BEND 300 mm (12")
 1 - ANCHOR VALVE ASSEMBLY 400 mm (16") (W)
 (MJ BUTTERFLY VALVE) VALVE BOX EL. 410.90
 1 - CIMJ CONCENTRIC REDUCER 400 mm X 300 mm (16" X 12")

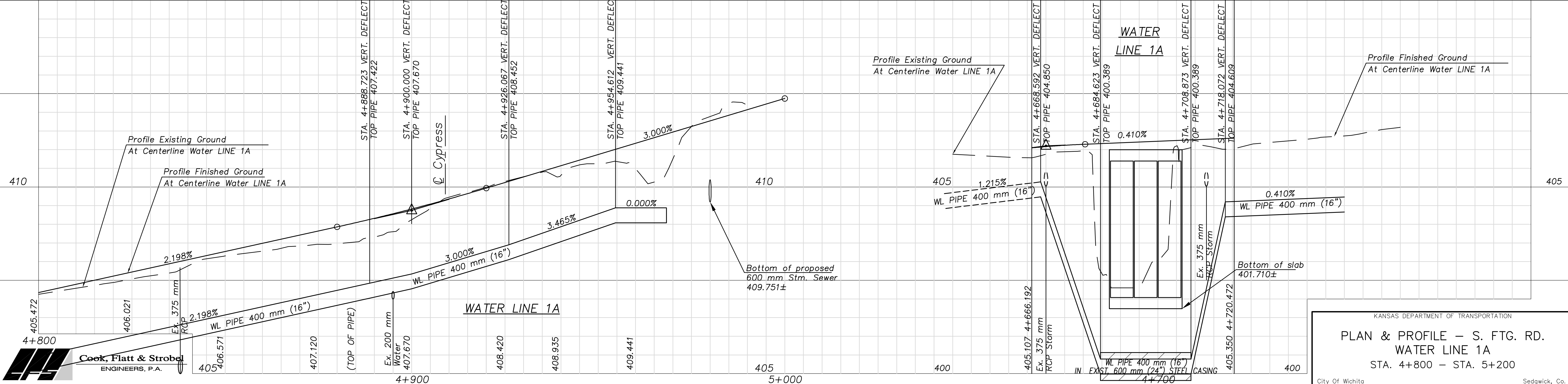
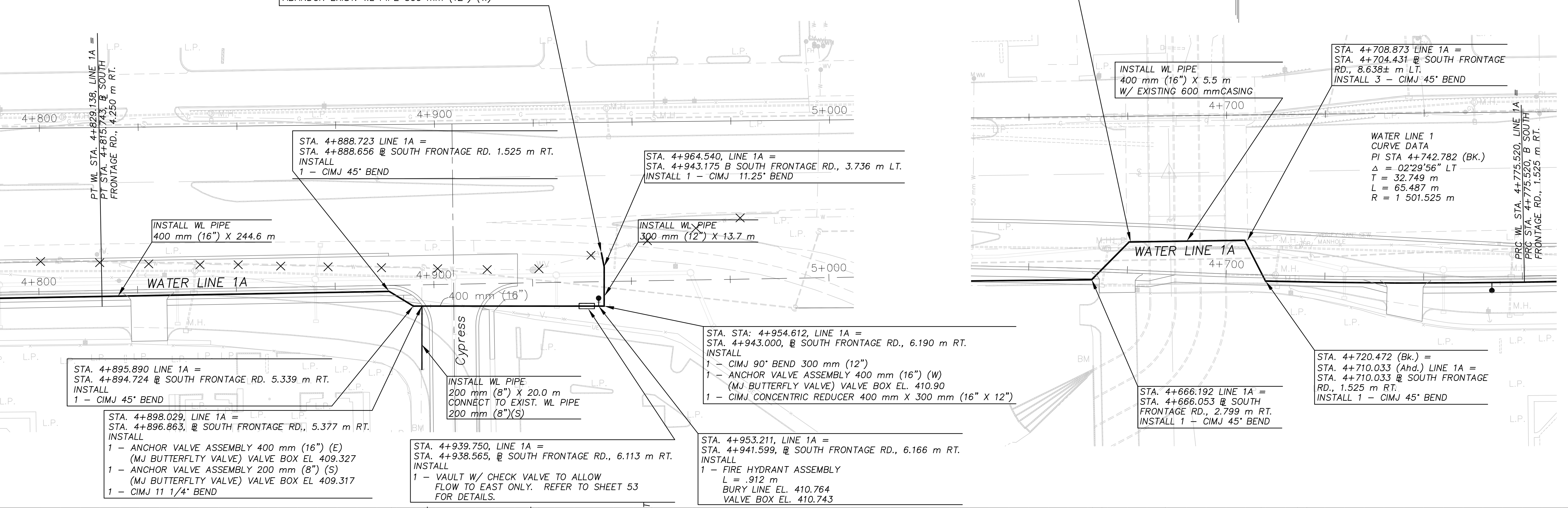
STA. 4+666.192 LINE 1A =
 STA. 4+666.053 @ SOUTH FRONTAGE RD., 2.799 m RT.
 INSTALL 1 - CIMJ 45° BEND

STA. 4+720.472 (Bk.) =
 STA. 4+710.033 (Ahd.) LINE 1A =
 STA. 4+710.033 @ SOUTH FRONTAGE RD., 1.525 m RT.
 INSTALL 1 - CIMJ 45° BEND

STA. 4+898.029, LINE 1A =
 STA. 4+896.863, @ SOUTH FRONTAGE RD., 5.377 m RT.
 INSTALL
 1 - ANCHOR VALVE ASSEMBLY 400 mm (16") (E)
 (MJ BUTTERFLY VALVE) VALVE BOX EL. 409.327
 1 - ANCHOR VALVE ASSEMBLY 200 mm (8") (S)
 (MJ BUTTERFLY VALVE) VALVE BOX EL. 409.317
 1 - CIMJ 11 1/4° BEND

STA. 4+939.750, LINE 1A =
 STA. 4+938.565, @ SOUTH FRONTAGE RD., 6.113 m RT.
 INSTALL
 1 - VAULT W/ CHECK VALVE TO ALLOW FLOW TO EAST ONLY. REFER TO SHEET 53 FOR DETAILS.

STA. 4+953.211, LINE 1A =
 STA. 4+941.599, @ SOUTH FRONTAGE RD., 6.166 m RT.
 INSTALL
 1 - FIRE HYDRANT ASSEMBLY
 L = .912 m
 BURY LINE EL. 410.764
 VALVE BOX EL. 410.743



KANSAS DEPARTMENT OF TRANSPORTATION

PLAN & PROFILE - S. FTG. RD.
WATER LINE 1A
 STA. 4+800 - STA. 5+200

City Of Wichita Sedgwick, Co.

Drawn by: [Signature]
 File: J:\01026\Water\P08
 Plotted: [Signature]
 SCALE: 1:500