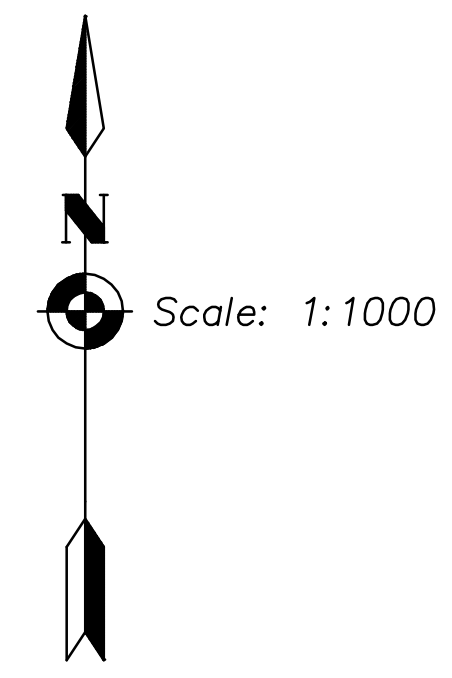
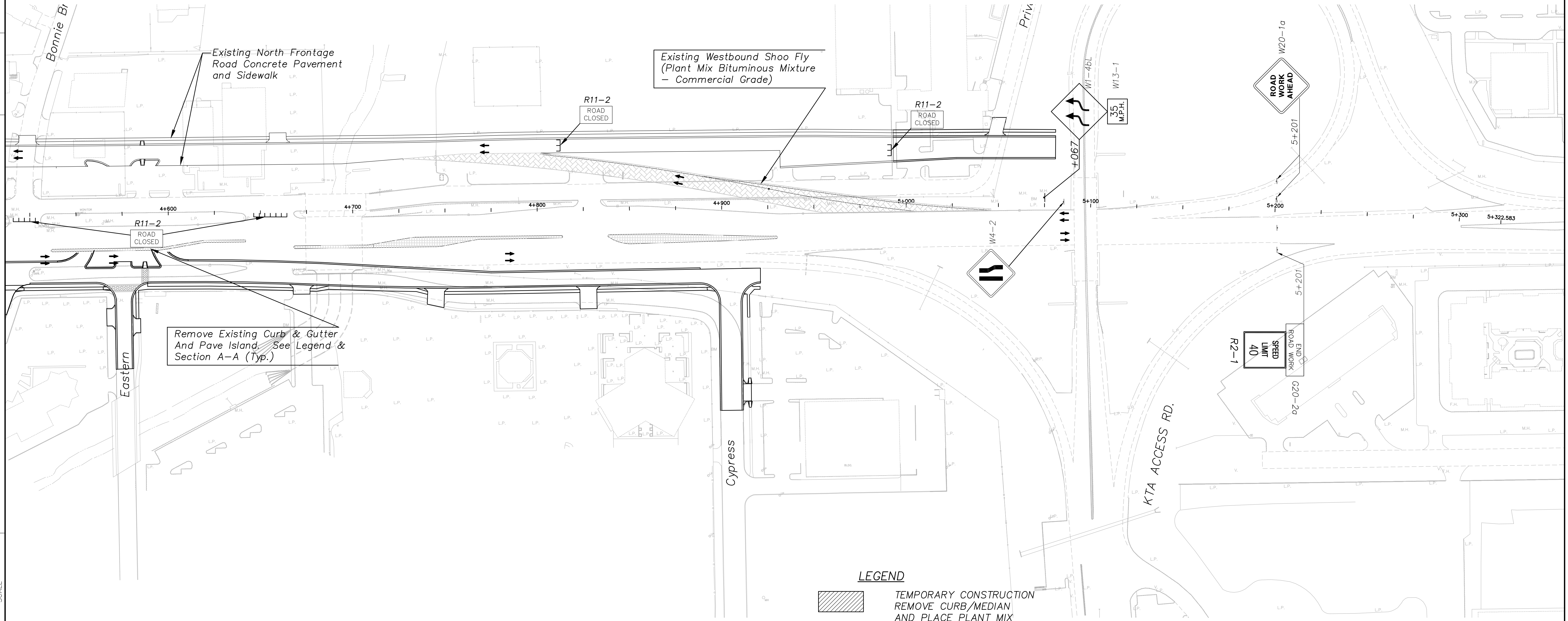


STATE	PROJECT NO.	YEAR	SHEET NO.	TOTAL SHEETS
KANSAS	54-87 K-8258-07	2004	74	101



DATE	BY

Drawn by:	Plotted:	SCALE
File:		



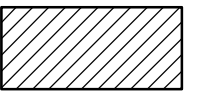
Existing North Frontage Road Concrete Pavement and Sidewalk

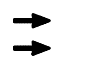
Existing Westbound Shoo Fly (Plant Mix Bituminous Mixture - Commercial Grade)


Remove Existing Curb & Gutter And Pave Island. See Legend & Section A-A (Typ.)

**GENERAL SEQUENCE OF CONSTRUCTION PHASE 1**  
 1. Move Existing WB Kellogg to new North Frontage Road.  
 2. Modify Existing WB Kellogg to accommodate 3 lanes.  
 (Total width to be 13.3 m)

**LEGEND**

 TEMPORARY CONSTRUCTION REMOVE CURB/MEDIAN AND PLACE PLANT MIX BITUMINOUS MIXTURE - COMMERCIAL GRADE (APPROXIMATELY 50 mm THICK)

 TRAFFIC FLOW

 TYPE III BARRICADE



KANSAS DEPARTMENT OF TRANSPORTATION  
**TRAFFIC CONTROL - PHASE I**  
**SOUTH FRONTAGE ROAD**  
 STA. 4+500 TO STA. 5+100