

FIGURE 1: TYPICAL SIGNING FOR ROAD CLOSURE

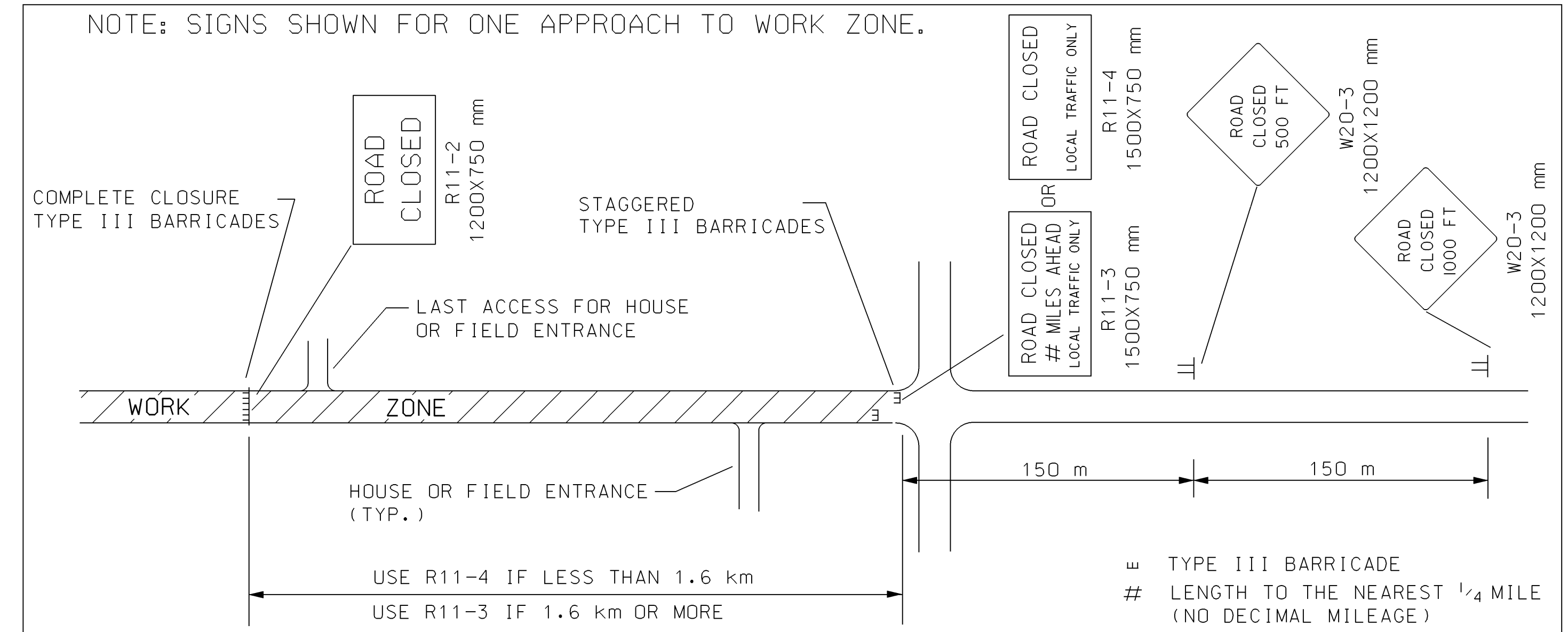


FIGURE 4: TYPICAL SIGNING FOR ROAD CLOSURE - LOCAL TRAFFIC ACCESS

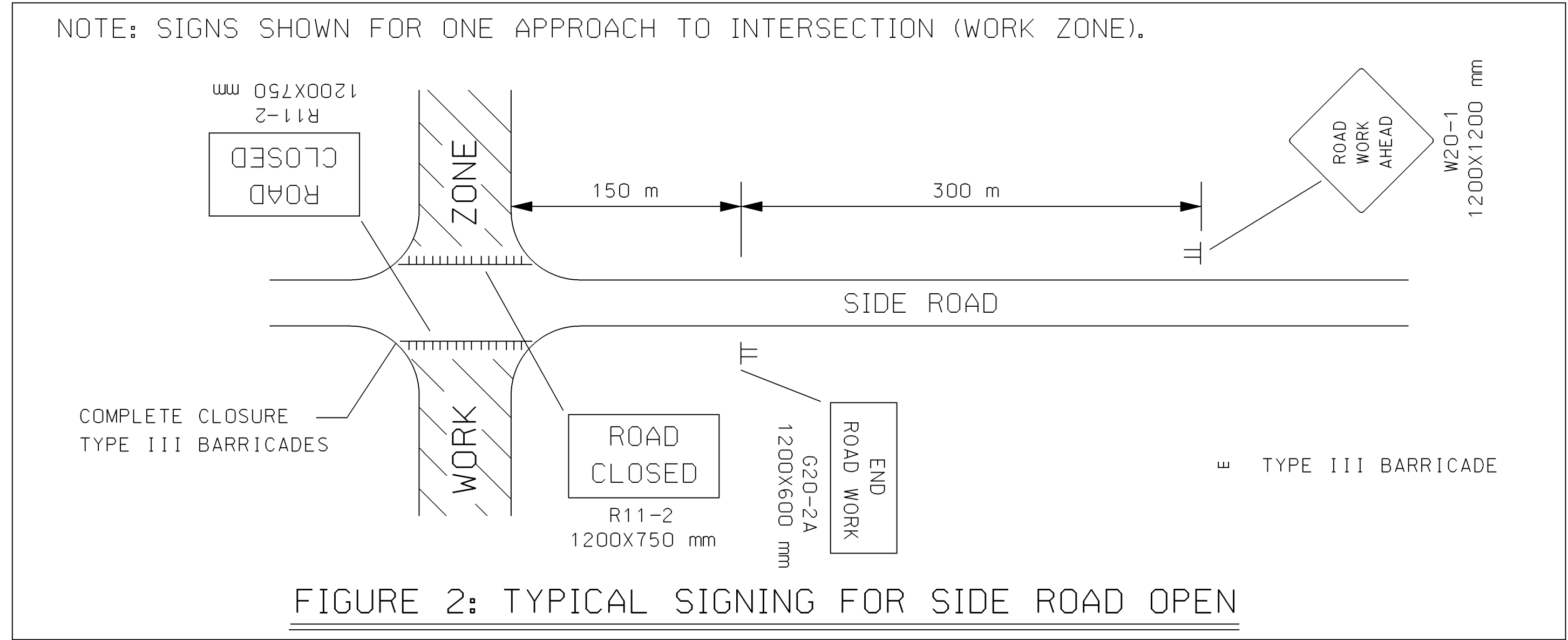


FIGURE 2: TYPICAL SIGNING FOR SIDE ROAD OPEN

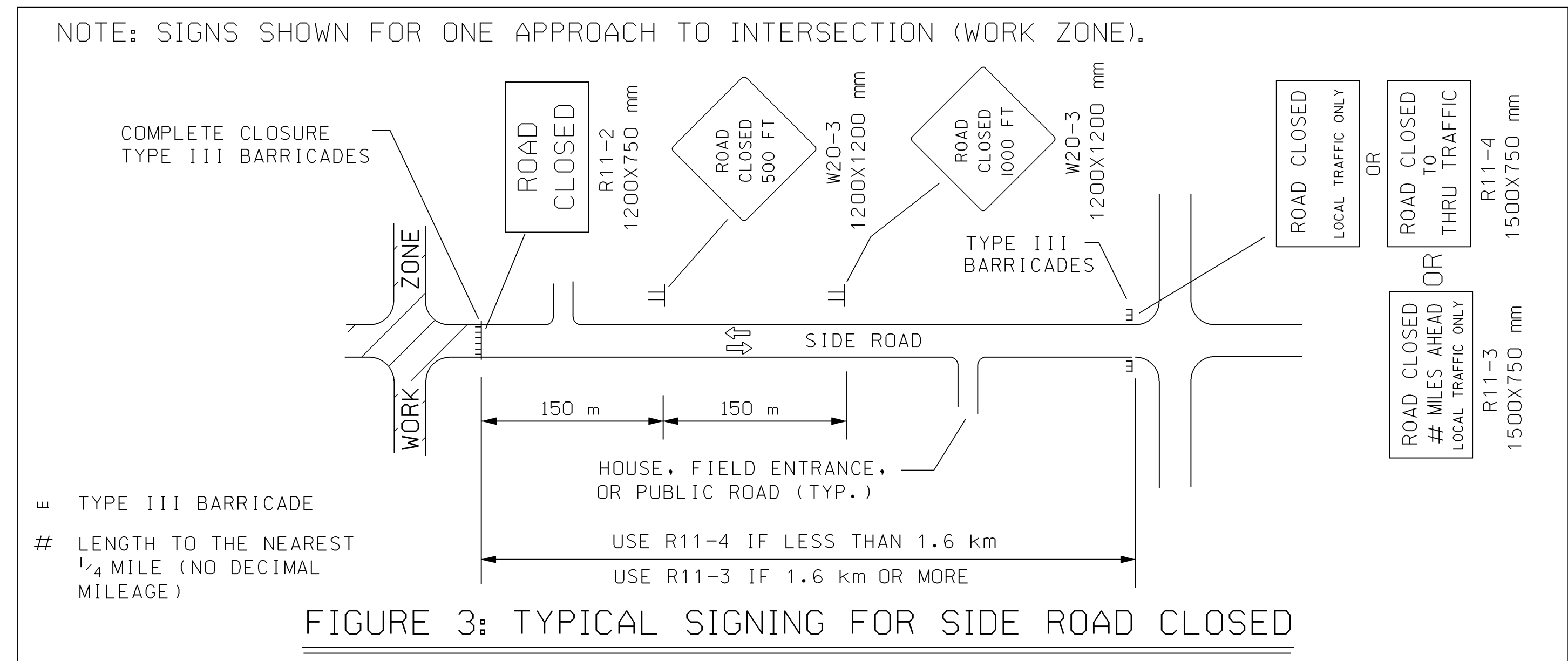


FIGURE 3: TYPICAL SIGNING FOR SIDE ROAD CLOSED

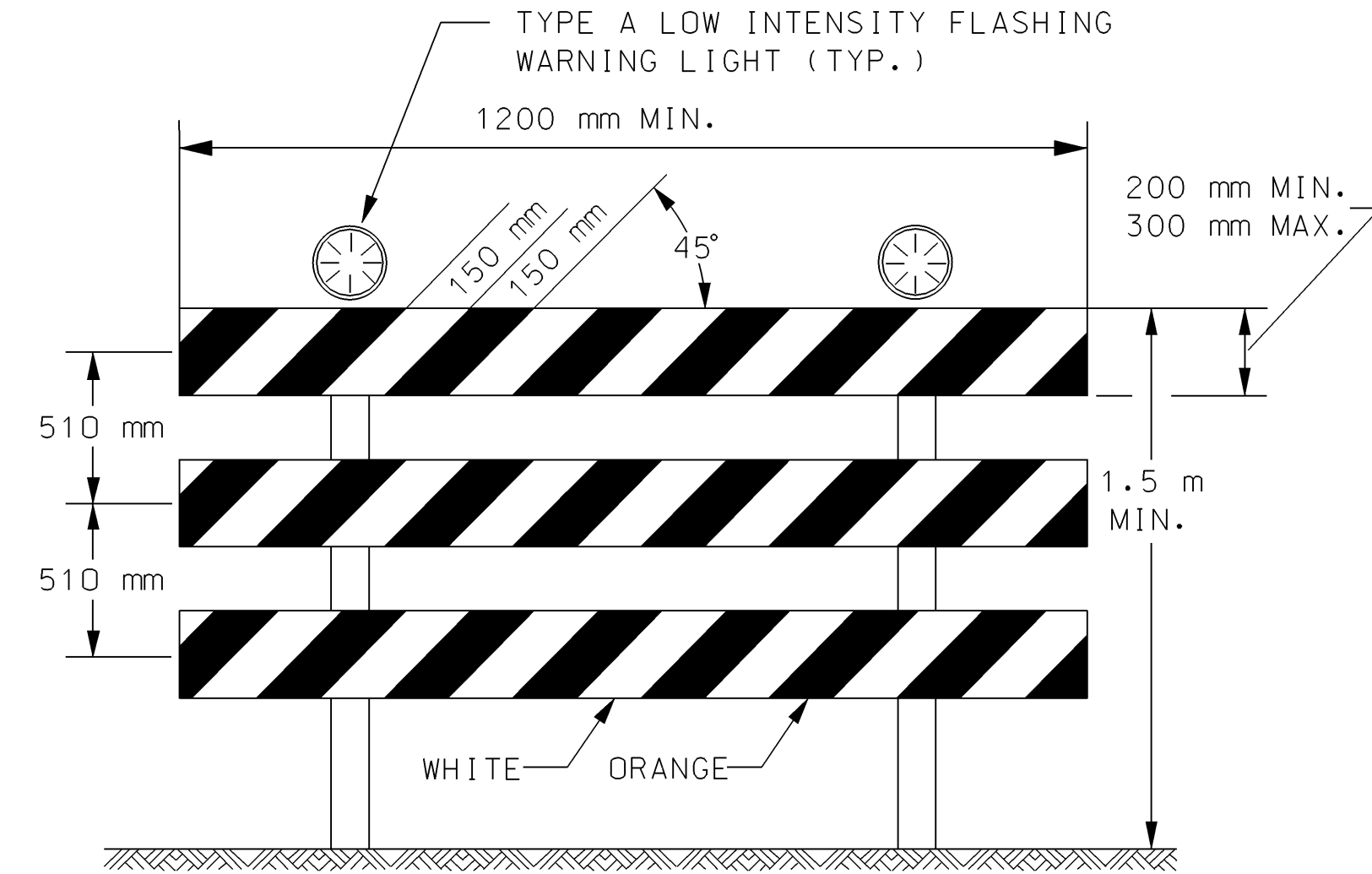
NOTES:

- SIGNS:
 - THE R11-4 (ROAD CLOSED TO THRU TRAFFIC OR ROAD CLOSED LOCAL TRAFFIC ONLY) SIGN SHALL BE USED WHEN THE DISTANCE TO THE POINT OF COMPLETE CLOSURE OF THE ROADWAY IS LESS THAN 1.6 km.
 - THE R11-3 (ROAD CLOSED # MILES AHEAD LOCAL TRAFFIC ONLY) SIGN SHALL BE USED WHEN THE DISTANCE TO THE POINT OF COMPLETE CLOSURE OF THE ROADWAY IS 1.6 km OR GREATER.
- BARRICADE PLACEMENT:
 - COMPLETE ROAD CLOSURE

WHEN A ROADWAY IS CLOSED, TYPE III BARRICADES SHALL BE PLACED END-TO-END TO COMPLETELY COVER THE ROADWAY AND SHOULDERS. WHEN ACCESS MUST BE ALLOWED FOR CONSTRUCTION OR OTHER OFFICIAL/GOVERNMENT VEHICLES, TYPE III BARRICADES SHALL BE LONGITUDINALLY STAGGERED FAR ENOUGH APART FROM ONE ANOTHER TO ALLOW SAFE PASSAGE OF VEHICLES AND MAINTAIN THE APPEARANCE OF A CLOSED ROADWAY. TYPE III BARRICADES SHALL BE REALIGNED AND PLACED END-TO-END TO DENY ANY ACCESS WHEN THE CONSTRUCTION ACTIVITY HAS CEASED FOR THE DAY.
 - ROAD CLOSED - LOCAL TRAFFIC

AS SHOWN IN FIGURE 4, WHEN LOCAL TRAFFIC MUST BE ALLOWED ACCESS INTO THE WORK ZONE, TYPE III BARRICADES SHALL BE LONGITUDINALLY STAGGERED TO MAINTAIN THE APPEARANCE OF A CLOSED ROADWAY. A SECOND LINE OF END-TO-END TYPE III BARRICADES SHALL BE PLACED JUST BEYOND THE LAST ACCESS POINT IN THE WORK ZONE, TO COMPLETELY CLOSE THE ROADWAY AS DESCRIBED IN NOTE 2-A.

AS SHOWN IN FIGURE 1 AND FIGURE 3, AT THE POINT WHERE THRU TRAFFIC MUST DETOUR AND LOCAL TRAFFIC CAN PROCEED TO THE LOCATION WHERE THE ROADWAY IS COMPLETELY CLOSED, THE R11-3 (ROAD CLOSED # MILES AHEAD LOCAL TRAFFIC ONLY) OR R11-4 (ROAD CLOSED LOCAL TRAFFIC ONLY OR ROAD CLOSED TO THRU TRAFFIC) SIGN SHALL BE USED WITH TYPE III BARRICADES (WINGED POSITION), PLACED ON THE SHOULDERS OF ROADWAY.



TYPE III BARRICADE WITH LIGHTS

THE ENTIRE AREA OF BARRICADE RAILS, BOTH FRONT AND BACK, SHALL BE FULLY REFLECTORIZED WITH TYPE III HIGH PERFORMANCE RETROREFLECTIVE SHEETING.

THE STRIPED SHALL SLOPE DOWNWARD TO THE SIDE TRAFFIC IS TO PROCEED OR TOWARD THE CENTER OF THE ROADWAY AT ROAD CLOSURES.

APPROVED SIGNS MOUNTED ON TYPE III BARRICADES SHOULD NOT COVER MORE THAN 50% OF THE TOP TWO RAILS OR 33% OF THE TOTAL AREA OF THE THREE RAILS.

WHEN BARRICADES ARE PLACED END-TO-END, A TYPE A FLASHING WARNING LIGHT SHALL BE MOUNTED NEAR EACH OUTSIDE CORNER OF THE END BARRICADES.

TYPE A FLASHING WARNING LIGHTS SHALL BE MAINTAINED SO AS TO BE VISIBLE ON A CLEAR NIGHT FROM A DISTANCE OF 1000 m.

3				
2				
1				
NO.	DATE	REVISIONS	BY	APP'D

KANSAS DEPARTMENT OF TRANSPORTATION

TYPICAL TRAFFIC CONTROL ROAD CLOSURES

TE704SI 9/26/02

FHWA APPROVAL	9-30-02	APP'D	Steven A. Buckley
DESIGNED	K.K.M.	DETAILED	M.J.H.
DESIGN CK.	DETAIL CK.	QUANTITIES	TRACED
		QUAN. CK.	TRACE CK.

Plotted By : @USERNAME@
 Plot File : @DGN@SPEC@
 Plot Date : @STIME@