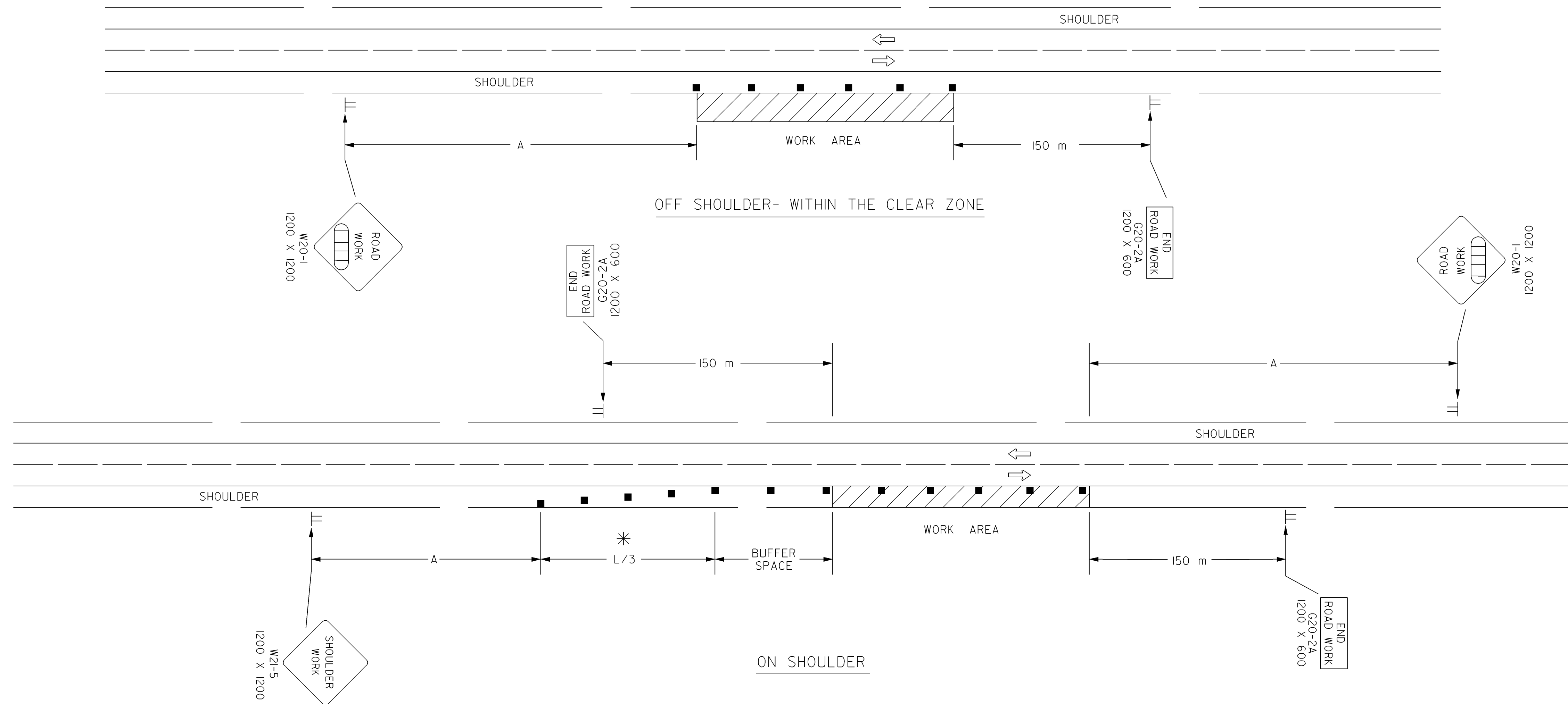


STATE	PROJECT NO.	YEAR	SHEET NO.	TOTAL SHEETS
KANSAS	54-87 K-8258-07	2004	85	101

REFER TO STD. TE710SI FOR ADDITIONAL INFORMATION ON TRAFFIC CONTROL SIGNS AND SIGN SPACING.
REFER TO STD. TE702SI FOR INFORMATION ON TAPERS AND CHANNELIZING DEVICES.
REFER TO STD. TE700SI FOR LENGTH OF BUFFER SPACE.

NOTE: NO TRAFFIC CONTROL IS REQUIRED IF THE WORK AREA IS LOCATED OUTSIDE OF THE CLEAR ZONE.

FOR OPERATIONS OF 60 MINUTES OR LESS, ALL SIGNS AND CHANNELIZING DEVICES MAY BE ELIMINATED IF A VEHICLE WITH AN ACTIVATED FLASHING OR REVOLVING YELLOW LIGHT IS USED.



WHEN CONCRETE SAFETY BARRIER IS USED, CHANNELIZING DEVICES ARE NOT NEEDED ALONG THE TANGENT BARRIER SECTION.

* OMIT TAPER IF PAVED SHOULDER IS LESS THAN 2.4 METERS WIDE.

■ Channelizing Device
□ AHEAD, 1500 FT OR 1 MILE

Plotted By : @USERNAME@
Plot File : @DNSSPEC@
Plot Date : @STIME@

3				
2				
1	9-26-02	REMOVED G20-1 SIGNS	M.H.	S.A.B.
NO.	DATE	REVISIONS	BY	APP'D

KANSAS DEPARTMENT OF TRANSPORTATION			
TYPICAL TRAFFIC CONTROL			
WORK ON OR NEAR THE SHOULDER			
UNDIVIDED HIGHWAY (2 OR 4 LANE)			
TE720SI			
9/1/00			
FHWA APPROVAL	9-30-02	APP'D	Michael P. McKenna
DESIGNED	L.E.R.	DETAILED	B.A.H.
DESIGN CK.	DETAIL CK.	QUANTITIES	TRACED
		QUAN. CK.	TRACE CK.