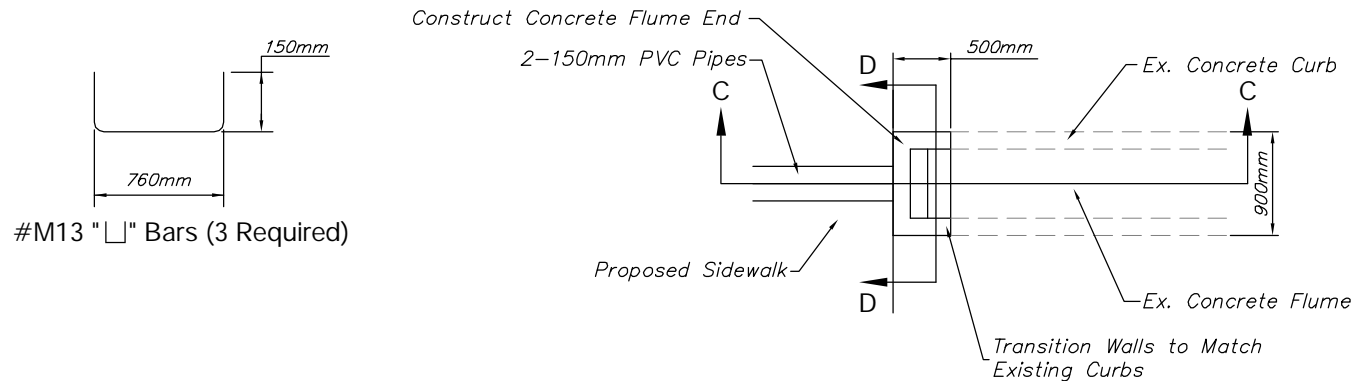
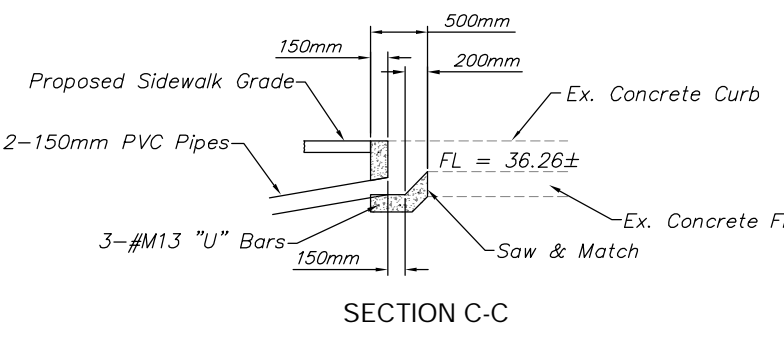


FHWA REGION NO.	STATE	PROJECT NO.	FISCAL YEAR	SHEET NO.	TOTAL SHEET
7	KANSAS	87 N-0226-01	2006	8	118

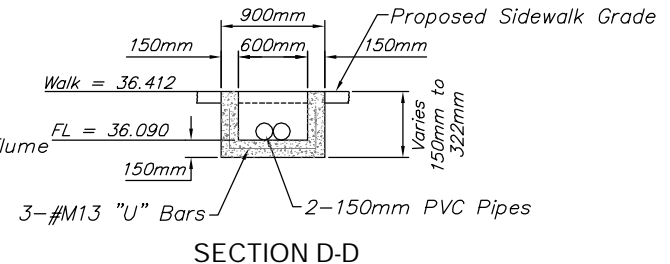


**CONCRETE FLUME END DETAIL**

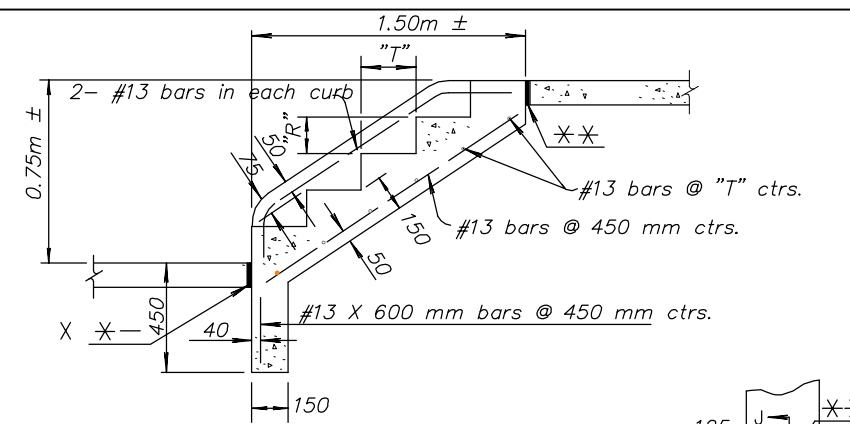
Sta. 0+518.446



**SECTION C-C**



**SECTION D-D**

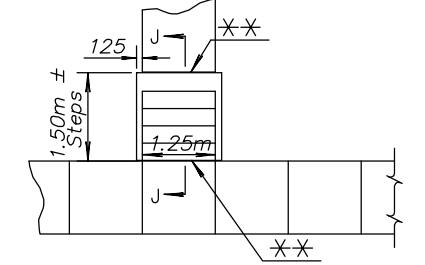


**SECTION J-J**

Step formula:  
 "R" x "T" = not less than 45,000 nor more than 48,400.  
 The maximum "R" = 170 mm  
 The minimum "T" = 280 mm

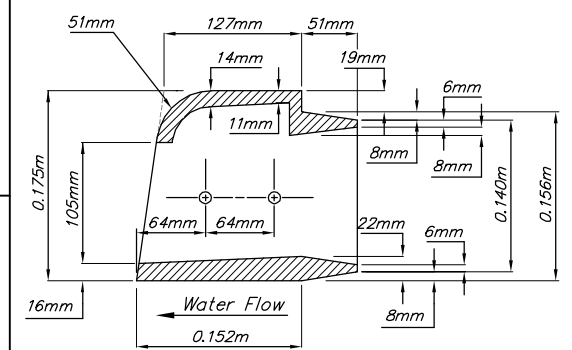
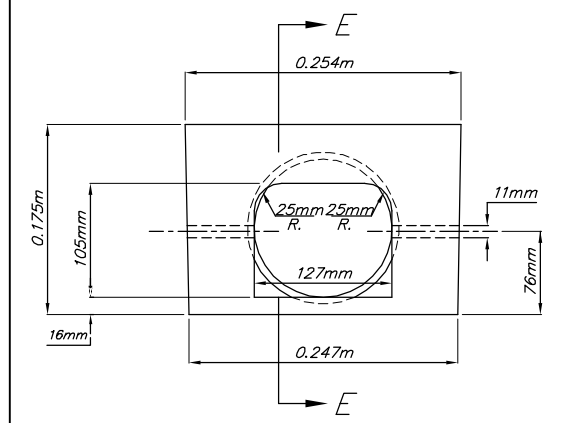
Note: Reinforcing bars shown are to be used only when more than four steps are necessary. Where field conditions permit, the steps should not be constructed too steep.

\*\* Expansion joint (19 mm redwood board) located as shown.



**CONCRETE STEP DETAIL**

Sta. 1+028.2 & Sta. 1+043.3



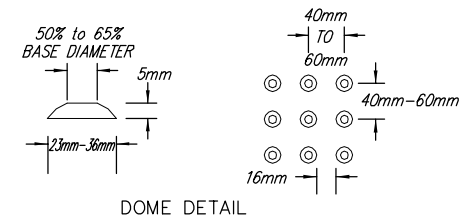
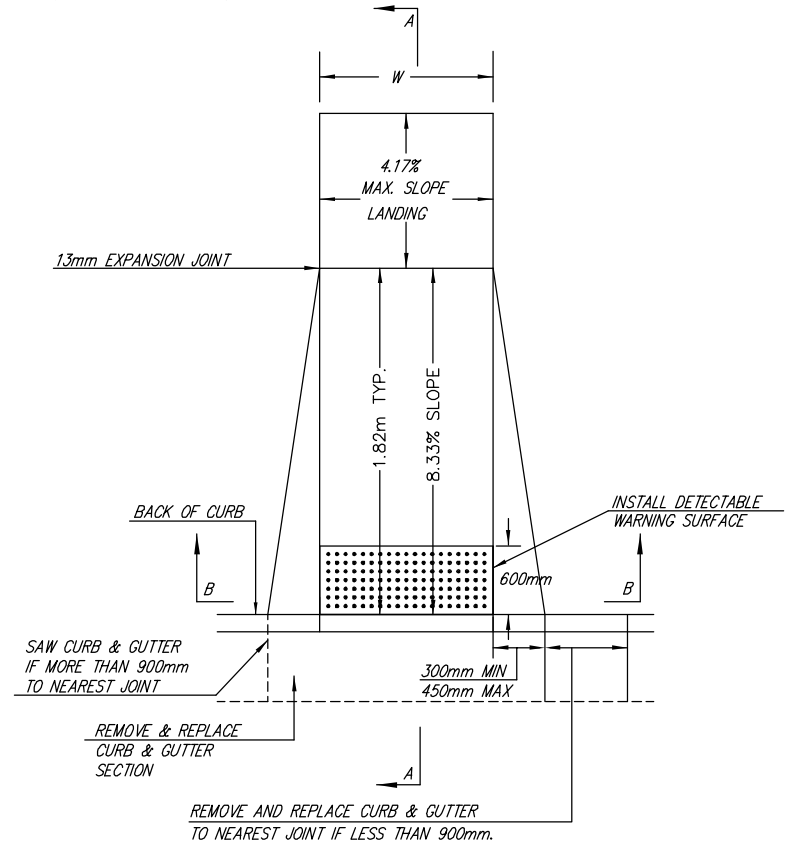
**SECTION E-E**

**DEETER CURB DRAIN**

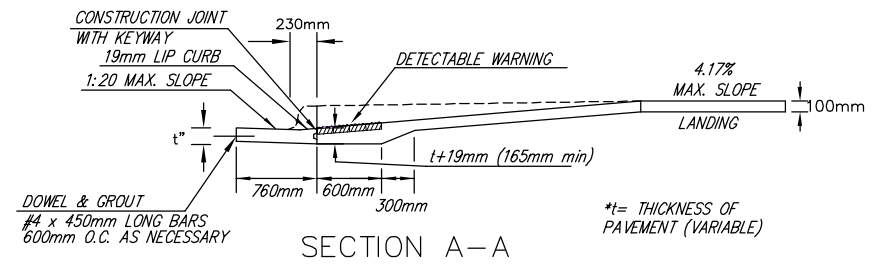
#2449 - 6 CURB (OUT-FLOW)

EST. WT. = 18.14 KG.  
 Sta. 0+581.446

W= 1.22m FOR STANDARD RAMP  
 W= 1.52m FOR RAMPS AT SCHOOL CROSSWALKS  
 (OR TO MATCH EXISTING)



**DOME DETAIL**



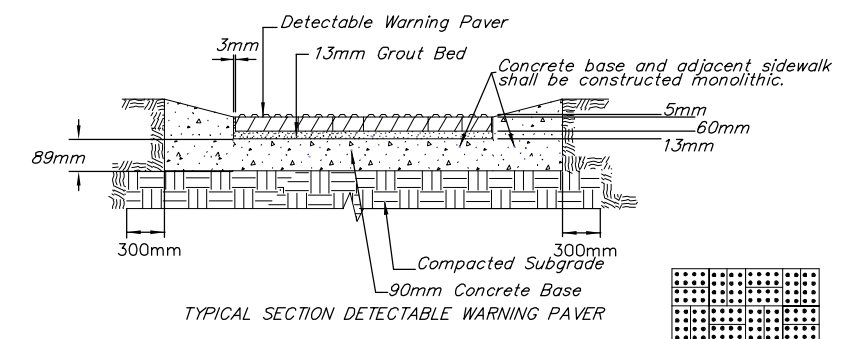
**SECTION A-A**

\*t= THICKNESS OF PAVEMENT (VARIABLE)

AUGUST 4, 2003

**STANDARD WHEELCHAIR RAMP WITH DETECTABLE WARNING**

CONSTRUCTION DETAIL FOR STREETS WITH COMBINED CURB & GUTTER (TYPE A)



**TYPICAL SECTION DETECTABLE WARNING PAVER**

NOTE: RAMPS TO COMPLY WITH LATEST ADAAG GUIDELINES. PAVESTONE DETECTABLE WARNING PAVERS (OR AN APPROVED EQUAL) SHALL BE USED IN ALL WHEELCHAIR RAMPS. THE RED PAVER SHALL BE INSTALLED USING A BASKET WEAVE/PARQUET PATTERN. OTHER PATTERNS MAY BE USED WITH APPROVAL OF ENGINEER. SAND FILL JOINTS. ALIGN DOMES IN THE DIRECTION OF PEDESTRIAN TRAVEL.

**SECTION B-B**

Note: All work associated with the installation of the wheelchair ramps, including construction of depressed curb and gutter, shall be SUBSIDIARY to the bid item "Wheelchair Ramp."



PROJECT NUMBER 472-83862		SHEET NAME Miscdt2		ENGINEERING DIRECTORY F:\Hillside\Details	
DESIGN Staff	DRAWN Staff	APPROVED JFB	DATE May 2006	SCALE None	BAUGHMAN NO 01-03-E947

CAPITAL IMPROVEMENT PROJECT  
**MISCELLANEOUS PAVEMENT DETAILS**  
 HILLSIDE AVENUE - KELLOGG TO 3RD STREET NORTH

**BAUGHMAN COMPANY, P.A.**  
 ENGINEERING, SURVEYING, & PLANNING  
 316-262-7271 • 315 ELLIS • WICHITA, KANSAS 67211