

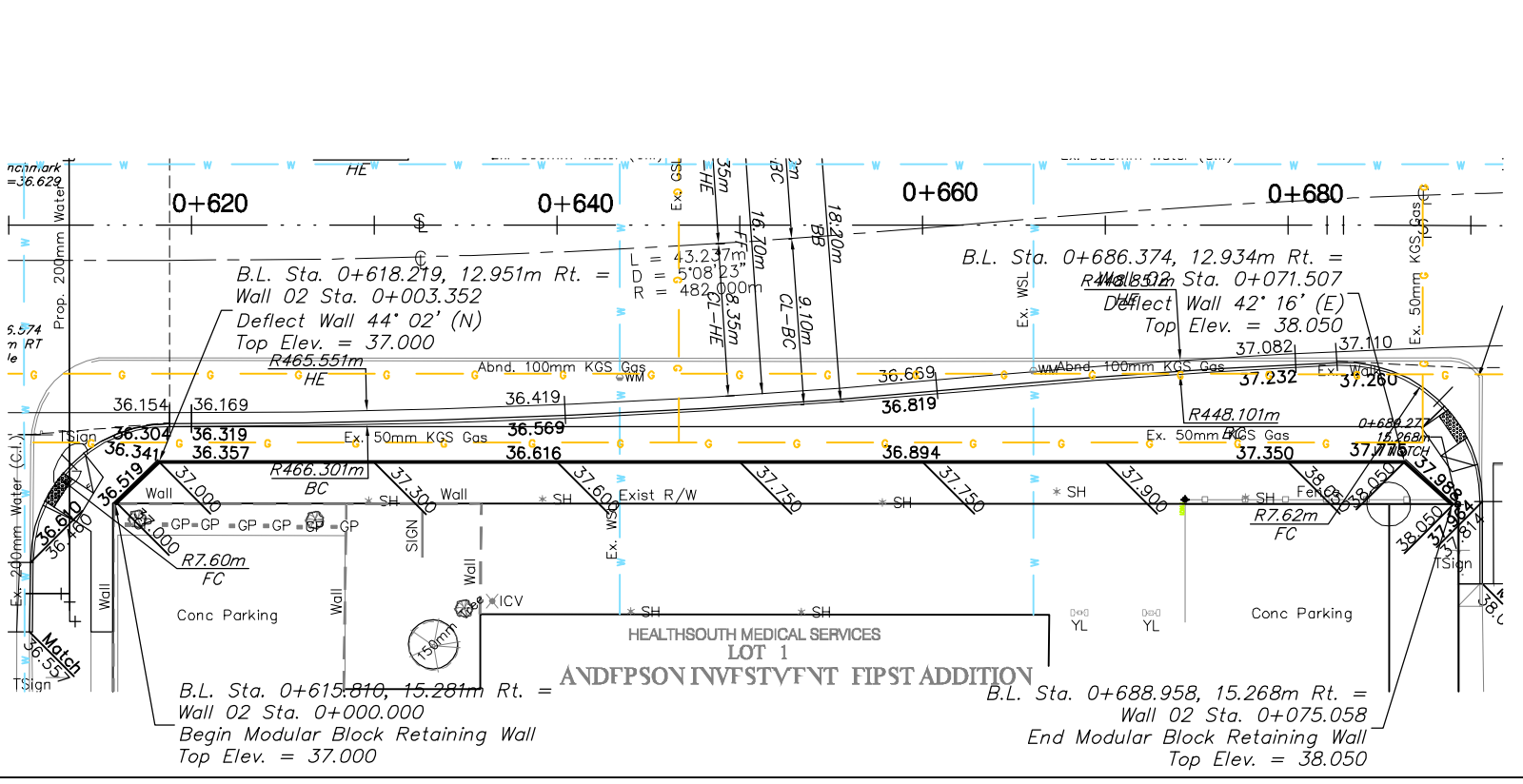
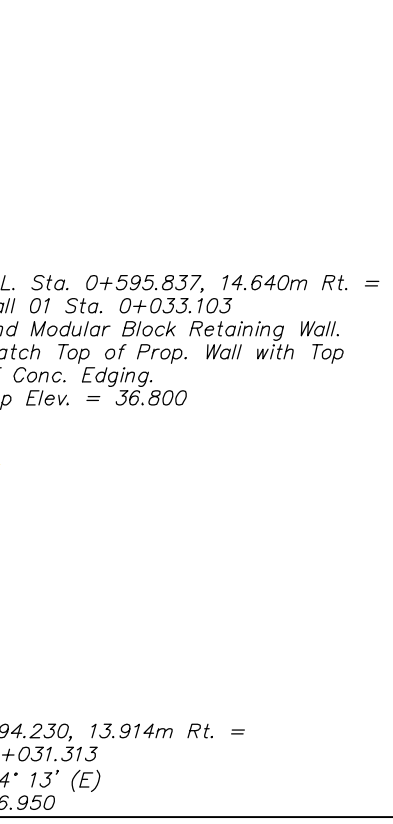
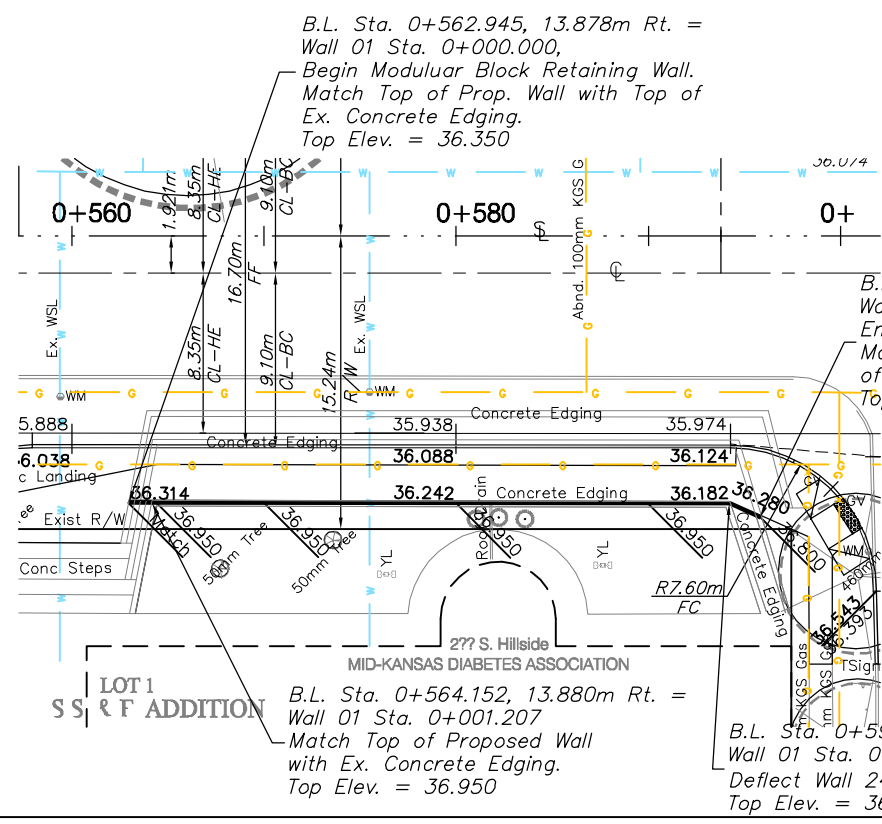
FHWA REGION NO.	STATE	PROJECT NO.	FISCAL YEAR	SHEET NO.	TOTL SHEE
7	KANSAS	87 N-0226-01	2006	28	118

SCALE:
1:200 HORIZONTAL
1:20 VERTICAL

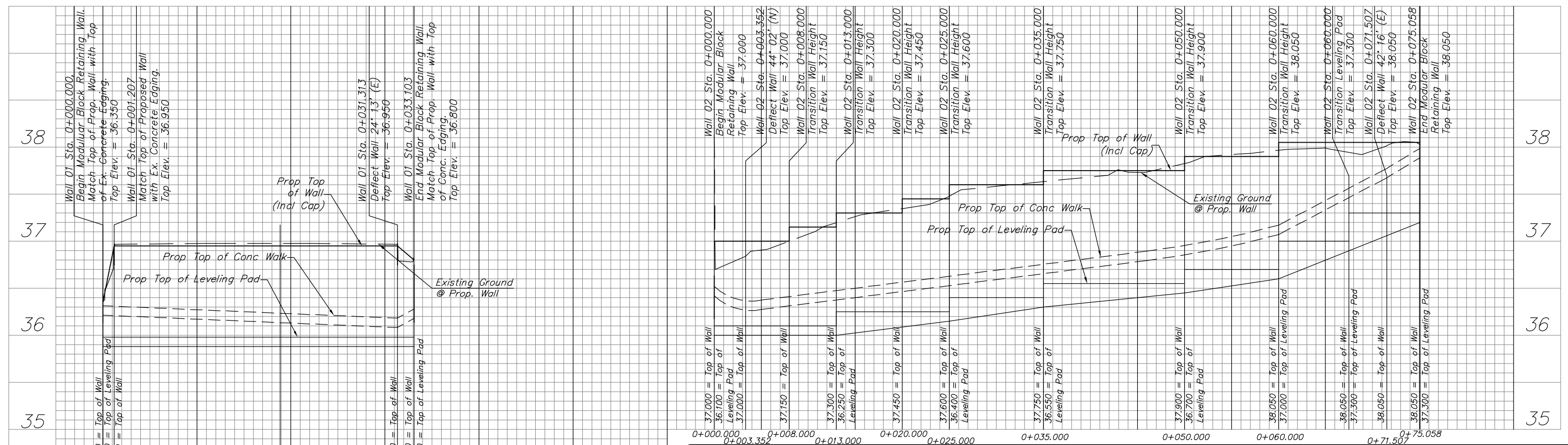


BENCHMARK
BM #2 - "□" SW Corner of SW Pump Isle NE
Corner of Hillside & Waterman
Sta. 0+436.899, 20.113m Rt.
Elev. = 36.268 SI Units (118.99 City Datum)

BENCHMARK
BM #3 - "□" South end of first step of Hillside
Baptist Church, NW Corner of Hillside &
English. Sta. 0+613.926, 11.170m Lt.
Elev. = 36.628 SI Units (120.17 City Datum)



KDOT METRIC



PROJECT NUMBER 472-83862		SHEET NAME WALL 01		ENGINEERING DIRECTORY F:\Hillside\Wall.dwg	
DESIGN STAFF	DRAWN STAFF	APPROVED JFB	DATE May 2006	SCALE Noted	BAUGHMAN NO 01-03-E947
CAPITAL IMPROVEMENT PROJECT MODULAR BLOCK WALL PLAN & PROFILE WALL 01 & WALL 02			BAUGHMAN COMPANY, P.A. ENGINEERING, SURVEYING, & PLANNING 316-262-7271 • 315 ELLIS • WICHITA, KANSAS 67211		