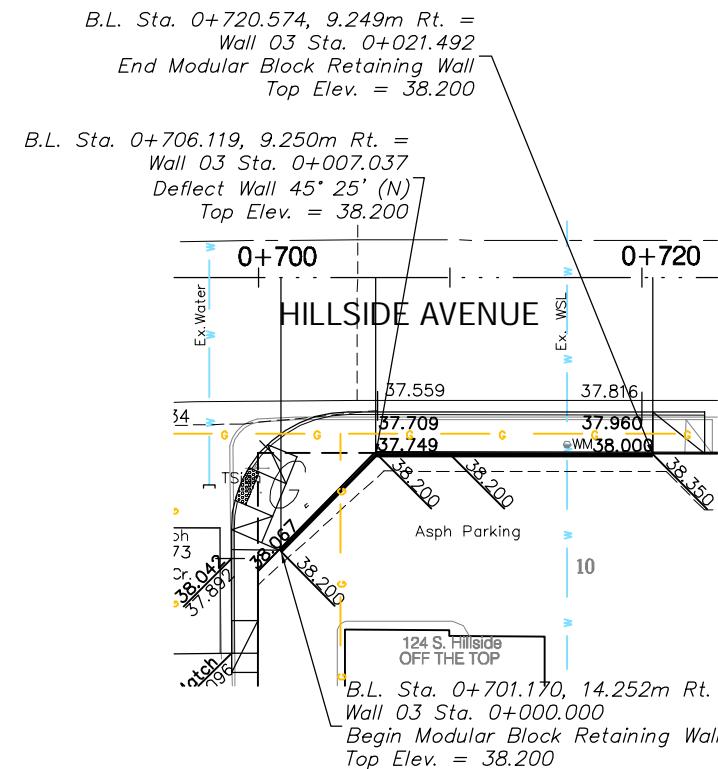


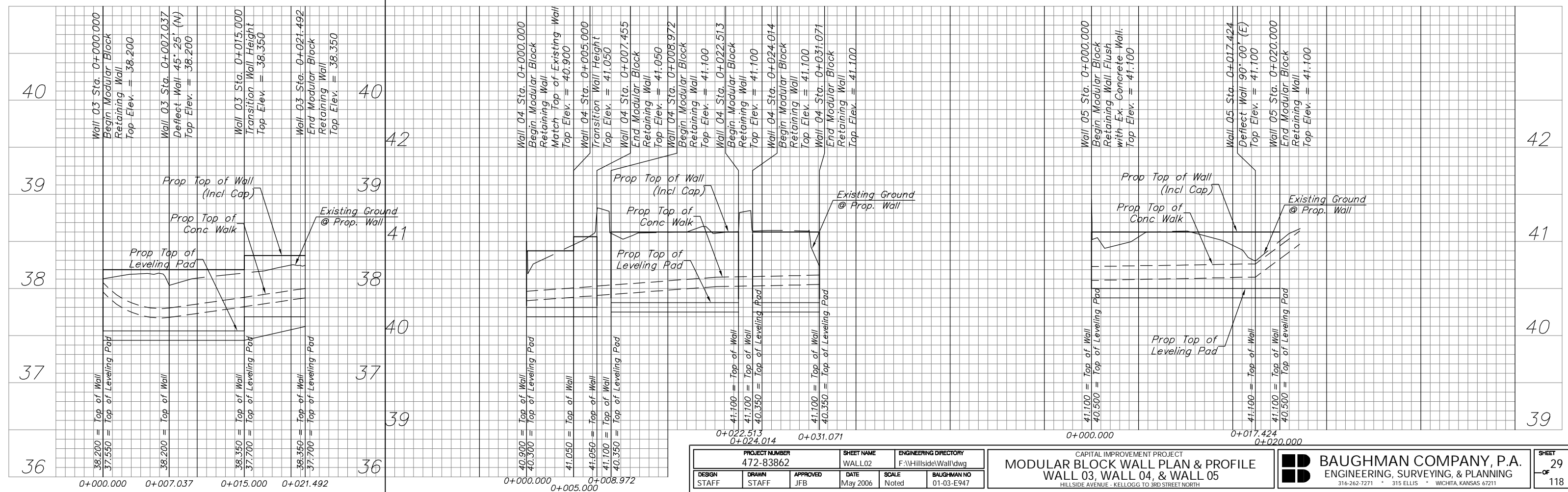
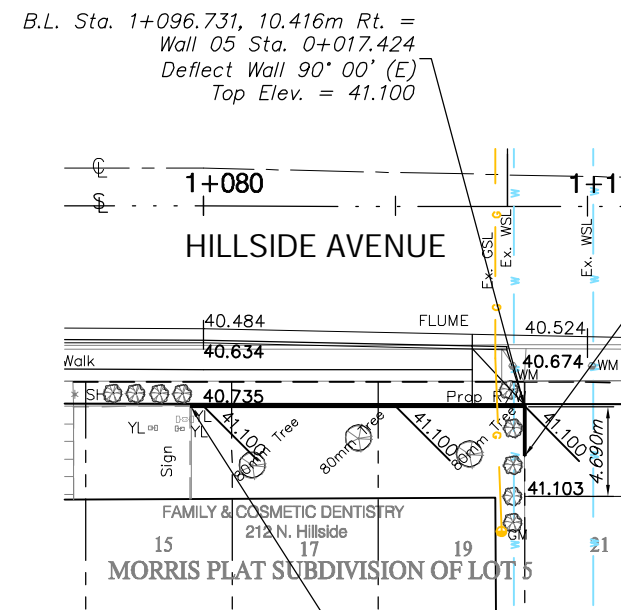
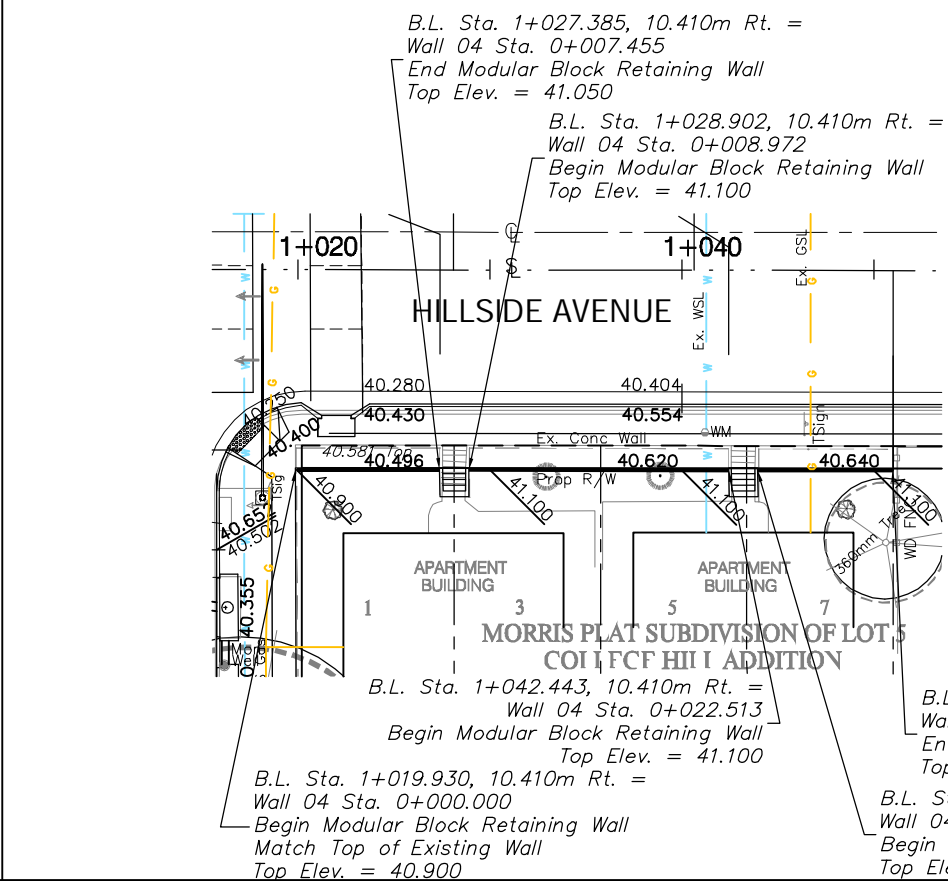


SCALE:
1:200 HORIZONTAL
1:20 VERTICAL

BENCHMARK
BM #5 - Top of Brick NW Corner of Brick Planter
NW Corner Bldg. #162 SE Corner of
Hillside & 1st. Sta. 0+988.819, 22.336m Rt.
Elev. = 40.685 SI Units (133.48 City Datum)



BENCHMARK
BM #4 - "C" Top of Curb of SW Parking Lot
NW Corner of Hillside & Douglas
Sta. 0+807.632, 9.048m Lt.
Elev. = 38.030 SI Units (124.77 City Datum)



PROJECT NUMBER 472-83862		SHEET NAME WALL02		ENGINEERING DIRECTORY F:\HillsideWall\dwg	
DESIGN STAFF	DRAWN STAFF	APPROVED JFB	DATE May 2006	SCALE Noted	BAUGHMAN NO 01-03-E947

CAPITAL IMPROVEMENT PROJECT
MODULAR BLOCK WALL PLAN & PROFILE
WALL 03, WALL 04, & WALL 05
HILLSIDE AVENUE - KELLOGG TO 3RD STREET NORTH

BAUGHMAN COMPANY, P.A.
ENGINEERING, SURVEYING, & PLANNING
316-262-7271 • 315 ELLIS • WICHITA, KANSAS 67211

SHEET 29 OF 118