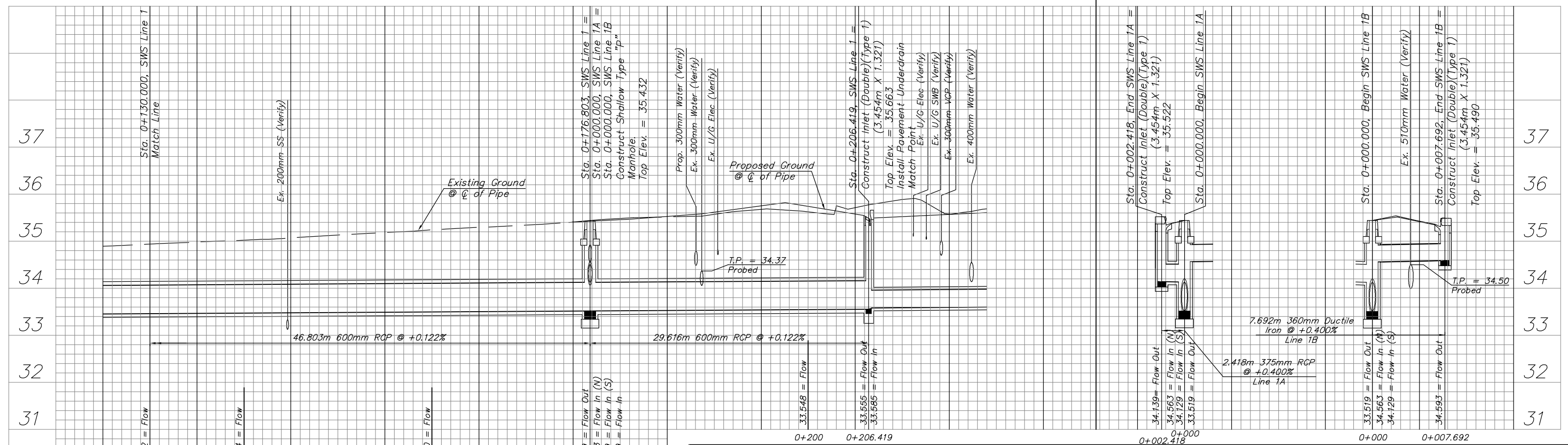
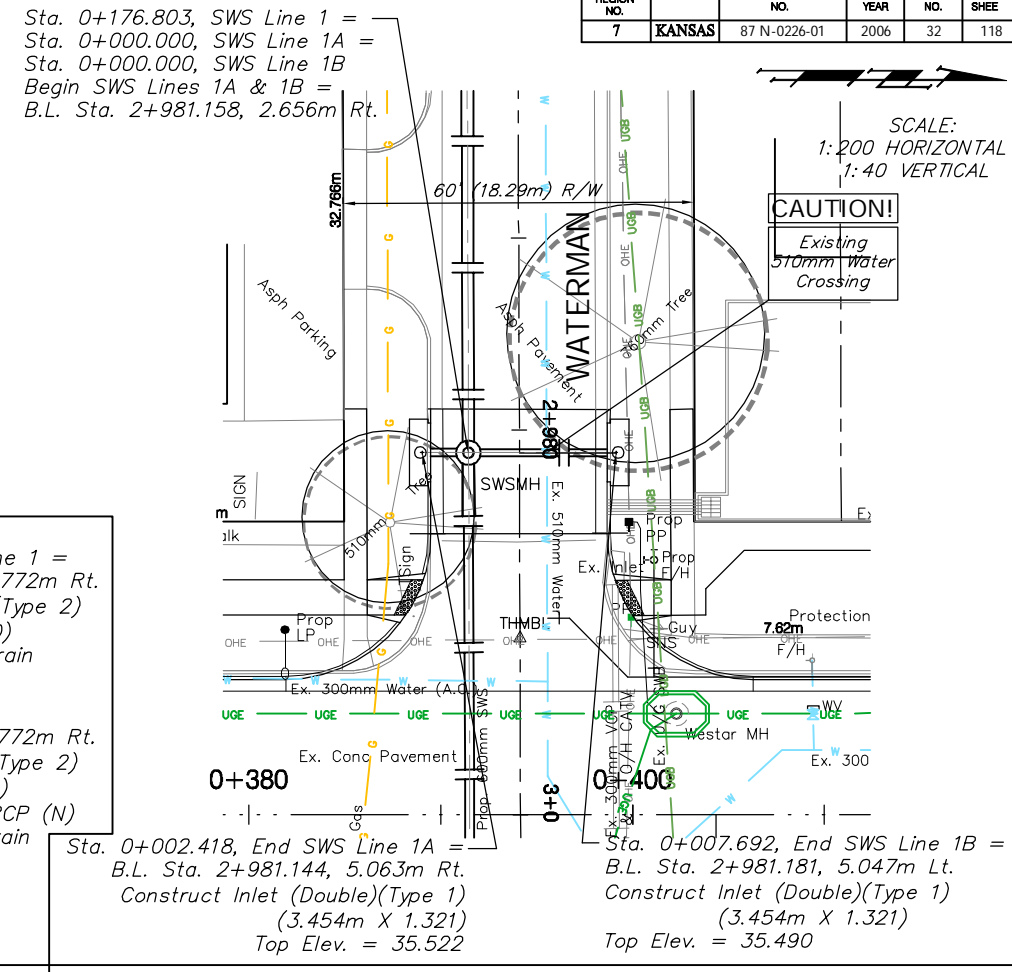
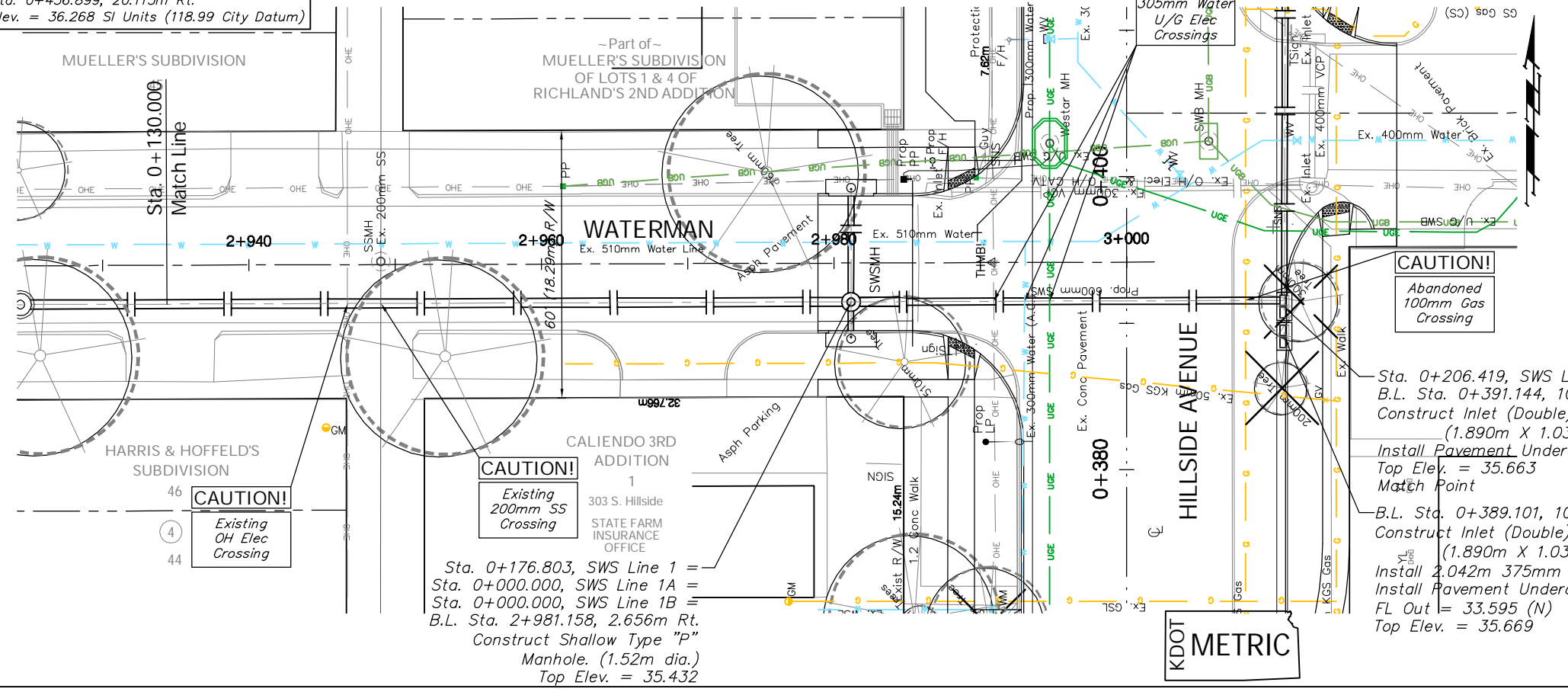


FHWA REGION NO.	STATE	PROJECT NO.	FISCAL YEAR	SHEET NO.	TOTL SHEE
7	KANSAS	87 N-0226-01	2006	32	118

BENCHMARK
 BM #2 - "C" SW Corner of SW Pump Isle NE
 Corner of Hillside & Waterman
 Sta. 0+436.899, 20.113m Rt.
 Elev. = 36.268 SI Units (118.99 City Datum)



PROJECT NUMBER 472-83862		SHEET NAME SWS02		ENGINEERING DIRECTORY F:\Hillside\Land\dwg	
DESIGN STAFF	DRAWN STAFF	APPROVED JFB	DATE May 2006	SCALE Noted	BAUGHMAN NO 01-03-E947

CAPITAL IMPROVEMENT PROJECT
STORM WATER SEWER PLAN & PROFILE
 LINE 1, LINE 1A, & LINE 1B
 HILLSIDE AVENUE - KELLOGG TO 3RD STREET NORTH

BAUGHMAN COMPANY, P.A.
 ENGINEERING, SURVEYING, & PLANNING
 316-262-7271 • 315 ELLIS • WICHITA, KANSAS 67211

SHEET 32 OF 118