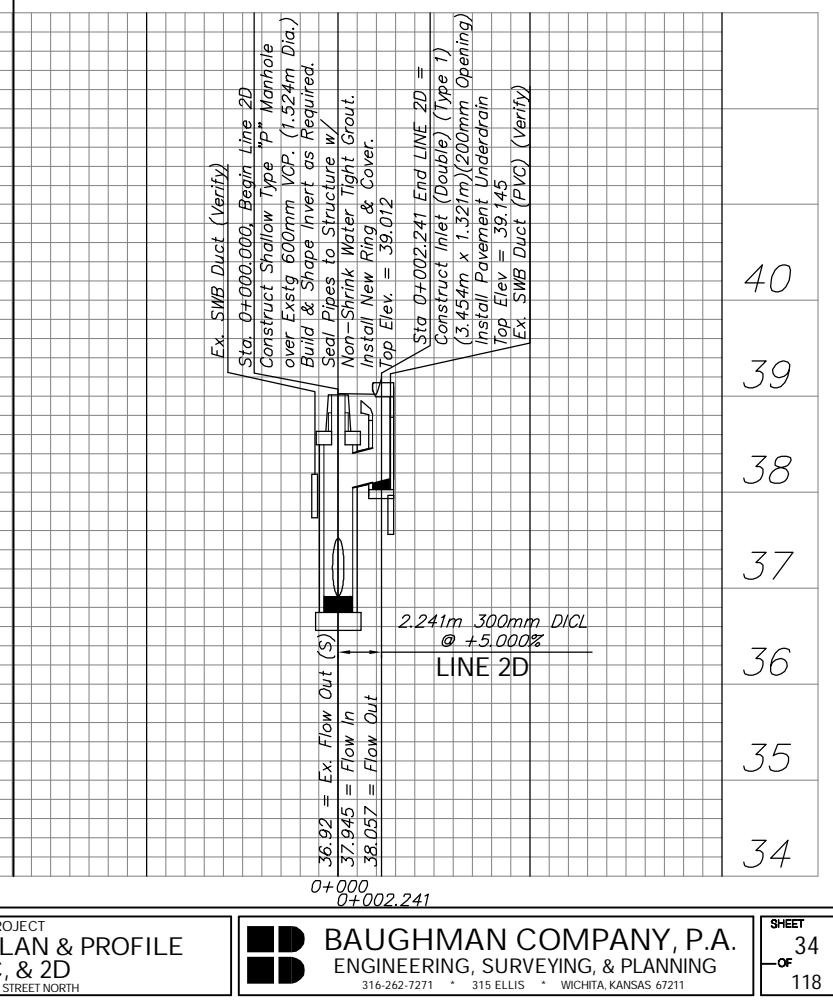
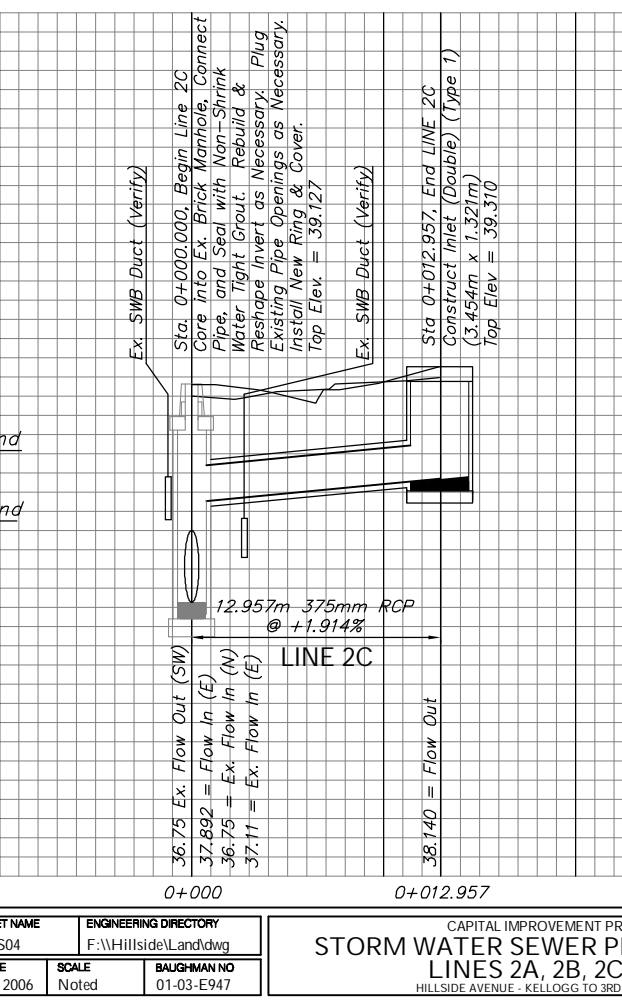
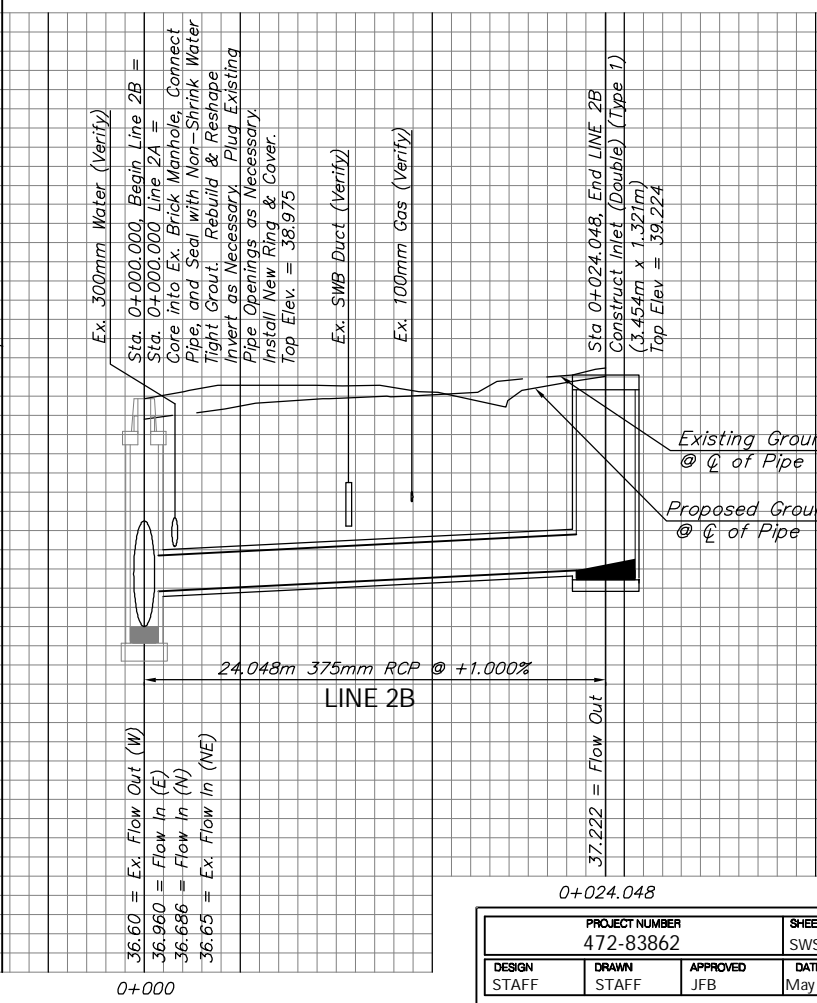
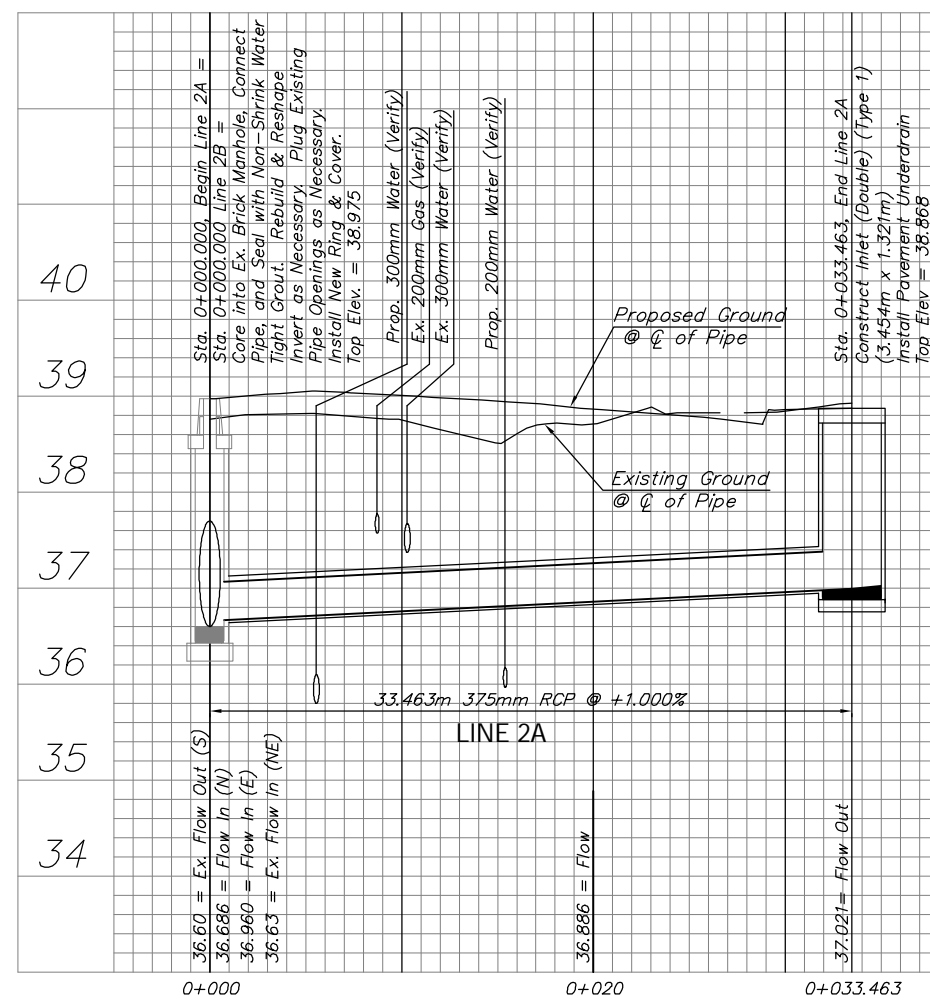


**BENCHMARK**  
BM #4 - "□" Top of Curb of SW Parking Lot NW Corner of Hillside & Douglas  
Sta. 0+807.632, 9.048m Lt.  
Elev. = 38.030 SI Units (124.77 City Datum)

**BENCHMARK**  
BM #4 - "□" Top of Curb of SW Parking Lot NW Corner of Hillside & Douglas  
Sta. 0+807.632, 9.048m Lt.  
Elev. = 38.030 SI Units (124.77 City Datum)



PROJECT NUMBER 472-83862		SHEET NAME SWS04		ENGINEERING DIRECTORY F:\Hillside\Land\dwg	
DESIGN STAFF	DRAWN STAFF	APPROVED JFB	DATE May 2006	SCALE Noted	BAUGHMAN NO 01-03-E947

CAPITAL IMPROVEMENT PROJECT  
**STORM WATER SEWER PLAN & PROFILE**  
LINES 2A, 2B, 2C, & 2D  
HILLSIDE AVENUE - KELLOGG TO 3RD STREET NORTH

**BAUGHMAN COMPANY, P.A.**  
ENGINEERING, SURVEYING, & PLANNING  
316-262-7271 • 315 ELLIS • WICHITA, KANSAS 67211

SHEET 34 OF 118