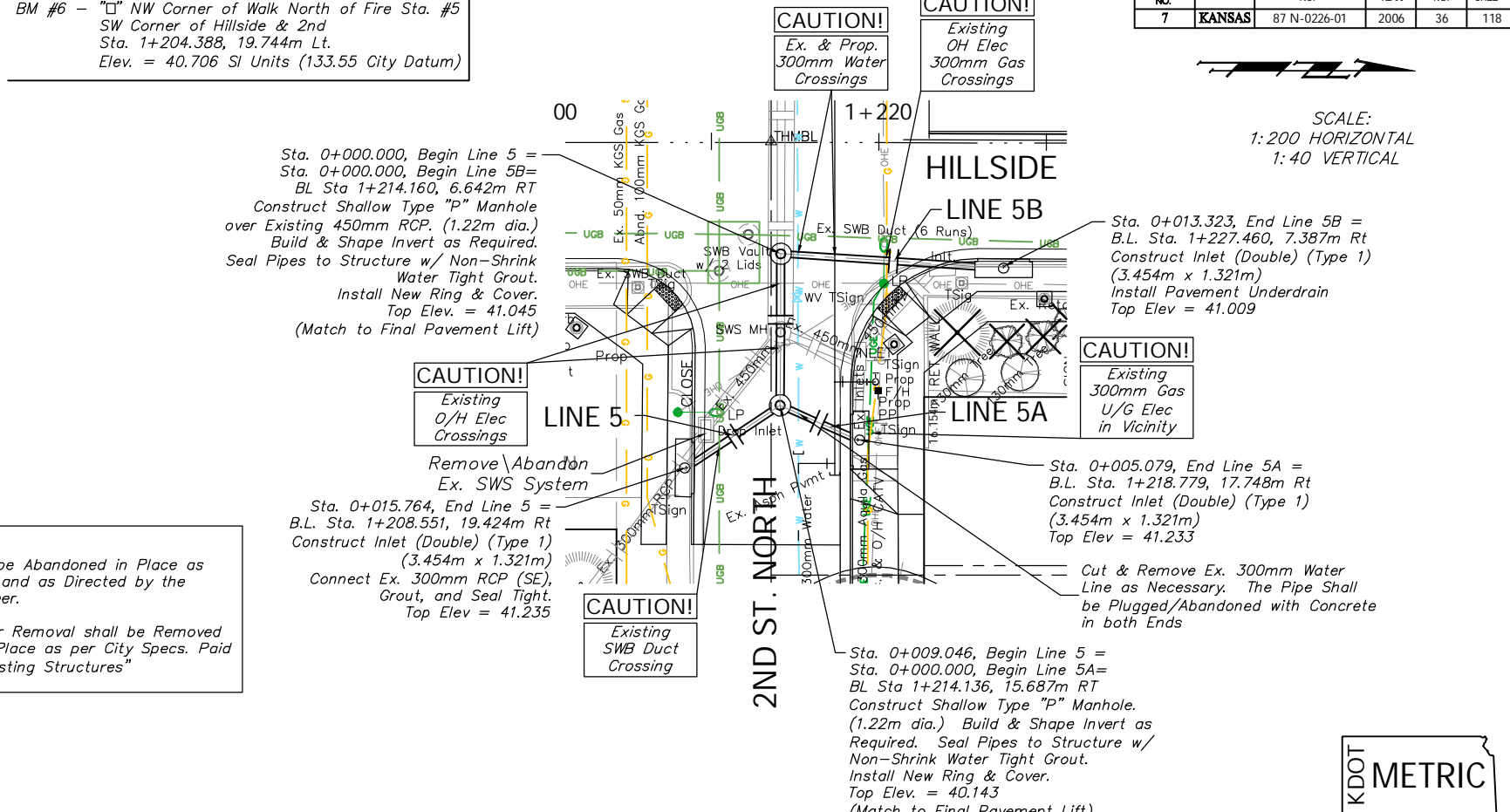
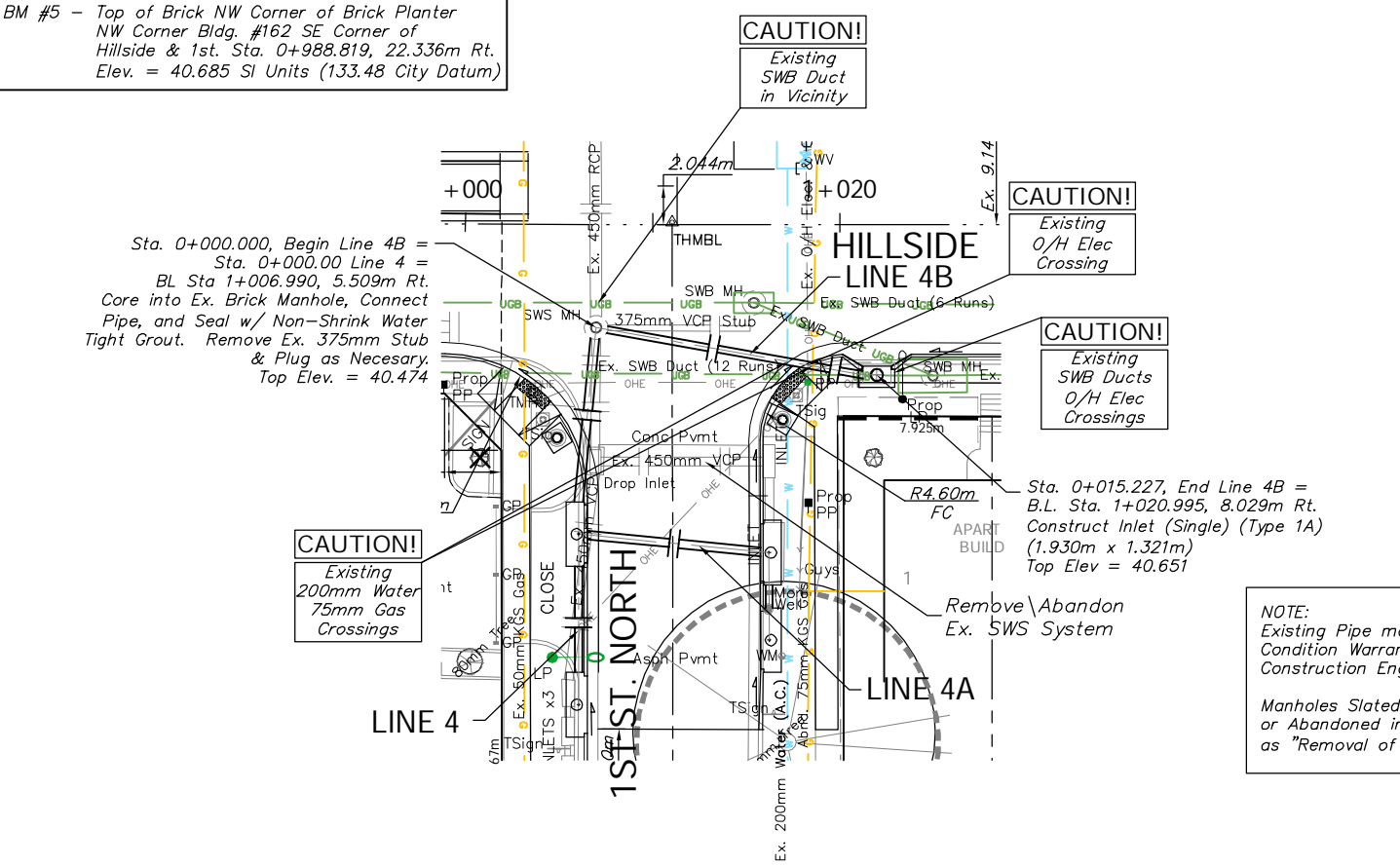


FHWA REGION NO.	STATE	PROJECT NO.	FISCAL YEAR	SHEET NO.	TOTL SHEE
7	KANSAS	87 N-0226-01	2006	36	118

**BENCHMARK**  
 BM #5 - Top of Brick NW Corner of Brick Planter NW Corner Bldg. #162 SE Corner of Hillside & 1st. Sta. 0+988.819, 22.336m Rt. Elev. = 40.685 SI Units (133.48 City Datum)

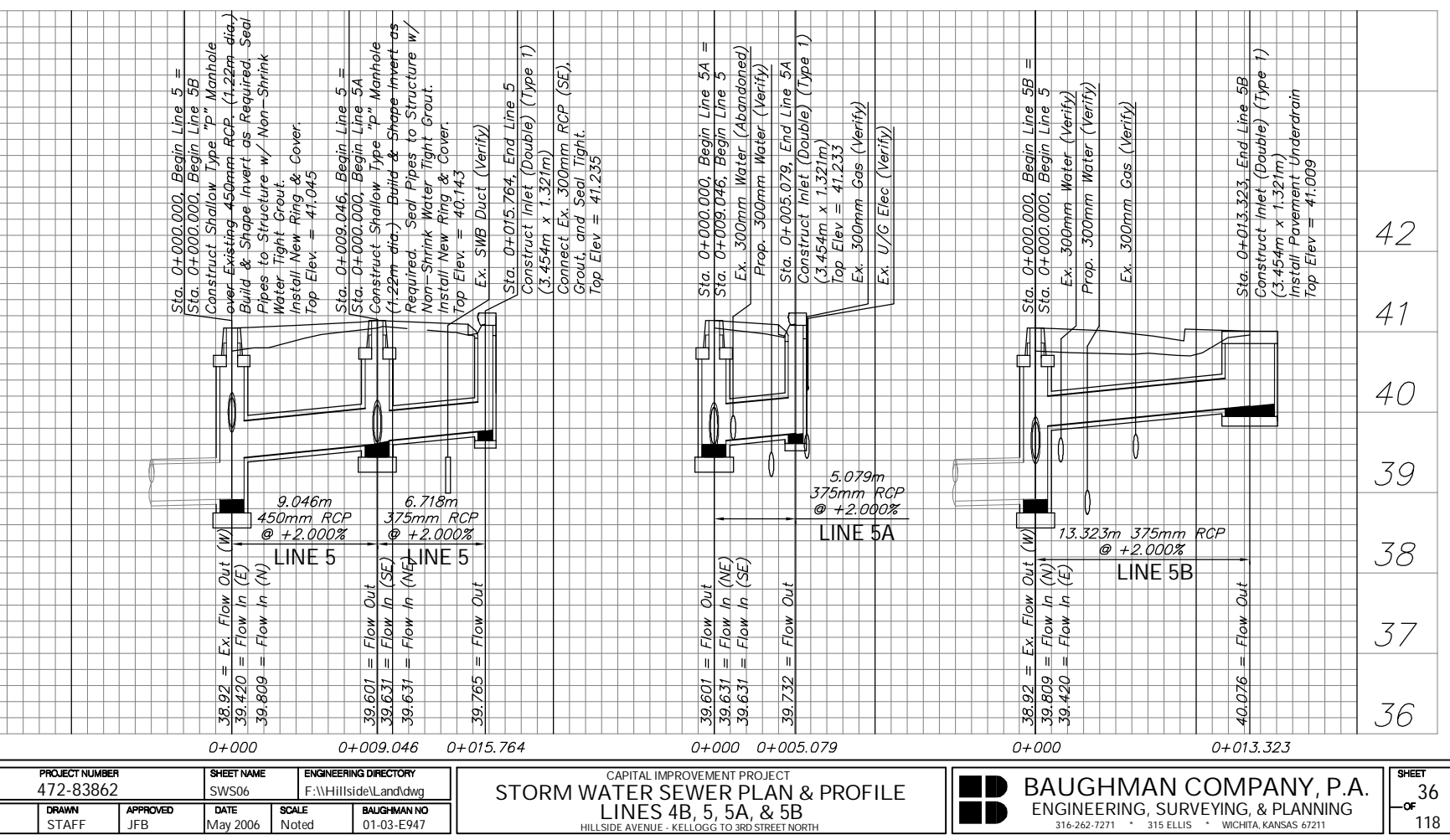
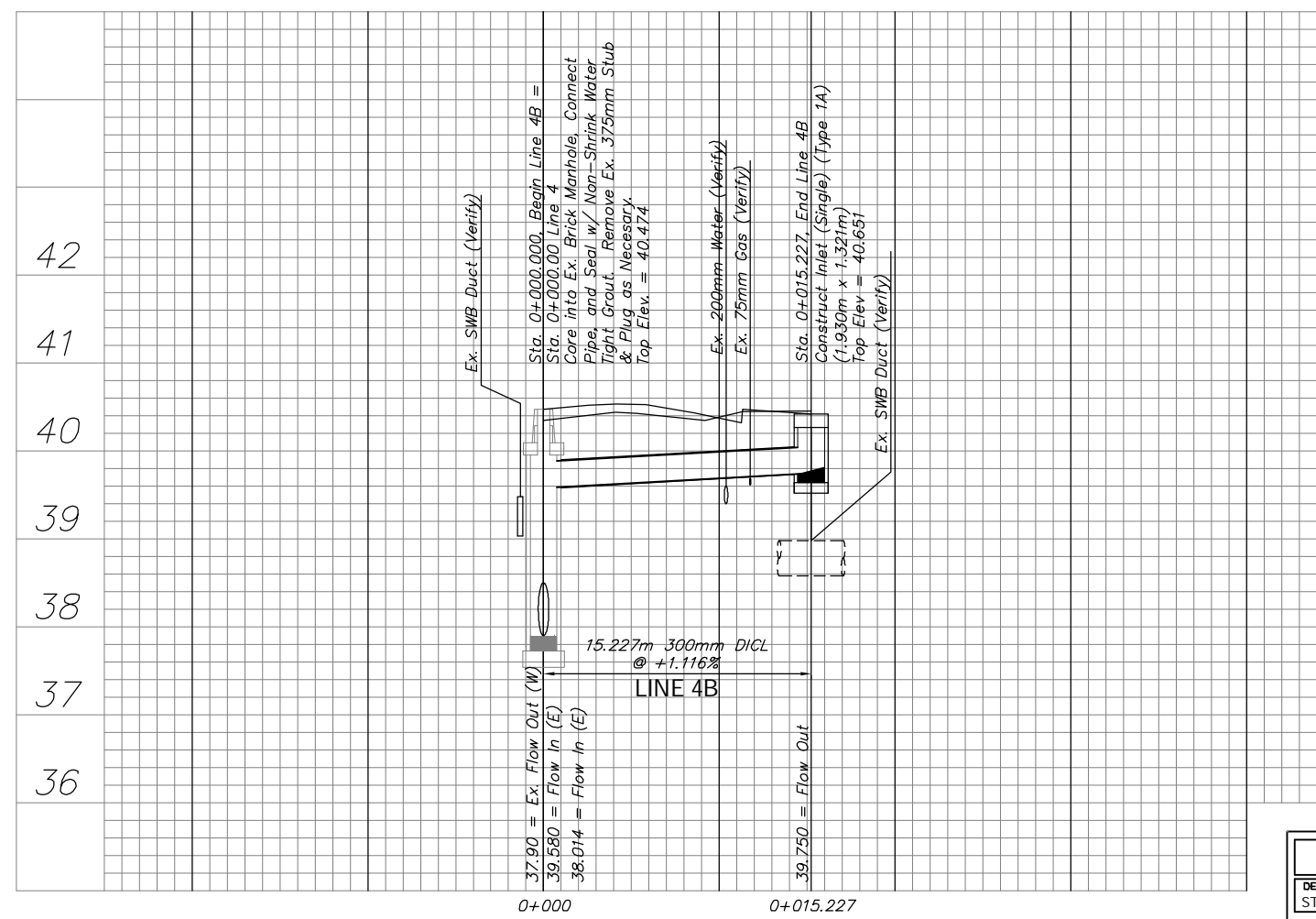
**BENCHMARK**  
 BM #6 - "□" NW Corner of Walk North of Fire Sta. #5 SW Corner of Hillside & 2nd Sta. 1+204.388, 19.744m Lt. Elev. = 40.706 SI Units (133.55 City Datum)



SCALE:  
 1:200 HORIZONTAL  
 1:40 VERTICAL

KDOT METRIC

**NOTE:**  
 Existing Pipe may be Abandoned in Place as Condition Warrants and as Directed by the Construction Engineer.  
 Manholes Slated for Removal shall be Removed or Abandoned in Place as per City Specs. Paid as "Removal of Existing Structures"



PROJECT NUMBER 472-83862	SHEET NAME SWS06	ENGINEERING DIRECTORY F:\Hillside\Land\dwg
DESIGN STAFF	DRAWN STAFF	APPROVED JFB
DATE May 2006	SCALE Noted	BAUGHMAN NO 01-03-E947

CAPITAL IMPROVEMENT PROJECT  
**STORM WATER SEWER PLAN & PROFILE**  
 LINES 4B, 5, 5A, & 5B  
 HILLSIDE AVENUE - KELLOGG TO 3RD STREET NORTH

**BAUGHMAN COMPANY, P.A.**  
 ENGINEERING, SURVEYING, & PLANNING  
 316-262-7271 • 315 ELLIS • WICHITA, KANSAS 67211