

PRECAST SLAB AND FLOOR REINFORCING

MARK	SIZE	W = 1.321m		W = 1.626m		W = 1.930m		W = 2.235m		W = 2.540m	
		NO.	LENGTH	NO.	LENGTH	NO.	LENGTH	NO.	LENGTH	NO.	LENGTH
a1	#M13	13	2.007m	13	2.616m	13	3.226m	13	3.835m	13	4.445m
* a2	#M13	4	1.829m	4	2.438m	4	3.048m	4	3.658m	4	4.267m
a3	#M13	23	1.245m	23	1.549m	23	1.854m	23	2.159m	23	2.464m
b1	#M13	1	2.972m	1	2.972m	1	2.972m	1	2.972m	1	2.972m
* b2	#M13	23	3.378m	29	3.378m	35	3.378m	41	3.378m	47	3.378m
x1	#M13	8	1.168m	8	1.270m	8	1.372m	8	1.473m	8	1.575m

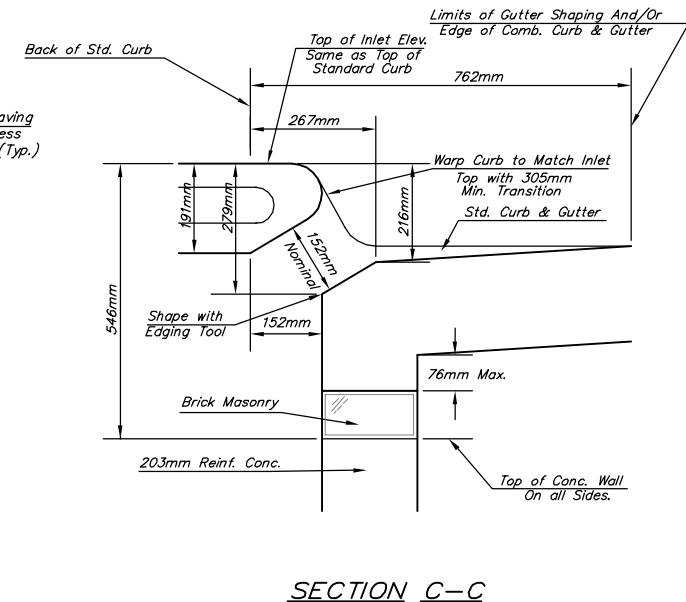
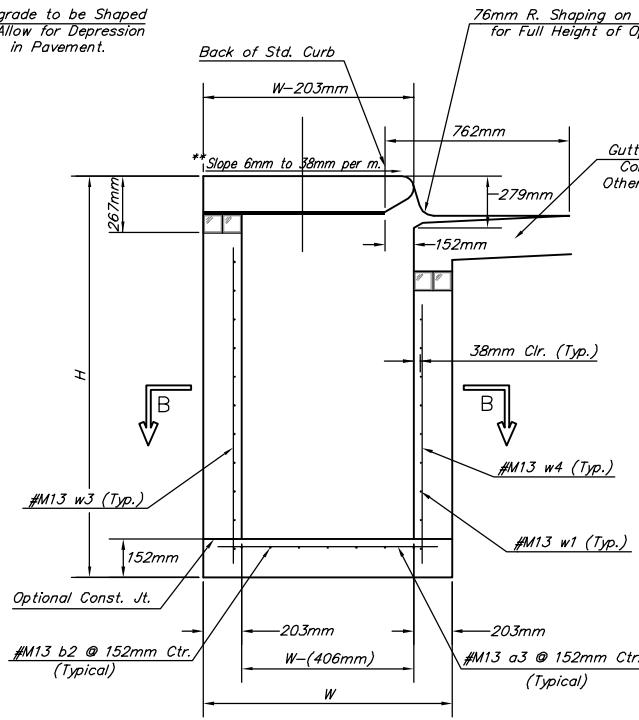
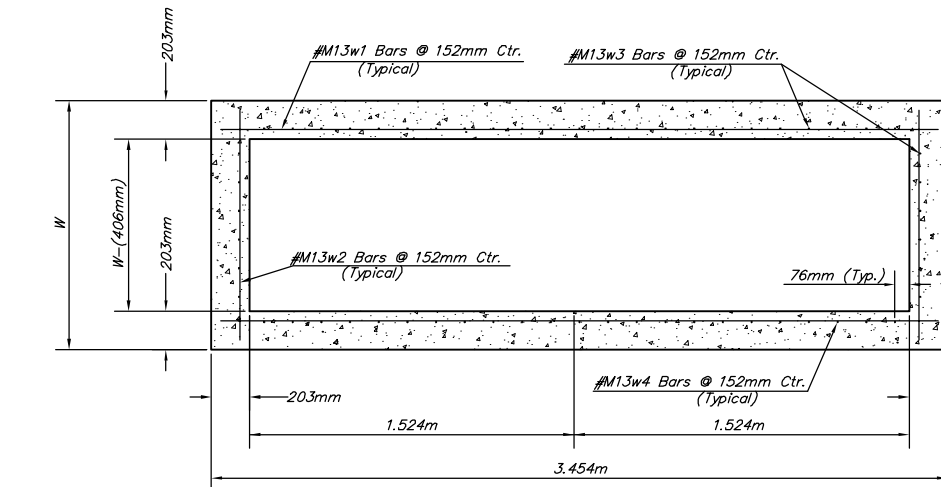
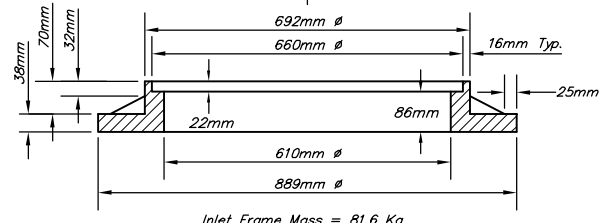
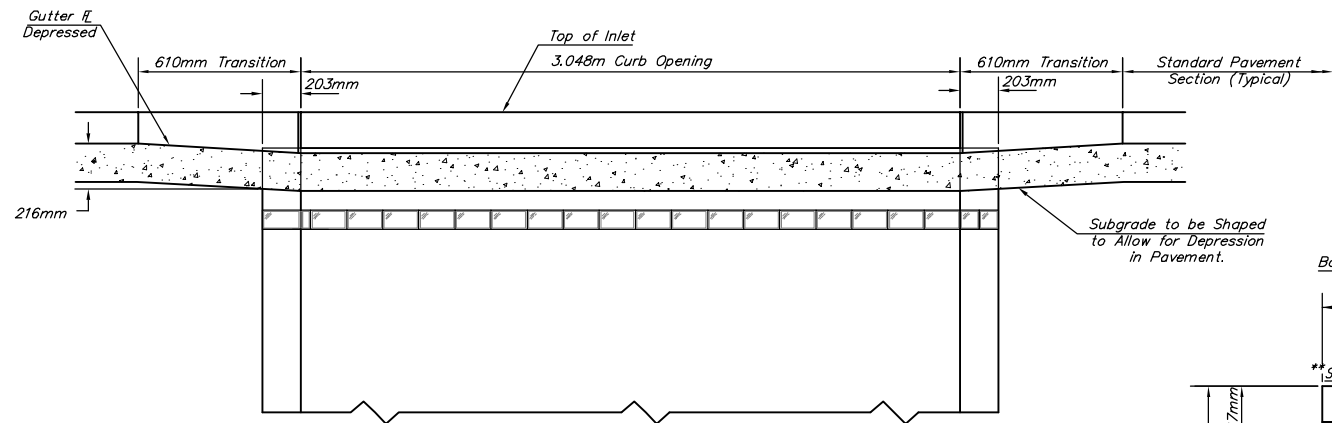
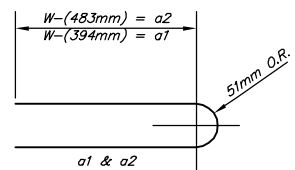
WALL REINFORCING

MARK	SIZE	W = 1.321m		W = 1.626m		W = 1.930m		W = 2.235m		W = 2.540m	
		NO.	LENGTH	NO.	LENGTH	NO.	LENGTH	NO.	LENGTH	NO.	LENGTH
w1	#M13	①	3.378m	①	3.378m	①	3.378m	①	3.378m	①	3.378m
w2	#M13	②	1.245m	②	1.550m	②	1.854m	②	2.159m	②	2.464m
w3	#M13	③	34	③	38	③	42	③	46	③	50
w4	#M13	④	22	④	22	④	22	④	22	④	22

\* Field Bend or Cut Reinforcing as Required for Clearance.  
 ① ((H - 572mm)/152mm) + ((H - 851mm)/152mm)  
 ② 2\*(H - 572mm)/152mm  
 ③ H - 327mm  
 ④ H - 622mm

STANDARD CURB INLET PRECAST TOPS

W	PRE-CAST TOP SIZE	PIPE SIZE	CU. M. CONC.
1.321m	1.118m x 3.454m x 191mm	533mm & SMALLER	0.63±
1.626m	1.422m x 3.454m x 191mm	610mm & 762mm	0.83±
1.930m	1.727m x 3.454m x 191mm	914mm & 1.067m	1.03±
2.235m	2.032m x 3.454m x 191mm	1.219m & 1.372m	1.23±
2.540m	2.337m x 3.454m x 191mm	1.524m & 1.676m	1.43±



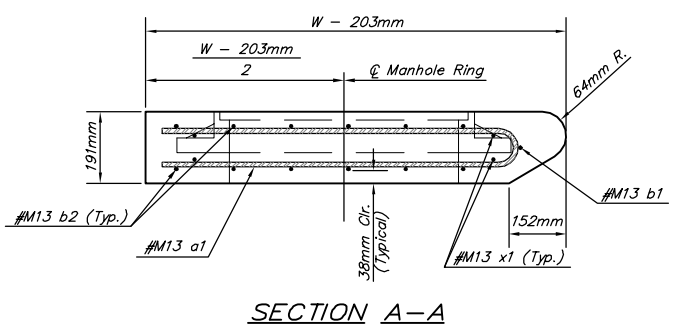
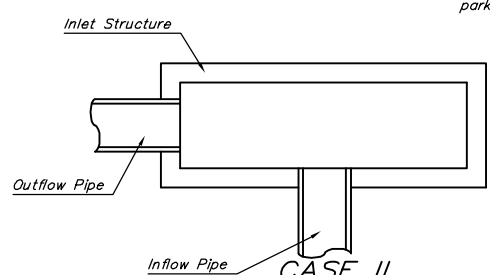
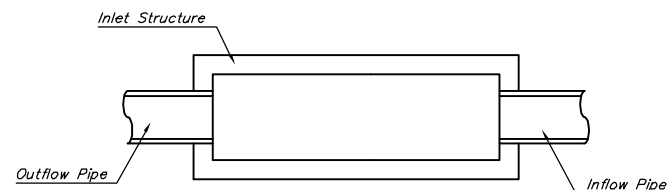
GENERAL NOTES:

Concrete shall be C.O.W. standard paving mix. All exposed edges shall be finished with an edging tool. Reinforcing bars shall be field bent or cut to clear pipes and inlet rings. All bars are #M13 bars @ 152mm spacing and shall have a minimum clearance of 38mm unless otherwise noted. Floors of inlet shall be shaped with 8 sack sand mix concrete to increase hydraulic efficiency such that the inlet will be self cleaning between all inlet and/or outlet pipe(s).

Concrete tops to be installed on thin mortar cushion to insure full support along walls. Concrete tops may be cast in place or precast.

The ends of all pipes installed in inlets shall be cut off flush with the inside face of the inlet wall.

NOTES:  
 \*\* Slope of inlet tops to match sidewalk of parking slopes within limits indicated



Revised - July 23, 1998  
 Revised - Feb. 16, 1989