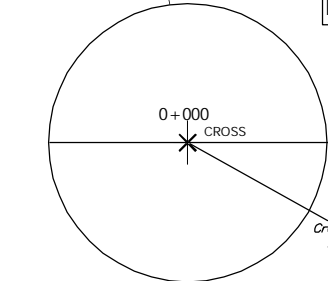
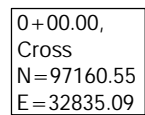
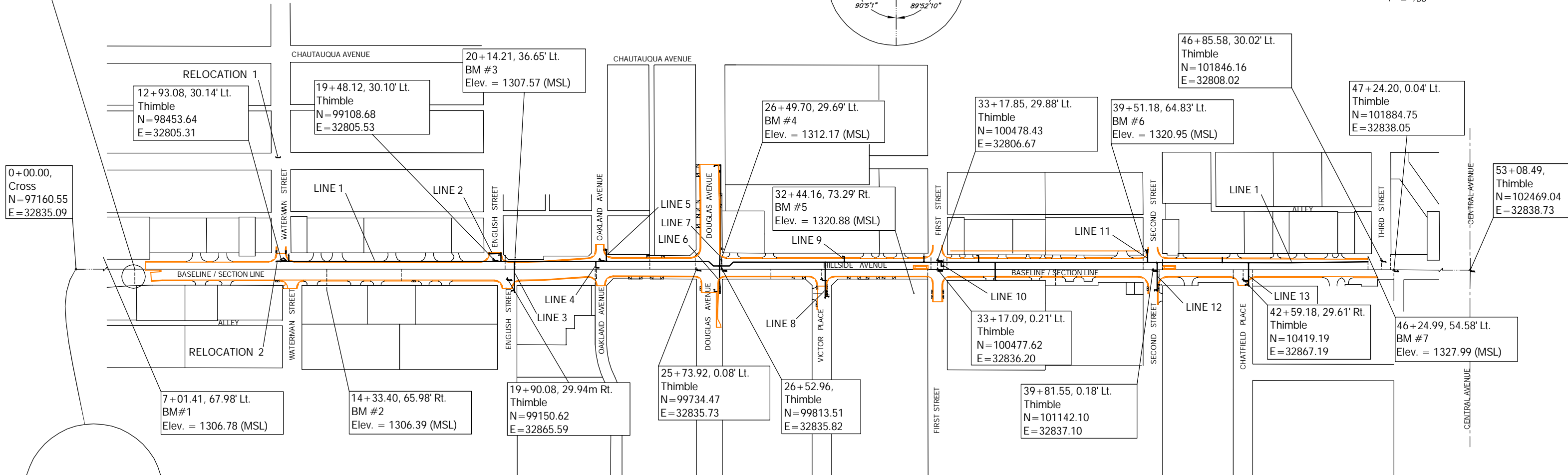
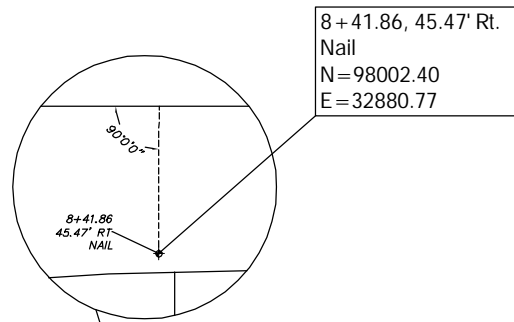
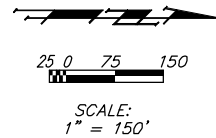
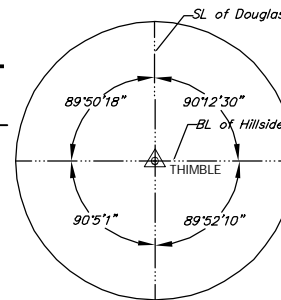
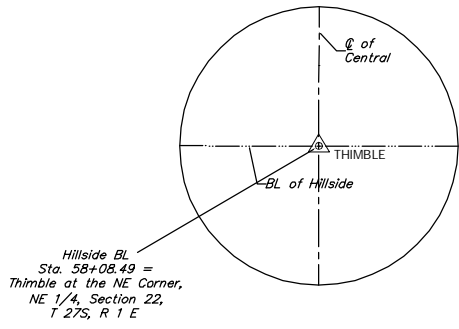


KEYSHEET



Hillside BL
Sta. 0+000.000 =
Cross at the SE Corner,
SE 1/4, Section 22,
T 27S, R 1 E



BENCHMARKS

- BM #1 - Top of Curb SW Corner of Parking Lot NE Corner of Hillside and Lewis Sta. 7+01.40, 68.14' Rt. Elev. = 1306.78 MSL N=29828.32, E=10028.90
- BM #2 - SW Corner of SW Pump Isle NE Corner of Hillside & Waterman Sta. 14+33.40, 65.98' Rt. Elev. = 1306.39 MSL N=30051.43, E=10028.36
- BM #3 - South end of first step of Hillside Baptist Church, NW Corner of Hillside & English. Sta. 20+14.21, 36.65' Lt. Elev. = 1307.57 MSL N=30228.47, E=9997.12
- BM #4 - Top of Curb of SW Parking Lot NW Corner of Hillside & Douglas Sta. 26+49.70, 29.69' Lt. Elev. = 1312.17 MSL N=30422.11, E=9999.29
- BM #5 - Top of Brick NW Corner of Brick Planter NW Corner Bldg. #162 SE Corner of Hillside & 1st. Sta. 32+43.83, 73.26' Rt. Elev. = 1320.88 MSL N=30603.25, E=10030.78
- BM #6 - NW Corner of Walk North of Fire Sta. #3 SW Corner of Hillside & 2nd Sta. 39+51.28, 64.79' Lt. Elev. = 1320.95 MSL N=30818.88, E=10008.75
- BM #7 - NE Corner of first step of Bldg. #357 SW Corner of Hillside & 3rd Sta. 46+24.29, 54.58' Lt. Elev. = 1327.99 MSL N=31023.96, E=9992.34

Baseline = Section Line, Established Using Section Line Thimbles.

PROJECT NUMBER 448-89557		SHEET NAME Keysheet		ENGINEERING DIRECTORY F:\Eng\Hillside\Water	
DESIGN ATD	DRAWN ATD	APPROVED JFB	DATE May 2006	SCALE NOTED	BAUGHMAN NO 01-03-E947
HILLSIDE WATERLINE KEYSHEET				CAPITAL IMPROVEMENT PROJECT HILLSIDE AVENUE - KELLOGG TO 3RD STREET NORTH	
BAUGHMAN COMPANY, P.A.				ENGINEERING, SURVEYING, & PLANNING	
316-262-7271				315 ELLIS WICHITA, KANSAS 67211	
					SHEET 44 OF 118