

BENCHMARKS:
 BM #2 - SW Corner of SW Pump Isle NE
 Corner of Hillside & Waterman
 Sta. 14+33.38, 66.00 feet Rt.
 Elev. = 1306.39 MSL

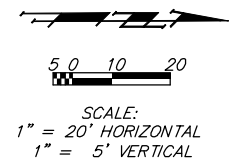
BM #3 - South end of first step of Hillside
 Baptist Church, NW Corner of Hillside &
 English. Sta. 20+14.20, 36.65 feet Lt.
 Elev. = 1307.57 MSL

W.L. Sta. 6+77.00, Line 1 =
 W.L. Sta. 0+00.00, Begin Line 2=
 B.L. Sta. 19+70.66, 23.78' Lt.
 Install 1-12" x 8" CIMJ Anchored Tee (W)
 Install 1-8" Valve Assy.
 (Gate Valve)(W)
 Valve Box Elev. = 1305.57

W.L. Sta. 7+18.50, Line 1 =
 W.L. Sta. 0+00.00, Begin Line 3=
 B.L. Sta. 20+12.16, 23.80' Lt.
 Install 1-12" x 8" CIMJ Tee (E)
 Install 1-8" Anch Valve Assy.
 (Gate Valve)(E)
 Install 1-12" Valve Assy
 (Butterfly Valve)(N)
 Valve Box Elev. = 1306.37 N and 1306.00 E

Abandon Existing 12" Water Line In Place In
 Accordance With City of Wichita Specs. Cap All
 Loose Ends. All Services Must Be Connected
 To New Main Prior To Abandonment.

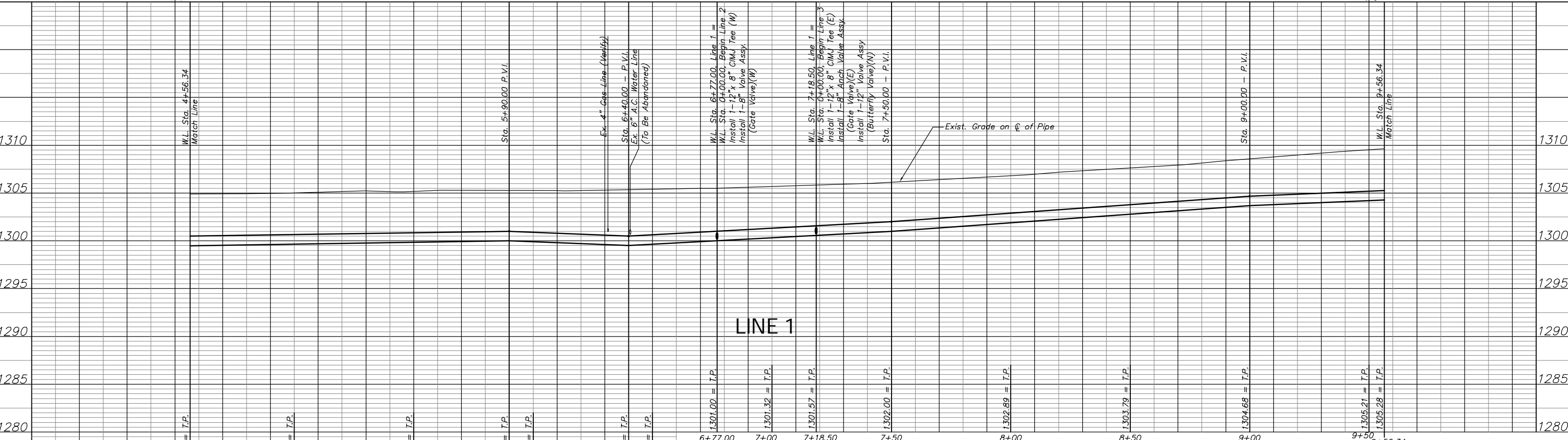
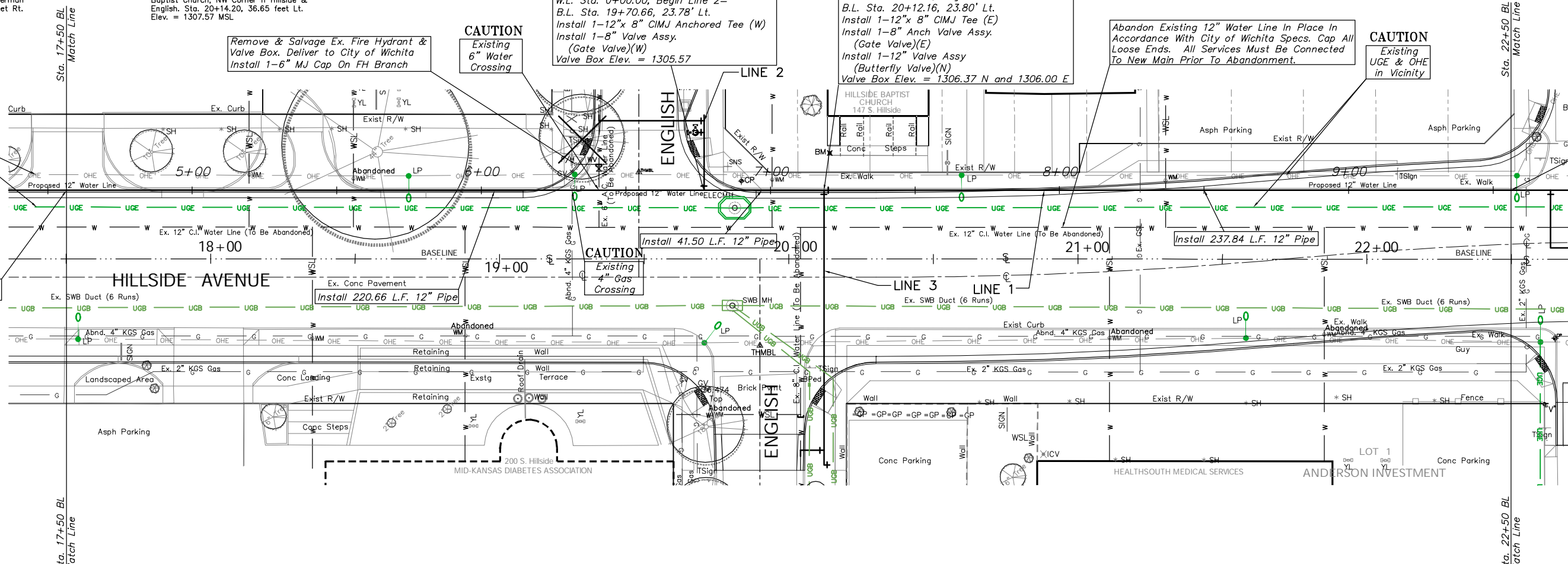
CAUTION
 Existing
 UGE & OHE
 in Vicinity



W.L. Sta. 9+56.34
 Match Line

Note:
 See Water Meter
 Table For Service
 Locations.

CAUTION
 Existing
 UGE & OHE
 in Vicinity



PROJECT NUMBER 448-89557		SHEET NAME H202		ENGINEERING DIRECTORY F:\Eng\Hillside\Water	
DESIGN ATD		DRAWN ATD		APPROVED JFB	
DATE May 2006		SCALE NOTED		BAUGHMAN NO 01-03-E947	

CAPITAL IMPROVEMENT PROJECT
HILLSIDE WATERLINE IMPROVEMENTS
 Line 1, W.L. Sta. 4+56.34 to W.L. Sta. 9+56.34
 HILLSIDE AVENUE - KELLOGG TO 3RD STREET NORTH

BAUGHMAN COMPANY, P.A.		
ENGINEERING, SURVEYING, & PLANNING		
316-262-7271 • 315 ELLIS • WICHITA, KANSAS 67211		

SHEET
48
OF
118