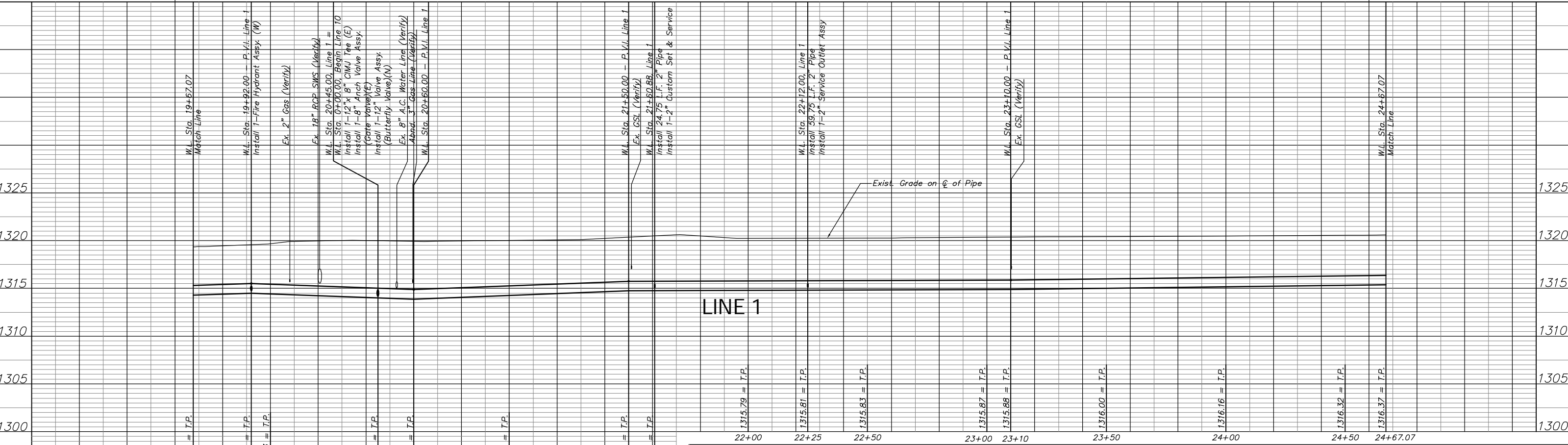
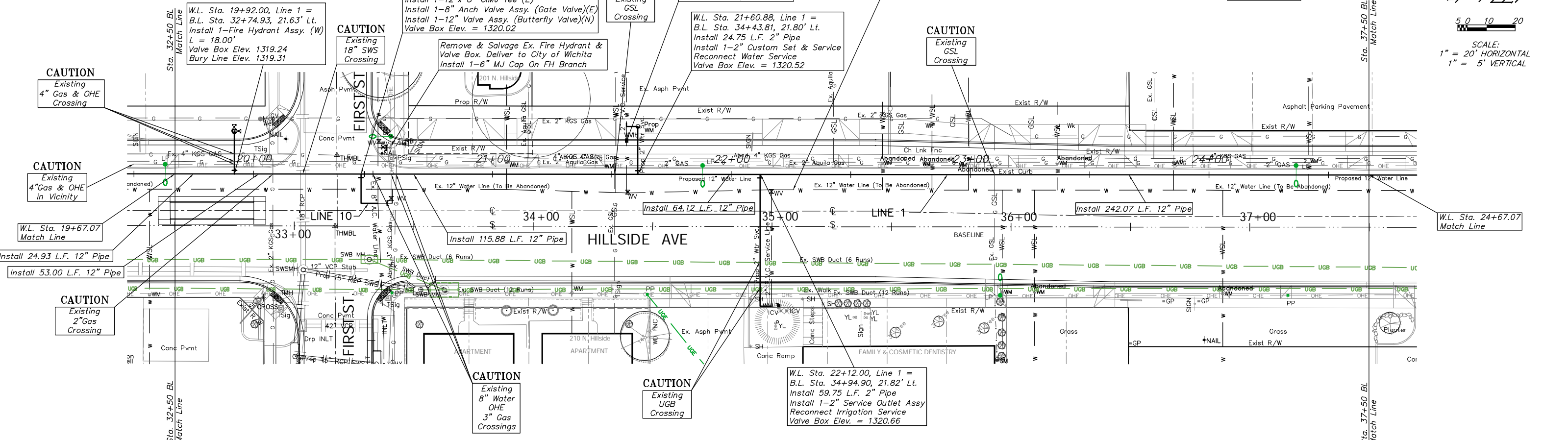
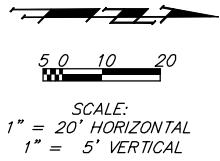


BENCHMARKS:

BM #5 - Top of Brick NW Corner of Brick Planter NW Corner Bldg. #162 SE Corner of Hillside & 1st. Sta. 32+43.83, 73.26 feet Rt. Elev. = 1320.88 MSL

BM #6 - NW Corner of Walk North of Fire Sta. #5 SW Corner of Hillside & 2nd. Sta. 39+51.28, 64.79 feet Lt. Elev. = 1320.95 MSL

Note:
See Water Meter Table For Service Locations.



PROJECT NUMBER 448-89557		SHEET NAME H205		ENGINEERING DIRECTORY F:\Eng\Hillside\Water	
DESIGN ATD	DRAWN ATD	APPROVED JFB	DATE May 2006	SCALE NOTED	BAUGHMAN NO 01-03-E947

CAPITAL IMPROVEMENT PROJECT

HILLSIDE WATERLINE IMPROVEMENTS

Line 1, W.L. Sta. 19+67.07 to W.L. Sta. 24+67.07

HILLSIDE AVENUE - KELLOGG TO 3RD STREET NORTH

BAUGHMAN COMPANY, P.A.

ENGINEERING, SURVEYING, & PLANNING

316-262-7271 • 315 ELLIS • WICHITA, KANSAS 67211

SHEET
OF
51
118