

BENCHMARKS:

- BM #1 - 4" Top of Curb SW Corner of Parking Lot NE Corner of Hillside and Lewis Sta. 7+01.40, 68.14 feet Rt. Elev. = 1306.78 MSL
- BM #2 - 4" SW Corner of SW Pump Isle NE Corner of Hillside & Waterman Sta. 14+33.38, 66.00 feet Rt. Elev. = 1306.39 MSL
- BM #3 - 4" South end of first step of Hillside Baptist Church, NW Corner if Hillside & English. Sta. 20+14.20, 36.65 feet Lt. Elev. = 1307.57 MSL

W.L. Sta. 0+00.00, Begin Line 2 =
W.L. Sta. 6+77.00, Line 1 =
B.L. Sta. 19+70.66, 23.78' Lt.
Connect to Valve on Line 1.
Extend 8" Water Main West.

W.L. Sta. 0+60.36, Line 2 =
B.L. Sta. 19+34.30, 43.78' Lt.
Install 1-6" 90° CIMJ Bend (W)
Connect to Existing 6" Water Line
Install 1-6" MJ Cap (E)

Install 36.36 L.F. 6" Pipe
Swabbed with Chlorine

W.L. Sta. 0+24.00, Line 2 =
B.L. Sta. 19+81.00, 47.78' Lt.
Install 1-8"x 6" CIMJ
Anchored Tee (S)
Install 1-8" Plug (W)
Extend 6" Water Main South.
Valve Box Elev. 1305.70

W.L. Sta. 0+20.00, Line 2 =
B.L. Sta. 19+70.66, 43.78' Lt.
Install 1-Fire Hydrant Assy. (S)
L = 3.00'
Valve Box Elev. 1305.70
Bury Line Elev. 1305.60

Install 20.00 L.F. 8" Pipe

W.L. Sta. 0+00.00, Begin Line 3=
W.L. Sta. 7+18.50, Line 1 =
B.L. Sta. 20+12.16, 23.80' Lt.
Connect to Valve on Line 1.
Extend 8" Water Main East.

CAUTION
Existing
UGE
12" Water
Crossings

Install 90.00 L.F. 8" Pipe
CAUTION
Existing
4" Gas
OHE
Crossings

W.L. Sta. 0+90.00, Line 3 =
B.L. Sta. 20+12.16, 66.21' Rt.
Install 1-8" CIMJ Anchored Tee (S)
Install 1-8" Valve Assy. (Gate Valve)(S)
Install 5' L.F. 8" DICL Pipe (E)
Install 1-2" Blowoff Assy (E)
Extend 8" Water Main South.
Valve Box Elev. = 1307.75

CAUTION
Existing
UGB
Crossing

Install 8.12 L.F. 8" DICL Pipe
Swabbed with Chlorine

W.L. Sta. 0+98.12, Line 3 =
B.L. Sta. 20+04.12, 66.21' Rt.
Install 1-8" 90° CIMJ Bend (E)
Connect to Existing 8" Water Line
Install 1-8" MJ Cap (W)

Install 20.00 L.F. 8" Pipe
Swabbed with Chlorine

W.L. Sta. 0+00.00, Begin Line 4=
W.L. Sta. 9+69.88, Line 1 =
B.L. Sta. 22+63.53, 23.90' Lt.
Connect to Valve on Line 1.
Extend 8" Water Main East.

CAUTION
Existing
UGE
Crossing

W.L. Sta. 0+29.60, Line 4 =
B.L. Sta. 22+73.13, 3.91' Lt.
Install 1-8" 90° CIMJ Bend (E)
Connect to Existing 8" Water Line
Install 1-8" MJ Cap (W)

CAUTION
Existing
12" Water
Crossing

W.L. Sta. 0+20.00, Line 4 =
B.L. Sta. 22+63.53, 3.91' Lt.
Install 1-8" 90° CIMJ Bend (N)
Extend 8" Water Main North.

Install 9.60 L.F. 8" DICL Pipe
Swabbed with Chlorine

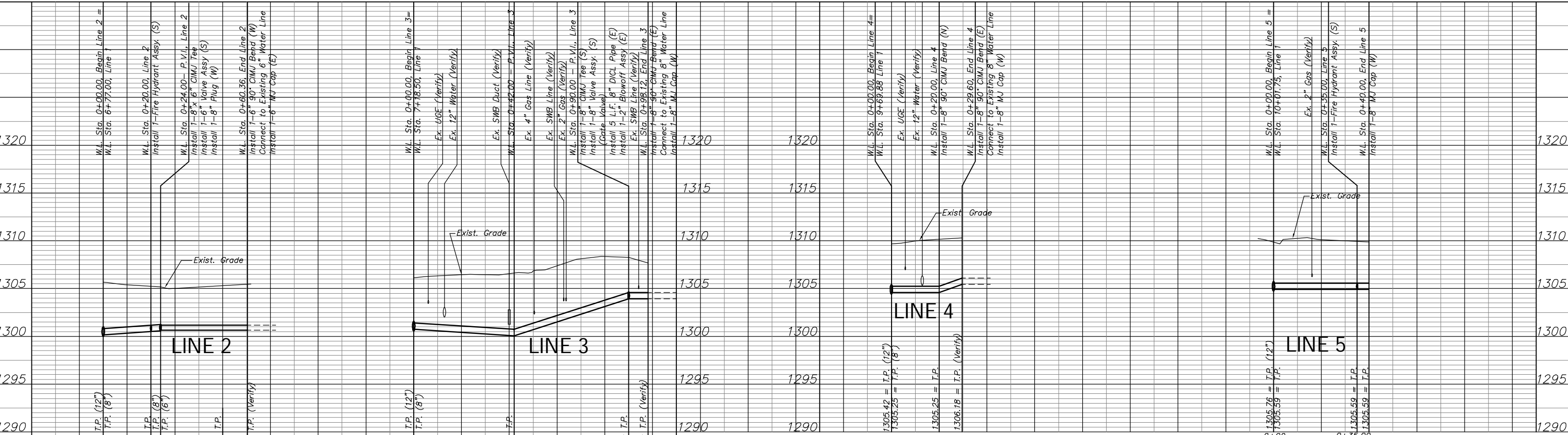
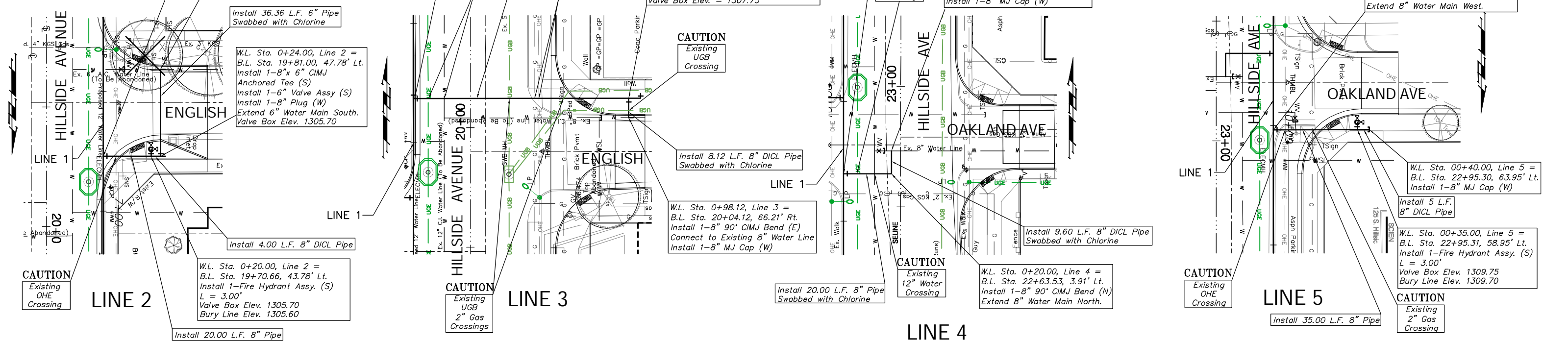
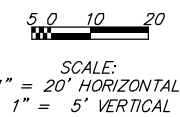
W.L. Sta. 0+00.00, Begin Line 5 =
W.L. Sta. 10+01.75, Line 1 =
B.L. Sta. 22+95.40, 23.91' Lt.
Connect to Valve on Line 1.
Extend 8" Water Main West.

W.L. Sta. 00+40.00, Line 5 =
B.L. Sta. 22+95.30, 63.95' Lt.
Install 1-8" MJ Cap (W)

Install 5 L.F.
8" DICL Pipe
W.L. Sta. 00+35.00, Line 5 =
B.L. Sta. 22+95.31, 58.95' Lt.
Install 1-Fire Hydrant Assy. (S)
L = 3.00'
Valve Box Elev. 1309.75
Bury Line Elev. 1309.70

CAUTION
Existing
2" Gas
Crossing

Install 35.00 L.F. 8" Pipe



PROJECT NUMBER 448-89557		SHEET NAME H208		ENGINEERING DIRECTORY F:\Eng\Hillside\Water	
DESIGN ATD	DRAWN ATD	APPROVED JFB	DATE May 2006	SCALE NOTED	BAUGHMAN NO 01-03-E947

CAPITAL IMPROVEMENT PROJECT
HILLSIDE WATERLINE IMPROVEMENTS
Line 2, Line 3, Line 4, & Line 5
HILLSIDE AVENUE - KELLOGG TO 3RD STREET NORTH

BAUGHMAN COMPANY, P.A.		SHEET 54
ENGINEERING, SURVEYING, & PLANNING		OF 118
316-262-7271 • 315 ELLIS • WICHITA, KANSAS 67211		