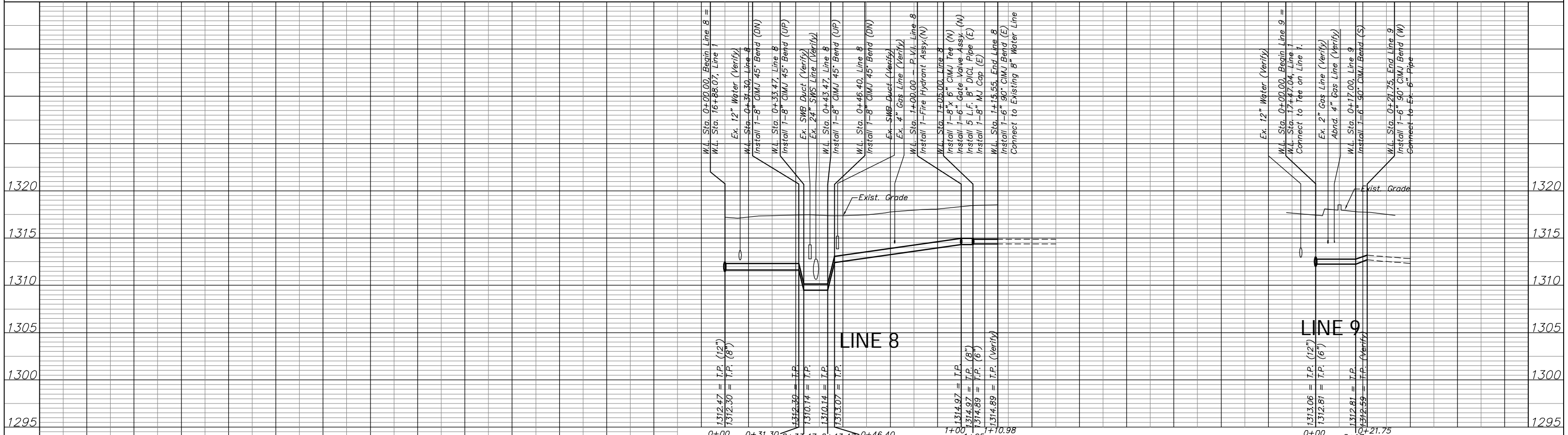
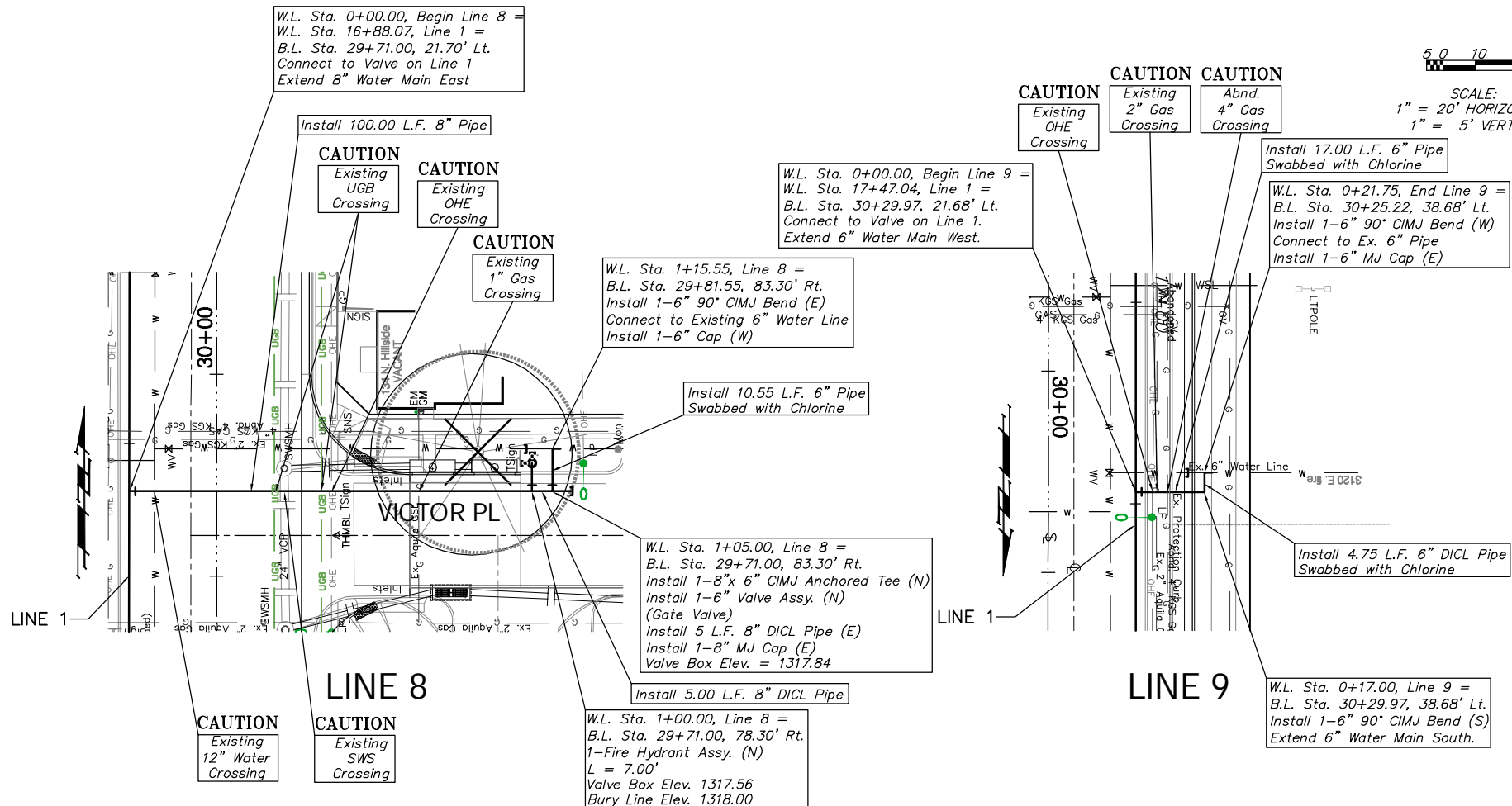


BENCHMARKS:

BM #4 - Top of Curb of SW Parking Lot
 NW Corner of Hillside & Douglas
 Sta. 26+49.73, 29.60 feet Lt.
 Elev. = 1312.17 MSL

BM #5 - Top of Brick NW Corner of Brick Planter
 NW Corner Bldg. #162 SE Corner of Hillside
 & 1st. Sta. 32+43.83, 73.26 feet Rt.
 Elev. = 1320.88 MSL

5 0 10 20
 SCALE:
 1" = 20' HORIZONTAL
 1" = 5' VERTICAL



PROJECT NUMBER 448-89557		SHEET NAME H2010		ENGINEERING DIRECTORY F:\Eng\Hillside\Water	
DESIGN ATD	DRAWN ATD	APPROVED JFB	DATE May 2006	SCALE NOTED	BAUGHMAN NO 01-03-E947

CAPITAL IMPROVEMENT PROJECT

HILLSIDE WATERLINE IMPROVEMENTS

Line 8 & Line 9

HILLSIDE AVENUE - KELLOGG TO 3RD STREET NORTH

BAUGHMAN COMPANY, P.A.

ENGINEERING, SURVEYING, & PLANNING

316-262-7271 • 315 ELLIS • WICHITA, KANSAS 67211

SHEET
56
OF
118