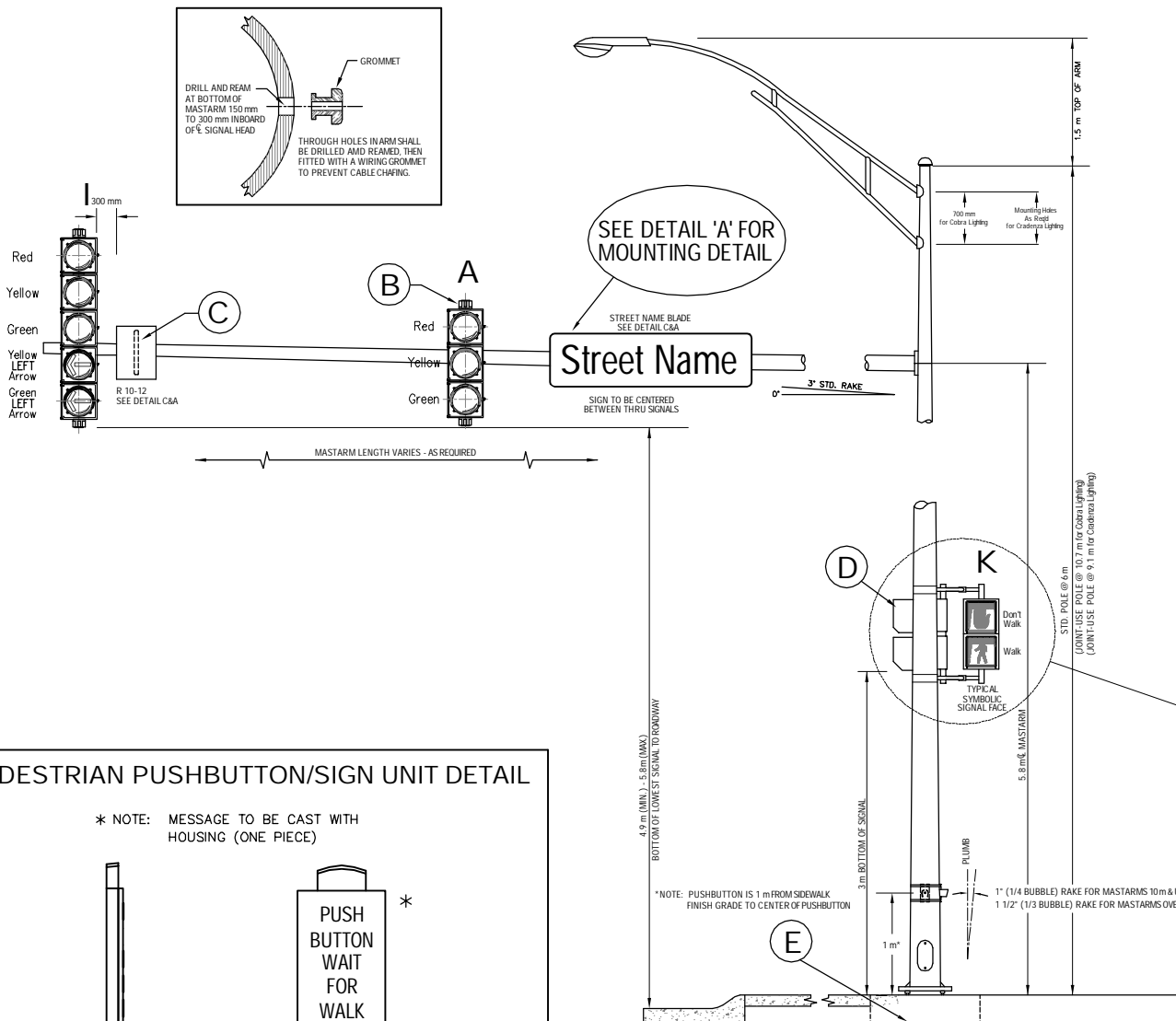
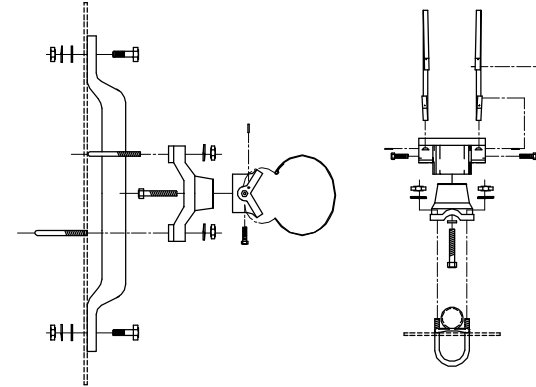


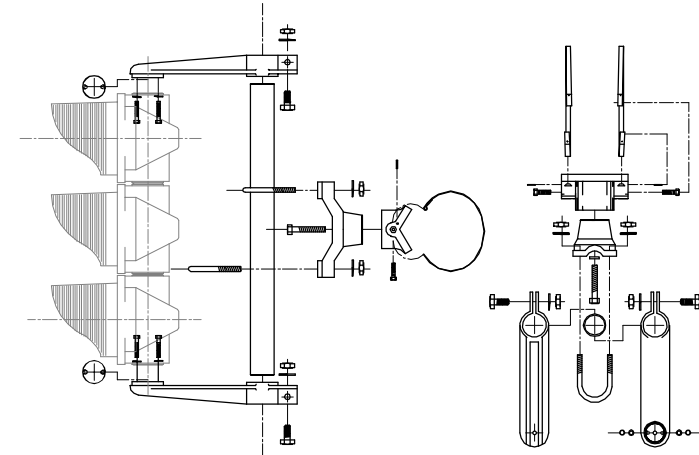
FHWA REGION NO.	STATE	PROJECT NO.	FISCAL YEAR	SHEET NO.	TOTL SHEE
7	KANSAS	87 N-0226-01	2006	66	118



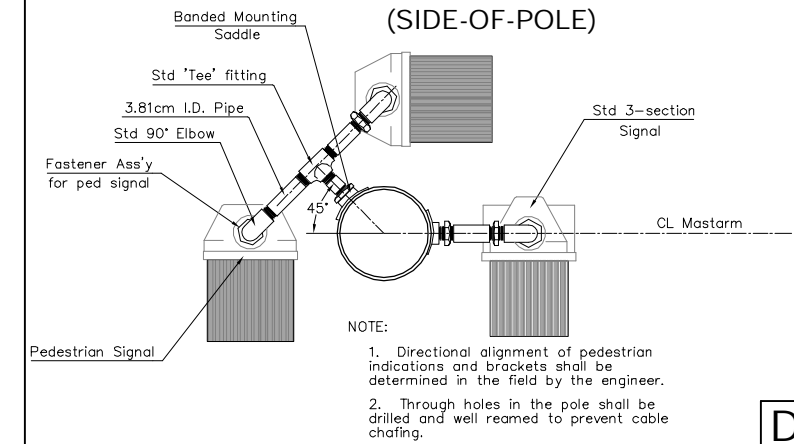
BANDED SIGN MOUNTING BRACKET DETAIL



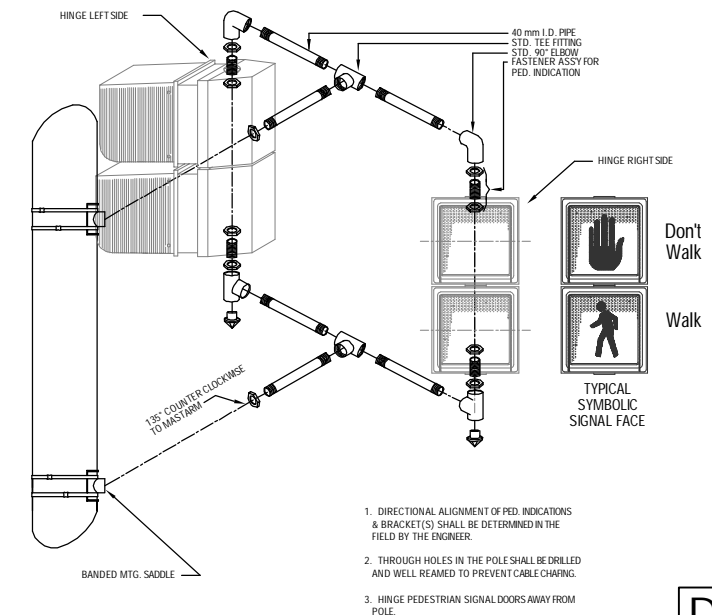
TYPE I SIGNAL MOUNTING BRACKET ASSEMBLY DETAIL



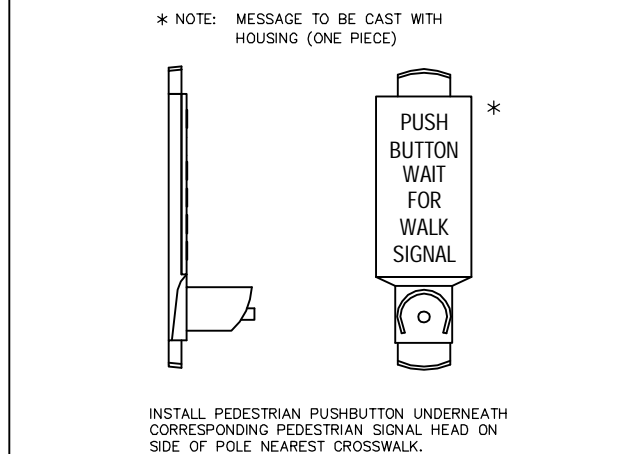
COMBINATION TYPE II & TYPE III SIGNAL MTG BKT ASSY (SIDE-OF-POLE)



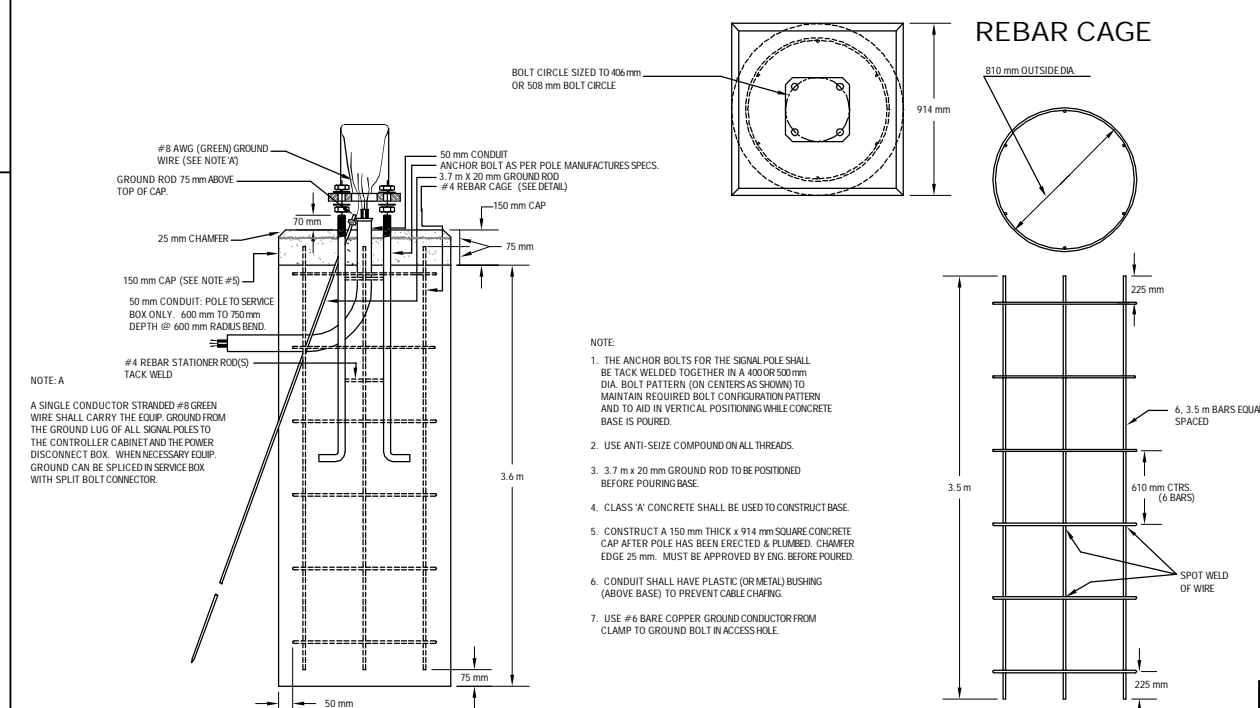
TYPE II SIGNAL MOUNTING BRACKET ASSEMBLY (SIDE-OF-POLE)



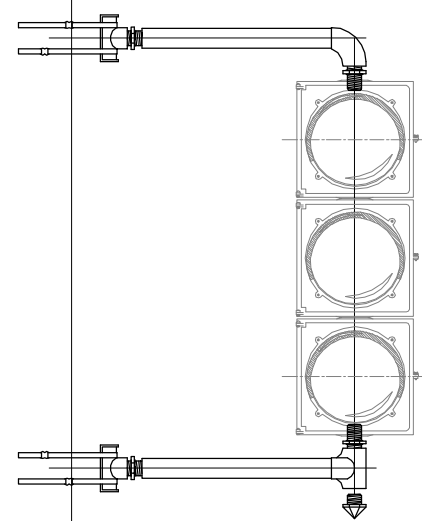
PEDESTRIAN PUSHBUTTON/SIGNAL UNIT DETAIL



REINFORCED CONCRETE POLE BASE



TYPE III SIDE-OF-POLE MOUNTING BRACKET ASSEMBLY



STANDARD SIGNING



PROJECT NUMBER	SHEET NAME	ENGINEERING DIRECTORY			
472-83862	PPSP1-M	F:\HillsideTraffic			
DESIGN STAFF	DRAWN STAFF	APPROVED	DATE	SCALE	BAUGHMAN NO
		JFB	May 2006	None	01-03-E947

CAPITAL IMPROVEMENT PROJECT
SIGNAL POLE DETAILS
HILLSIDE AVENUE - KELLOGG TO 3RD STREET NORTH

BAUGHMAN COMPANY, P.A.
ENGINEERING, SURVEYING, & PLANNING
316-262-7271 • 315 ELLIS • WICHITA, KANSAS 67211