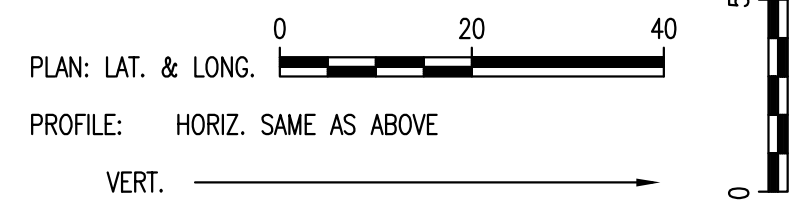
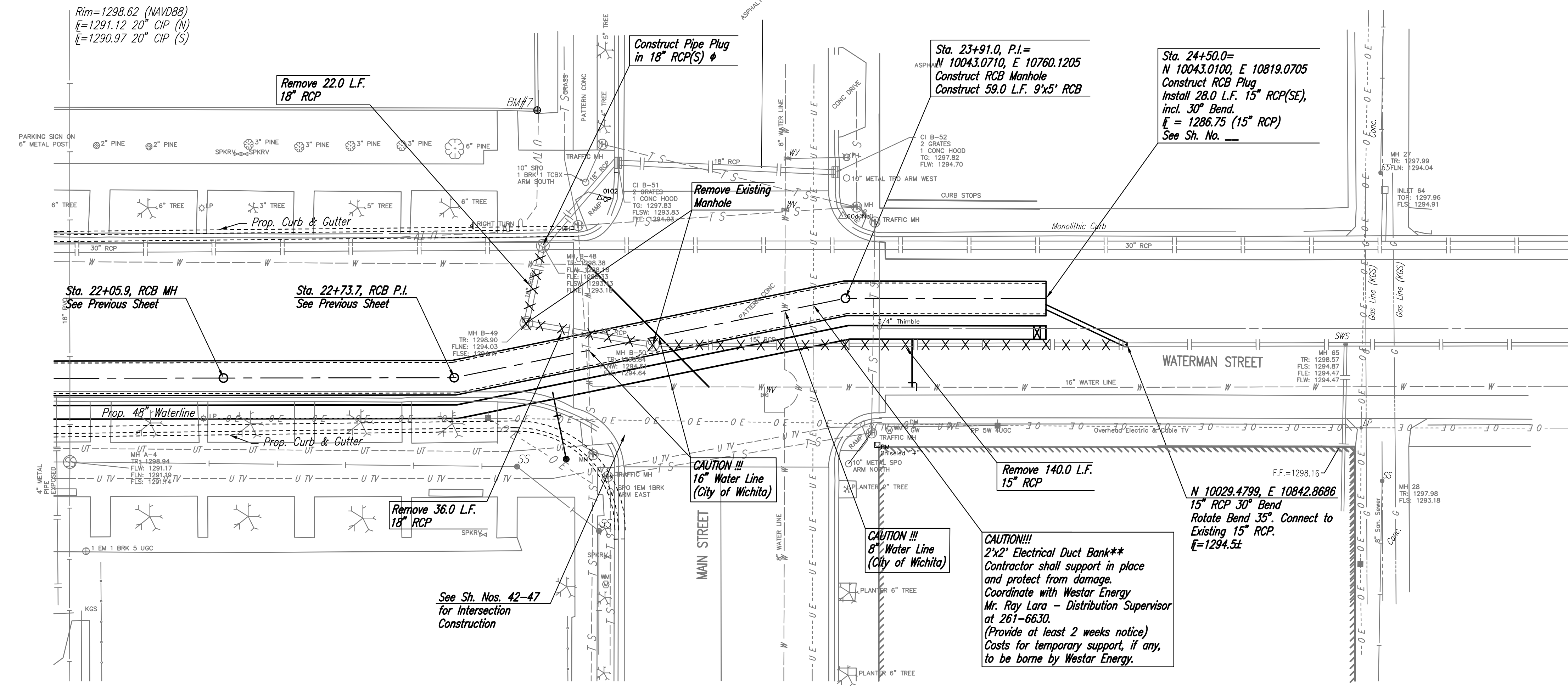


SCALE:



φ - Pipe Plugs shall be Subsidiary to Pipe Removal.



SCALE: 1"=20'

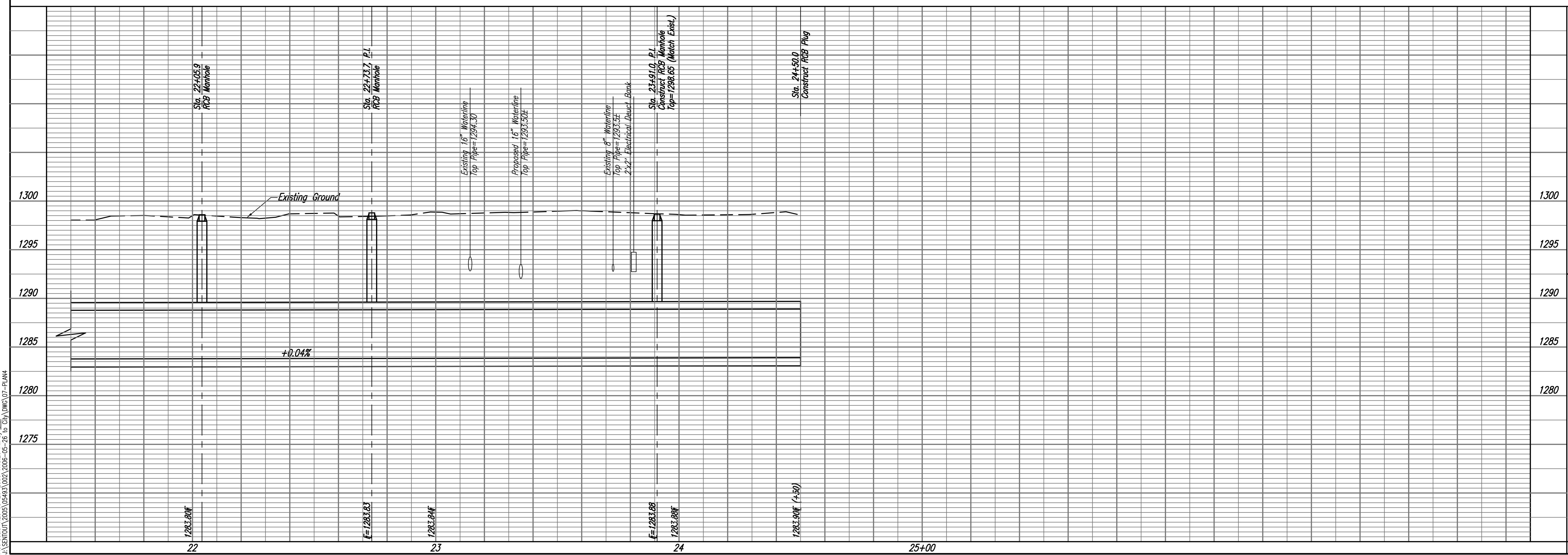
SEE SH. NO. 33 FOR 48" WATERLINE

LEGEND

** PRIOR TO BEGINNING CONSTRUCTION, THE CONTRACTOR SHALL EXCAVATE THE EXISTING ELECTRICAL DUCT BANK TO VERIFY HORIZONTAL AND VERTICAL LOCATION. THE CONTRACTOR SHALL REPORT HIS FINDINGS TO THE ENGINEER SO THAT ANY NECESSARY PLAN MODIFICATIONS MAY BE MADE. ANY ADDITIONAL LABOR OR MATERIALS NECESSARY SHALL BE CONSIDERED SUBSIDIARY TO THE PROJECT.

DATE	
BY	
CHECKED	
CHECKED	
PLAN	

DATE	
BY	
CHECKED	
CHECKED	
PROFILE	



DOWNTOWN AVENUE SWD OUTFALL
PHASE 1 - WATERWALK PORTION
STORM WATER DRAIN

Professional Engineering Consultants, P.A.
303 S. TOPEKA • WICHITA, KANSAS 67202
316-262-2691 • FAX 316-262-3003

Designed By: DRG
Drawn By: DRG
Job No.: 32-05-93-002-024
Date: April, 2006

Saved: 05-26-2006 11:46:06 AM by SWM
Plot Scale: 1"=20'-00" (1:240) 11:26 PM by DRG
C:\SWM\2005\05-26-06\32-05-93-002-024\DWG\07-PLAN.dwg